

Cleanroom KL Recessed Highbay

Wet Location 2x2 High Flux LED Luminaire for Recessed Highbays.

- **Rated IP66**
- **Suitable for ISO 3-9 Cleanspaces**
- **Suitable for 209E class 1-100,000 Cleanspaces**
- **ETL listed for Wet Locations**
- **One Piece Overlapping Doorframe**
- **Robotically seam welded housing**
- **0-10v 5% Dimming Standard.**
- **Up to 40,000 Lm Delivered @ over 130 Lm/W**



DISCLAIMER: Although KURTZON has prepared the information contained in this document with all due care, KURTZON does not warrant or represent that the information is free from errors or omission. Whilst the information is considered to be true and correct at the date of publication, changes in circumstances after the time of publication may impact on the accuracy of the information. The information may change without notice and KURTZON is not in any way liable for the accuracy of any information printed and stored or in any way interpreted or used.

ORDERING GUIDE

Series	Installation Type	Material	Size	Source	CCT	Voltage	Options
KL							
KL	F/G: Flange & Grid	1: White CRS Hsg. & White CRS Door 2: White CRS Hsg. & Polished SS Door 6: White CRS Hsg. & White AL Door	2x2: 2' x 2' Housing	3/LEDB 4/LEDB	70 CRI: 750 = 5000K CCT 80 CRI: 835 = 3500K CCT 840 = 4000K CCT 850 = 5000K CCT 90 CRI: 935 = 3500K CCT 940 = 4000K CCT 950 = 5000K CCT	120V 277V UNV 347V*	FC: Fuse & Holder (One Supplied Per Circuit) EM20: 20W Remote LED EM (Specify Input Voltage) WHT: White Finished Door LEX: .125" Prismatic Polycarbonate A19: .156" Prismatic P19 Pattern Clear Acrylic HIA: .140" High Impact P12 Pattern Clear Acrylic TG: .156" Prismatic Tempered Glass SW: Wet Locatoin Hub Supplied (not installed) PxL: Programmed to User Specified Lumen Value.∞∞ PxW: Programmed to User Specified Wattage Value.∞∞ 10KV: 10KV Parallel Surge Protection (One Supplied Per Circuit) GTD: Generator Transfer Device .125 FROST: 1/8" Frost Acrylic Lens OCCMW: Internal microwave OCC Sensor WHIP: Must Specify Length and Wire Qty

Cleanroom KL Recessed Highbay

Wet Location 2x2 High Flux LED Luminaire for Recessed Highbays.

SPECIFICATIONS

HOUSING: One piece, robotically seam welded, hole free 20-gauge CRS construction.

DOOR FRAME: One piece door frame with welded corners overlaps the fixture allowing the NSF approved microcellular gasket to seal to the mounting surface. Door frame is hinged by aircraft cables and is supplied with captive stainless steel flush head screws to allow easy wiping of the surface. Available in .040" 3003 Powder coated Alum. , 20Ga 304 Polished SS, or 18Ga 1008 Powder coated CRS.

GASKETS: NSF Listed closed cell microcellular extruded KleanLock SealPro gasket with vulcanized corners making a one-piece oil and solvent resistant gasket system.

LENS: Impact resistant .135" thick virgin acrylic with P12 prismatic pattern inverted. See "Options" for other choices.

LEDs: Up to Four (4) Replaceable LED arrays using commercially available COB arrays warranted for 5 years. Available in 4000K and 5000K CCT, with 70 or 80 CRI , highly consistent color maintained to 4 SDMC.

DRIVERS: Standard driver(s): Universal voltage (120-277 volt). LED drivers are commercially available high efficiency, HPF and dimmable with 0-10v control. Standard drivers are programable to match wattage or lumen requirements. Provided with a five (5) year warranty.

REFLECTOR: Die formed metal with high reflectance white polyester powder coat finish. Typical reflectivity 92%.

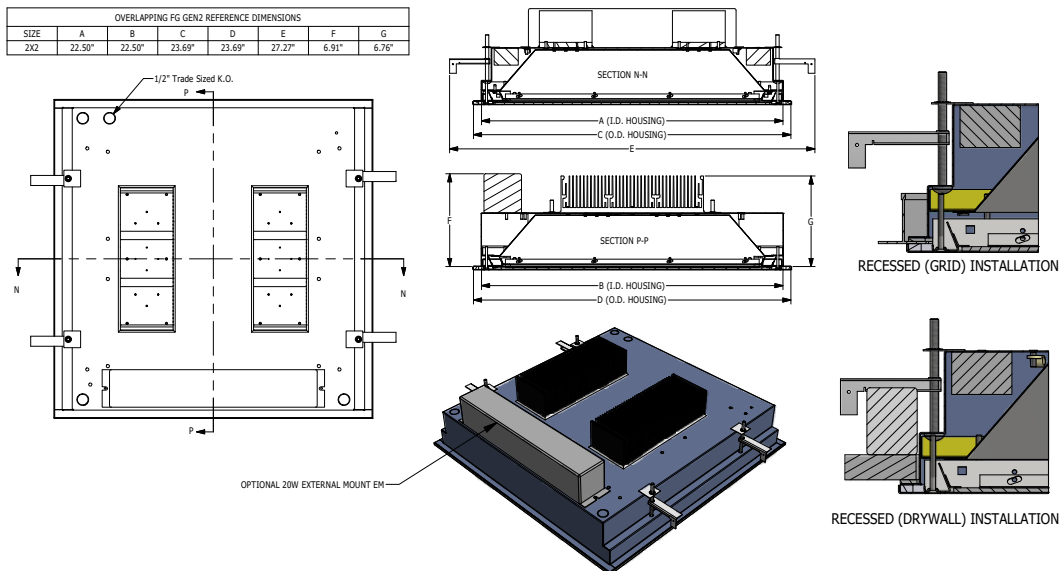
INSTALLATION FLANGE: Adjustable toggle arm mounting standard. Seismic support wire attachment locations. Supply entry via 1/2" trade size flattened knockouts. Suitable for through wiring.

INSTALLATION GRID: Standard luminaires accommodate 1.0" & 1.5" and some 2.0" T-Bar Grid. Four adjustable toggles have holes for cable attachment point for seismic support. Supply entry via 1/2" trade size flattened knockouts. Suitable for through wiring.

FINISH: Gloss white high reflectance 1000 hr. salt spray polyester powder coat finish standard for all housings. Stainless steel doorframes are satin polished unless option WHT is chosen.

LISTINGS: IP66 rated for dust and water ingress. Suitable for 1700 PSI high pressure hosedowns. ETL listed per UL_1598 for wet locations. Chicago Plenum Rated. Certified ISO-14644-1 for class 3 through class 9 cleanspaces. Certified Fed Std 209E for Class 1 through Class 100,000 cleanspaces. NSF2 Listed for Food Zones. Drivers and LEDs are covered by a 5 year warranty, the remaining fixture is covered by a 10 year warranty.

PRODUCT DRAWINGS



09-CB-L-STD FG OVERLAPPING GEN2 DWG DATE: 4/5/2017

Cleanroom KL Recessed Highbay

Wet Location 2x2 High Flux LED Luminaire for Recessed Highbays.

ENERGY DATA

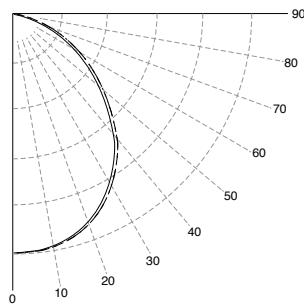
OVERLAP-FG-2X2-3or4LED GEN2													
ENCLOSURE SIZE	LIGHT PACKAGE	DIMMING	70 CRI (5000K)			80 CRI (3000K-5000K)			90 CRI (3500K-5000K)			AMBIENT TEMP RATINGS	
			Lumens ¹	Wattage ²	Efficacy ³	Lumens ¹	Wattage ²	Efficacy ³	Lumens ¹	Wattage ²	Efficacy ³	MINIMUM	MAXIMUM ⁴
2X2	FROST LENS 3LEDB	0-10V 5%	32,600	250	130	29,800	250	119	25,500	250	102	-40°C (-40°F)	50°C (122°F)
2X2	FROST LENS 4LEDB	0-10V 5%	42,000	330	127	38,600	330	117	32,800	330	99	-40°C (-40°F)	50°C (122°F)
2X2	CLEAR LENS 3LEDB	0-10V 5%	34,500	250	138	31,500	250	126	27,000	250	108	-40°C (-40°F)	50°C (122°F)
2X2	CLEAR LENS 4LEDB	0-10V 5%	44,500	330	135	40,900	330	124	34,700	330	105	-40°C (-40°F)	50°C (122°F)
2X2	20W EM ⁵	NA	2540-2760	9	NA	2340-2520	9	NA	1980-2160	9	NA	0°C (32°F)	45°C (113°F)

- ¹ DELIVERED LUMEN DATA IS EXTRAPOLATED FROM MEASURED DATA @25C WITH NO EXTRA OPTIONS. VARIANCES WILL OCCUR WHEN OTHER SELECTIONS ARE MADE
- ² WATTAGE IS MEASURED WITH LED 750 SELECTION @ 120VAC AND Tambient = 25C. WATTAGES WILL VARY AND INCREASE WHEN ALTERNATE OPTIONS ARE SELECTED
- ³ EFFICACY CALCULATED USING LOWEST CCT @ 25C AMBIENT VARIATIONS MAY OCCUR
- ⁴ MAX TEMP RATING IS WITH NO OTHER OPTIONS SELECTED.
- ⁵ INITIAL LUMEN VALUE CALCULATED BY (20W)*(NORMAL LUMENS/NORMAL WATTAGE).

PHOTOMETRICS

KL-F/G-6-2X2-4LEDB840-UNV-.125 FROST

Report No: 20285.0
 Total Lumens: 38,630
 Wattage: 330.370
 Efficacy: 116.9 (Lumens Per Watt)
 Fixture Size: 2' x 2'
 Key:
 - - - - - 0
 45
 _____ 90



KL-F/G-6-2X2-3LEDB840-UNV-.125 FROST

Report No: 20286.0
 Total Lumens: 29,820
 Wattage: 247.410
 Efficacy: 120.5 (Lumens Per Watt)
 Fixture Size: 2' x 2'
 Key:
 - - - - - 0
 45
 _____ 90

