

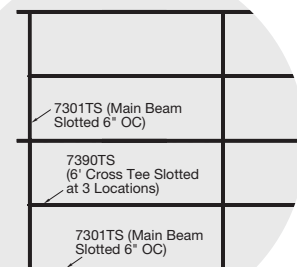
METALWORKS™ Torsion Spring/ Torsion Spring Exterior

smooth texture



MetalWorks™ Torsion Spring panels with custom perforations in Silverlume with Prelude® XL® 15/16" suspension system (Pgs. 391-392)

CAD/Revit® drawings at:
armstrongceilings.com



plus capabilities
to do more



armstrongceilings.com/capabilities
See more photos at:
armstrongceilings.com/photogallery

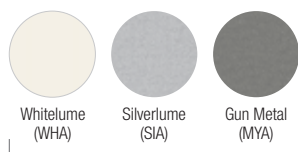
Large-size concealed panels offer a monolithic visual with 100% downward accessibility.

KEY SELECTION ATTRIBUTES

- Now available with PureWood™ real wood veneers in three standard finishes new
- MetalWorks Torsion Spring is part of the Sustain™ portfolio and meets the most stringent sustainability compliance standards today
- Choose from a variety of standard panel sizes that install with pre-slotted standard 15/16" suspension system
- 48" x 48" panels are available as a premium option
- Interior panels feature swing-down accessibility
- For exterior applications, choose from two standard panel sizes that install with 15/16" G90 suspension system
- Reflections™ laminate finishes provide superior wood-look visual with printed vinyl bonded to aluminum; visuals other than the ones shown are also available
- NRC values up to 0.90 with fiberglass infill panels (select perforation patterns)

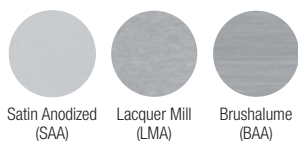
COLOR SELECTION Due to printing limitations, shade may vary from actual product.

MetalWorks™ – Interior and Exterior



Part of the Sustain™ portfolio, meeting sustainability compliance standards

MetalWorks – Interior Only



Custom Colors Available

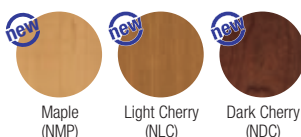
Reflections™ Laminate Finishes – Interior and Exterior



Reflections Laminate Finishes – Interior Only

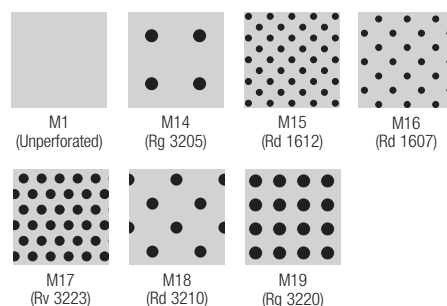


PureWood Veneer Finishes – Interior Only

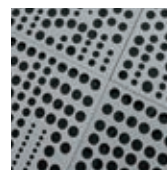
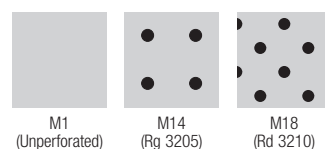


PERFORATION OPTIONS (1/2 scale shown)

Painted and Laminate Perforations



PureWood Perforation Options (1/2 scale shown)



Custom Perforations Available

METALWORKS™ Torsion Spring/ Torsion Spring Exterior

smooth texture


DeclareSM
Living Building
Challenge Compliant

SUSTAIN™
High Performance
Sustainable
Ceiling Systems
Unperforated (M1)



For LEED contribution contact TechLine

VISUAL SELECTION

Edge Profile	Item No. ♦	Dimensions (Inches) W x L x D Custom Sizes Available
METALWORKS™ Torsion Spring Square with Acoustical Fleece		
Torsion Spring Square 15/16"	7209 _____	24 x 24 x 1-1/2"
		
	7210 _____	24 x 48 x 1-1/2"
	7211 _____	24 x 72 x 1-1/2"
	7212 _____	24 x 96 x 1-1/2"
	7213 _____	30 x 30 x 1-1/2"
Exterior Panels		
	7225 _____	24 x 24 x 1-1/2"
	7226 _____	24 x 48 x 1-1/2"

NOTE: 48 x 48" panels are available as a premium option








- ♦ When specifying or ordering, include the appropriate perforation and color suffix with the item number (e.g., 7209 M 1 4 L M A).
- * Light reflectance is for unperforated Whitelume.
- ** Unperforated Whitelume light reflectance
- *** Perforated Whitelume light reflectance

PERFORMANCE

Dots represent high level of performance.

Light Reflect*	Springs per Panel
0.77	4
0.77	4
0.77	6
0.77	6
0.77	4
0.77** 0.61***	4
0.77** 0.61***	4

ACOUSTICAL INFORMATION

Perforation	NRC with acoustical fleece	NRC with 1" fiberglass infill panel††
M1† 	Unperforated	—
M14† 	Rg 3205	0.55 •
M15† 	Rd 1612	0.70 •
M16† 	Rd 1607	0.70 •
M17† 	Rv 3223	0.70 •
M18† 	Rd 3210	0.65 •
M19† 	Rg 3220	0.75 •

† Available for exterior applications

†† Maximum NRC achieved with acoustical infill (item 8200100 or 5823).

For infill panel information, refer to Pg. 156.



PHYSICAL DATA

Material

Aluminum – thickness 0.040"
Aluminum – thickness 0.060" (item 7226 only)

Surface Finish

Reflections™ laminates: Vinyl-faced membrane
Painted finishes: Factory-applied polyester paint
Custom colors and finishes available.

Fire Performance

If a composite test report is needed, Class A test reports are available for aluminum Torsion Spring painted and metal finishes, along with Class B test reports for both PureWood™ veneer and Reflections laminate finishes.

Fire performance for other finishes will vary depending on the required finish.

Code Considerations

The International Mechanical Code requires that materials used in or forming part of an air plenum, have a flame spread index of 25 or less and a Smoke Developed Index of 50 or less on all surfaces of the material including those surfaces that may be exposed by cutting the material. Exception: The IBC states, "Materials having a thickness less than 0.036 inches (0.9mm) applied directly to the surface of walls or ceilings shall not be required to be tested."

Panels finished with PureWood veneers, Reflections laminates, and paint finishes typically have a thickness less than 0.036 inches (0.9mm). These finishes are applied directly to the Class A aluminum substrate.

Acoustical Options

Perforated panels are supplied with a black fiberglass fleece to absorb sound.

Recycled Content

Minimum 25%. Up to 80% recycled content available.

Design Considerations

Anodized and Lacquer Mill finishes may vary in shade between production runs as well as over time. Sizes can be mixed and matched on non-perforated panels only.

30" x 30" panels have a directional finish that is perpendicular to the main beams; all other panel sizes have a directional finish that is parallel to the main beams.

MetalWorks™ steel and aluminum panels are made at different manufacturing facilities that use different paint systems. Because of this, similar colors, i.e., White and Whitelume, are not exact color matches. Please consider this when designing adjacent spaces with multiple MetalWorks products.

For PureWood finishes, variation among panels may occur due to the natural characteristics of the wood and grain.

Wind Uplift Performance

24" x 24" and 24" x 48" panels noted for exterior flat application tested for wind uplift Classes 30, 60, and 90. Specific installation instructions to meet these classes are available. For more information, visit armstrongceilings.com or contact TechLine customer support at 1 877 276-7876.

Design Support

Project management assistance is available by calling TechLine customer support at 1 877 276-7876.

Seismic Restraint

MetalWorks Torsion Spring panels have been engineered, tested, and approved for application in all seismic areas when installed per Armstrong Ceilings installation instructions.

Warranty

One (1) year limited warranty.
Details at armstrongceilings.com

Weight

0.69 lbs/SF
0.86 lbs/SF (item 7226)

TechLine 877 276-7876

armstrongceilings.com/metalworks

Armstrong®
CEILING & WALL SOLUTIONS

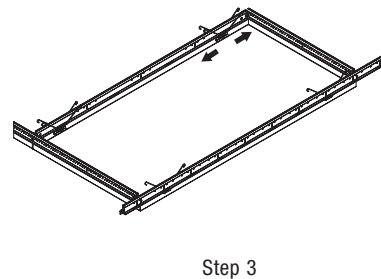
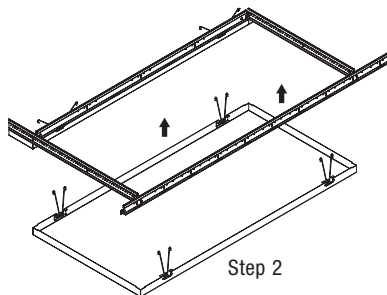
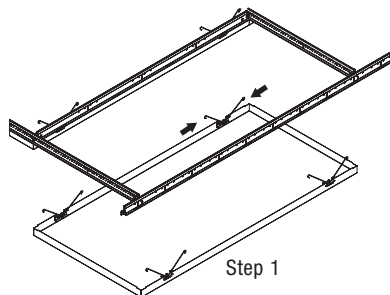
152

METALWORKS™

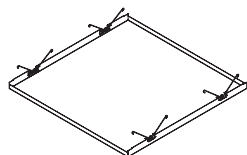
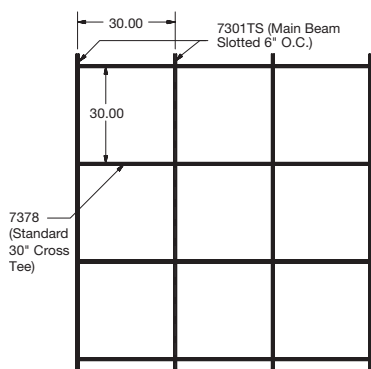
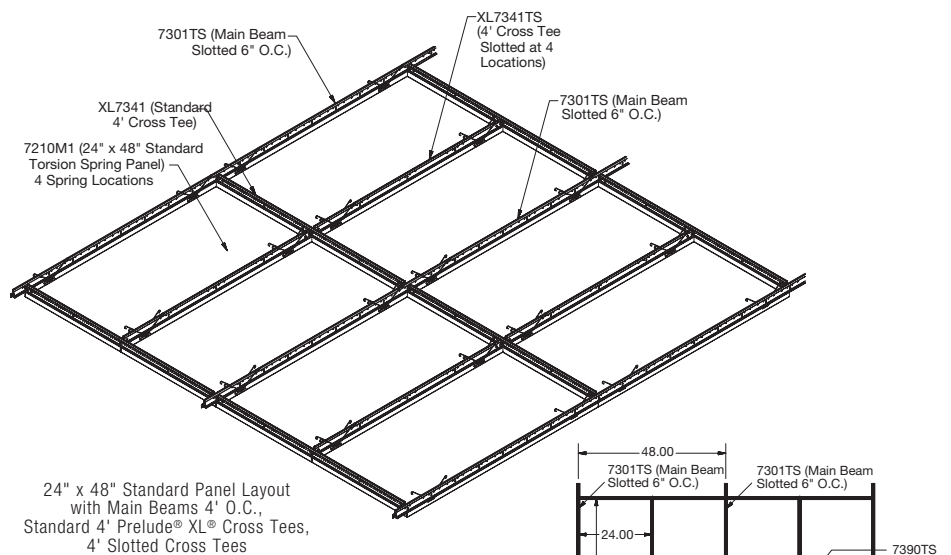
METALWORKS™ Torsion Spring/ Torsion Spring Exterior

Installation Details

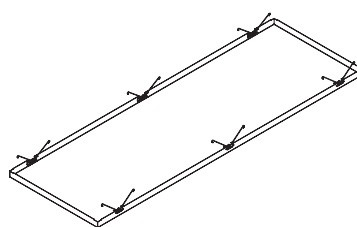
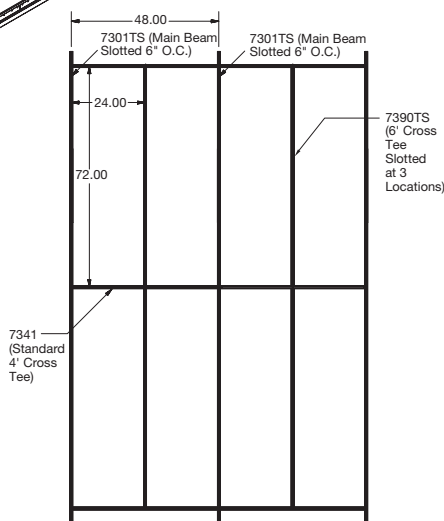
HOW TO INSTALL PANELS



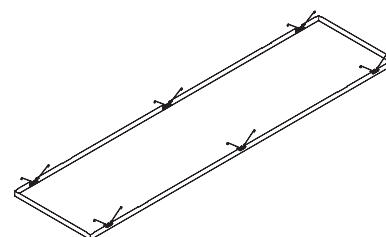
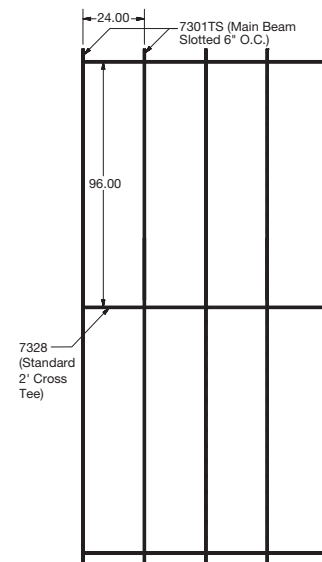
INTERIOR INSTALLATION DETAILS



Suspension System Layout
for 30" x 30" Panels



Suspension System Layout
for 24" x 72" Panels



Suspension System Layout
for 24" x 96" Panels

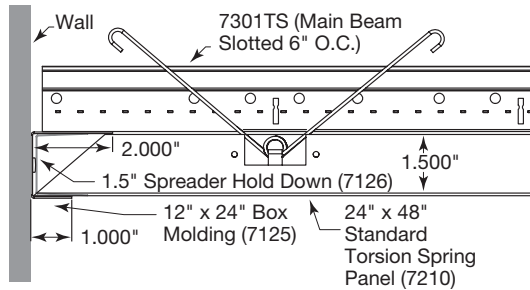
2x8 Grid Layout (Scale - 1:25)

METALWORKS™ Torsion Spring/ Torsion Spring Exterior

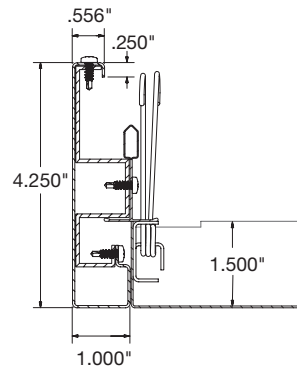
Perimeter Details

INTERIOR WALL PERIMETER DETAILS – For exterior details, consult the MetalWorks Exterior Torsion Spring installation instructions, BPLA-297922, on our web site.

Installation Detail – Wall Perimeter

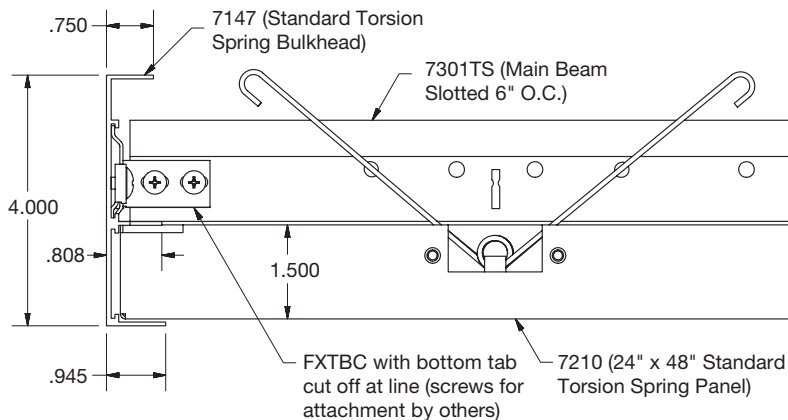


**Installation Detail – Perimeter Trim
(Formed Trim #7131)**

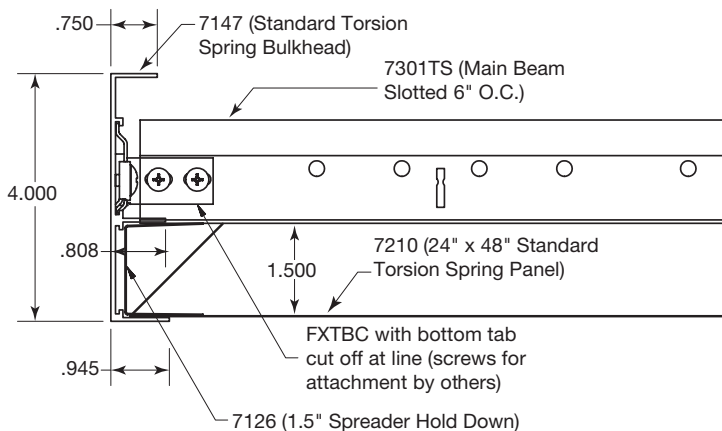


**Installation Detail – Perimeter Trim
(Extruded Trim #7147)**

Full Panels



Cut Panels



METALWORKS™ Torsion Spring/ Torsion Spring Exterior

Accessories & Suspension Systems

ACCESSORIES

Item No. ♦	Description	Dimensions (Inches) Nominal W x L x H	Color	Pieces/ Carton
7125 _ _ _	Box Molding (for Laminates and PureWood™, Black is recommended)	2 x 96 x 1.5"	WHA, SIA, MYA, SAA, LMA, BAA, BL	10
7147 _ _	Torsion Spring Perimeter Trim (Extruded) (for Laminates and PureWood, Black is recommended)	1 x 120 x 4"	WH, SG, MY, BL*	6
7131 _ _ _	Torsion Spring Perimeter Trim (Formed)	1 x 96 x 4.25"	LMA, BAA, SAA	6
7126	Spreader Hold Down	1 x 10-5/8 x 1-1/2"	N/A	10
5823	BioAcoustic™ Infill Panel	24 x 24 x 5/8"	Black	12
8200100	1" Fiberglass Infill Bag	24 x 24 x 1"	Black (Gloss)	12
7129	Torsion Spring Hook Access Tool	N/A	N/A	1
7130	Torsion Spring Suction Access Tool	N/A	N/A	1

♦ When specifying or ordering, include the appropriate color code with the item number (e.g. 7131 K M A)
* Coordinates with WHA, SIA, MYA Torsion Spring Panel finish

SUSPENSION SYSTEMS

Item No.	Description	Dimensions (Inches)
15/16" Prelude® XL® Suspension System – Some items slotted for Torsion Spring. See below.		
7301TS	Prelude XL 12' HD Main Beam – slotted for Torsion Spring	144 x 15/16 x 1-11/16"
XL7341TS	Prelude XL 4' Cross Tee – slotted for Torsion Spring	48 x 15/16 x 1-11/16"
XL7390TS	Prelude XL 6' Cross Tee – slotted for Torsion Spring	72 x 15/16 x 1-11/16"
XL7378	Prelude XL 30" Cross Tee	30 x 15/16 x 1-11/16"
XL8320	Prelude XL 2' Cross Tee	24 x 15/16 x 1-11/16"
XL7341	Prelude XL 4' Cross Tee	48 x 15/16 x 1-11/16"

Exterior Suspension System

15/16" Prelude XL – Some items slotted for Torsion Spring. See below.		
7301G90ATS	Prelude XL 12' HD Exterior Main Beam – slotted for Torsion Spring	144 x 15/16 x 1-11/16"
XL7341G90ATS	Prelude XL 4' Exterior Cross Tee – slotted for Torsion Spring	48 x 15/16 x 1-11/16"
XL7321G90A	Prelude XL 2' Exterior Cross Tee	24 x 15/16 x 1-11/16"

