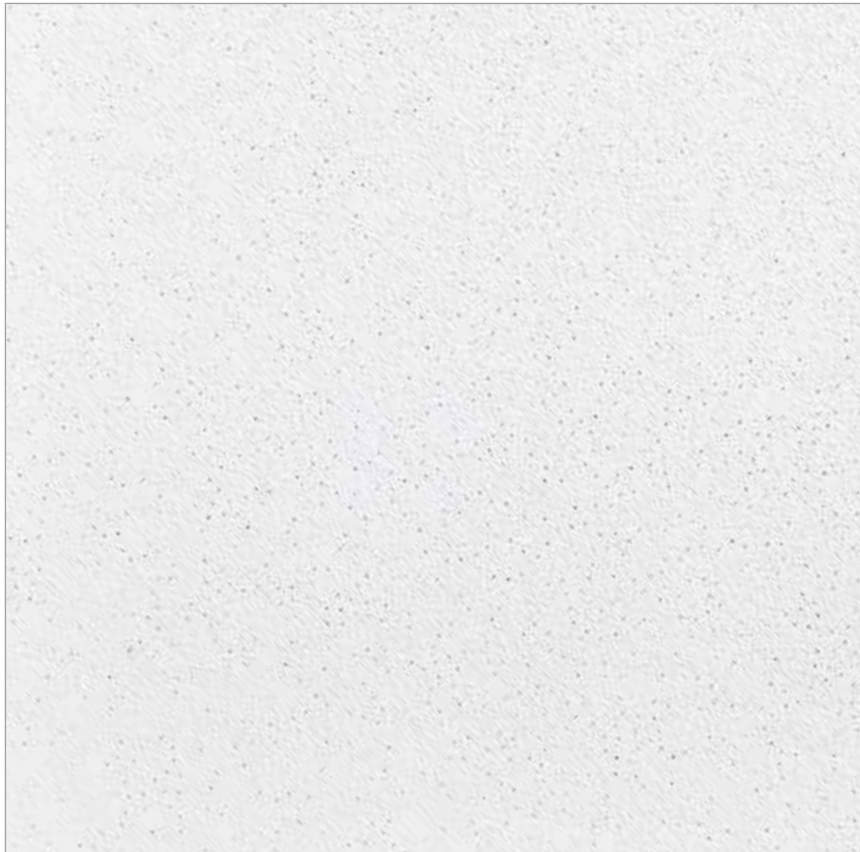


# PERFORMA®

Sand Micro™  
 VOC Compliant



LOW  
VOC

\$\$\$



**LEED® v4**

- MR: Environmental Product Declarations (EPDs)
- MR: Sourcing Raw Materials
- MR: Material Ingredients (HPDs)
- IEQ: Daylight
- IEQ: Low-Emitting Materials
- IEQ: Prereq. Min. Acoustic Performance (Schools)
- IEQ: Acoustic Performance
- MR: PBT Source Reduction (Healthcare)
- IEQ: Interior Lighting
- EA: Prereq. Min. Energy Performance
- EA: Optimize Energy Performance
- Recycled Content  
 Pre: **33%** | Post: **0%**

**TOOLS**

Visit [CertainTeed.com/Ceilings](http://CertainTeed.com/Ceilings)  
 Download HPDs and EPDs  
 LEED® Information / BIM Objects  
 3-Part Specs / Data Pages



Carbon Footprint Reduction  
 Rapidly Renewable Resource Content  
 Recycled Content



EPD Available



HPD Available

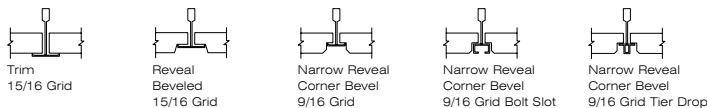
**FEATURES & BENEFITS**

- Non-directional visual
- High humidity and sag resistant
- Third-party verified Environmental Product Declaration (EPD) available for this product
- Lightly textured surface provides attractive finish with excellent light reflectance and enhanced durability
- Health Product Declaration (HPD) available for this product

**APPLICATIONS**

- Schools
- Retail / Department Stores
- Corridors
- Hospitality Spaces
- Other Commercial Buildings / Space Applications

**AVAILABLE EDGE DETAILS**





Sand Micro™ Reveal (SHM-154)

## ATTRIBUTES

	DIMENSIONS (INCHES)	EDGE DETAIL	UL CLASSIFIED NRC	CAC	EPD AVAILABLE	HPD AVAILABLE	SAG RESISTANT	MOLD RESISTANT	LR	WASHABLE	FIRE CLASS (ASTM E1264)	EMISSION COMPLIANT	RECYCLED CONTENT
<b>SAND MICRO™</b>													
<b>SHM-157</b>	24 x 24 x 5/8	Trim	0.50	33	Yes	Yes	Yes	BioShield	0.88	—	Class A	Certified	33%
<b>SHM-154</b>	24 x 24 x 5/8	Reveal	0.50	33	Yes	Yes	Yes	BioShield	0.88	—	Class A	Certified	33%
<b>SHM-150</b>	24 x 24 x 5/8	Narrow Reveal	0.50	33	Yes	Yes	Yes	BioShield	0.88	—	Class A	Certified	33%
<b>SHM-197</b>	24 x 48 x 5/8	Trim	0.50	35	Yes	Yes	Yes	BioShield	0.88	—	Class A	Certified	33%
<b>SHM-194</b>	24 x 48 x 5/8	Reveal	0.50	35	Yes	Yes	Yes	BioShield	0.88	—	Class A	Certified	33%
<b>SHM-190</b>	24 x 48 x 5/8	Narrow Reveal	0.50	35	Yes	Yes	Yes	BioShield	0.88	—	Class A	Certified	33%

**CAN'T FIND A SIZE?** Contact your local Sales Representative or call 800-233-8990

## PHYSICAL DATA

### MATERIAL

Mineral Fiber

### ASTM E1264 CLASSIFICATION

Type III, Form 2, Pattern C E

### FIRE CLASS (ASTM E1264)

Tested according to ASTM E84 & CAN S102

Flame Spread: 25 or less

Smoke Developed: 50 or less

### VOC EMISSIONS

Independently certified compliant with California Department of Public Health CDPH/EHLB/Standard Method Version 1.1, 2010.

### MOLD/MILDEW RESISTANCE

BioShield® treatment included for added mold and mildew resistance.

### MAINTENANCE

Wipe with a soft cloth or vacuum with brush attachment.

### WARRANTY

10-year 104/90 Limited Warranty

Technical Support | [certaineed.com/ceilings](http://certaineed.com/ceilings) 800-233-8990

© 09/17 CertainTeed Corporation

**CertainTeed**  
SAINT-GOBAIN  
Ceilings