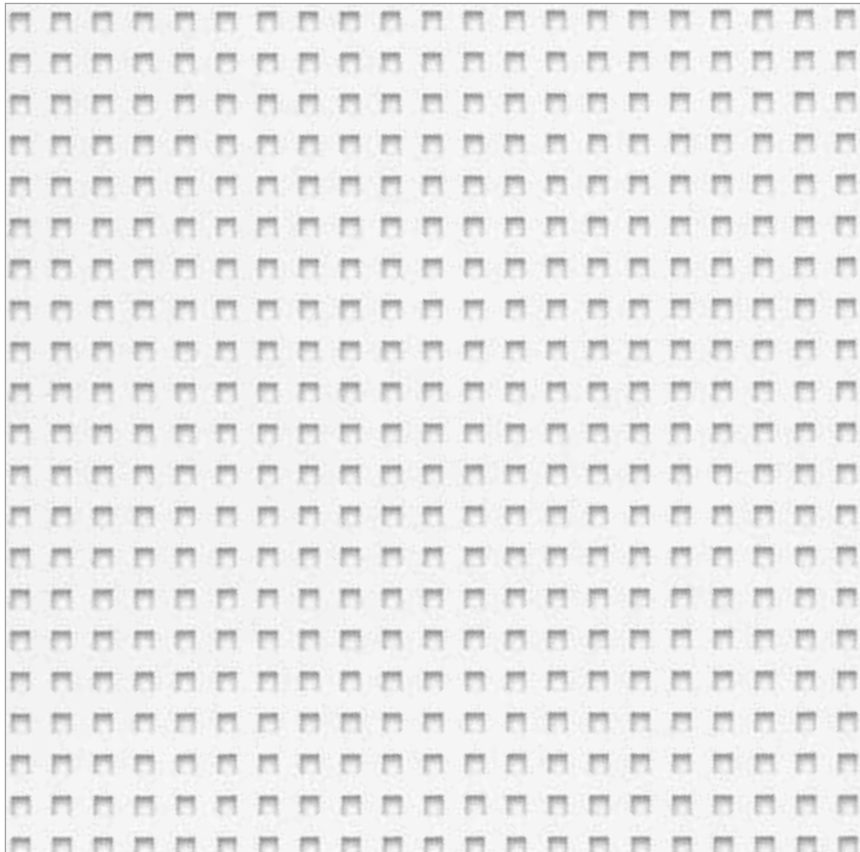


Gyptone®

QUATTRO 20™
 VOC Compliant



LOW
VOC

\$\$\$



LEED® v4

● MR: Environmental Product Declarations (EPDs)

● MR: Sourcing Raw Materials

● MR: Material Ingredients (HPDs)

● IEQ: Daylight

● IEQ: Low-Emitting Materials

● IEQ: Prereq. Min. Acoustic Performance (Schools)

● IEQ: Acoustic Performance

● MR: PBT Source Reduction (Healthcare)

● IEQ: Interior Lighting

● EA: Prereq. Min. Energy Performance

● EA: Optimize Energy Performance

● Recycled Content
 Pre: **80%** | Post: **5%**

TOOLS

Visit CertainTeed.com/Ceilings
 Download HPDs and EPDs
 LEED® Information / BIM Objects
 3-Part Specs / Data Pages



HPD Available

EPD®

FEATURES & BENEFITS

- Perforated gypsum panel
- Sound absorbent
- Unique aesthetic appeal
- Smooth, paintable surface simplifies installation and maintenance, ensuring long, sustainable life
- Durable
- Easy plenum access
- Health Product Declaration (HPD) available
- Proprietary Saint-Gobain formaldehyde/VOC scavenging performance (inherent to all Gyptone products)
- Environmental Product Declaration (EPD) available

APPLICATIONS

- Stores
- Corridors
- Airports
- Schools
- Offices
- Atriums
- Other Commercial Buildings / Space Applications

AVAILABLE EDGE DETAILS



Trim
15/16 Grid



Narrow Reveal
(Corner Bevel)
9/16 Grid



QUATTRO 20™ Narrow Reveal

ATTRIBUTES

	DIMENSIONS (INCHES)	EDGE DETAIL	NRC*	CAC*	HPD AVAILABLE	EPD AVAILABLE	LR	HOLE SIZE (MM)	PERFORATED AREA	FIRE CLASS (ASTM E1264)	EMISSION COMPLIANT	RECYCLED CONTENT
QUATTRO 20™												
5200410417	24 x 24 x 1/2	Trim	0.75	35	Yes	Yes	0.71	9	18%	Class A	Certified	85%
5200410422	24 x 24 x 1/2	Narrow Reveal	0.75	35	Yes	Yes	0.71	9	18%	Class A	Certified	85%

*NRC and CAC values for ceiling and wall applications when used with CertainTeed Sustainable™ Insulation in unfaced 2-1/2" (R-8) as an overlay above the installed panel (Without insulation overlay: NRC=0.65, CAC=17)

CAN'T FIND A SIZE? Contact your local Sales Representative or call 800-233-8990

PHYSICAL DATA

MATERIAL

Gypsum

ASTM E1264 CLASSIFICATION

Type XX, Pattern A G

FIRE CLASS (ASTM E1264)

Tested according to ASTM E84 & CAN S102

Flame Spread: 25 or less

Smoke Developed: 50 or less

VOC EMISSIONS

Independently certified compliant with California Department of Public Health CDPH/EHLB/Standard Method Version 1.1, 2010.

MAINTENANCE

Wipe with a soft cloth or vacuum with brush attachment. Painted surfaces can be cleaned with a damp cloth and mild detergent.

Technical Support | certainteed.com/ceilings 800-233-8990

© 01/17 CertainTeed Corporation

CertainTeed
SAINT-GOBAIN
Ceilings