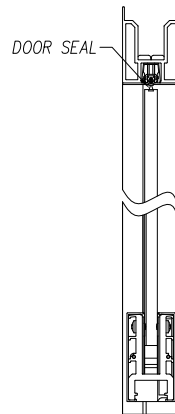
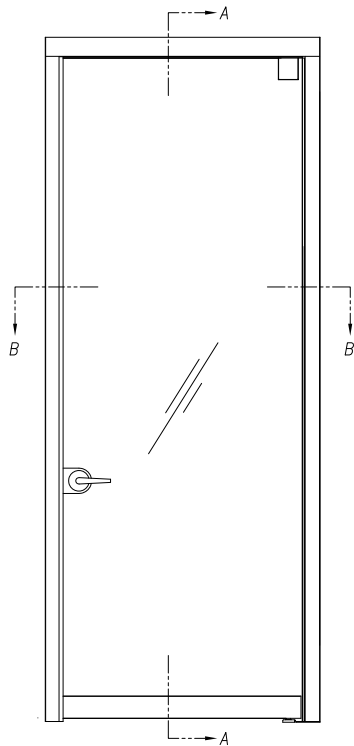


# STANDARD DOOR SEALS

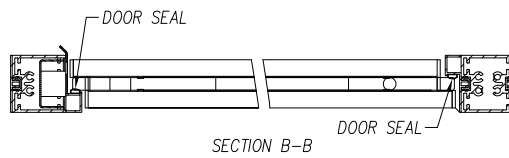
KI Architectural Walls

June 2014

## *Lightline Pivot Door*

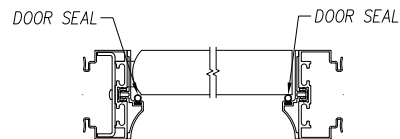
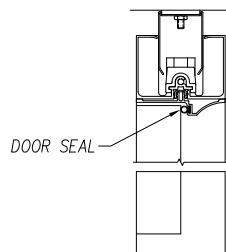
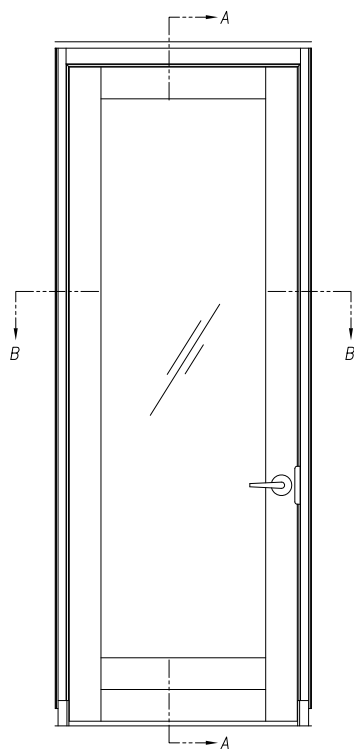


SECTION A-A



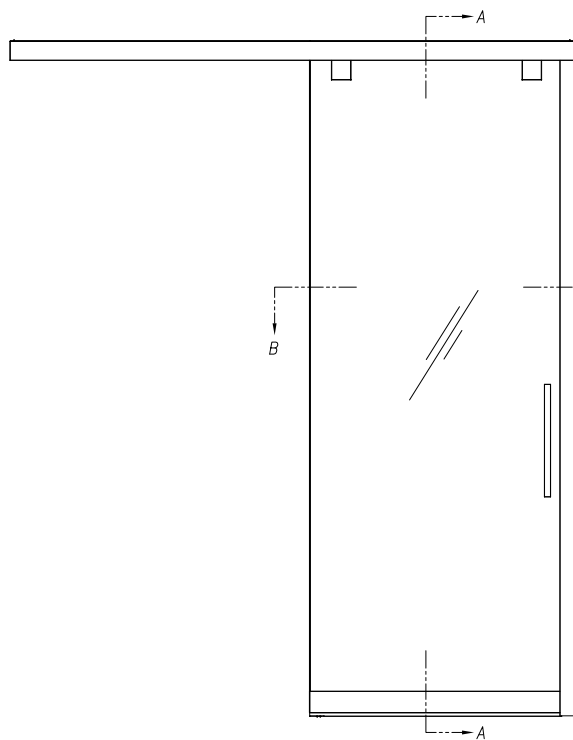
SECTION B-B

## *Genius Pivot Door*

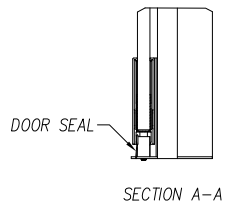


SECTION B-B

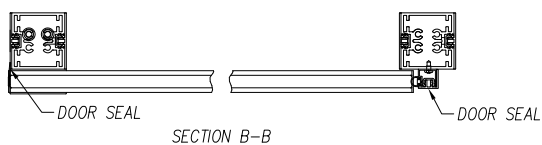
**Note: Full strike solution shown is a standard up-charge**



*Lightline Sliding Door*

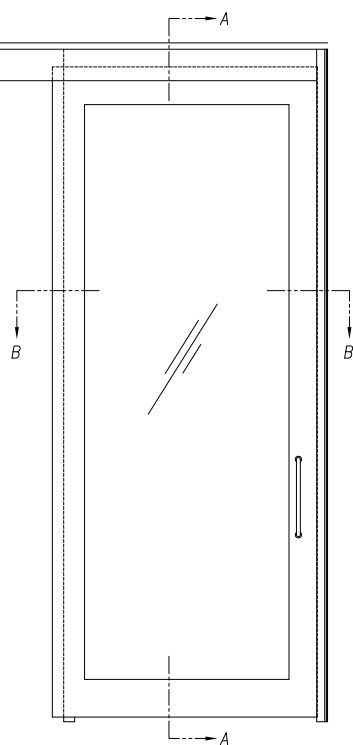


SECTION A-A

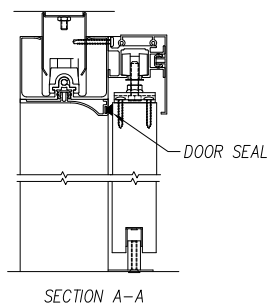


SECTION B-B

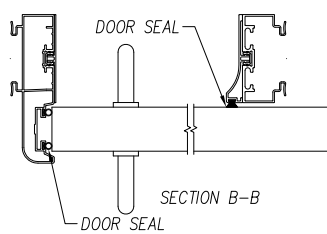
Note 1: Lightline door seal solution shown is a standard upcharge  
 Note 2: Page 4 shows a close up of the door seal



*Genius Sliding Door*

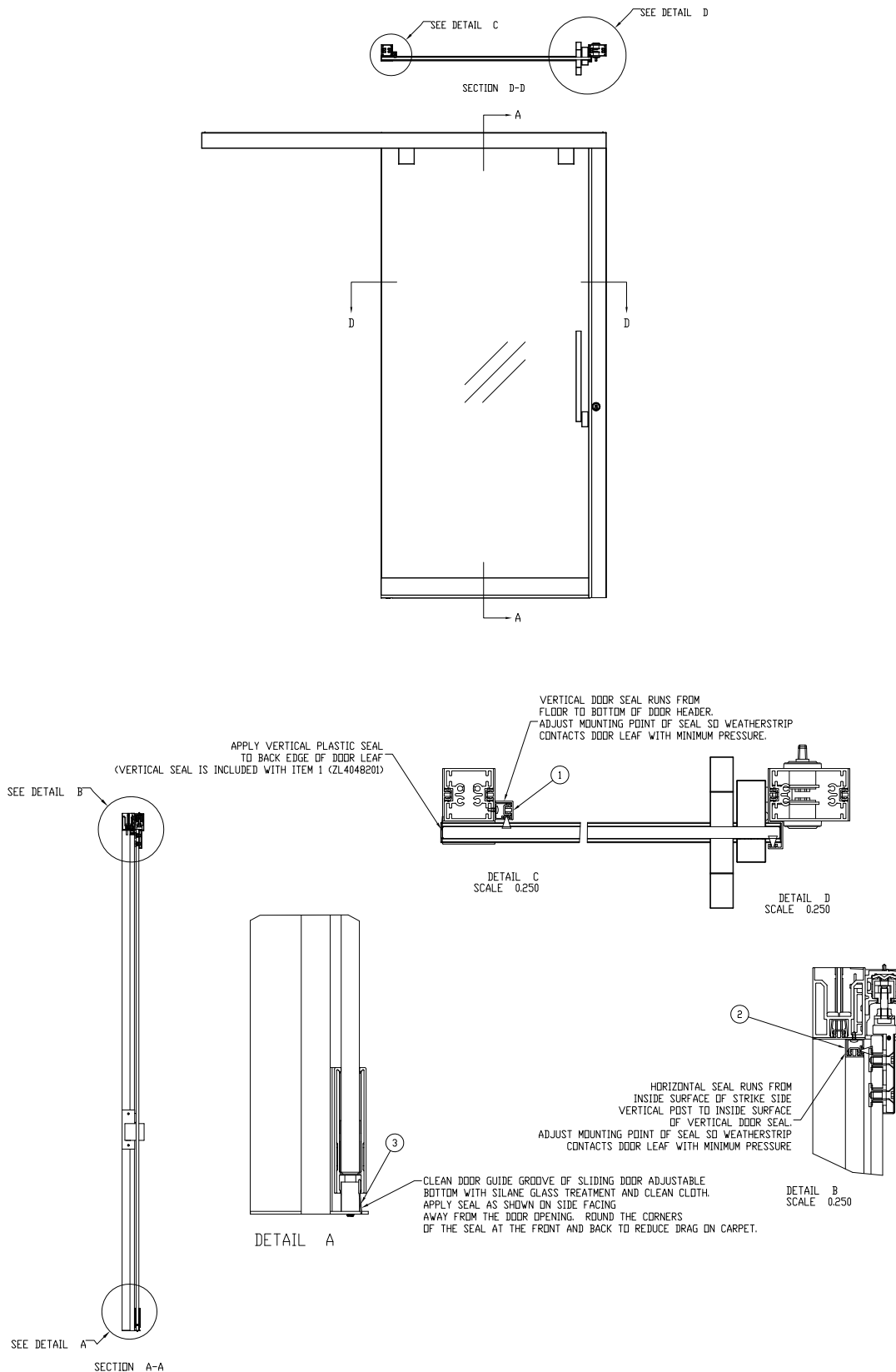


SECTION A-A

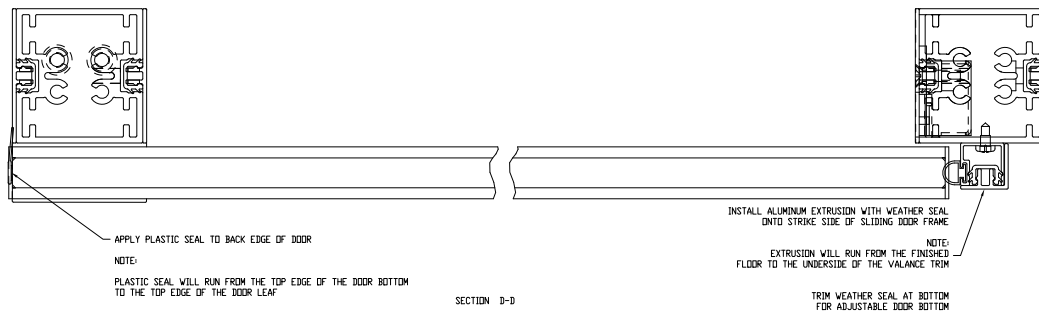


SECTION B-B

## Lightline custom option door seal



### Lightline standard door seal detail is a standard up-charge



### What is the STC rating for your door solutions?

Like our competitors, KI does not test door solutions for STC due to the inherent undercut of door leaves to accommodate floor variations.

As an option, KI can provide acoustical improvements to reduce the impact of the undercut, such as door seals/brushes or drop seals to hinged doors.

As detailed above and to minimize noise, KI does provide light and sound seals vertically and at the top horizontally.

To support the overall acoustic protection concerns of our customers, KI has engineered its Lightline panel solutions to utilize 1/2" thick glass, which is very important to increase STC values. Additionally, KI's Genius wall panel solutions are constructed of steel, which provides superior sound blocking because of its inherent density and weight.