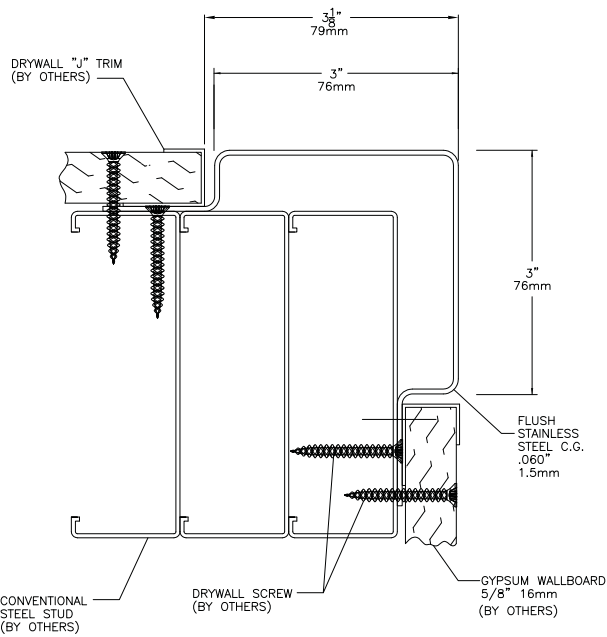


Stainless Steel Flush Mount

Corner Guards



3" WINGS SHOWN, CUSTOM SIZE AVAILABLE

- Offer minimum design interruption by creating a smooth transition from wall to corner
- Specify the size you need! Typical wing sizes are 2" or 3". Available in floor to ceiling heights
- Available in No. 4 Satin Finish
- Screw-on installation only

IPC.433/REV.5

Stainless Steel Flush Mount Corner Guard

Suggested Specifications

PART 1 - GENERAL

1.01 SUMMARY

A. Flush mount corner guard system for wall protection

1.02 SECTION INCLUDES

A. Flush Mount Stainless Steel Corner Guard Systems

1.03 SUBMITTALS

A. Product data for each type of corner guard specified.

B. Detail drawings indicating mounting details with the appropriate fasteners for specific project substrates.

C. Samples for verification purposes of stainless steel, of each type indicated.

D. Cleaning and maintenance instructions for door and wall protection systems.

1.04 DELIVERY, STORAGE AND HANDLING

A. Deliver materials in unopened factory packaging to the jobsite and store in original packaging in a climate controlled location away from direct sunlight.

1.05 PROJECT CONDITIONS

A. Products must be installed in an interior climate controlled environment.

1.06 WARRANTY

A. Standard IPC Limited Lifetime Warranty against material and manufacturing defects.

PART 2 - PRODUCTS

2.01 MANUFACTURER

A. Acceptable Manufacturer: IPC Door and Wall Protection Systems, InPro Corporation, PO Box 406 Muskego, WI 53150 USA; Telephone: 800.222.5556, Fax: 888.715.8407, www.inprocorp.com

B. Substitutions: Not permitted

C. Provide all stainless steel corner guard and wall protection from a single source.

2.02 MANUFACTURED UNITS

A. Flush Mount Corner Guard

1. Flush Mount Stainless Steel Corner Guard Model, Size

SSEW-FM, Custom – specify return length, stud width, drywall thickness.

Corner radius – 1/8"

Height – Full wall height up to 10' (3.05m)

2.03 MATERIALS

A. Stainless Steel: Corner guard shall be manufactured from Type 430, 16 gauge Stainless Steel, options: Type 304 (meets NSF Standard 51), 16 gauge.

2.04 COMPONENTS

A. Attachment

1. Fasteners: Pre-drilled beveled holes and phillips head screws.

2.05 FINISHES

A. Stainless steel: No. 4 satin finish.

PART 3 - EXECUTION

3.01 EXAMINATION

A. Examine areas and conditions in which the corner guard systems will be installed.

1. Complete all finishing operations, including painting, before beginning installation of corner guards.

B. Wall surface shall be dry and free from dirt, grease and loose paint.

3.02 PREPARATION

A. General: Prior to installation, clean substrate to remove dust, debris and loose particles.

3.03 INSTALLATION

A. General: Locate the corner guard as indicated on the approved detail drawing for the appropriate substrate and in compliance with the IPC installation instructions. Install corner guard level and plumb at the height indicated on the drawings.

B. Installation of Stainless Steel Corner Guard:

1. Surface must be dry, clean and properly sealed.

2. Screw on: Position the corner guard on the wall and attach it using the supplied screws.

4. Remove the protective plastic covering from the exposed surface of the corner guard.

3.04 CLEANING

A. At completion of the installation, clean surfaces in accordance with the IPC clean up and maintenance instructions.