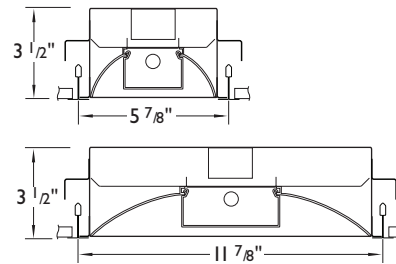


● PART LIST

- | | |
|----------------------------|------------------------|
| A Lens | H BX cable connector |
| B Lamps (by others) | I BX cable (by others) |
| C Fixture 1 | J Knockout plate |
| D Ceiling tile (by others) | K Ballast wires |
| E Safety brackets | L Wire nuts |
| F T-bar runner (by others) | M Fixture 2 |
| G Support wire (by others) | |

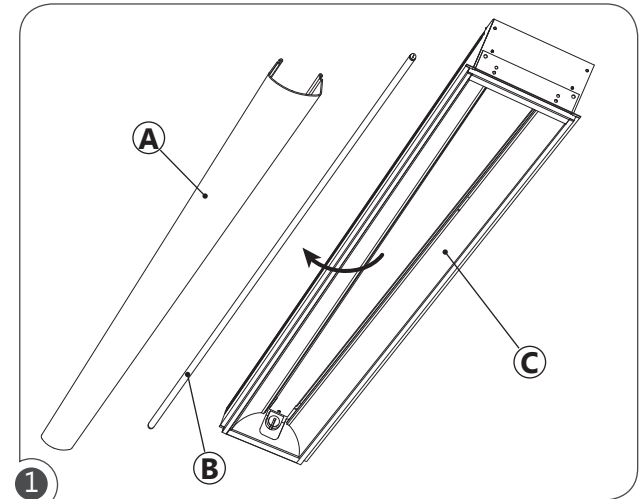
● SECTION VIEW



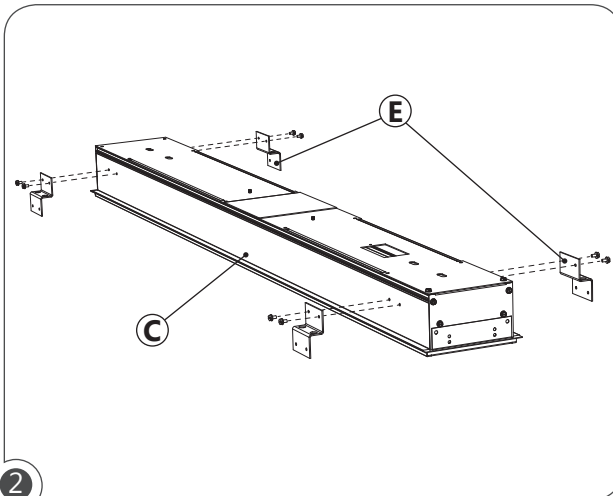
● T-BAR MOUNTING DIMENSIONS

PRODUCT	TB9 9/16"	TB15 15/16"	TG9 9/16"	TG15 15/16"	SCREW SLOT T-BARS
TEK 6	6"	6"	6"	6"	6"
TEK 12	12"	12"	12"	12"	12"

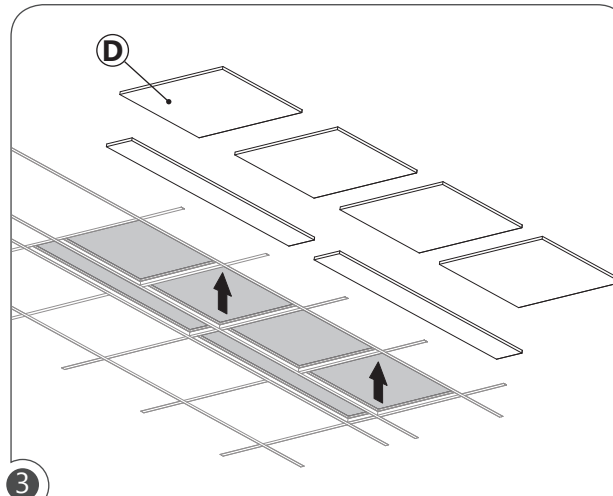
* These numbers are not final please consult factory



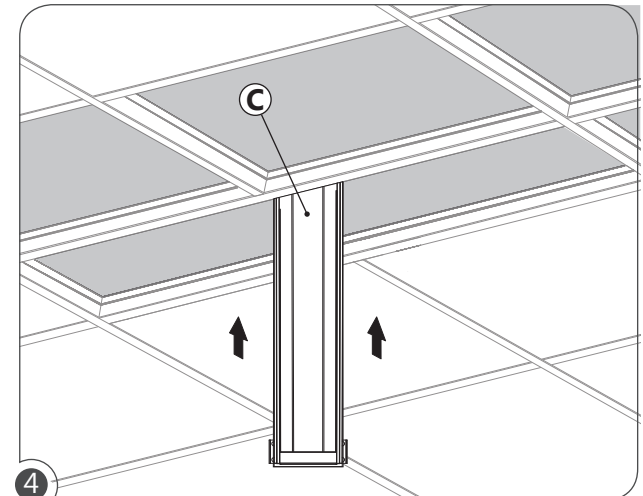
1 Ensure that the power to the fixture's circuit is turned off. Remove lens (A) and lamps (B), if installed, from fixture (C).



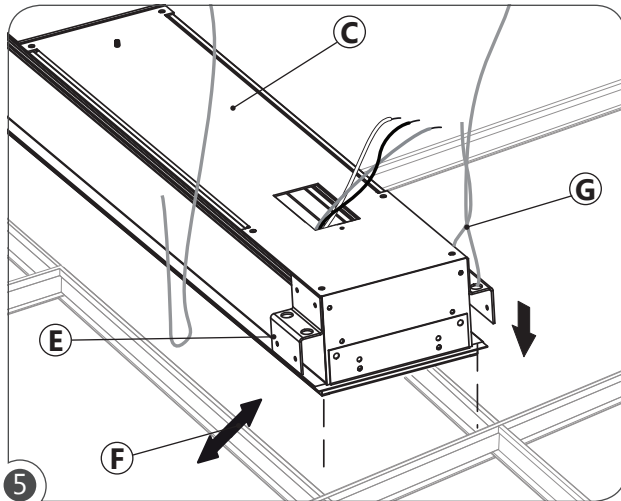
2 If not installed, screw safety brackets (E) to the fixture (C) using the supplied screws.



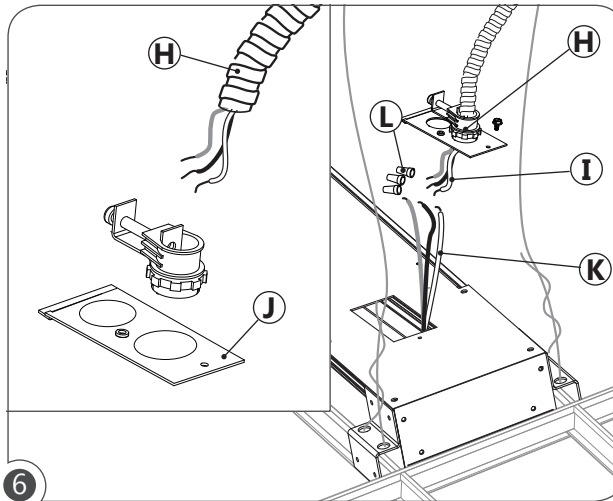
3 Remove the ceiling tiles (D) where the fixture will be installed and adjacent tiles for easy access.



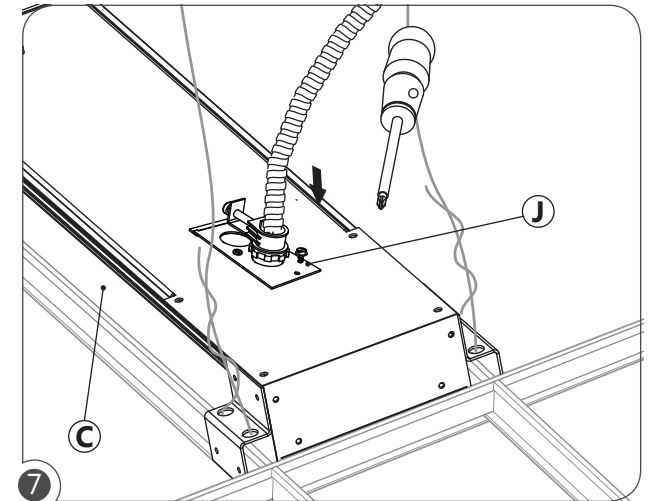
4 Insert the fixture (C) into the ceiling as shown.



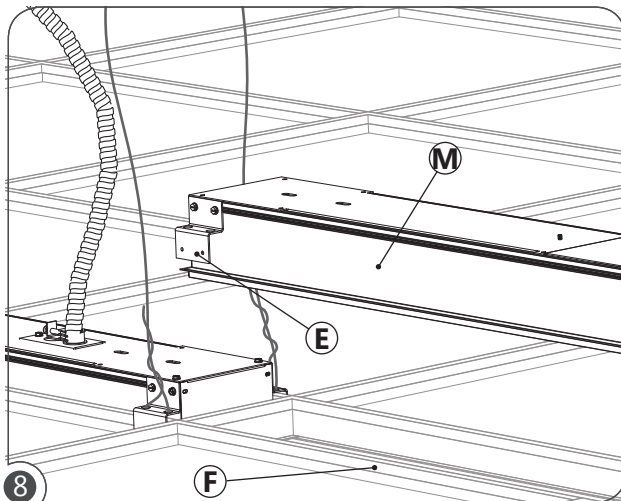
Lower fixture (C) onto the T-bar runner (F). Ensure that safety brackets (E) sit above the T-bars (F). For additional safety a security wire (G) can be attached from the safety brackets (E) to the structure above.



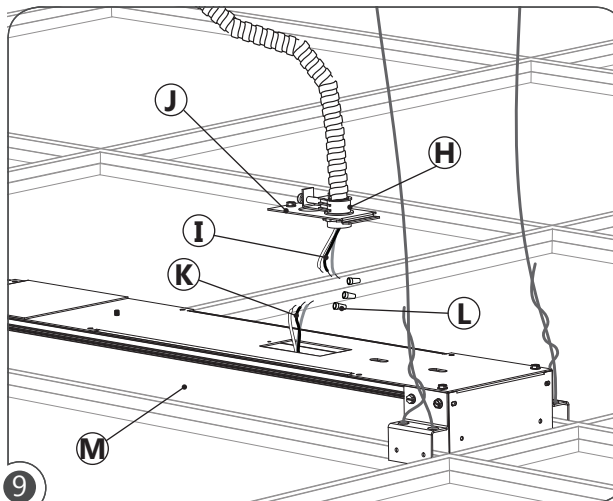
Pass the BX cable (I) into the BX cable connector (H). Install BX cable connector (H) on to the knockout plate (J). Connect BX cable (I) wires to the ballast wires (K) using the wire nuts (L).



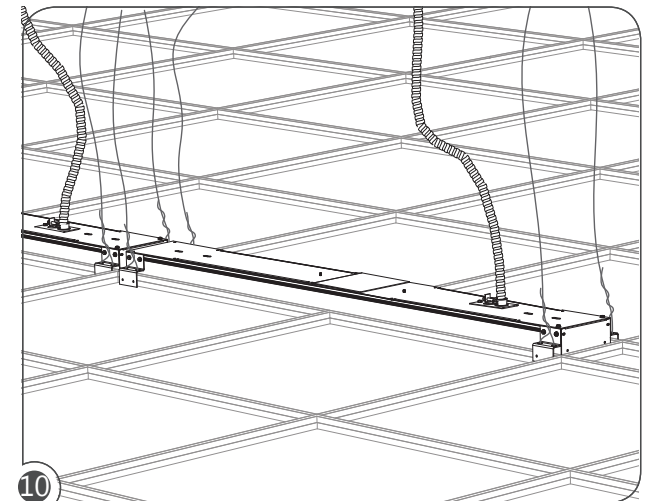
Secure knockout plate (J) to fixture (C) by fastening screws.



Lower the next fixture (M) onto the flange of the T-bar runner (F). Ensure that safety brackets (E) sit above the T-bars (F).



Repeat step 6 and 7 to all fixtures in the row.



Make sure that all fixtures are correctly secured and oriented in relation to the other fixtures. Re-install lamps and lenses on all fixtures. Power to the fixtures can now be safely turned on.