

# MIPOLAM PREMIUM DRY-TEX™ SYSTEM

THE CURE FOR HIGH MOISTURE SUBFLOORS

[gerflorusa.com](http://gerflorusa.com)

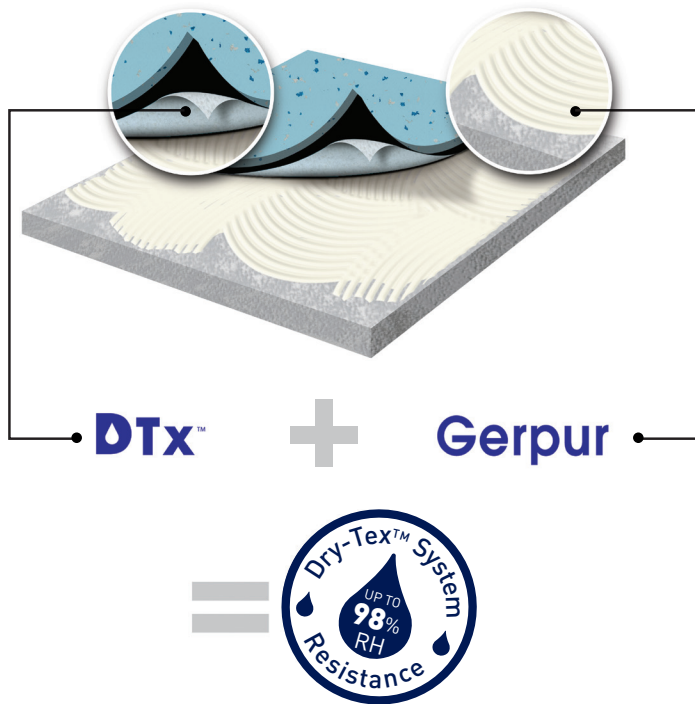


**Gerflor**  
theflooringroup

# MIPOLAM PREMIUM DRY-TEX™ SYSTEM

## THE CURE FOR HIGH MOISTURE SUBFLOORS

Since its introduction in 2009, our exclusive Dry-Text™ System has proven to be the most reliable, time-saving, cost effective solution when faced with high moisture. Today, our Dry-Text™ System is the only full-spread adhesive flooring installation proven to resist up to 98% RH / 15 lbs moisture.



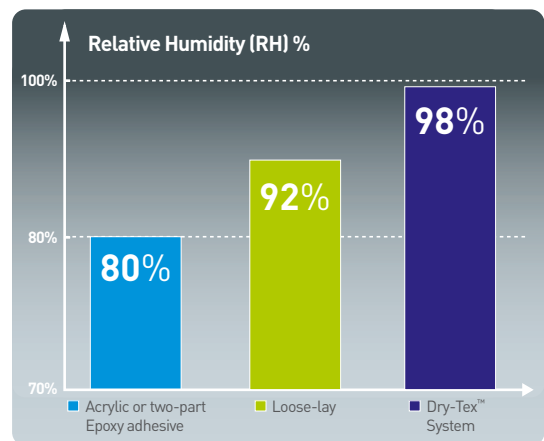
### HOW THE DRY-TEX™ SYSTEM WORKS

- **DTx™** is a textile backing that allows a proper bonding of the adhesive onto the flooring.
- **Gerpur** is a proprietary moisture cured adhesive using breakthrough technology, which reacts to humidity. The higher the moisture, the better the bonding!

Together, this revolutionary, **ONE STEP** system is proven to resist up to **98% RH / 15 lbs moisture**.

- **Save time and money:** Prevent delays and avoid unexpected costs due to high moisture within concrete slabs. Specify the Mipolam Premium Dry-Text™ System.
- **The ONLY one-step, full-spread adhesive solution:**
  - NO risk of shifting or curling floors under heavy rolling loads such as wheeled traffic.
  - NO water trapping means reduced risk of mold growth.
- **No bubbling today, no bubbling EVER.**

### HIGHEST MOISTURE TOLERANCE



Up to 70% cost savings compared to other third-party mitigation systems: up to \$7 / ft<sup>2</sup> savings.



Mipolam Wall DecoWood

## Time is Everything.

Construction timelines are getting shorter, meaning less time for slabs to dry. Don't risk ending up with bubbling floors. Instead, specify the Mipolam Premium Dry-Text™ System: the only full-spread adhesive floor that mitigates moisture (up to 98% RH / 15 lbs moisture), reduces the risk of mold growth, and lets you leave your design legacy—not bubbles.



### SAVE TIME AND MONEY

Avoid unexpected costs, delays, or extra steps

Eliminate costly third party mitigation systems

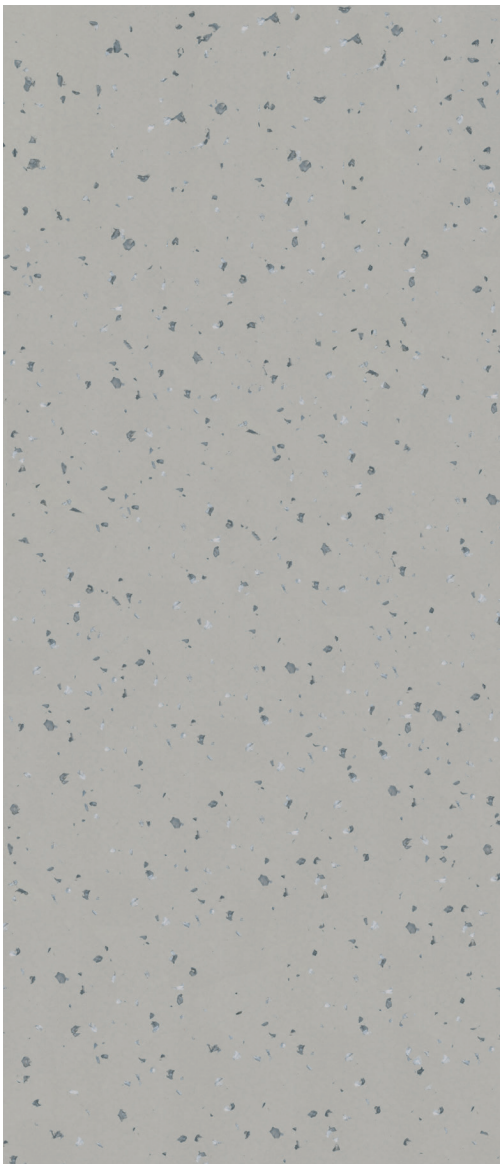
# MIPOLAM PREMIUM DRY-TEX™ SYSTEM

## INSPIRED DESIGNS

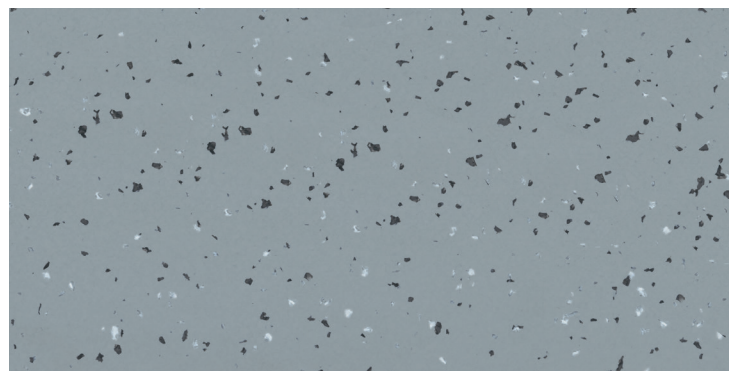
**Inspiration can be found in everything**—from the natural hues of desert sand to the organic patterns found in the earth and sky. Each design in the Mipolam Premium Dry-Tex™ System was created to compliment both classic and contemporary palettes. Whatever inspiration guides your design, our floors will complete your vision.



 Compact	6' 6"	 Evercare™	 FloorScore™
---	-------	---	---

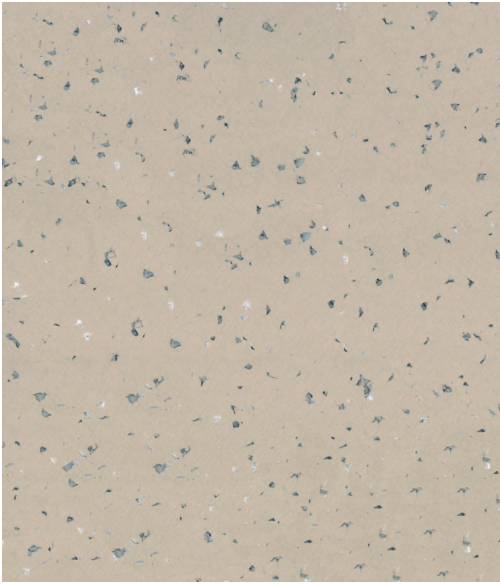


INDIANA - **3788** Smoke DTx WR: 2599

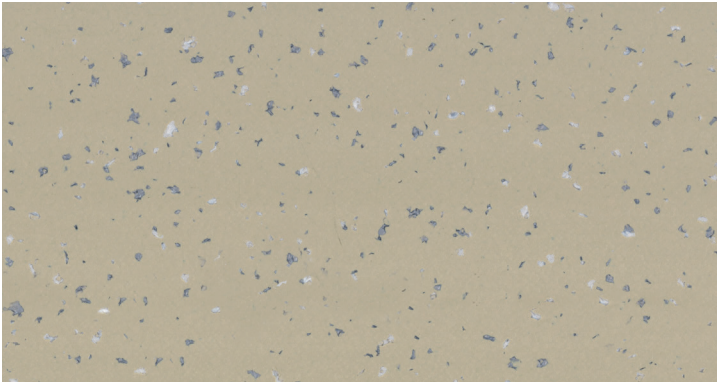


INDIANA - **4003** Wolf DTx

WR: 0586

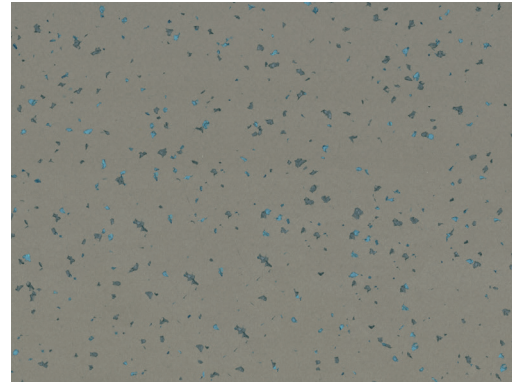


INDIANA - **4343** Canyon DTx WR: 2628



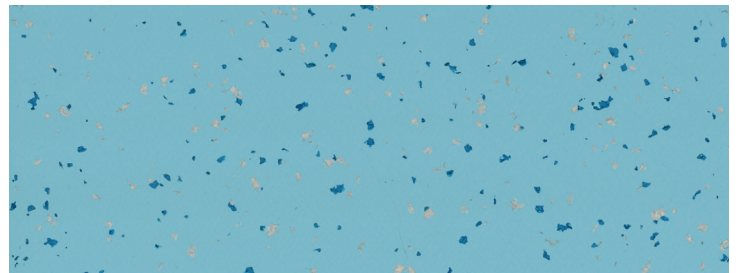
INDIANA - **4029** Desert DTx

WR: 2174



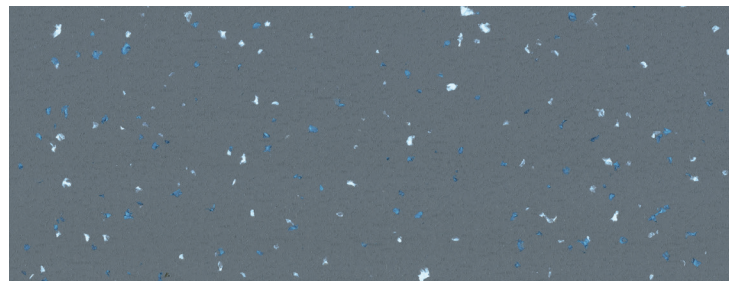
INDIANA - **8053** Moss DTx

WR: 2524



INDIANA - **4475** Oasis DTx

WR: 2521



INDIANA - **4004** Nightfall DTx

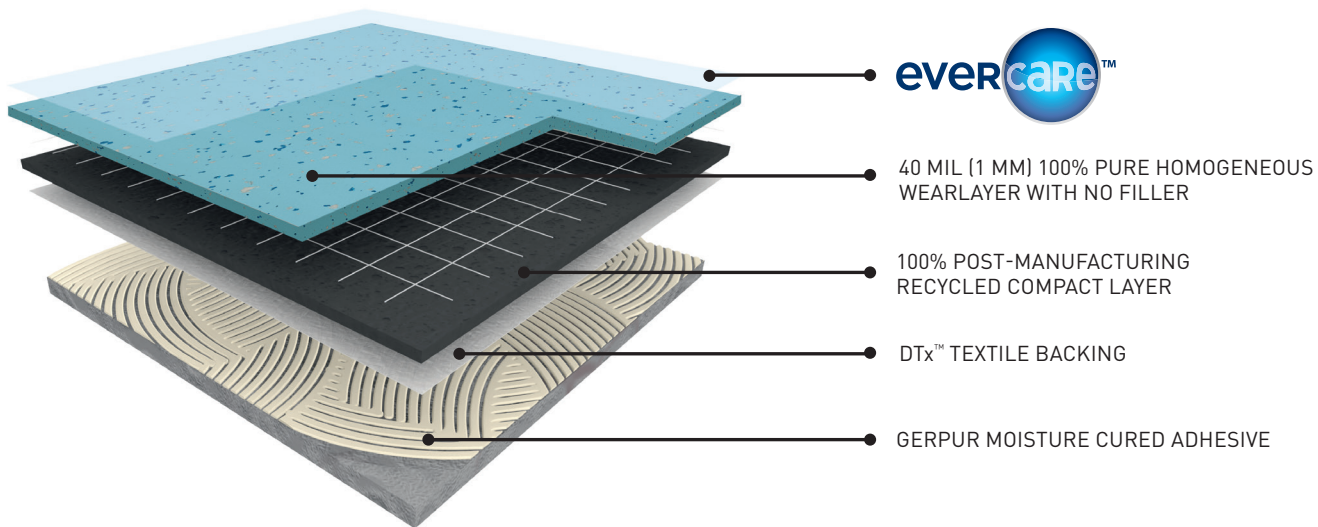
WR: 2172

# MIPOLAM PREMIUM DRY-TEX™ SYSTEM

## The best resilient sheet flooring since 1937—now with our Dry-Text™ System

Gerflor's highest performing 6'6" wide, 2 mm thick resilient sheet flooring provides superior wear resistance to high traffic with a 40 mil (1 mm) homogeneous pure wearlayer with zero filler. Structurally reinforced with a fiberglass grid, Mipolam Premium Dry-Text™ System has a 100% post-manufacturing recycled compact backing, making it a sustainable choice.

Exceptional chemical stain resistance is guaranteed by our patented Evercare™ Surface Treatment, while moisture problems are eliminated by our revolutionary Dry-Text™ System—proven to tolerate up to 98% RH / 15 lbs moisture and inhibit the growth of harmful mold and bacteria.



### EXCLUSIVE DRY-TEX™ SYSTEM

- The only moisture mitigation system integrated in the backing of the flooring.
- One-step, full-spread adhesive installation.
- Proven up to 98% RH / 15 lbs moisture resistance.
- No bubbling today, no bubbling ever.

### MIPOLAM: THE BEST RESILIENT SHEET FLOORING SINCE 1937

- Premium 40 mil (1 mm) thick, 100% pure homogeneous wearlayer with no filler.
- Colored chip design throughout wearlayer ensures designs last. Guaranteed.
- Best wear resistance in the industry.



# MIPOLAM PREMIUM DRY-TEX™ SYSTEM

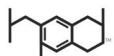
DESCRIPTION	STANDARDS	REQUIREMENTS	MIPOLAM PREMIUM DRY-TEX™ SYSTEM
<b>PRODUCT DESCRIPTION</b>			
Reference Specification	ASTM F1303	-	Type 1 Grade 1 Class A
Gauge Total Thickness	ASTM F386	-	0.08" (2.1mm)
Wearlayer Thickness	-	-	40 mil (>1 mm) 100% pure homogeneous / no filler
Surface Treatment / Maintenance	-	-	<b>Evercare™</b> / No wax for life
Roll Width	-	-	6'6" (2 m)
Roll Length	-	-	66' (20 m)
Coverage / Roll	-	-	430 ft² (40 m²)
Weight	-	-	0.545 lb/ft² (2660 kg/m²)
<b>PERFORMANCE</b>			
Static Load (250 psi)	ASTM F970	≤ 0.005"	-0.003" Meets requirements
Maximum Static Load Limit	-	-	500 psi
Dynamic Rolling Load (100 lbs; 500 cycles)	ASTM F2753	-	No change
Static Coefficient of Friction	ASTM C1028	-	0.85 Dry / 0.66 Wet
Dimensional Stability	-	-	Meets requirements
Flexibility	ASTM F137	> 1.5"	Meets requirements
Resistance to Heat	ASTM F1514	ΔE ≤ 8	Excellent
Resistance to Light	ASTM F1515	ΔE ≤ 8	Excellent
Chemical & Stain Resistance (5 min and 24 hours)	ASTM F925	-	Excellent
Impact Insulation Class (IIC)	ASTM E989	-	42 dB
Fire Rating	ASTM E648	Class 1	Class 1
Smoke Density (Flaming and Non-Flaming)	ASTM E662	-	Meets requirements
<b>ENVIRONMENT HEALTH &amp; SAFETY</b>			
Antibacterial Treatment: Combats MRSA, E. coli and S. aureus*	ISO 22196	-	Inhibits spread of infection at 99%
Allergen-Free	-	-	100% Allergen-Free
Plant Certifications	-	-	ISO 14001, ISO 9001
Production Waste	-	-	Manufacturing Waste Recycled
<b>MATERIALS &amp; RESOURCES: BUILDING PRODUCT DISCLOSURE &amp; OPTIMIZATION (BPDO)</b>			
Sourcing of Raw Materials: Recycled Content	MR 4 LEED v3	-	49%
	Sourcing LEED v4		
Restriction Use of Harmful Chemicals	Materials LEED v4	-	100% REACH Compliant
Environmental Product Declaration (EPD)	EPD LEED v4	-	Available upon request
Health Product Declaration (HPD)	Materials LEED v4	-	Self declared
<b>MATERIALS &amp; RESOURCES: INDOOR ENVIRONMENT QUALITY (IEQ)</b>			
Indoor Air Quality / Low Emitting Materials	IEQ 4.3 LEED v3	-	FloorScore™ Certified
	IEQ Option 1 LEED v4		
TVOC After 28 Days	ISO 16000-6	-	< 10 µg/m³
<b>INSTALLATION METHOD</b>			
Dry-Tex™ System	ASTM F2170 (F1869)	≤98% RH (<15 lbs)	
<b>WARRANTY</b>	10-year limited manufacturer warranty when installed in accordance with Gerflor's installation instructions on <a href="http://www.gerflorusa.com">www.gerflorusa.com</a> .		

\*The implementation of an effective cleaning method is the best defense against infection.



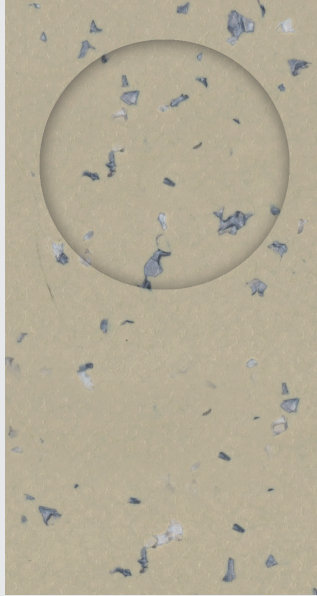
**NO heavy metals,**  
CMR 1, or CMR 2

**EPD®**  
Available





**Synthetic Rubber**  
Chip design fades after just 1,600 abrasion cycles



**Mipolam Premium Dry-TeX System**  
Chip design remains after 4,000 abrasion cycles

# Superior Wear Resistance: DESIGN THAT NEVER FADES

The Mipolam Premium Dry-TeX™ System stands up to high traffic and remains unsurpassed in abrasion resistance testing.

- 100% pure homogeneous wearlayer with no filler (40 mil / 1 mm thick).
- Colored chip design throughout wearlayer ensures lasting designs. Guaranteed.
- Best wear resistance in the industry.
- Ideal for high traffic areas.



## EVERCARE™: UNSURPASSED CHEMICAL STAIN RESISTANCE

- Extreme chemical stain resistance.
- Non-glaring surface ideal for healthcare and visibility of designs.
- No wax for life, easy maintenance.
- 30% savings on maintenance costs from less water and detergent use.

**99%**  
ANTIMICROBIAL

## 99% ANTIMICROBIAL: THE SAFEST, HEALTHIEST FLOORING CHOICE

- Inhibits spread of bacteria up to 99%.
- Combats MRSA, E. coli, S. aureus (ISO 22196).



## SOUND MANAGEMENT: BETTER COMFORT FOR ALL

- Less noise in high traffic areas.
- Up to 15 dB noise reduction compared to ceramic tiles, VCT, concrete and other homogeneous flooring.



# Over 2.5 million square feet installed in the U.S. with no failures



## PROVEN RESULTS. GUARANTEED.

- The same proven Dry-Tex™ System used in Taraflex® Sports Flooring since 2009 is now available for high-traffic commercial spaces.
- 10-year moisture resistance limited warranty.



## NEW CENTURY JOHNSON COUNTY PARKS AND RECREATION

The first LEED Gold community center in the Kansas City metro area  
More than 45,000 square feet of flooring with Dry-Tex™ System

installed **45** days after the slab was poured



## A SUSTAINABLE SOLUTION

- Contributes to LEED v3, LEED v4.
- 100% REACH compliant.
- Recyclable.
- Made of recycled content.
- EPD and HPD available upon request.
- Best indoor air quality: less than 10 µg/m<sup>3</sup>.
- FloorScore™ certified: up to 90% lower VOC emissions than required.
- 100% allergen-free: reduced risk of mold growth.





Taralay Impression Wood  
OTTAWA 0592 Poplar

# LEADERSHIP IN HEALTHCARE



**500**

**MILLION PATIENTS** healed every day on Gerflor floors—that's 1.5x the US population



**OVER**

**500**

**MILLION** square feet installed in healthcare applications worldwide

**OVER**

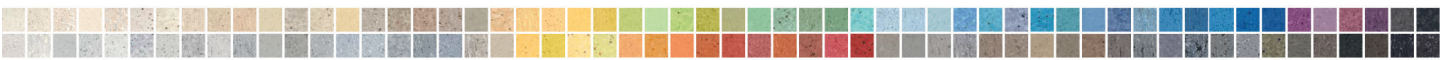
**500**

**HEALTHCARE PROJECTS** completed by Gerflor every year




The medical profession has its specialists.

For flooring, it has Mipolam®.



Choose the world's healthiest, safest flooring for healthcare, **Mipolam Medical**. It's the only naturally antimicrobial resilient sheet flooring proven with ISO 22196 compliance and available in bio-based options. Bring your designs to life with over 112 colors and consult the healthcare flooring specialists at Gerflor USA.

877-437-3567 | [gerflorusa.com](http://gerflorusa.com) |     





GERFLOR USA  
 877.437.3567  
 info@gerflorusa.com

gerflorusa.com



## Installs Sooner. Lasts Longer.

Mipolam Premium Dry-Tex™ System is the cure for high moisture subfloors. The best resilient sheet flooring since 1937—now with our revolutionary one-step moisture mitigation system.

- Always stocked in the USA
- Products and samples ship direct from Chicago within 3 business days
- \$150 flat shipping fee
- 10-year Gerflor limited warranty

SAMPLES:  
[samples@gerflorusa.com](mailto:samples@gerflorusa.com)

ORDERS:  
[orders@gerflorusa.com](mailto:orders@gerflorusa.com)

February 2015. | Imagine.



Health & Safety



ISO 14001



Recycling



LCA  
 Life-cycle Assessment

Committed to Sustainable Development



Follow us on social media!

**Gerflor**<sup>®</sup>  
 theflooringgroup