



# TARALAY IMPRESSION



**TARALAY IMPRESSION COMPACT/COMFORT** is a 6'6" multi-layered resilient sheet flooring. It features a printed design protected by a 28 mil [0.7 mm] thick, 100% pure vinyl transparent wearlayer, reinforced with a fiberglass interlayer. It is available with a compact backing for high traffic areas or with a Very High Density [VHD] foam comfort backing providing comfort underfoot and sound management properties, ideal for childcare areas and for staff standing long hours.

**OUR PROTECSOL® 2** is a patented UV cured surface treatment providing superior stain resistance and a no wax for life solution reducing the need for harsh cleaning chemicals.

- ▶ No wax for life
- ▶ 80% reduced water and detergent use
- ▶ New matte effect with improved realism of wood appearance

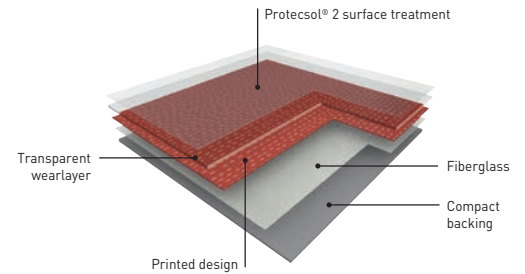
**NATURALLY BACTERIOSTATIC** to limit the spread of infections.

- ▶ ISO 22196 certified at 99%

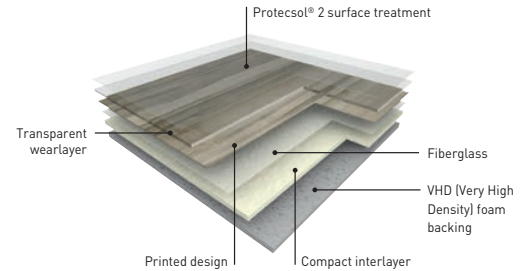
**CONTRIBUTES TO A SUSTAINABLE ENVIRONMENT**

- ▶ 100% REACH compliant
- ▶ Extremely low VOC and allergen-free
- ▶ FloorScore® certified
- ▶ Third party certified product-specific Type III EPD available

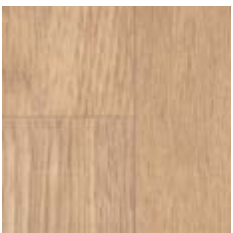
## COMPACT



## COMFORT



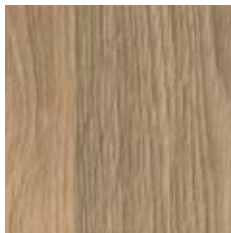
## WOOD



0538  
HABANA VINALES



0722  
HERRINGBONE BLOND



0522  
HABANA TRINIDAD



0724  
HERRINGBONE CHATAIN



0721  
CHARME NATURAL



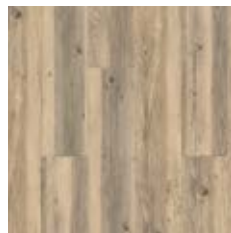
0723  
CHARME PECAN



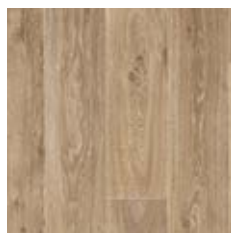
0671  
LOFT LIGHT BROWN



0734  
LOFT CHESTNUT



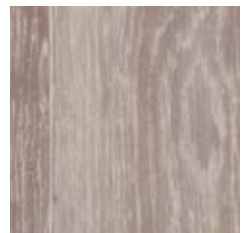
0760  
MOON ISLAND



0371  
NOMA RUSTIC



0373  
NOMA ICE



0519  
NOMA BEIGE

# TARALAY IMPRESSION

## WOOD



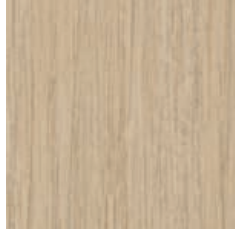
0773  
PORTOBELLO



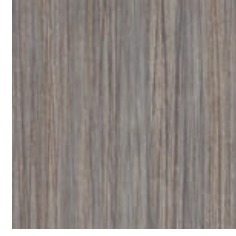
0528  
WALNUT CREAM



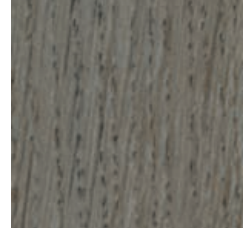
1314  
WALNUT BROWN



0720  
INFINITY AUBE



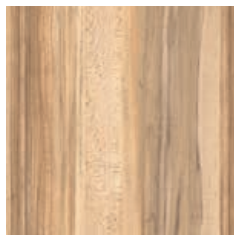
0719  
INFINITY LICHEN



0068  
RENZO PECAN



0025  
RENZO TAUPE



0727  
SYCAMORE VANILLA

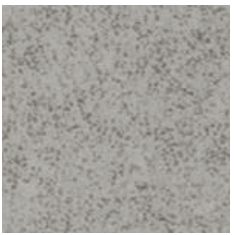


0726  
SYCAMORE DARK



0725  
SYCAMORE LIGHT BROWN

## CEMENTO



0543  
CEMENTO BRESCIA



0523  
CEMENTO GENOVA



0524  
CEMENTO CAPRI



0525  
CEMENTO MODENA



0774  
TRAME CLEAR



0776  
TRAME BEIGE

## TRAME

## MOHAIR



0769  
MOHAIR WHITE



0767  
MOHAIR NATURAL



0766  
MOHAIR DARK

## GENTLEMEN



0770  
GENTLEMEN CLEAR



0771  
GENTLEMEN GREY



0772  
GENTLEMEN COFFEE

# TARALAY IMPRESSION

## CORNER



0728  
CORNER OFFWHITE



0729  
CORNER METAL



0730  
CORNER LIGHT BEIGE



0733  
CORNER COPPER



0740  
CORNER TURQUOISE



0739  
CORNER ANIS



0741  
CORNER TOMETTE

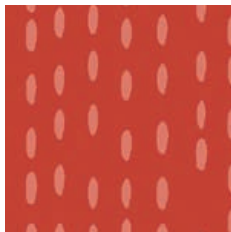
## RICE



0759  
RICE MUSTARD



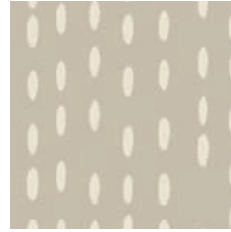
0735  
RICE LIGHT GREEN



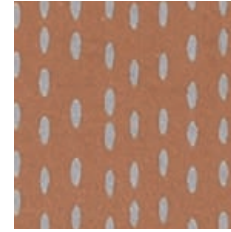
0757  
RICE COQUELICOT



0737  
RICE SOURIS



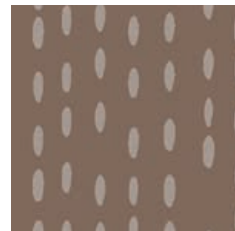
0763  
RICE GREIGE



0738  
RICE COPPER



0736  
RICE CHAMPAGNE



0762  
RICE BROWN

# TARALAY IMPRESSION

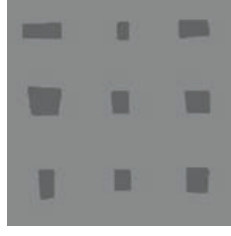
## KUBES



0755  
KUBES WHITE



0750  
KUBES SUN



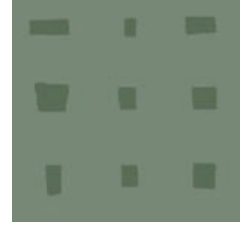
0753  
KUBES GREY



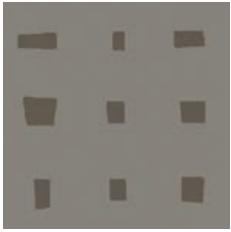
0756  
KUBES BEIGE



0752  
KUBES GOLD

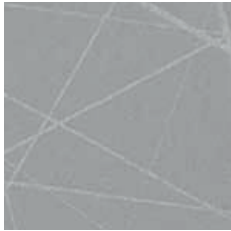


0747  
KUBES OLIVE



0751  
KUBES TAUPE

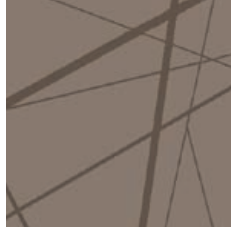
## NEST



0745  
NEST METAL



0746  
NEST BLACK



0765  
NEST TAUPE

## STARS



0764  
STARS ORANGE



0744  
STARS ANTHRACITE



# TARALAY IMPRESSION



6' 6"

Protecsol® 2

FloorScore®

EPD®

DESCRIPTION	STANDARDS	REQUIREMENTS	TARALAY IMPRESSION COMPACT	TARALAY IMPRESSION COMFORT
<b>PRODUCT DESCRIPTION</b>				
Reference Specification	ASTM F1303	-	Type 1, Grade 1 (Meets Requirements)	
Backing	ASTM F1303	-	Type B	Type C
Surface Treatment / Maintenance	-	-	Protecsol® 2 / No wax for life	
Gauge Total Thickness	ASTM F386	-	0.08" (2.0 mm)	0.13" (3.35 mm)
Wearlayer Thickness	ASTM F410	> 0.02" (0.5 mm)	28 mil (0.7 mm)	
Roll Width	-	-	6'6" (2 m)	
Roll Length	-	-	82' (25 m)	
Coverage / Roll	-	-	538 ft² (50 m²)	
Weight	-	-	0.54 lb/ft² (2635 g/m²)	0.58 lb/ft² (2825 g/m²)
<b>PERFORMANCE</b>				
Static Load (175 psi)	ASTM F970	≤ 0.005"	≤ 0.001" (≤ 0.03 mm)	≤ 0.002" (≤ 0.05 mm)
Maximum Static Load Limit	ASTM F970	≤ 0.005"	800 psi	500 psi
Abrasion	-	-	≤ 0.12 in³ (≤ 3 mm³)	
Indentation - Residual (75 lb)	ASTM 1914	≤ - 0.012"	≤ - 0.001" (≤ - 0.03 mm)	Meets Requirements
Flexibility	ASTM F137	> 1.5"	Meets Requirements	
Coefficient of Friction	ASTM D2047	-	0.57 (Dry) / 0.68 (Wet)	
Resistance to Heat	ASTM F1514	ΔE ≤ 8	Meets Requirements	
Resistance to Light	ASTM F1515	ΔE ≤ 8	Meets Requirements	
Dimensional Stability	-	-	Meets Requirements	
Impact Insulation Class (IIC)	ASTM E989 (ASTM E492)	-	46 dB	59 dB
Chemical & Stain Resistance (5 min. and 24 hours)	ASTM F925	-	Excellent (results available upon request)	
Fire Rating	ASTM E648	Class 1	Class 1	
Smoke Density (Flaming and Non-Flaming)	ASTM E662	-	Meets Requirements	
<b>ENVIRONMENT HEALTH &amp; SAFETY</b>				
Naturally Bacteriostatic: Combats MRSA, E. coli, S. aureus*	ISO 22196	-	Limits spread of infection at 99%	
Allergen-Free	-	-	100% Allergen-Free	
Plant Certifications	-	-	ISO 14001, ISO 9001	
Production Waste	MRC3 LEED v4	-	100% Manufacturing Waste Recycled	
<b>MATERIALS &amp; RESOURCES, BUILDING PRODUCT DISCLOSURE &amp; OPTIMIZATION (BPDD)</b>				
Restriction Use of Harmful Chemicals	MRC4 LEED v4	-	100% REACH Compliant	
Environmental Product Declaration (EPD)	MRC2 LEED v4	-	Type III Product-Specific	
Health Product Declaration (HPD)	Materials LEED v4	-	Self-Declared	
<b>MATERIALS &amp; RESOURCES, INDOOR ENVIRONMENTAL QUALITY (IEQ)</b>				
Indoor Air Quality / Low Emitting Materials	EQc2 LEED v4	-	FloorScore® Certified	
TVOC after 28 Days	ISO 16000-6	-	< 70 µg/m³	
<b>WARRANTY</b>	Limited manufacturer warranty available on <a href="http://www.gerflorusa.com">www.gerflorusa.com</a>			

\*The implementation of an effective cleaning method is the best defense against infection.



**NO heavy metals,**  
CMR 1, or CMR 2

