

T-LEG BEAM SEATING

T-Leg beam seating features 1" x 2" arched rectangular steel tube bases with 2" elliptical steel columns attached to a steel beam. Your choice of several ERG seat styles and optional tables to fit your space.



THREE SEAT BEAM WITH WEBBY SEATS AND UPHOLSTERED SEAT INSERTS



T-LEG DETAIL

ORDERING INFORMATION

To Order Please Specify:

- | | |
|------------------------------------|---------------------------------|
| 1) Series Name | 8) Upholstery |
| 2) Model Number | 9) Wood Seat Stain Color |
| 3) Quantity | 10) Table Choice |
| 4) Frame Color | 11) Laminate Selection / Number |
| 5) Layout of Seats / Arms / Tables | 12) PVC Convex Table Edge Color |
| 6) Number of Seats | 13) Any Accessories or Options |
| 7) Seat Choice | |



BEAM SEATING GENERAL SPECIFICATIONS

Frame Construction

The Beam frame is fabricated with 1" x 2" arched rectangular steel tube bases and 2" elliptical steel tube columns attached to a steel beam. The beam and legs are sand blasted and then powder coated for maximum paint adhesion.

Finish

Standard powder coat colors available.

Choice of Seats

Choose from several ERG seat styles, featuring hundreds of material and upholstery combinations.

Optional Table Tops

Laminate table top is 1.25" thick high density particle board with a PVC convex T-mold edge. Your choice of over 1000 standard laminates from brands like Nevamar, Wilsonart, Formica and Pionite.

Note

Beam seating frames are free standing. Floor mount legs are optional.

COLORS / FINISHES

Frame Finish Colors:

Standard powder coat colors available.

Wood Seat Stain Colors:

All transparent wood stain colors available.

OPTIONS

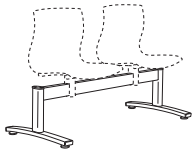
- CODE: FM - Floor Mount
- CODE: FS/CL - Free Standing Interconnecting Legs
- CODE: BBC - Back To Back Connector Bar
- CODE: FR - CAL 133 (TB 133) Flame Retardant
- CODE: MB - Moisture Barrier.
- CODE: ENG - Laser Engraving
- CODE: TT - Two Tone Wood Stains
- CODE: RB -Reverse Bubble Back Cutout - Benton
- CODE: UB - Upright Bubble Back Cutout - Benton
- CODE: VB - Vertical Bubble Back Cutout - Benton
- CODE: SQ -Square Hole Cutout Design - Dekko
- CODE: RD - Round Hole Cutout Design - Dekko
- CODE: RECT - Rectilinear Hole Cutout Design - Dekko
- CODE: AC2 - Nylon T-Arms - All Seats
- CODE: OT/S -Online Table - Square
- CODE: OT/R -Online Table - Round
- CODE: OT/E -Online Table - Rounded End
- CODE: OT/90 -Online Table - 90° Corner
- CODE: OT/D -Online Table - Double End

DIMENSIONS	2 Seat Beam	3 Seat Beam	4 Seat Beam
Overall Depth:	24"	24"	24"
Overall Width:	50"	70"	90"
Table Height:	17"	17"	17"
Weight per carton:	68 lb.	88 lb.	108 lb.



THREE SEAT BEAM WITH WEBBY SEATS

MODEL / DESCRIPTION / LIST PRICING FRAME ONLY (ADD SEAT/ARM OPTIONS TO LIST PRICE)

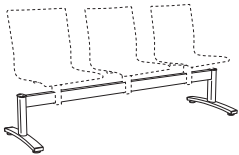


Two seat Beam frame

4202

Steel beam with arched steel tube base and column

Two Seat beam frame
\$1546

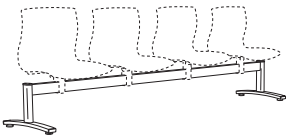


Three seat Beam frame

4203

Steel beam with arched steel tube base and column

Three Seat beam frame
\$1861



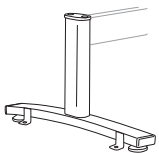
Four seat Beam frame

4204

Steel beam with arched steel tube base and column

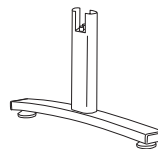
Four Seat beam frame
\$2114

FRAME OPTIONS / LIST PRICING (ADD TO FRAME LIST PRICE)



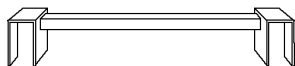
FM - Floor Mount

2 legs / 2 tabs per leg
\$235



FS/CL - Free-Standing Interconnecting Legs

per leg
\$315



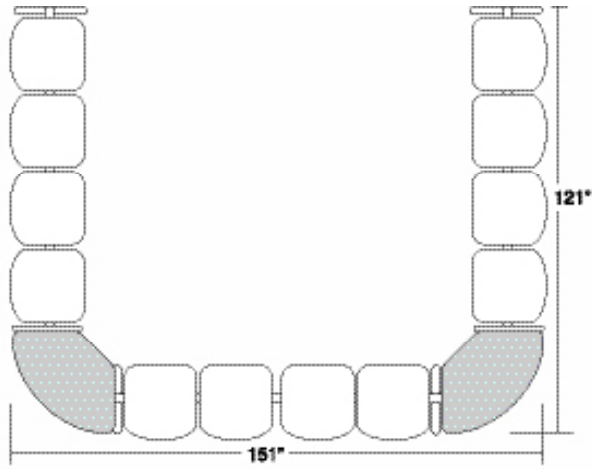
BBC - Back To Back Connector Bar

each
\$271

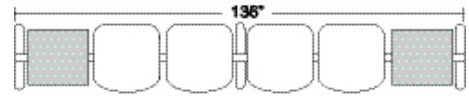
Note:

If the initial order specs adjoining two beams together, FS/CL will be substituted for one of the standard legs at no charge.

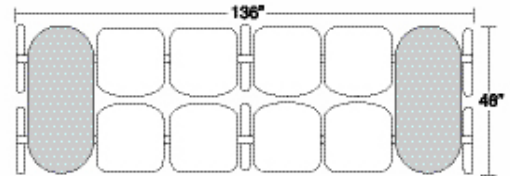
When ordering parts for reconfiguring an existing space, price is \$289 list per leg.



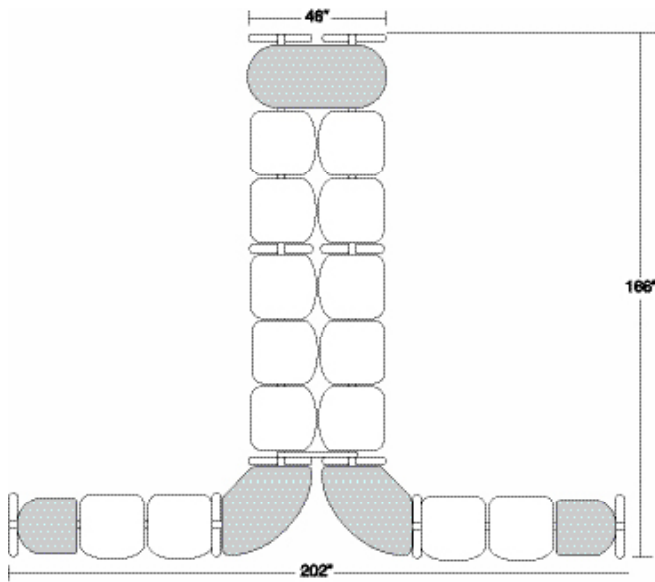
U SHAPE CONFIGURATION



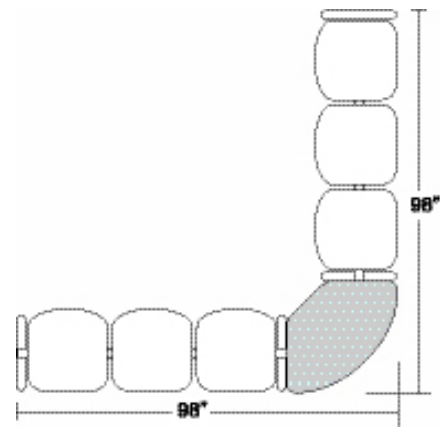
STRAIGHT LINE CONFIGURATION WITH ON-LINE TABLES



BACK TO BACK CONFIGURATION

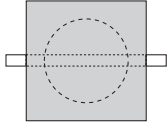


CORNER CONFIGURATION



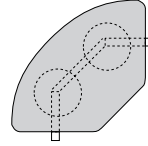
OUTSIDE FACING CORNER CONFIGURATION

ONLINE TABLE OPTIONS / LIST PRICING (ADD TO FRAME LIST PRICE)



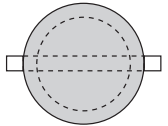
OT/S - Online Table - Square

18" x 18"
\$586



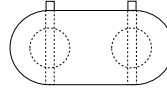
OT/90 - Online Table - 90° Corner

29" x 29"
\$1760



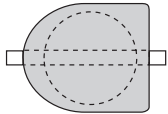
OT/R - Online Table - Round

18" diameter
\$586



OT/D - Online Table - Double End

18" x 46"
\$1512



OT/E - Online Table - Rounded End

18" diameter
\$586

ARM OPTIONS / LIST PRICING (ADD TO FRAME LIST PRICE)



AC2 - Nylon T-Arm - All Seats

per arm
\$210

SEAT OPTIONS / LIST PRICING PER SEAT (ADD TO FRAME LIST PRICE)



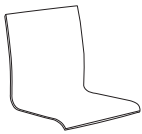
DEMI/B Benton Demi Back

Multi-Ply Hardwood Shell
\$460

DEMI/SIB Benton Demi Back / Upholstered Seat Insert

COM Yardage: 0.5 Yds. / seat

COM	GR1	GR2	GR3	GR4	GR5	GR6	GR7	GR8	GR9	GR10	LEA
\$555	\$594	\$618	\$642	\$668	\$694	\$724	\$752	\$782	\$813	\$846	\$1000



DKO/B Dekko

Multi-Ply Hardwood Shell
\$335

DKO/SIB Dekko / Upholstered Seat Insert

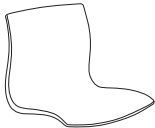
COM Yardage: 0.5 Yds. / seat

COM	GR1	GR2	GR3	GR4	GR5	GR6	GR7	GR8	GR9	GR10	LEA
\$530	\$567	\$590	\$614	\$638	\$664	\$690	\$717	\$747	\$776	\$807	\$954

DKO/SB Dekko / Upholstered Seat and Back Inserts

COM Yardage: 1.5 Yds. / seat

COM	GR1	GR2	GR3	GR4	GR5	GR6	GR7	GR8	GR9	GR10	LEA
\$625	\$668	\$695	\$724	\$752	\$782	\$814	\$846	\$880	\$916	\$953	\$1125



WBY/B Webby Nylon

100% Nylon Plastic Shell
\$335
Please See The Colors and Finishes Guide For All Available Shell Colors

WBY/SIB Webby / Upholstered Seat Insert

COM Yardage: 0.75 Yds. / seat

COM	GR1	GR2	GR3	GR4	GR5	GR6	GR7	GR8	GR9	GR10	LEA
\$429	\$459	\$477	\$497	\$517	\$536	\$558	\$581	\$604	\$628	\$654	\$773

WBY/SB Webby / Upholstered Seat and Back Inserts

COM Yardage: 1.5 Yds. / seat

COM	GR1	GR2	GR3	GR4	GR5	GR6	GR7	GR8	GR9	GR10	LEA
\$524	\$561	\$582	\$607	\$631	\$656	\$682	\$710	\$738	\$767	\$798	\$943

OPTIONS

Add upcharge to list price and code to model number

FM	Floor Mount	\$108 / 2 per leg
FS/CL	Free Standing Interconnecting Legs	\$289 / leg
BBC	Back To Back Connector Bar	\$249 / each
FR	CAL 133 (TB 133) Fire Retardant	\$90 / yard
MB	Moisture Barrier	\$68 / seat
ENG	Laser Engraving Design*	\$85 / seat
TT	Two Tone Wood Stains - Benton / Dekko	\$75 / seat
RB	Reverse Bubble Cutout - Benton	\$75 / seat
UB	Upright Bubble Cutout - Benton	\$75 / seat

VB	Vertical Bubble Cutout - Benton	\$75 / seat
SQ	Square Hole Cutout - Dekko	\$75 / seat
RD	Round Hole Cutout - Dekko	\$75 / seat
RECT	Rectilinear Hole Cutout - Dekko	\$75 / seat
OT/S	Online Table - Square	\$538
OT/R	Online Table - Round	\$538
OT/E	Online Table - Rounded End	\$538
OT/90	Online Table - 90° Corner	\$1615
OT/D	Online Table - Double End	\$1387

*One time setup fee of \$245. Minimum 12 chairs (of same design and series)