



Project: Bank of America  
Architect: Gensler  
Location: New York, USA  
Product: Quadrillo®



### Decoustics Wood Ceiling and Wall Systems

Enhancing any space with the natural beauty of wood has never been easier with Decoustics' line of premium acoustical wood ceiling and wall products. From the premium Quadrillo® panels to the simple lines of Linear Wood and Grille, Decoustics has a solution for any room situation.

Architects and designers rely on Decoustics' ability to manufacture products which meet the highest of standards, ensuring that their designs match their visions.

### Environmental Commitment

By using natural wood veneers with a Medium Density no-added formaldehyde (MDF) core instead of solid wood, Decoustics provides more sustainable product with better dimensional stability. Decoustics uses low VOC emitting cores and lacquers for improved indoor air quality.

Decoustics is Green Circle Certified and is Forest Stewardship Council® (FSC®) certified by the Rainforest Alliance.



Decoustics Ltd. is Forest Stewardship Council® (FSC®) certified by the Rainforest Alliance.



Photo by Neil Alexander®

Project: Summit Partners  
Architect: Gensler  
Location: Massachusetts, USA  
Product: Quadrillo® (Painted White)



Project: Eaton Corporation Headquarters  
Architect: Pickard Chilton Architects, Inc.  
Location: Ohio, USA  
Product: Fori™ Perforated Wood Panels



### Quadrillo®

A sandwich panel with an absorptive acoustical core within an engineered composite wood frame. Two cross-directional layers of v-grooved veneer make the panels highly absorptive with minimal visual perforation.

### Solo-M

A grooved panel with a composite wood core.

### Fori™

Acoustical perforated wood panels with perforations 1/16" (1.6mm) and spaced 5/6" (8mm) apart.

### Solo-T

Acoustical panel that lifts and shifts into a heavy duty 15/16" T-bar grid.

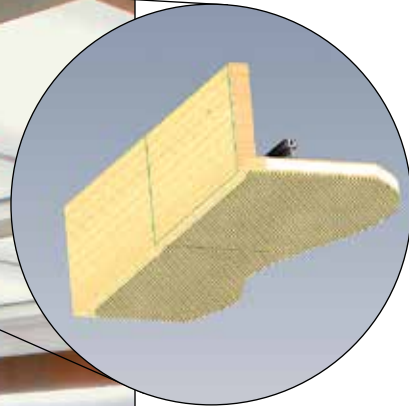
### Solo

Acoustical wood plank consisting of a composite wood core finished in a natural wood veneer. Tongue and groove construction gives the ceiling or wall a monolithic appearance.

### Linear Wood and Grille

Composite wood blade and plank ceiling systems that install into heavy duty 15/16" T-bar grid.

Project: The Baupost Group  
Architect: Visnick & Caulfield  
Location: Massachusetts  
Product: Quadrillo®



Custom Designed Returns complete this boardroom ceiling design.

Project: Symantec Boardroom  
 Architect: HOK  
 Location: California, USA  
 Products: Quadrillo®

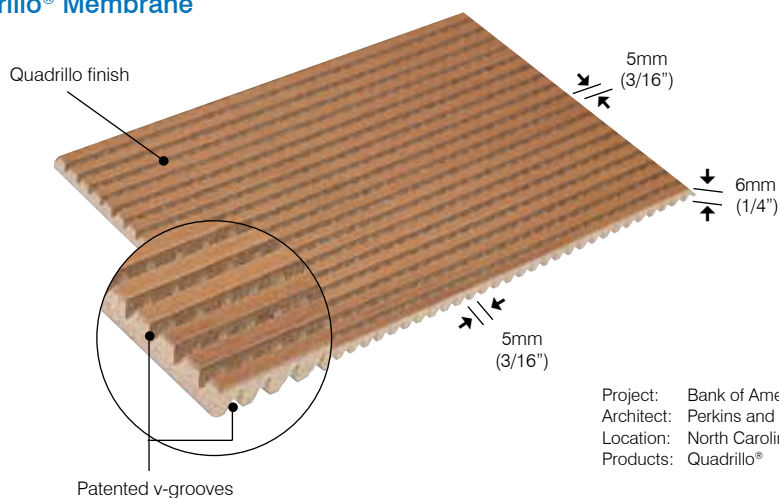
## Quadrillo®

Quadrillo is an acoustical wood panel for use in ceiling or wall applications. The sandwiched wood panel is constructed with a high-performance no-added urea formaldehyde core within an engineered composite wood frame.

Quadrillo is a fully-engineered product and can be completely customized to suit specific project requirements. The panels are available in sizes up to 3' x 5' (914mm x 1524mm) and can be curved to an outside radius of 32" (800mm). Quadrillo is available in a large range of natural wood veneers, stains or paint finishes.

Quadrillo's acoustical absorption is achieved through unique perforations combined with an acoustical core. The percentage of open area is approximately four percent; the v-grooves create a four sided funnel that allows sound to arrive at a variety of angles, focusing the transfer of energy over a broader surface area of absorption.

## Quadrillo® Membrane



Project: Bank of America  
 Architect: Perkins and Will  
 Location: North Carolina, USA  
 Products: Quadrillo®



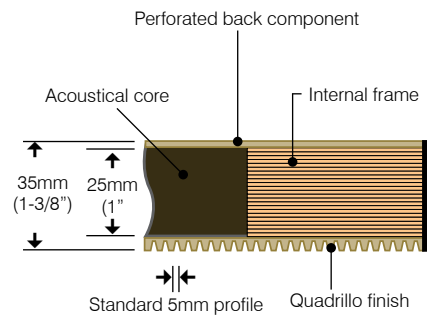
Photo by Steve Hall® Hendric Blessing Photographers





## Cross Section Quadrillo® Panel

(QPP-25)



The Quadrillo core is available in three thicknesses:

- QPP-19 (  $\frac{3}{4}$ " (19mm)),
- QPP-25 (1" (25mm))
- QPP-50 (2" (50mm)).

## Quadrillo® Advantages

- Refined appearance; when viewed at a distance grooves appear as one
- Improve room acoustics with high NRC value\*
- 100% engineered full panel composite; no field modifications necessary
- Grooving can be stopped to create an integral border of any width or you can specify a traditional frame
- Various mounting methods available for ceiling application; including Decoustics Ceilencio 100% downward accessible suspension system

Create your own custom patterns by specifying profile spacings. Solid portions must be in multiples of 5mm.



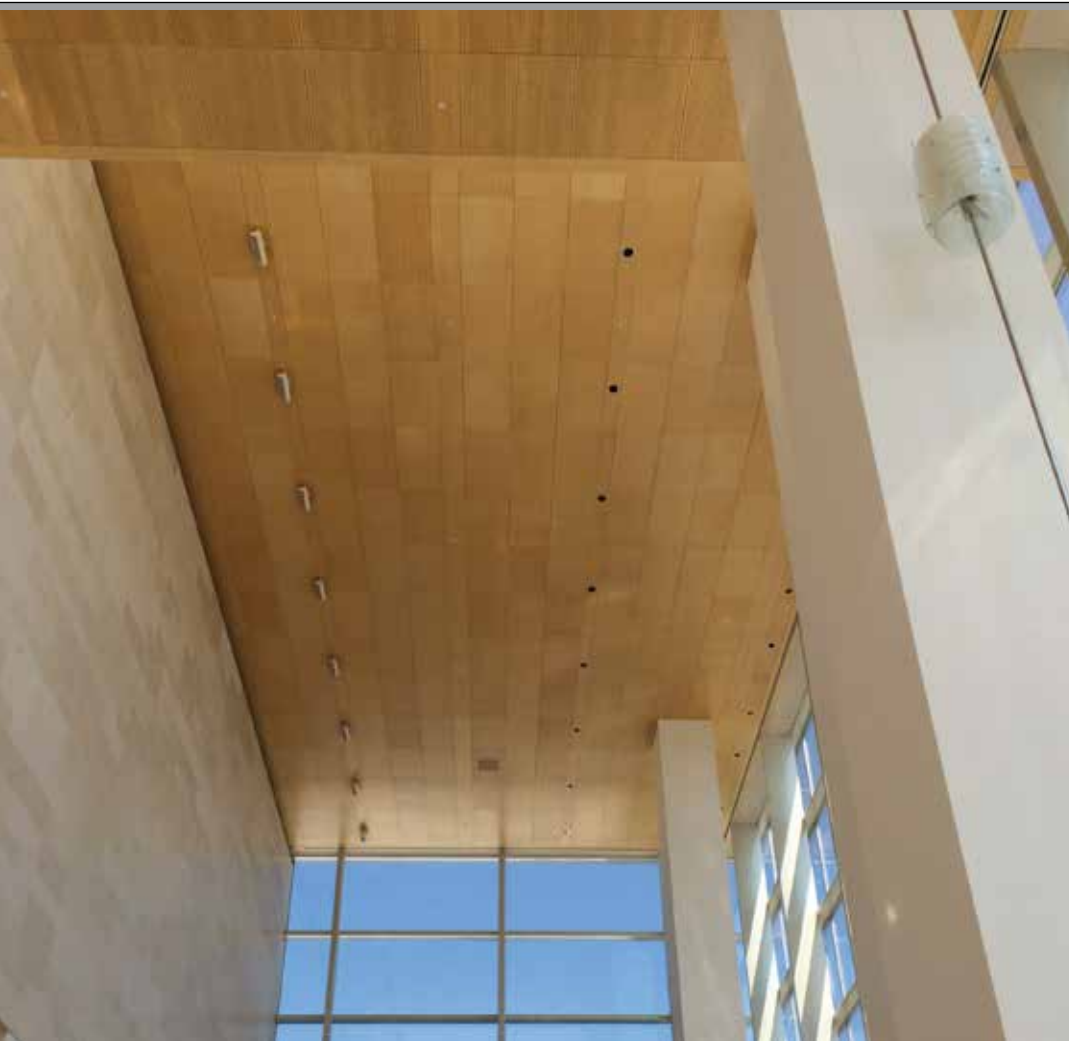
\* NRC Values found of page 15

### Solo-M

Decoustics' Solo-M is a fully customized acoustical ceiling or wall panel. Solo-M panels are available in a variety of natural wood veneers. Custom veneers, stains or paint finishes can be specified. Solo-M veneer lay-up is normally slip matched and quarter cut but can be specified based on design intent. Decoustics' Solo-M panels are engineered to specified sizes up to 3' x 5' (914mm x 1524mm) and can be custom curved to a minimum outside radius of an approximately 32" (800mm).

Solo-M panels are constructed from perforated no-added formaldehyde MDF core with a natural wood veneer laminated to the panel face and an acoustical black matt laminated to the back side of the panel. For additional acoustical performance, optional loose fill insulation can be added to the back of the installed Solo-M panels.

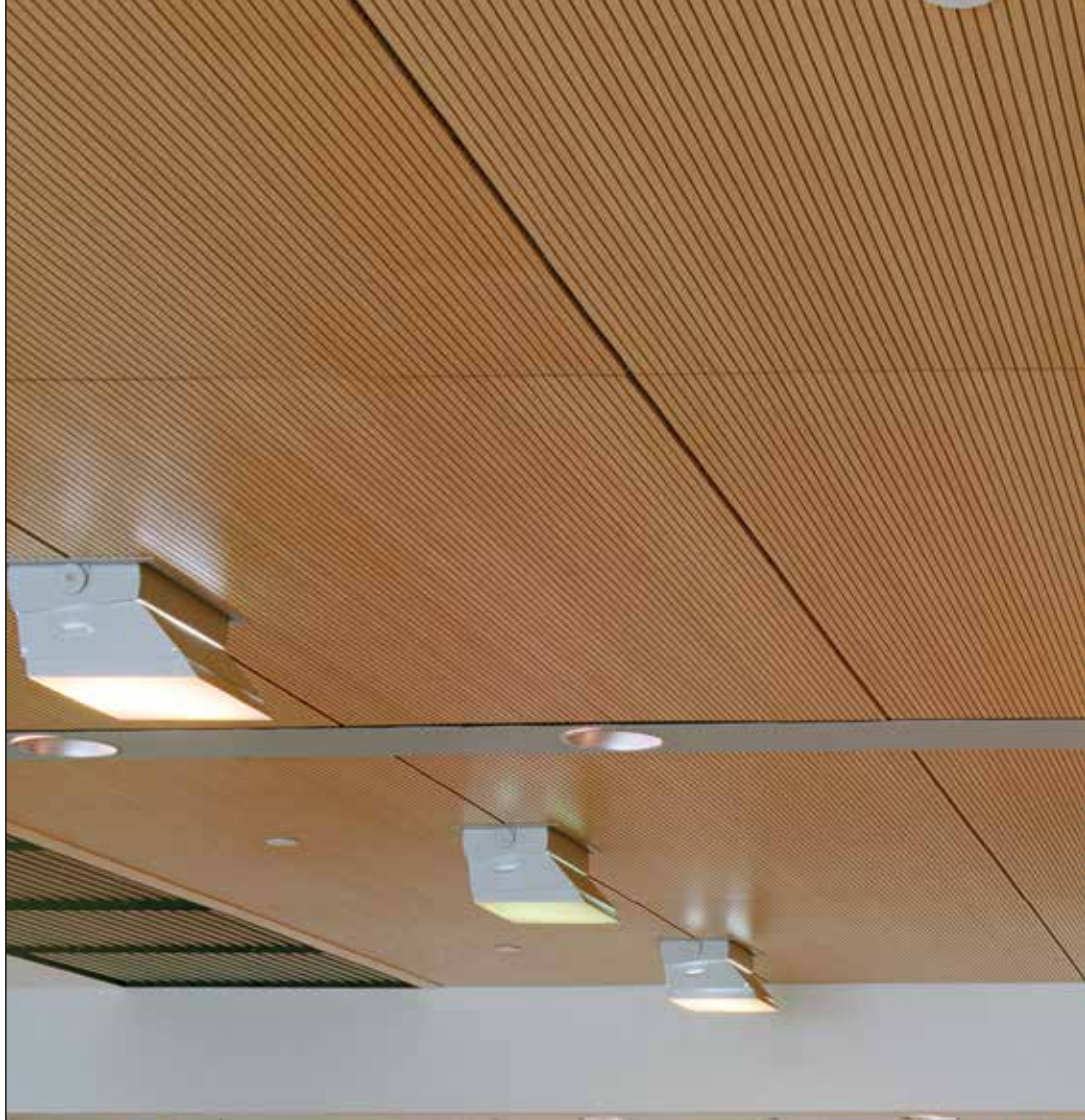
Stop grooved Solo-M wall panels designed with a custom grooved layout and simulated panel joints creating a unique visual appearance.







Fully grooved Solo-M panels, quarter cut slip matched maple veneer. Panels are installed in a direct mount suspension system.



### Solo-M Advantages

- Solo-M is a natural wood veneered ceiling or wall panel
- Class A flame spread when tested in accordance with ASTM E84
- High-performance no-added urea formaldehyde MDF core
- Improve room acoustics with high NRC value\*
- 100% engineered panel; no field modifications necessary
- Grooving can be stopped to create an integral boarder of any width or you can specify a traditional frame
- Various mounting methods available for ceiling application; including Decoustics Ceilencio® 100% downward accessible suspension system

Solo-M panels suspended in Decoustics' Ceilencio® 100% downwardly accessible ceiling suspension system.

\* NRC Values found of page 15



Project: Bridgepoint Health  
 Architect: HDR Architecture Associates, Inc.  
 Location: Ontario, Canada  
 Product: Fori



## Fori™

Fori is an acoustical mini perforated wood panel. When viewed from a distance, the mini perforations virtually disappear, giving the appearance of a monolithic wood ceiling or wall installation. Fori is designed to provide the aesthetics of a solid wood panel with the acoustic properties of a perforated panel.

Fori mini perforated acoustic wood ceiling and wall panels are available in a variety of natural wood veneers, custom stains or paint finishes. Manufactured to custom sizes with the option of unique shapes, Fori panels can be designed to complement any space. For added flexibility in your design, Fori panels can integrate into most of Decoustics' ceiling suspension systems, including Decoustics' 100% downwardly accessible Ceilencio® system.

## Fori™ Advantages

- Fori panels are manufactured from a no-added urea formaldehyde MDF core. perforations are a nominal 1/16" (1.6mm) and spaced 5/16" (8mm) apart.
- Fully-engineered product. No field modifications are required. Engineered to custom sizes up to 4' x 10' (1240mm x 3050mm) and can be curved to an outside radius of approximately 32" (800mm).
- Class A flame spread when tested to ASTM E84 standard
- Fori panels are available in a variety of natural wood veneer options. Custom veneers, stains or paint finishes can be specified.
- NRC values of 0.70 when tested alone in an E400 mounting. Higher NRC values are achievable when acoustical infill is used.

Project: Algonquin College  
 Architect: Edward J Cucaci and Associates  
 Location: Ontario, Canada  
 Product: Fori







### Solo-T

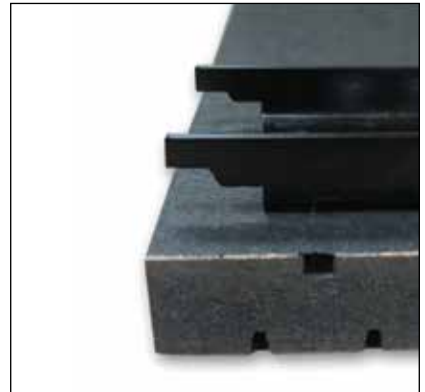
Solo-T is an acoustical panel that lifts and shifts into a heavy duty 15/16" T-bar grid. A simple lift and shift installation conceals the T-bar.

Solo-T allows for complete access into the plenum. Its standard sizes mean field dimensions are not required resulting in faster lead times. Solo-T panels are constructed from a no-added urea formaldehyde dark MDF core. This provides dimensional stability, panels will not succumb to cracking, bending or buckling. Durable and easy to clean, Solo-T panels are UV clear coated for better fire performance and have a Class A fire rating in accordance with ASTM E84.

### Solo-T Advantages

- Natural wood veneered panels manufactured for ceiling applications
- Solo-T installs onto standard T-bar grid without the use of tools
- 100% accessibility
- Classic look of a linear wood ceiling with 2' x 2', 2' x 6' and 2' x 8' panels
- Solo-T has a Class A flame spread rating when tested in accordance with ASTM E 84
- Choose between beech, cherry, maple or ash finishes or painted to match other finishes on a custom basis
- Available with a dark no-added urea formaldehyde MDF core
- NRC of 0.90 with a 25mm fiberglass backing (not supplied by Decoustics)

### Solo-T Edge Detail



Project: Gateway School  
Architect: ABA Studio / Andrew Bartle Architects  
Location: New York, USA  
Product: Solo Planks



## Solo

Solo is an acoustical wood plank consisting of a medium density, no-added urea formaldehyde, fire rated MDF core, with a natural wood veneer laminated to the face and an acoustically transparent black fleece laminated to the back (which prevents insulation color from reading through). Solo planks are perfect for quick turnaround project as shop drawings and field dimensions are not required. Installers cut the 8' and 10' planks on site for rapid installation. Tongue and groove construction gives the ceiling or wall a monolithic appearance.

## Solo Dark Core

Decoustics' Solo is available with a dark medium density fire rated (MDF) core. When viewed at a distance the grooves seamlessly disappear making the ceiling appear as one.

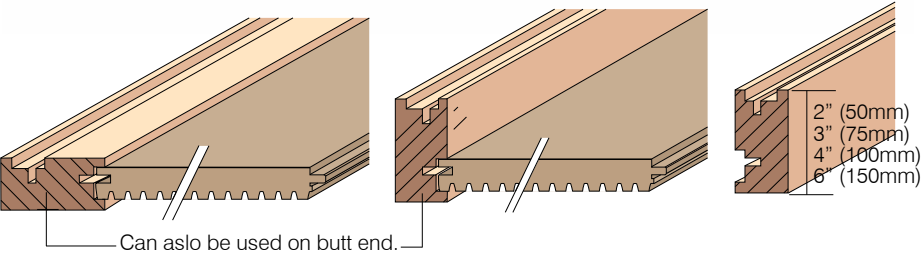
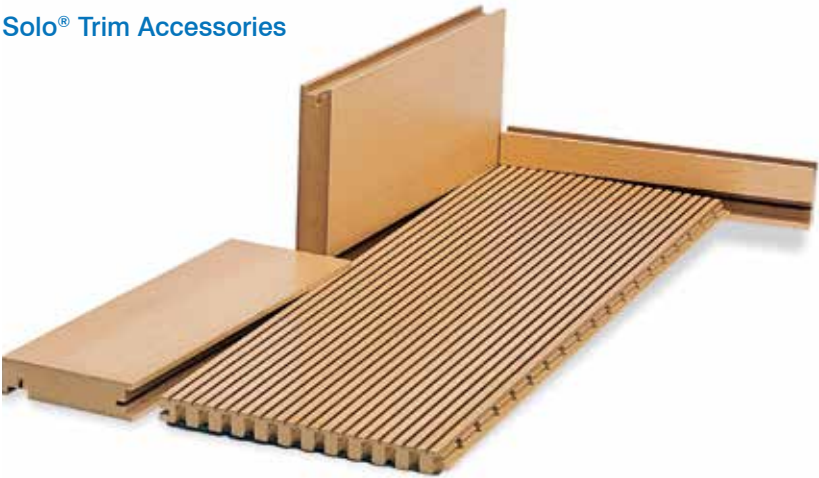


Solo (Regular Core)

Solo (Dark Core)

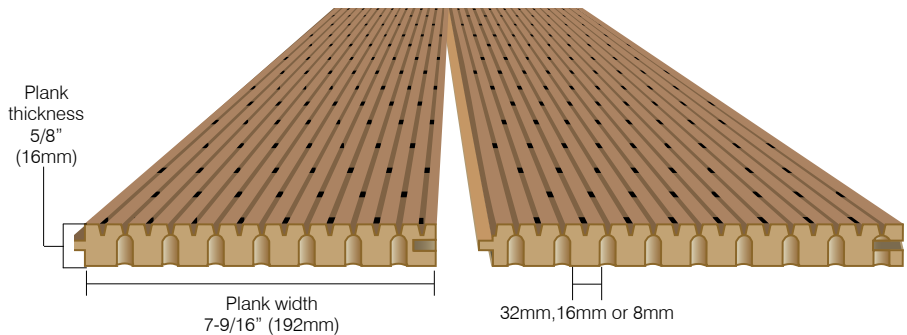


# Solo® Trim Accessories



## Solo Advantages

- Available for ceiling or wall applications
- Solo planks create a monolithic appearance utilizing a tongue and groove edge
- Increased acoustical absorption is achieved through the use of acoustical infill
- Easy installation and field modifications
- Manufactured from wood containing up to 100% pre-consumer recycled content
- Class A flame spread when tested in accordance to ASTM E84 standards
- Available with a dark MDF core



## Solo-8 (dark core)



## Solo-16



## Solo-32





## Linear Wood and Grille Ceilings

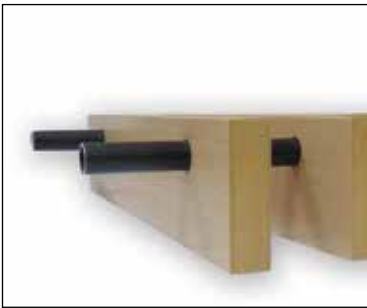
Linear Wood and Grille ceilings consist of solid no-added urea formaldehyde fire rated MDF core with a natural wood veneer laminated to all visible surfaces. All Decoustics' Linear Wood and Grille systems install onto heavy duty 15/16" T-bar grid.

Decoustics Linear Wood and Grille ceiling systems are available in a variety of sizes, lengths, configurations and veneer options. FSC® certified wood is available.

## Advantages

- Class A when tested in accordance with ASTM E84
- Specialized water-based, low VOC, fire retardent lacquer
- Certified low VOC, no-added formaldehyde - meets CA 01350, exposure scenario for school classrooms and private offices.
- Manufactured from MDF and available in Beech, Maple and Cherry wood veneers. Other veneers are available on request

Dowel Grille



## Dowel Grill

- Grille hangs below heavy duty 15/16" T-bar grid, the dowel clips snap onto the T-bar
- 100% accessible without the use of tools

STANDARD AVAILABLE LENGTHS	MODULE WIDTH	BLADE HEIGHT	BLADE THICKNESS	WOOD BLADES PER PANEL
47-1/4" (1200mm)	12-1/4" (311mm)	1-3/4" (44mm)	5/8" (16mm)	5
59-1/4" (1505mm)		2-1/4" (57mm)		
95-1/4" (2419mm)		3-1/4" (83mm)		
119-1/4" (3029mm)		5-1/4" (133mm)		

## Lay-in Grille

- Easy "lift and shift" installation into heavy duty 15/16" T-bar grid
- 100% accessible without the use of tools

STANDARD AVAILABLE LENGTHS	MODULE WIDTH	BLADE HEIGHT	BLADE THICKNESS	WOOD BLADES PER PANEL
47-1/4" (1200mm)	23-1/2" (597mm)	1-3/4" (44mm)	5/8" (16mm)	8
59-1/4" (1505mm)		2-1/4" (57mm)		
95-1/4" (2419mm)		3-1/4" (83mm)		
		5-1/4" (133mm)		

## Cross Piece Grille

- Cross Piece Grille panel secured to heavy duty 15/16" T-bar grid with mounting grids
- Simply remove screws for plenum access

STANDARD AVAILABLE LENGTHS	MODULE WIDTH	BLADE HEIGHT	BLADE THICKNESS	WOOD BLADES PER PANEL
47-1/4" (1200mm)	12-1/4" (311mm)	1-3/4" (44mm)	5/8" (16mm)	6
59-1/4" (1505mm)		2-1/4" (57mm)		
95-1/4" (2419mm)		3-1/4" (83mm)		
119-1/4" (3029mm)		5-1/4" (133mm)		





### Panelized Linear Wood

- Panelized linear wood is screwed to heavy duty 15/16" T-bar grid using Decoustics approved fasteners

STANDARD AVAILABLE LENGTHS	MODULE WIDTH	PLANK WIDTH	PLANK THICKNESS	WOOD PLANKS PER PANEL
47-1/4" (1200mm)	12-1/4" (311mm)	1-3/4" (44mm)	5/8" (16mm)	5
59-1/4" (1505mm)		2-1/4" (57mm)		4
95-1/4" (2419mm)		3-1/4" (83mm)		3
119-1/4" (3029mm)		5-1/4" (133mm)		2

### Lay-in Linear Wood

- Easy "lift and shift" installation into heavy duty 15/16" T-bar grid
- 100% accessible without the use of tools

STANDARD AVAILABLE LENGTHS	MODULE WIDTH	PLANK WIDTH	PLANK THICKNESS	WOOD PLANKS PER PANEL
47-1/4" (1200mm)	23-1/2"	1-3/4" (44mm)	5/8" (16mm)	10
59-1/4" (1505mm)		2-1/4" (57mm)		8
95-1/4" (2419mm)		3-1/4" (83mm)		6
		5-1/4" (133mm)		4

### Continuous Linear Wood

- Steel mounting clips screw into heavy duty 15/16" T-bar grid using Decoustics approved fasteners
- Optional black fiber strips are inserted between the panels\*

STANDARD AVAILABLE LENGTHS	PLANK WIDTH	PLANK THICKNESS
48" (1220mm)	1-3/4" (44mm)	5/8" (16mm)
60" (1525mm)	2-1/4" (57mm)	
96" (2440mm)	3-1/4" (83mm)	
120" (3050mm)	5-1/4" (133mm)	

Project: Gilgan Center at Sick Kids  
Architect: Diamond Schmitt Architects  
Location: Ontario, Canada  
Product: Quadrillo®



Ceilencio® ceiling suspension system-  
with Solo-M panels

### Suspension Systems

Decoustics has a wide range of suspension options available depending on project requirements.

#### Ceilencio®

Fully customized suspension system with 100% downward accessibility. Ceilencio is compatible with Decoustics' Quadrillo® and Solo-M wood products.

#### Suspended Accessible Reveal

Suspension system that creates the look of floating panels. The panels clip onto an installer-supplied frame or grid system.

#### Suspended Reveal

Suspension system that creates the look of floating panels with a 4" (100mm) reveal around each panel to facilitate installation.

#### Direct Mount

Direct Mount is a non-accessible ceiling system where panels are directly mounted to the substrate using a mechanical z-clip. The Direct Mount system allows for more room (height) when accessible areas above the ceiling are not required.

#### Direct Suspended

Non-accessible ceiling suspension system where panels are installed using a mechanical z-clip to fasten to the concealed metal suspension system.



## NRC Test Data

### QUADRILLO®

FINISH	PANEL THICKNESS	FREQUENCY (Hz)						NRC	SAA
		125	250	500	1000	2000	4000		
Panel	Type F5 Mounting								
QPP-19	Panel 1-1/8" (28mm), Core 3/4" (19mm)	0.05	0.16	0.59	1.01	0.94	0.69	0.70	0.68
QPP-25	Panel 1-3/8" (35mm), Core 1" (25mm)	0.07	0.28	0.85	1.07	0.95	0.74	0.80	0.79
QPP-50	Panel 2-3/8" (60mm), Core 2" (50mm)	0.29	0.82	1.18	1.06	1.00	0.73	1.00	1.03
Panel	Type E400 Mounting								
QPP-19	Panel 1-1/8" (28mm), Core 3/4" (19mm)	1.28	1.00	0.71	0.95	1.03	0.8	0.90	0.92
QPP-25	Panel 1-3/8" (35mm), Core 1" (25mm)	1.01	0.93	0.80	1.00	1.06	0.88	0.95	0.95
QPP-50	Panel 2-3/8" (60mm), Core 2" (50mm)	0.80	0.87	1.00	1.07	1.06	1.00	1.00	0.98

### FORI, SOLO-M, SOLO, and SOLO-T

FINISH	ACOUSTICAL INFILL	FREQUENCY (Hz)						NRC	SAA
		125	250	500	1000	2000	4000		
	Type A Mounting								
Solo 8	1" (25 mm)	0.21	0.48	1.12	1.02	0.69	0.58	0.85	0.84
Solo 8	2" (50 mm)	0.58	0.86	1.21	1.00	0.75	0.61	0.95	0.97
	Type E400 Mounting								
Solo 8	1" (25 mm)	0.99	0.98	0.88	1.00	0.80	0.71	0.90	0.89
Solo 8	2" (50 mm)	0.99	0.88	1.05	0.97	0.78	0.71	0.90	0.92

## Fire Classification

Quadrillo, Solo-M, Fori, Solo-T, Solo and Linear Wood and Grille carry a Class A flame spread as per ASTM E84.

## Climate Conditions

Decoustics wood products must be stored, installed and maintained in a stable ambient environment (humidity min. 35% - max. 55%, temperature not to exceed 27°C/80°F). Panels and planks must be allowed to acclimatize on site for 72 hours prior to installation.

## Specifications - Ceilings

When wood products are used for a ceiling application it is recommended to be specified in the specialty acoustics ceiling-Division 9. This will allow an experienced ceiling contractor to install Decoustics wood ceilings direct to substrate or with one of many different Decoustics engineered systems.

## Specifications - Walls

When Decoustics wood products are located in conjunction with millwork and non-acoustic panels, it is highly recommended that it be specified in the millwork section-Division 6. This will enable better design and installation control where veneer sourcing and finishing can be better coordinated.

DECOUSTICS®  
ECOPHON®  
GYPTONE®  
PERFORMA™



You can Be Certain™ that Decoustics will free you to bring your one-of-a-kind ceiling design to life. Its dramatic custom forms are engineered with exceptional precision to make even your most elaborate vision a possibility. And as part of CertainTeed Ceilings, we offer the expertise to help you ensure every space achieves ideal Environmental Acoustics™ for a healthier indoor environment. Our solutions promote well-being and productivity in any setting so every person can achieve their greatest potential. Through deep industry knowledge, continual innovation and sustainable efforts, we empower you to provide a sounder environment in any setting.

decoustics  
SAINT-GOBAIN

Decoustics  
61 Royal Group Crescent  
Woodbridge, Ontario L4H 1X9 Canada

[www.Decoustics.com](http://www.Decoustics.com)

Phone: 905-652-5200  
Toll Free: 800-387-3809

© 0715 Decoustics  
Code No. CTC-DC-0715-3000-3