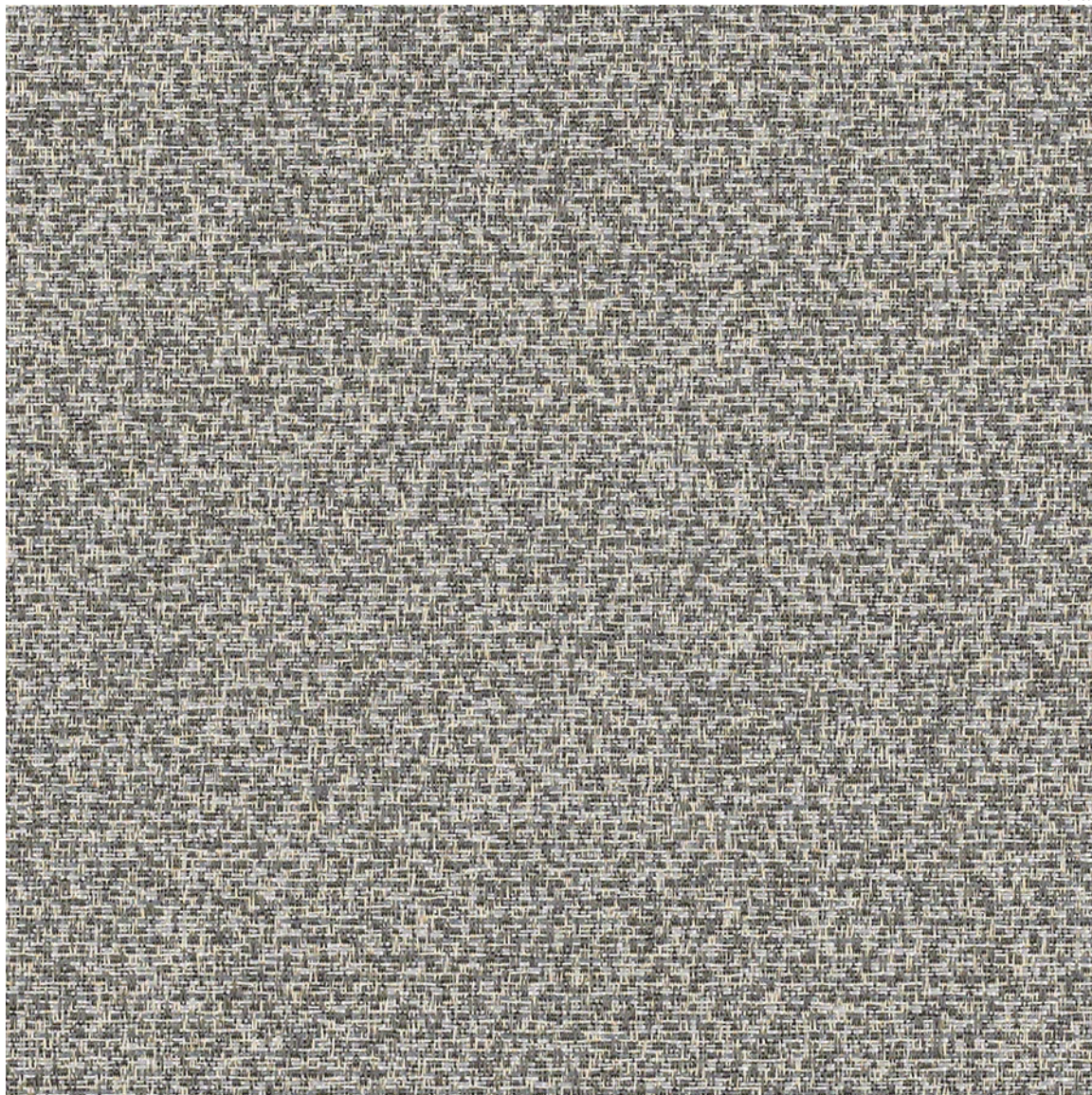


Tussah

TUS76 Incense

VERTICAL SURFACE FABRIC



© 2017 C.F. Stinson, LLC. All rights reserved.

Stinson®

Performance Summary

Cleaning and Maintenance

Cleaning Code: **(W-S)** For water-based stains use water-based cleaners. For oil-based stains use solvent-based cleaners. We recommend using a professional cleaning service.

For additional cleaning information visit cfstinson.com

For complete specifications visit cfstinson.com

Dye lots may vary slightly.

* This term and any corresponding data refer to the typical performance in the tests indicated and should not be construed to imply the behavior of this or any other material under actual fire conditions.

Specifications



| | |
|-----------|------------------------------------------------------------------------------|
| Content | 65% Post-Industrial Recycled Polyester, 35% Post-Consumer Recycled Polyester |
| Backing | Acrylic |
| Weight | 10.06 oz./lin. yd. ± 1.0 oz. |
| Width | 66 inches |
| Roll Size | 55 yards |

Performance Characteristics

| | |
|---------------------------------|------------------------------------------|
| Break Strength ASTM D-5034 | Warp: 195 lbs. min., Fill: 120 lbs. min. |
| Tear Strength ASTM D-2261 | Warp: 16 lbs. min., Fill: 18 lbs. min. |
| Colorfastness to Light AATCC-16 | 40 Hours, Class 4.0 |
| Crocking AATCC-8 | Dry: Class 4.0, Wet: Class 3.0 |

Flammability*

| | |
|-----------------------------------------------------|--------------|
| California 191-53 Technical Bulletin 117, Section E | Passed |
| UFAC | Class 1 |
| ASTM E-84 (Unadhered) | Class A or 1 |



This product is produced using 100% recycled fiber.



Tussah is an Underwriters Laboratory Recognized Component. Additional testing is not required on approved panel systems from participating manufacturers or remanufacturers.



Stinson®

C.F. Stinson, LLC
2849 Product Drive
Rochester Hills, MI 48309

P 800 841 6279
F 248 299 3884

cfstinson.com