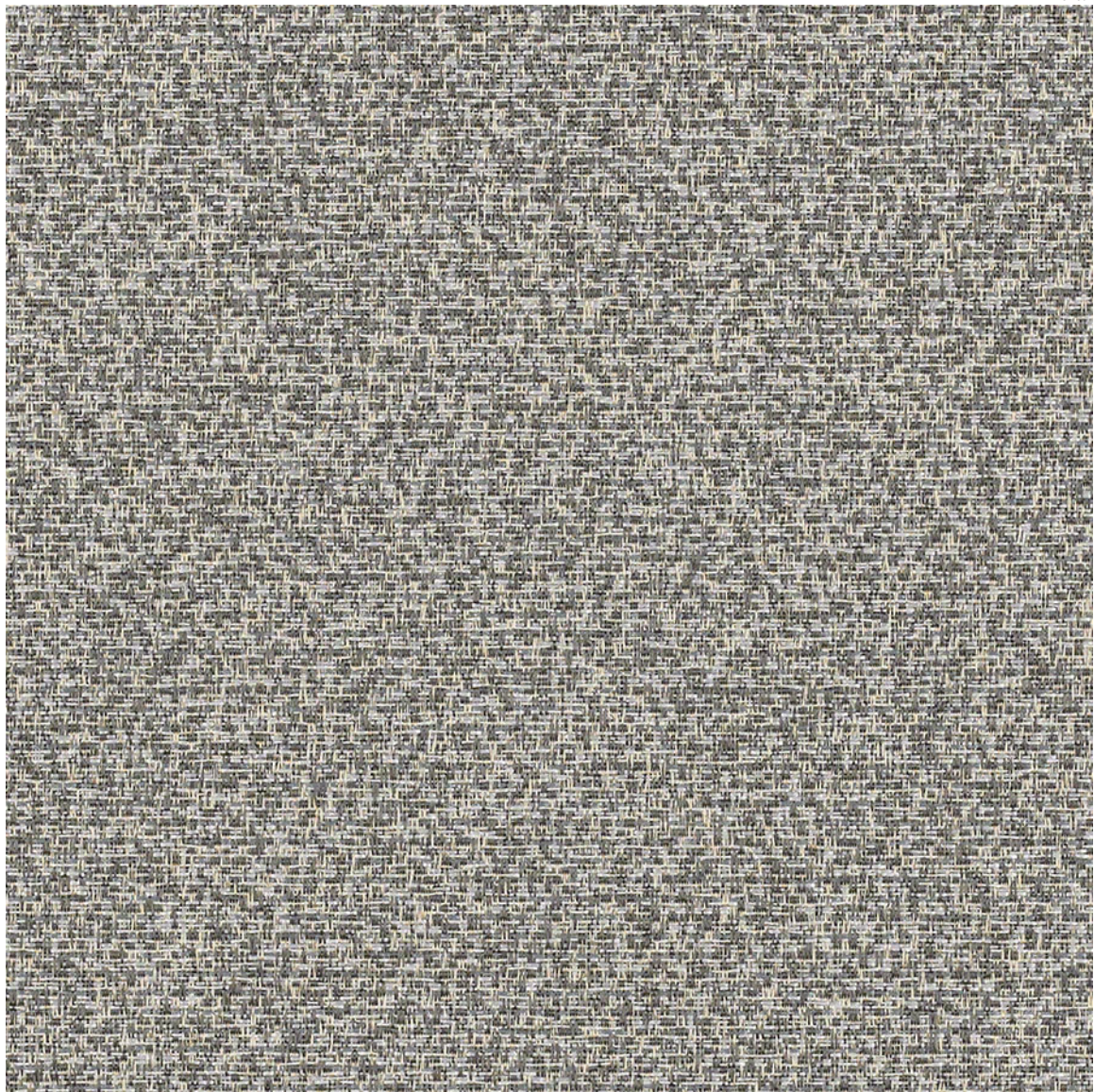


Tussah

TUS76 Incense

VERTICAL SURFACE FABRIC



© 2017 C.F. Stinson, LLC. All rights reserved.

Stinson[®]

Performance Summary

Cleaning and Maintenance

Cleaning Code: **(W-S)** For water-based stains use water-based cleaners. For oil-based stains use solvent-based cleaners. We recommend using a professional cleaning service.

For additional cleaning information visit cfstinson.com

For complete specifications visit cfstinson.com

Dye lots may vary slightly.

* This term and any corresponding data refer to the typical performance in the tests indicated and should not be construed to imply the behavior of this or any other material under actual fire conditions.

Specifications



Content	65% Post-Industrial Recycled Polyester, 35% Post-Consumer Recycled Polyester
Backing	Acrylic
Weight	10.06 oz./lin. yd. ± 1.0 oz.
Width	66 inches
Roll Size	55 yards

Performance Characteristics

Break Strength ASTM D-5034	Warp: 195 lbs. min., Fill: 120 lbs. min.
Tear Strength ASTM D-2261	Warp: 16 lbs. min., Fill: 18 lbs. min.
Colorfastness to Light AATCC-16	40 Hours, Class 4.0
Crocking AATCC-8	Dry: Class 4.0, Wet: Class 3.0

Flammability*

California 191-53 Technical Bulletin 117, Section E	Passed
UFAC	Class 1
ASTM E-84 (Unadhered)	Class A or 1



This product is produced using 100% recycled fiber.



Tussah is an Underwriters Laboratory Recognized Component. Additional testing is not required on approved panel systems from participating manufacturers or remanufacturers.



Stinson®

C.F. Stinson, LLC
2849 Product Drive
Rochester Hills, MI 48309

P 800 841 6279
F 248 299 3884

cfstinson.com