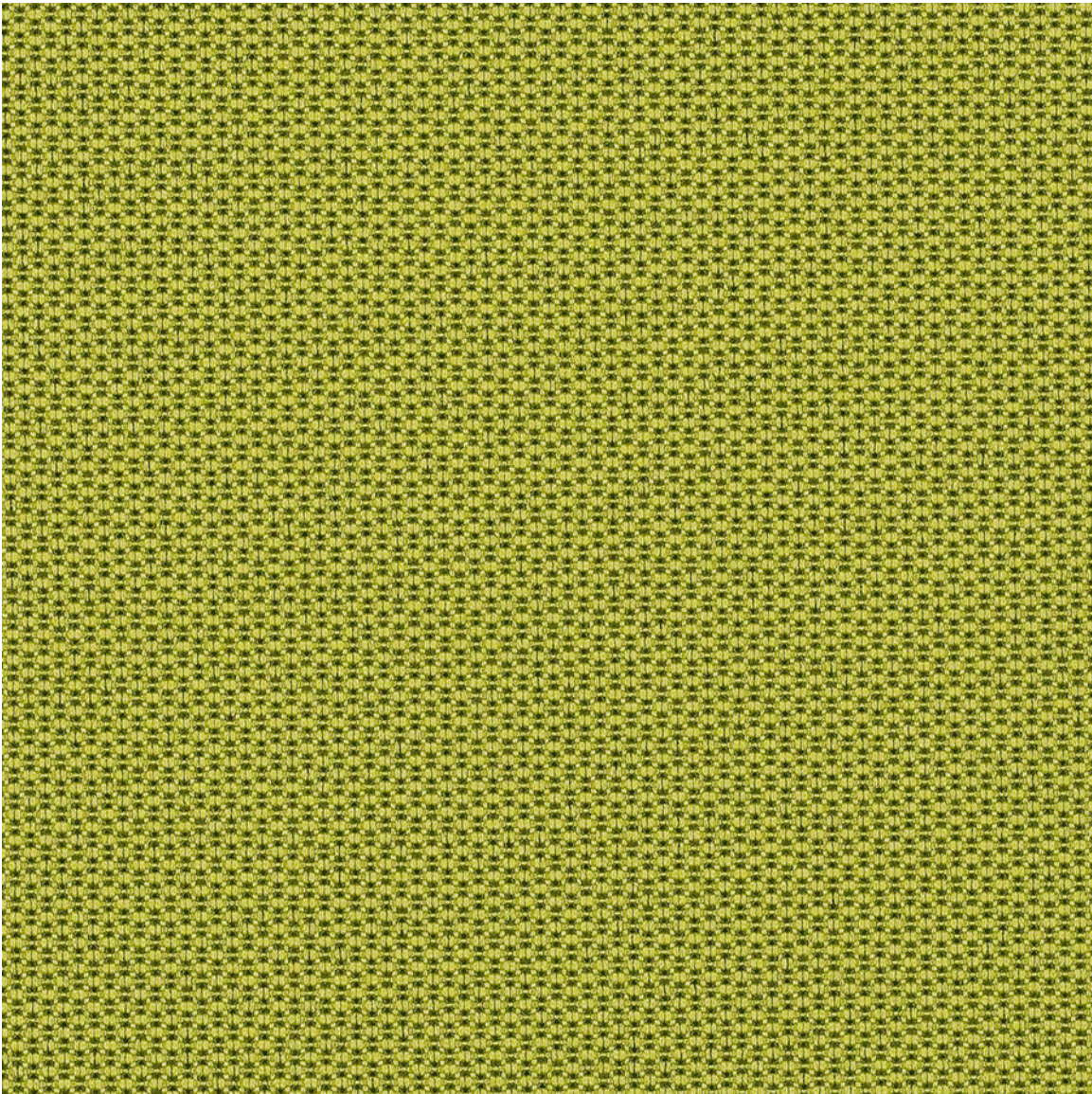


# Bryant Park

6561 Crocodile

PERFORMANCE FABRIC



© 2017 C.F. Stinson, LLC. All rights reserved.

## Performance Summary

- Enhanced soil + stain resistance
- Enhanced abrasion resistance

## Cleaning and Maintenance

Cleaning Code: **(W)** Clean with water-based foam or water-based cleaners only. Do not use solvents. We recommend using a professional cleaning service.

For additional cleaning information visit [cfstinson.com](http://cfstinson.com)

For complete specifications visit [cfstinson.com](http://cfstinson.com)

Dye lots may vary slightly.

\* This term and any corresponding data refer to the typical performance in the tests indicated and should not be construed to imply the behavior of this or any other material under actual fire conditions.

\*\* Multiple factors affect fabric durability and appearance retention, including end-user application and proper maintenance. Wyzenbeek results above 100,000 double rubs have not been shown to be an indicator of increased lifespan.

## Specifications



Content	100% Polyester
Finish	Enhanced Soil and Stain Protection
Backing	Latex
Weight	19.0 oz./lin. yd. ± 1.0 oz.
Width	54 inches
Roll Size	60 yards

## Performance Characteristics

Abrasion Resistance** ASTM D-4157	Exceeds 100,000 double rubs - heavy duty
Break Strength ASTM D-5034	Warp: 305 lbs. min., Fill: 291 lbs. min.
Tear Strength ASTM D-2261	Warp: 45.6 lbs. min., Fill: 29.6 lbs. min.
Seam Slippage ASTM D-4034	Warp: 90 lbs. min., Fill: 90 lbs. min.
Colorfastness to Light AATCC-16	40 Hours, Class 4.0
Crocking AATCC-8	Dry: Class 4.0, Wet: Class 4.0

## Flammability\*

California Technical Bulletin 117-2013 Section 1	Passed
UFAC	Class 1
NFPA 260	Class 1

May contribute to compliance with California Technical Bulletin 133 when used in conjunction with other suitable components.



# Stinson®

C.F. Stinson, LLC  
2849 Product Drive  
Rochester Hills, MI 48309

P 800 841 6279  
F 248 299 3884

[cfstinson.com](http://cfstinson.com)