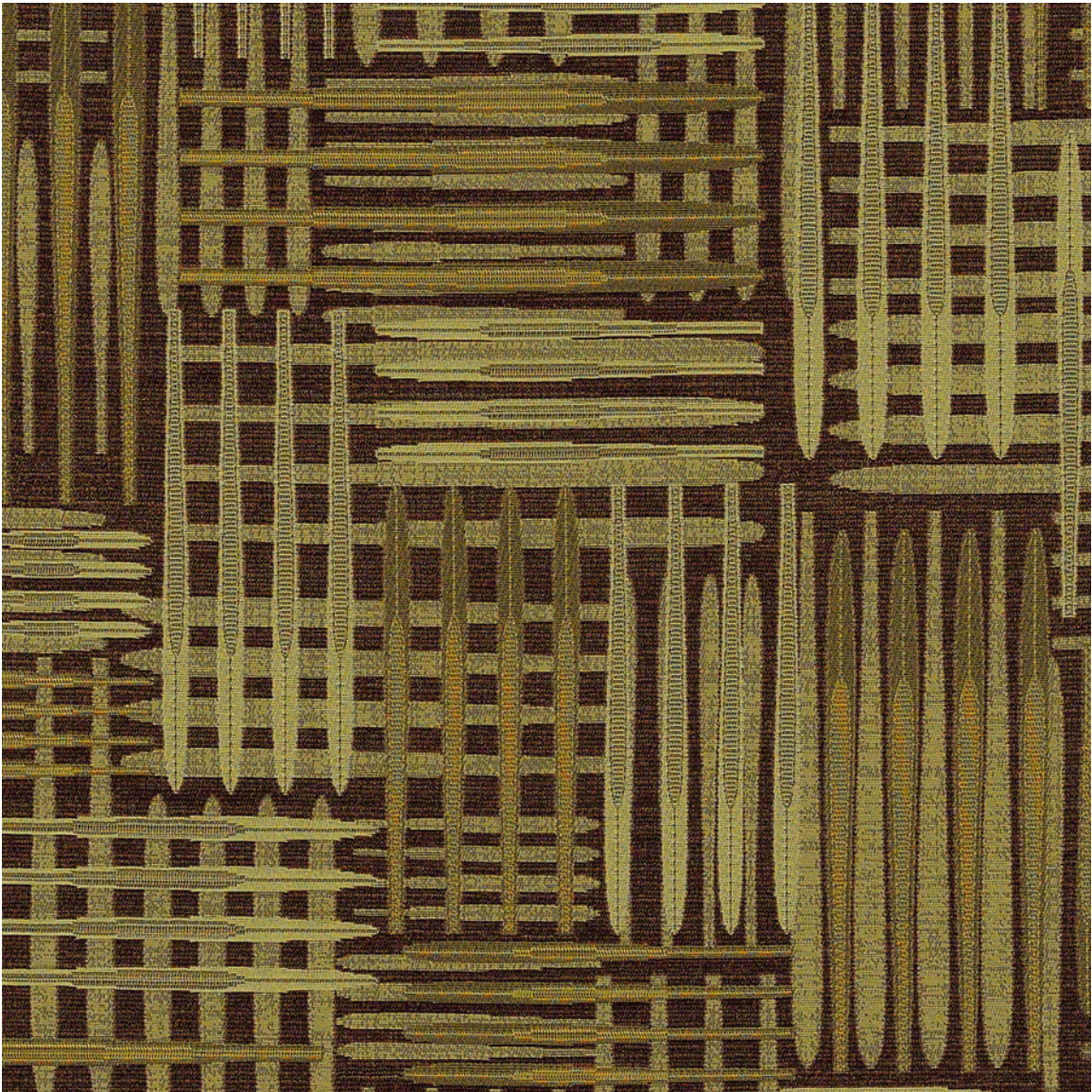


Motor City Collection

PERFORMANCE FABRIC

Cruisin'

6449 Moss



© 2017 C.F. Stinson, LLC. All rights reserved.

Cruisin'

Motor City Collection

PERFORMANCE FABRIC

Performance Summary

- Enhanced soil + stain resistance
- Enhanced abrasion resistance

Cleaning and Maintenance

Cleaning Code: **(S)** Clean with mild, water-free solvent-based cleaners only. Do not use water. We recommend using a professional cleaning service.

For additional cleaning information visit cfstinson.com

For complete specifications visit cfstinson.com

Dye lots may vary slightly.

* This term and any corresponding data refer to the typical performance in the tests indicated and should not be construed to imply the behavior of this or any other material under actual fire conditions.

** Multiple factors affect fabric durability and appearance retention, including end-user application and proper maintenance. Wyzenbeek results above 100,000 double rubs have not been shown to be an indicator of increased lifespan.

Specifications



Content	37% Nylon, 37% Polyester, 26% Cotton
Finish	Non-PFOA Stain Resistant
Backing	Acrylic
Weight	13.5 oz./lin. yd. ± 1.0 oz.
Width	54 inches
Repeat	Horizontal: 13.5 inches, Vertical: 17.25 inches, directional
Roll Size	55 yards

Performance Characteristics

Abrasion Resistance** ASTM D-4157	Exceeds 100,000 double rubs - heavy duty
Break Strength ASTM D-5034	Warp: 288 lbs. min., Fill: 233 lbs. min.
Seam Slippage ASTM D-4034	Warp: 139 lbs. min., Fill: 101.5 lbs. min.
Brush Pilling ASTM D-3511	Class 4.0 min.
Colorfastness to Light AATCC-16	40 Hours, Class 5.0
Crocking AATCC-8	Dry: Class 5.0, Wet: Class 4.5

Flammability*

California Technical Bulletin 117-2013 Section 1	Passed
UFAC	Class 1
NFPA 260	Class 1

May contribute to compliance with California Technical Bulletin 133 when used in conjunction with other suitable components.



Stinson®

C.F. Stinson, LLC
2849 Product Drive
Rochester Hills, MI 48309

P 800 841 6279
F 248 299 3884

cfstinson.com