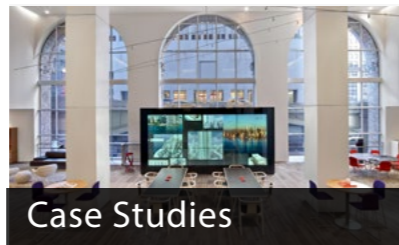




Raised Floor Experts



The System



Case Studies



Business Challenges



Solving Business Challenges with Raised Access Floors

In a fast-paced world of change, workspaces continuously evolve. Organizations want flexible spaces that accommodate diverse workstyle and workplace needs. At Haworth, we have both the knowledge and expertise to help make your real estate work harder for you, because we experience many of the same business challenges ourselves. We are poised to partner with you, understand your business drivers, and help you implement “ your workplace objectives.



Flexibility

Haworth raised access flooring provides the flexibility you need to transform your space, minimize costs, and get back to business. Access to air, power, voice, and data under the floor lets you reconfigure your layout with minimal downtime as your workspace needs change.



Energy Savings

Energy use has a major impact on building operations costs and the environment. Raised access floors help you reduce energy costs by pushing air up from the floor rather than down from the ceiling. HVAC systems are more efficient because the air is targeted where needed—in the space people work.



Sustainability / LEED

Underfloor air is one of the single most effective strategies reaping savings in initial building costs and continuing operational costs, and for gaining LEED points. Our floors have been installed in some of the largest and highest scoring LEED-certified buildings in the country.



Minimizing Schedule

With underfloor electrical access you can shorten your construction schedule by allowing trade workers to work simultaneously. Power and data access under the floor makes a space flexible for the long term, so you can always reconfigure your layout with minimal downtime.



Design Freedom

With raised access floors, you create an open space without the need for power poles. Changing the design of existing spaces is not limited by the location of power and data. Floor height can be varied to accommodate various finishes or functions within a space. Haworth also offers a wide range of finish options and endless opportunities for customization.



Renovation

Our flooring is ideal for challenging renovation projects because it's easy to level uneven floors and create a truly flexible workplace. Moves, adds and changes are simple by detaching modular connectors, moving the electrical box and reconnecting it where it is needed.



Worker Comfort

Worker comfort is one of the top workplace issues challenging organizations. With raised access flooring, clean and newly conditioned air is introduced through the floor directly into the occupied zone. The air with the impurities naturally rises to be removed from the space. Air diffusers can be adjusted by occupants to give them greater temperature control, allowing them to focus on their work.



Haworth: The Raised Floor Experts

A family-owned, global company in business over 60 years, Haworth added raised access floors to the offering in 2003 as a response to customers' need for additional workspace flexibility.



The TecCrete Story

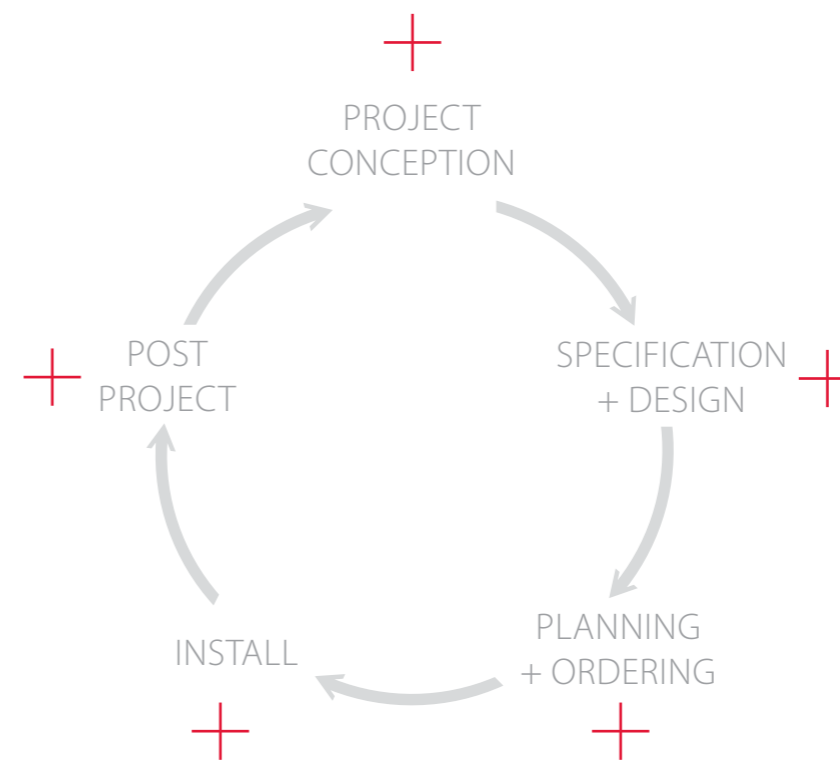
TecCrete access flooring has provided the platform for flexible, efficient and beautiful spaces for more than 30 years. It's the leading choice for architects and developers who prefer a top-quality access flooring system with best-in-class features. Since 1986, we have been helping customers distribute air, power, voice, and data within a variety of applications such as offices, data centers, museums, libraries, and casinos.



Partnership

At Haworth, research and design drive our deep understanding of workplace needs. We'd like to introduce our team, and help you understand how we, along with our network of flooring contractors will provide value throughout your entire project, from conception and design to installation and beyond. Using our products, services, and knowledge, Haworth's mission is to provide each of our customers a tailored interior that enhances their business, stirs their spirit, and sustains the planet. With \$1.41 billion in sales in 2013, you can count on Haworth's financial strength and commitment to you well into the future.

Click on the red Icons to learn more



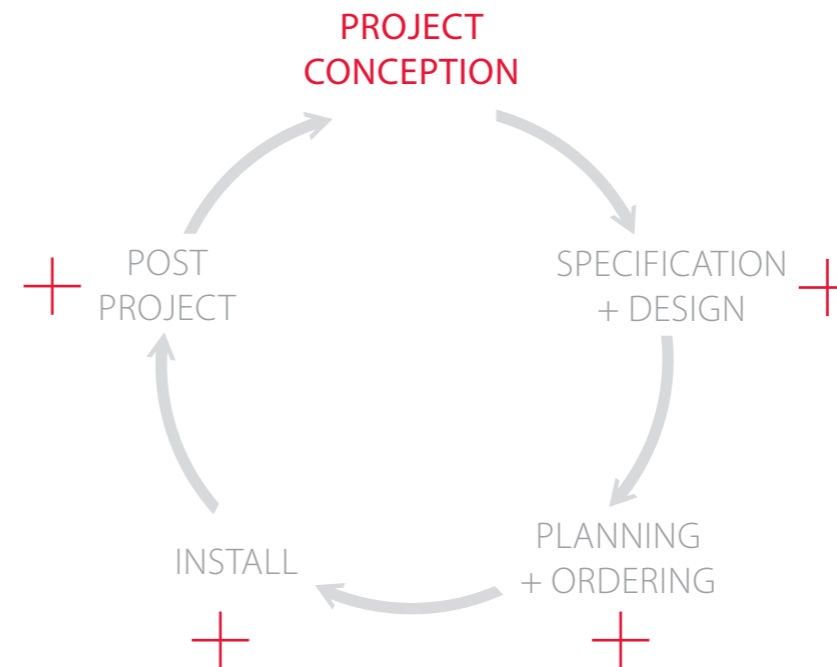
Partnership

At Haworth, research and design drive our deep understanding of workplace needs. We'd like to introduce our team, and help you understand how we, along with our network of flooring contractors will provide value throughout your entire project, from conception and design to installation and beyond. Using our products, services, and knowledge, Haworth's mission is to provide each of our customers a tailored interior that enhances their business, stirs their spirit, and sustains the planet. With \$1.41 billion in sales in 2013, you can count on Haworth's financial strength and commitment to you well into the future.

Click on the red Icons to learn more



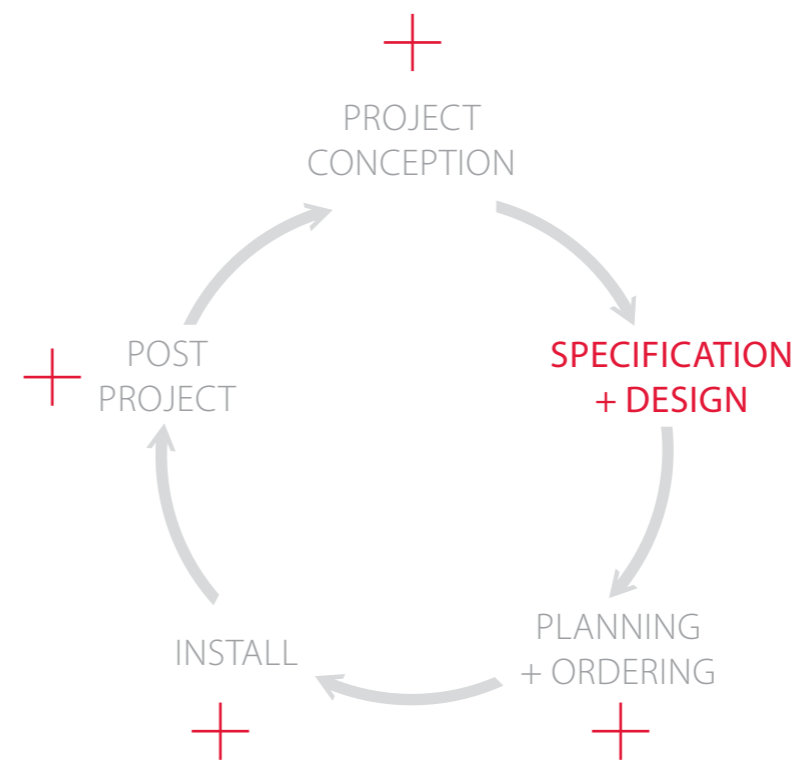
- Trusted advisor - Information on building an efficient space, Modular Rower, UFAD
- Education - CEUs, White Papers, Articles
- Tours - Client Installation



Partnership

At Haworth, research and design drive our deep understanding of workplace needs. We'd like to introduce our team, and help you understand how we, along with our network of flooring contractors will provide value throughout your entire project, from conception and design to installation and beyond. Using our products, services, and knowledge, Haworth's mission is to provide each of our customers a tailored interior that enhances their business, stirs their spirit, and sustains the planet. With \$1.41 billion in sales in 2013, you can count on Haworth's financial strength and commitment to you well into the future.

Click on the red icons to learn more

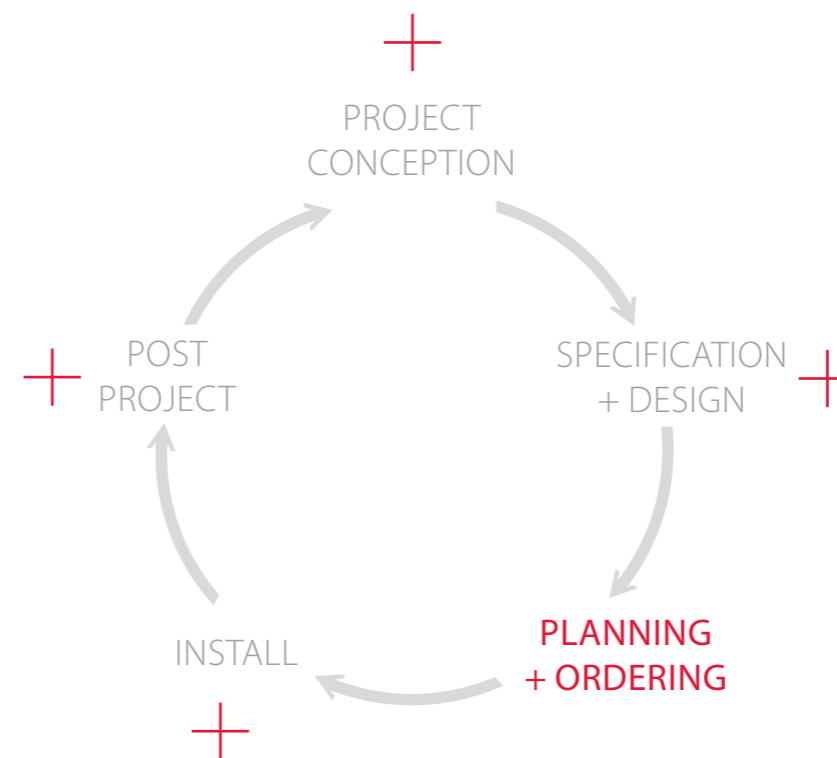


- Coordinate with architects and project managers on projects
- Design and space planning, product application guidance
- Completion + submittal of specification response
- Proof - Test requirements
- Revit Modeling
- CAD application drawings
- Downloadable + editable specs online
- Spec review for possible collisions in building design

Partnership

At Haworth, research and design drive our deep understanding of workplace needs. We'd like to introduce our team, and help you understand how we, along with our network of flooring contractors will provide value throughout your entire project, from conception and design to installation and beyond. Using our products, services, and knowledge, Haworth's mission is to provide each of our customers a tailored interior that enhances their business, stirs their spirit, and sustains the planet. With \$1.41 billion in sales in 2013, you can count on Haworth's financial strength and commitment to you well into the future.

Click on the red Icons to learn more

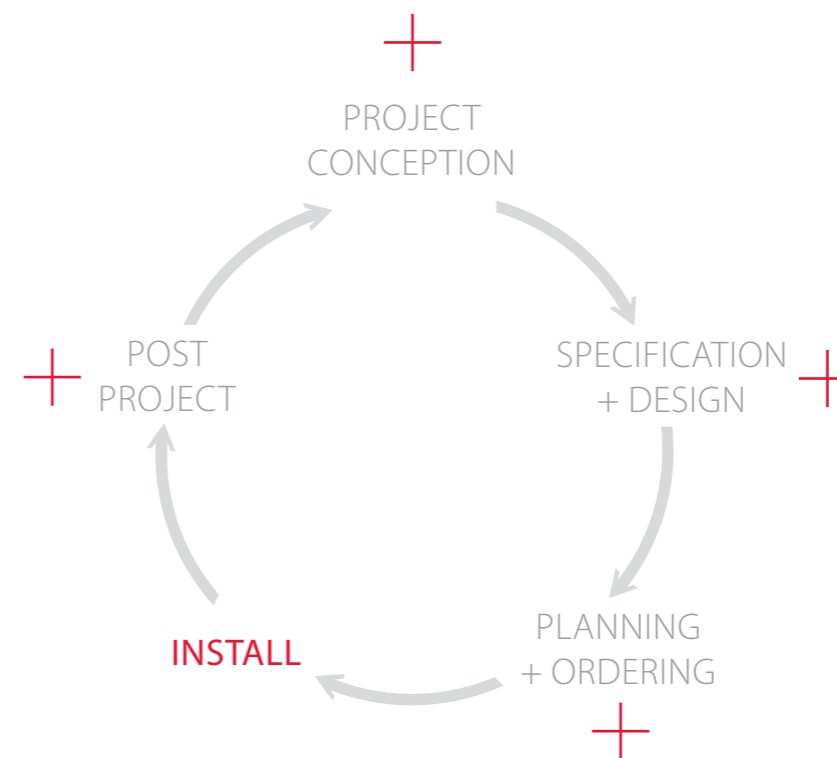


- Order management
- Project management
- Quotation + Ordering assistance
- Preparation of installation drawings
- Order preparation prior to order entry to ensure correct quantity and specifications
- Check acknowledgements against purchase orders to ensure accuracy
- Coordinate proper tagging to ensure a quick delivery and installation

Partnership

At Haworth, research and design drive our deep understanding of workplace needs. We'd like to introduce our team, and help you understand how we, along with our network of flooring contractors will provide value throughout your entire project, from conception and design to installation and beyond. Using our products, services, and knowledge, Haworth's mission is to provide each of our customers a tailored interior that enhances their business, stirs their spirit, and sustains the planet. With \$1.41 billion in sales in 2013, you can count on Haworth's financial strength and commitment to you well into the future.

Click on the red icons to learn more



- Coordinate with architects and project managers
- Verify all order changes in writing with project manager
- Coordinate delivery and field dimension verification
- Setup, Coordinate, and manage installation

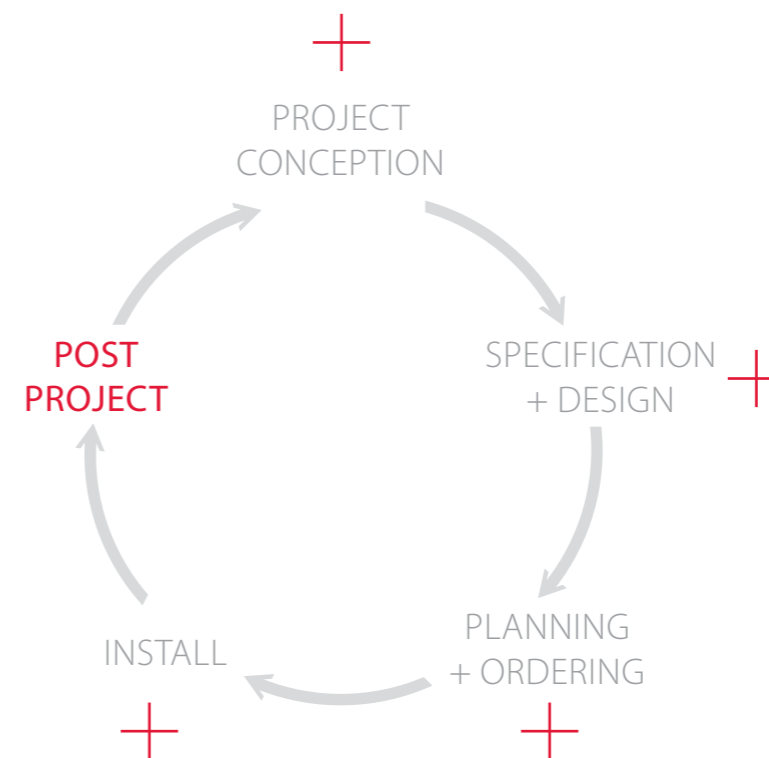
Partnership

At Haworth, research and design drive our deep understanding of workplace needs. We'd like to introduce our team, and help you understand how we, along with our network of flooring contractors will provide value throughout your entire project, from conception and design to installation and beyond. Using our products, services, and knowledge, Haworth's mission is to provide each of our customers a tailored interior that enhances their business, stirs their spirit, and sustains the planet. With \$1.41 billion in sales in 2013, you can count on Haworth's financial strength and commitment to you well into the future.

Click on the red Icons to learn more



- Perform walk-through, punch list completion + expedite replacement orders
- Storage facility
- Disposal + Disposition
- Asset Management



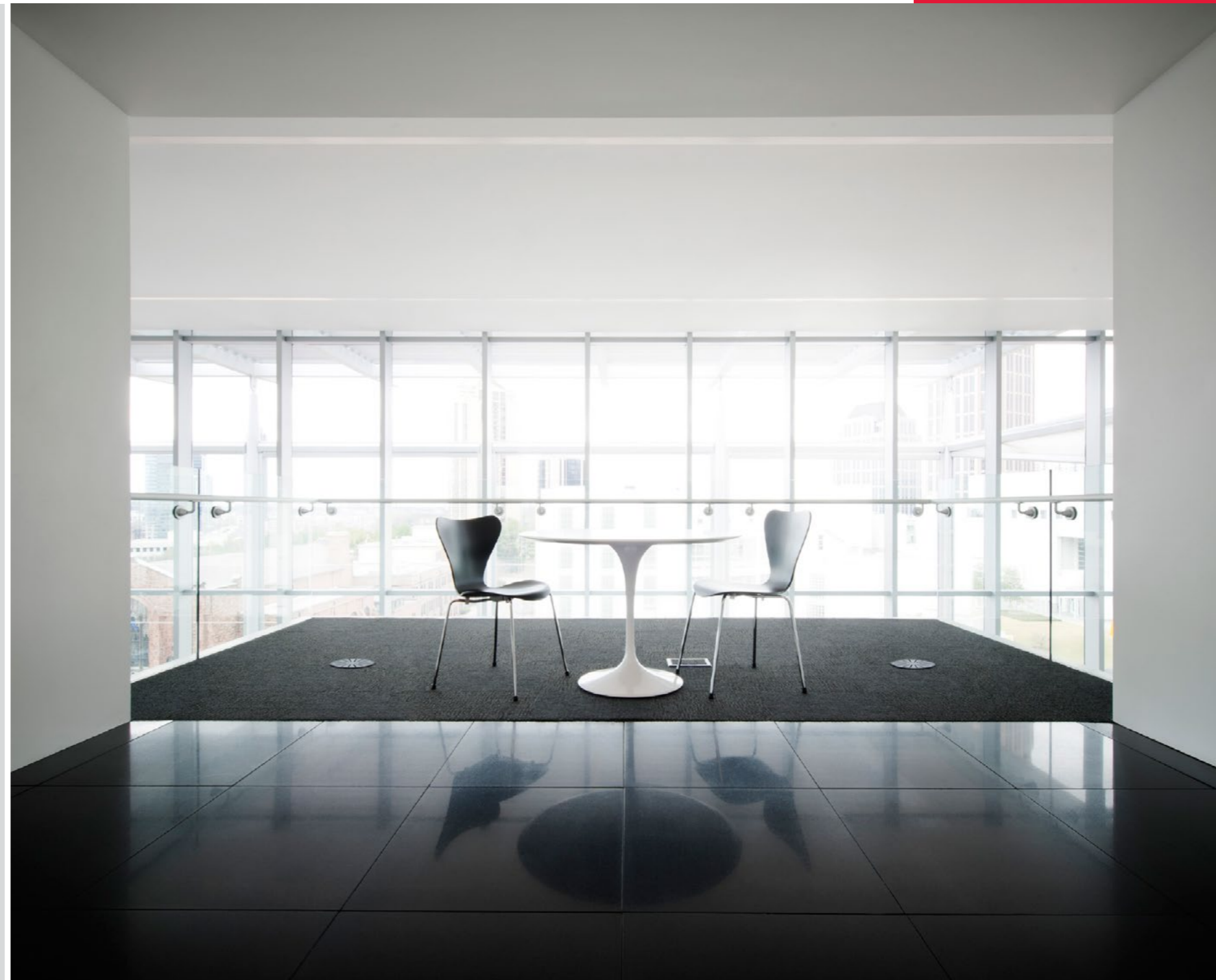
Knowledge

No company is more suited than Haworth to adapt to and solve for changing office needs. As progressing technologies change the landscape of how, where, and when power and data is harnessed and delivered, they also impact the ways and locations in which people perform their work. Through relentless research and ideation, and innovative design and engineering, Haworth is a leader in the development and production of office furniture and Organic Workspaces® - including raised access flooring, moveable walls, systems furniture, seating, storage, wood casegoods, and technology solutions. Haworth is also a leader in sustainable workplace environments, meaning the products we place in your setting can lead to savings through reuse, recycling, and reduced energy consumption.



The System

Haworth raised access flooring provides the best walk in the industry: You feel just as stable as if you were walking on subflooring. It meets all recommend CISCA load tests, loads required on job sites, and has the best warranty in the industry.



OVERVIEW

ELECTRICAL

HVAC

FINISHES

TECHNICAL

DELIVERY
+ PROMISE

Product Overview

Its unique concrete-and-steel composite panel makes our raised access flooring amazingly quiet and solid underfoot, effectively reducing noise from HVAC equipment, foot traffic, and other sound sources.



OVERVIEW

ELECTRICAL

HVAC

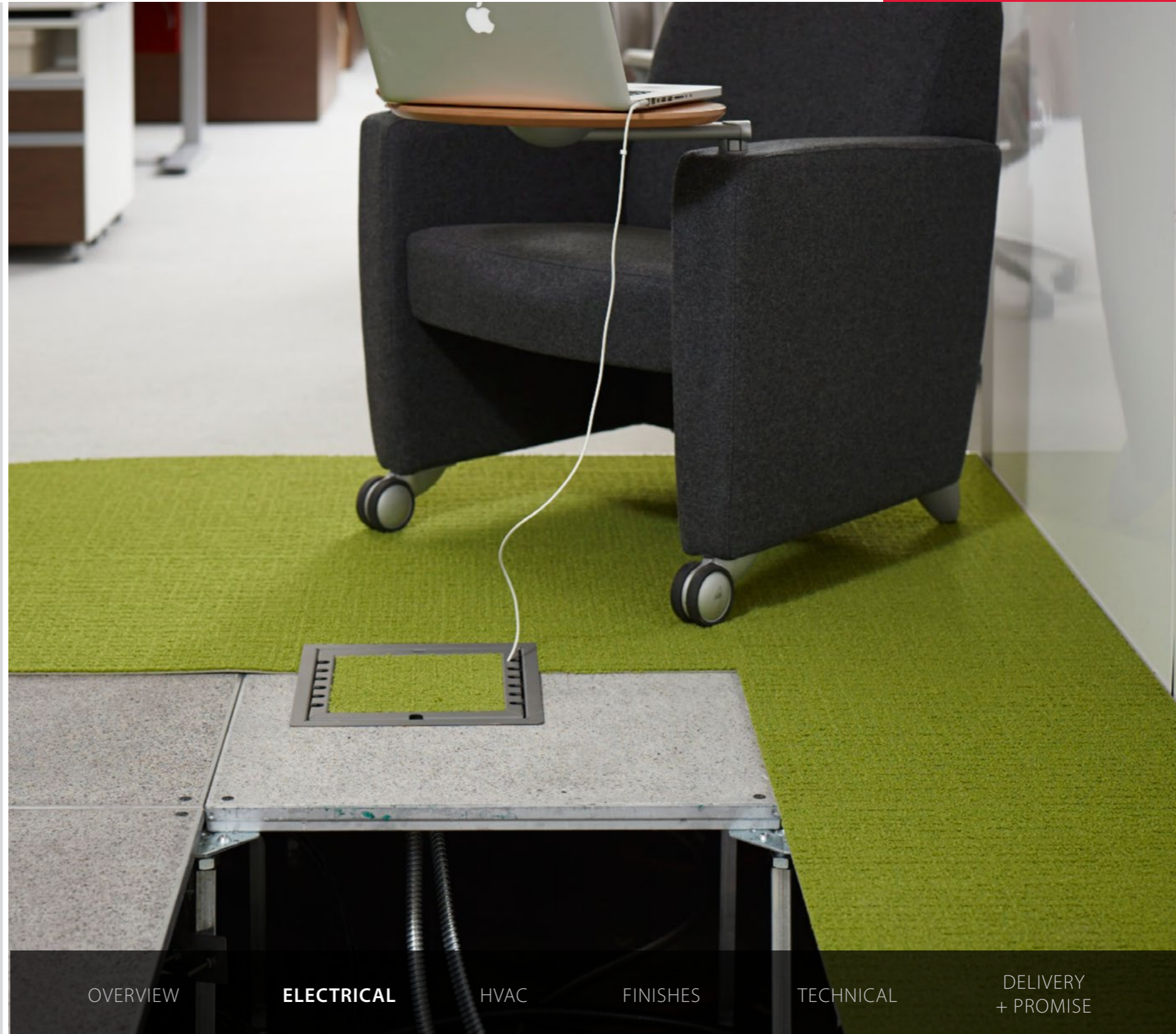
FINISHES

TECHNICAL

DELIVERY
+ PROMISE

Modular Electrical Economics Benefits

When utilities are located under the floor, you can reduce electrical installation labor hours by 30-40%. The result is shorter construction schedules and reduced costs any time you reconfigure. Make changes quickly with plug-and-play functionality. Plan for zone distribution for maximum density.



OVERVIEW

ELECTRICAL

HVAC

FINISHES

TECHNICAL

DELIVERY
+ PROMISE

Underfloor Air Benefits

Fans use 10-20% less operational energy by working with the natural flow of air, which travels through less ductwork and is delivered at 62 to 65 degrees F. The air is supplied under the floor at a pressure 20 times lower than overhead air, which requires smaller fans and, therefore, less energy. Pollutants rise to a displacement zone, creating better air quality. And, most ductwork is eliminated.



OVERVIEW

ELECTRICAL

HVAC

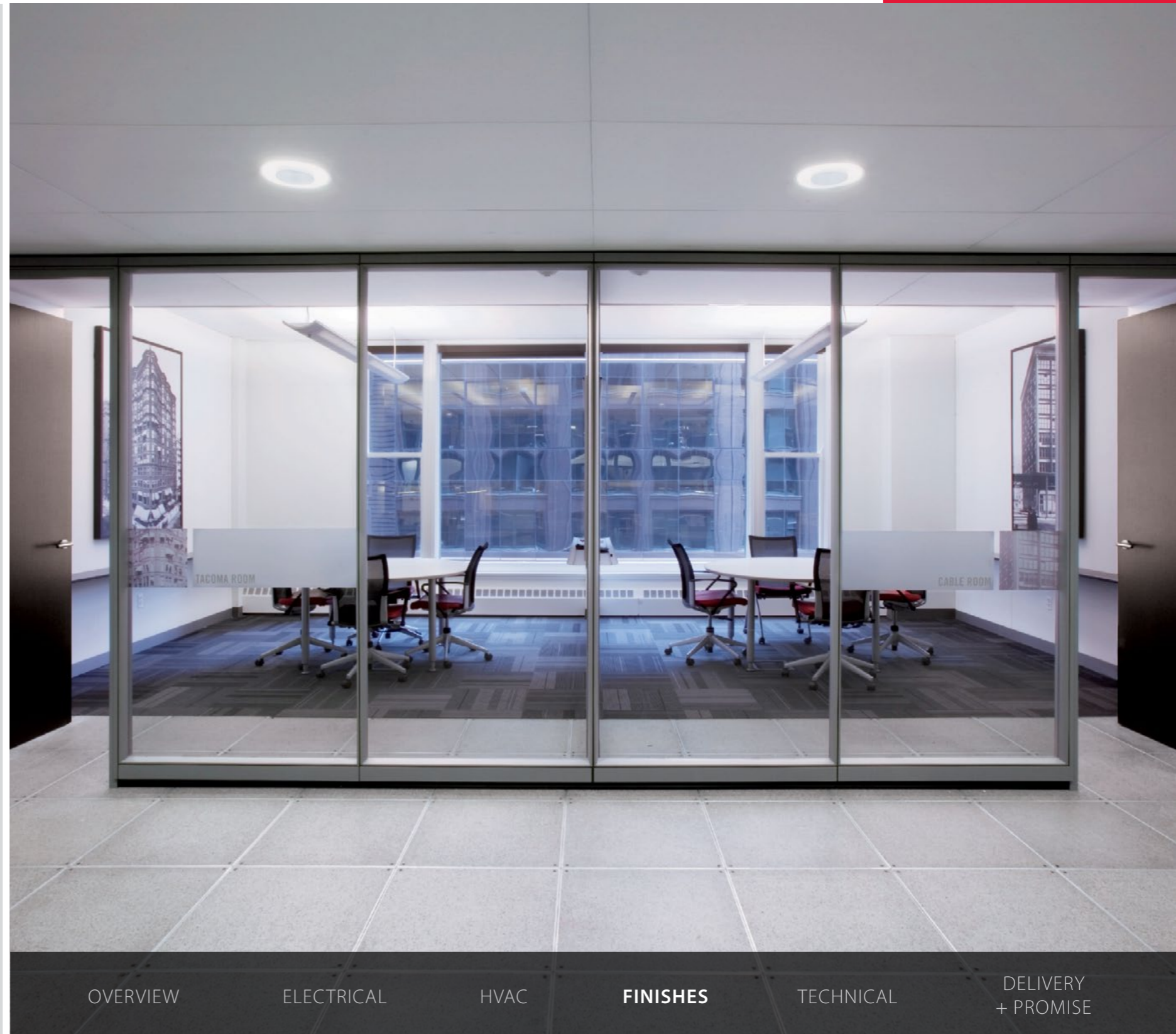
FINISHES

TECHNICAL

DELIVERY
+ PROMISE

Finishes

Only our TecCrete floor product can be used bare with field applied conductive coatings. Durable bare finish eliminates the hassle and expense resulting from cracking, chipping, or delamination of high pressure laminate. With architectural finishes available, it presents a unique look that lasts. Covered panels are available for data centers.



OVERVIEW

ELECTRICAL

HVAC

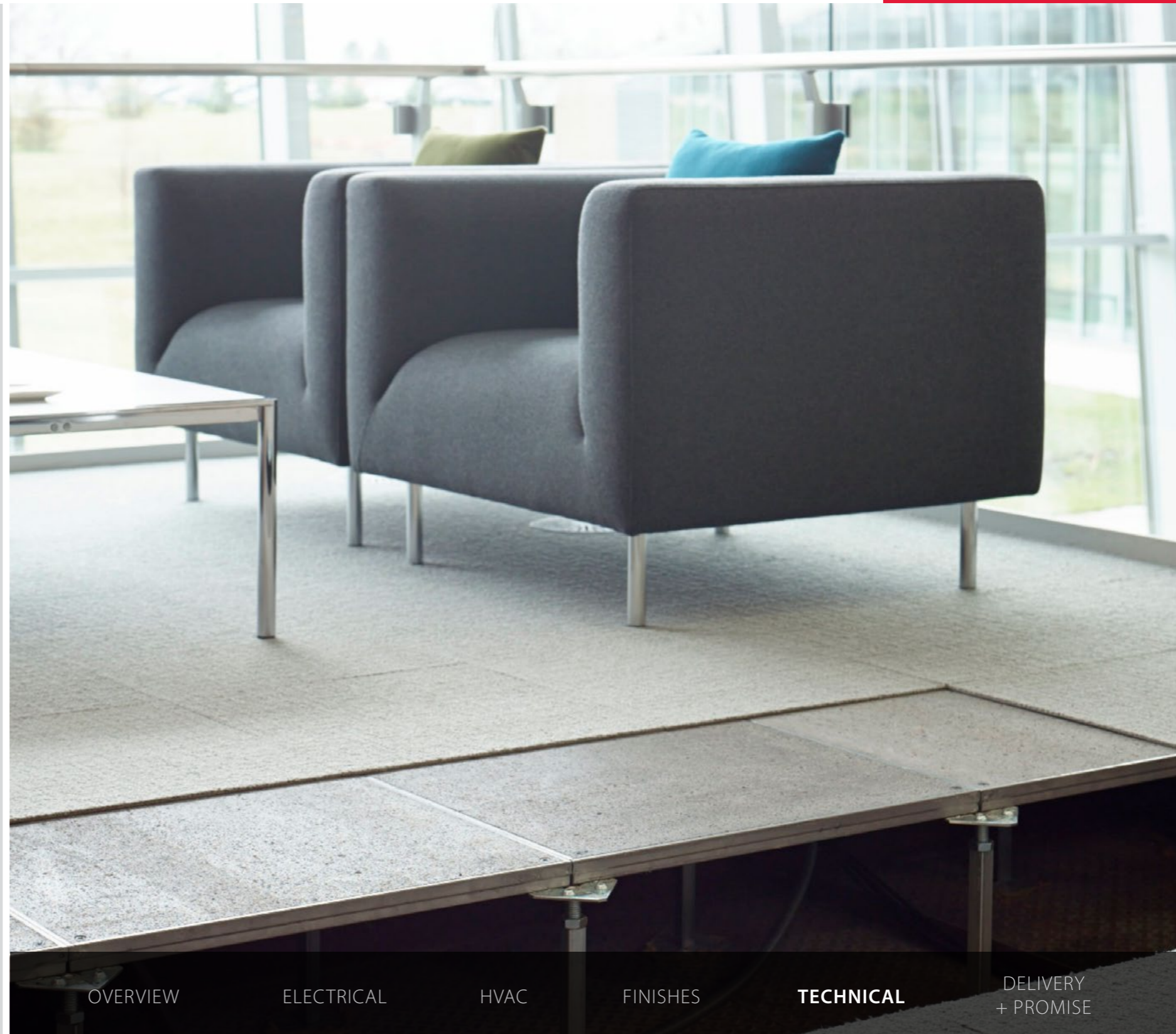
FINISHES

TECHNICAL

DELIVERY
+ PROMISE

Technical Details

For more details, and to find out what tools we offer architects and their customers, we have technical information to share with you.



[Download Technical Information >](#)



[OVERVIEW](#)

[ELECTRICAL](#)

[HVAC](#)

[FINISHES](#)

TECHNICAL

[DELIVERY
+ PROMISE](#)

Delivery + Promise

TecCrete Raised Access Floors are manufactured in our 150,000 square foot facility located in Grand Rapids, MI.

In addition to our facility being ISO Certified and zero waste to landfill, we are proud to state that our flooring products are compliant with FAR Subpart 25.2-Buy American Act-Construction Materials.

Our quality products are manufactured and delivered in accordance to a 5-7 week lead time, in addition to an outstanding product warranty - 5 years on TecCrete structure and 3 years against delamination of standard finishes.



OVERVIEW

ELECTRICAL

HVAC

FINISHES

TECHNICAL

**DELIVERY
+ PROMISE**

Applications

Our raised access floors are made with customer needs in mind. Their flexibility, efficiency, and aesthetics make them versatile for both new construction and renovation in many environments.



GENERAL OFFICE

LIBRARIES

DATA CENTERS

RENOVATIONS
+ LOW-PROFILE

HIGHER
EDUCATION

CASINOS

General Office + Underfloor Air

Office environments require frequent reconfigurations to accommodate the expanding and contracting workforce. Haworth raised access floors can help save labor expenses, reduce material costs, cut down on waste, and optimize real estate.



GENERAL OFFICE

LIBRARIES

DATA CENTERS

RENOVATIONS
+ LOW-PROFILE

HIGHER
EDUCATION

CASINOS

Libraries

In quiet spaces, such as libraries, Haworth floors provide a solid foundation, along with the added benefits of underfloor air delivery, reduced energy consumption, and improved indoor air quality.



GENERAL OFFICE

LIBRARIES

DATA CENTERS

RENOVATIONS
+ LOW-PROFILE

HIGHER
EDUCATION

CASINOS

Data Centers

Haworth's data center flooring solution is engineered for reliability and safety, utilizing our industry-leading lamination process, which is warranted against delamination.



GENERAL OFFICE

LIBRARIES

DATA CENTERS

RENOVATIONS
+ LOW-PROFILE

HIGHER
EDUCATION

CASINOS

Renovations + Low Profile

Re-level an old floor with our low-profile flooring application. Modular electrical systems below the floor allow for quick and easy changes to technology, building flexibility into the life of the building.



GENERAL OFFICE

LIBRARIES

DATA CENTERS

**RENOVATIONS
+ LOW-PROFILE**

HIGHER
EDUCATION

CASINOS

Higher Education

Creating a tiered seating platform is easy with raised access flooring. As organizational needs change, it's easy to repurpose the space without major construction.



GENERAL OFFICE

LIBRARIES

DATA CENTERS

RENOVATIONS
+ LOW-PROFILE

**HIGHER
EDUCATION**

CASINOS

Casinos

Create a comfortable gaming environment with superior indoor air quality and the flexibility for space changes. Refresh technology and infrastructure quickly and cost-effectively.



GENERAL OFFICE

LIBRARIES

DATA CENTERS

RENOVATIONS
+ LOW-PROFILE

HIGHER
EDUCATION

CASINOS

Case Studies

Made entirely in the U.S., Haworth access floors have been installed in some of the largest project sites in North America and many of the highest scoring LEED-certified buildings in the country, including our own.

We understand the need for, and importance of, flexible and responsive spaces. We also understand that time and cost savings are imperative when reconfigurations or changes are needed within a space.

We invite you to view how quick, simple, and cost effective change can be with raised access floors.

[View Flexibility in Motion Video](#)

[Tablet >](#)

[Desktop >](#)



Compuware

Detroit, MI

Walk through Compuware Corporation's 15-story, 1.1 million square foot global headquarters in the heart of downtown Detroit and your first observation will likely be how illumination permeates the immense space, conveying a sense of clarity, strength, and confidence.

This system provides \$127,000 per year in energy savings when compared to a conventional variable volume, overhead air-distribution system with 55°F (13°C) supply air.

[Full Case Study >](#)



Panduit Headquarters

Tinley Park, IL

Technology leader Panduit, known for its Unified Physical InfrastructureSM integrated, environmentally friendly communication, power and technology infrastructure solutions, had outgrown its previous corporate headquarters. Deciding to build a new facility, the company wanted to combine its intelligent building approach and environmental policy into a blueprint for a building of the future. Today, their innovative brand is beautifully exemplified by a LEED® Gold-certified new global headquarters outside Chicago in Tinley Park, IL.

[Full Case Study >](#)



CIRS Center for Interactive Research on Sustainability

University of British Columbia - Vancouver, BC

Calling the new Centre for Interactive Research on Sustainability (CIRS) the “greenest building in North America” isn’t giving it enough credit. This 18,372 square foot building is designed to not only have as little impact as possible, but to actually improve the surrounding environment. The goal was to help make inhabitants healthier, happier, and more productive as they help shape public policy through new ideas. air-distribution system with 55°F (13°C) supply air.

[Full Case Study >](#)



Thornburg Mortgage Headquarters

Santa Fe, NM

Thornburg Investment Management sought to create a healthy, sustainable “building of excellence” that would inspire employees to do great work while efficiently adapting to frequent moves within the company. The resulting environment goes above and beyond, even earning a LEED® Innovation in Design Credit for exceptional performance.

[Full Case Study >](#)



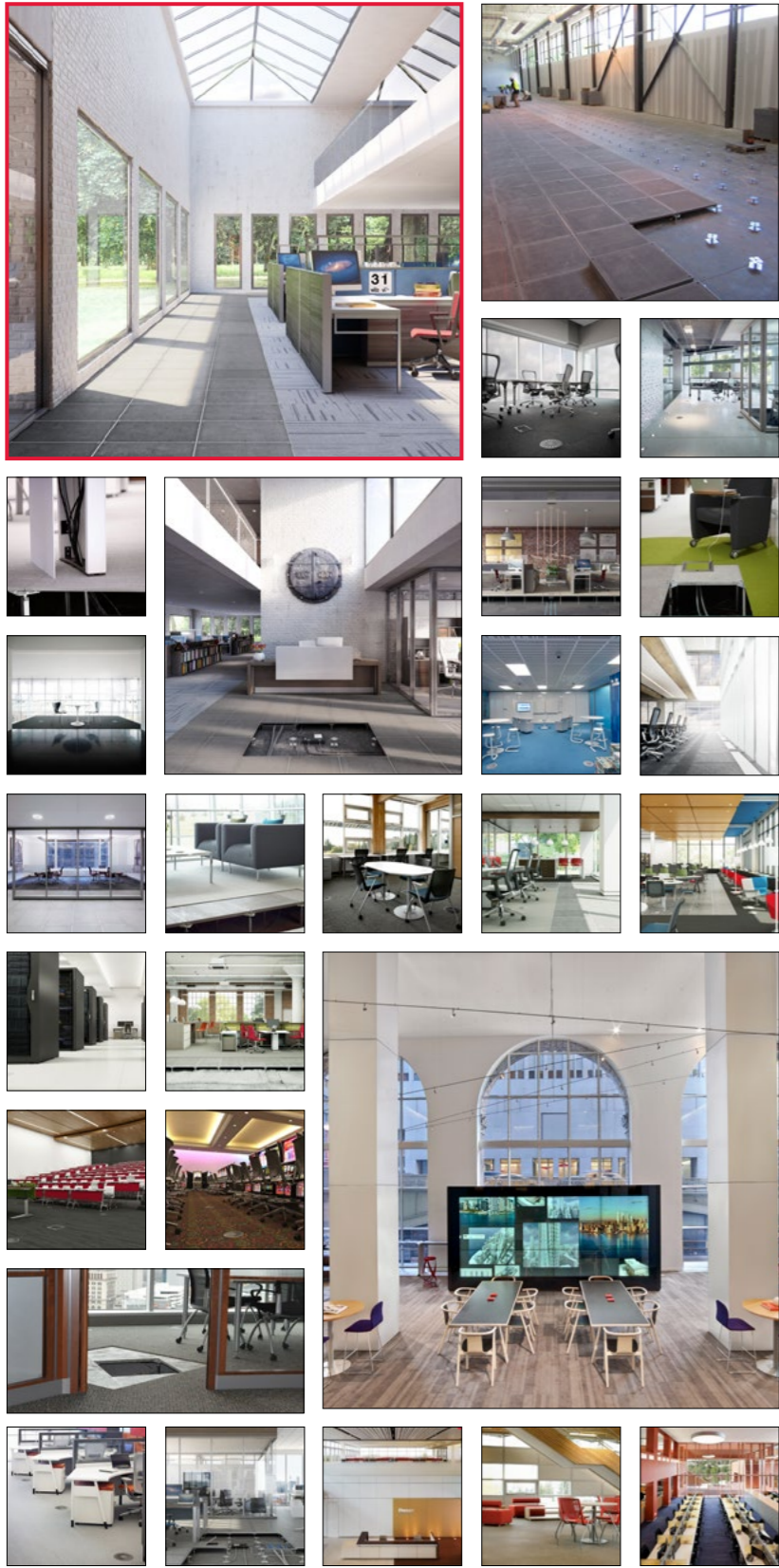
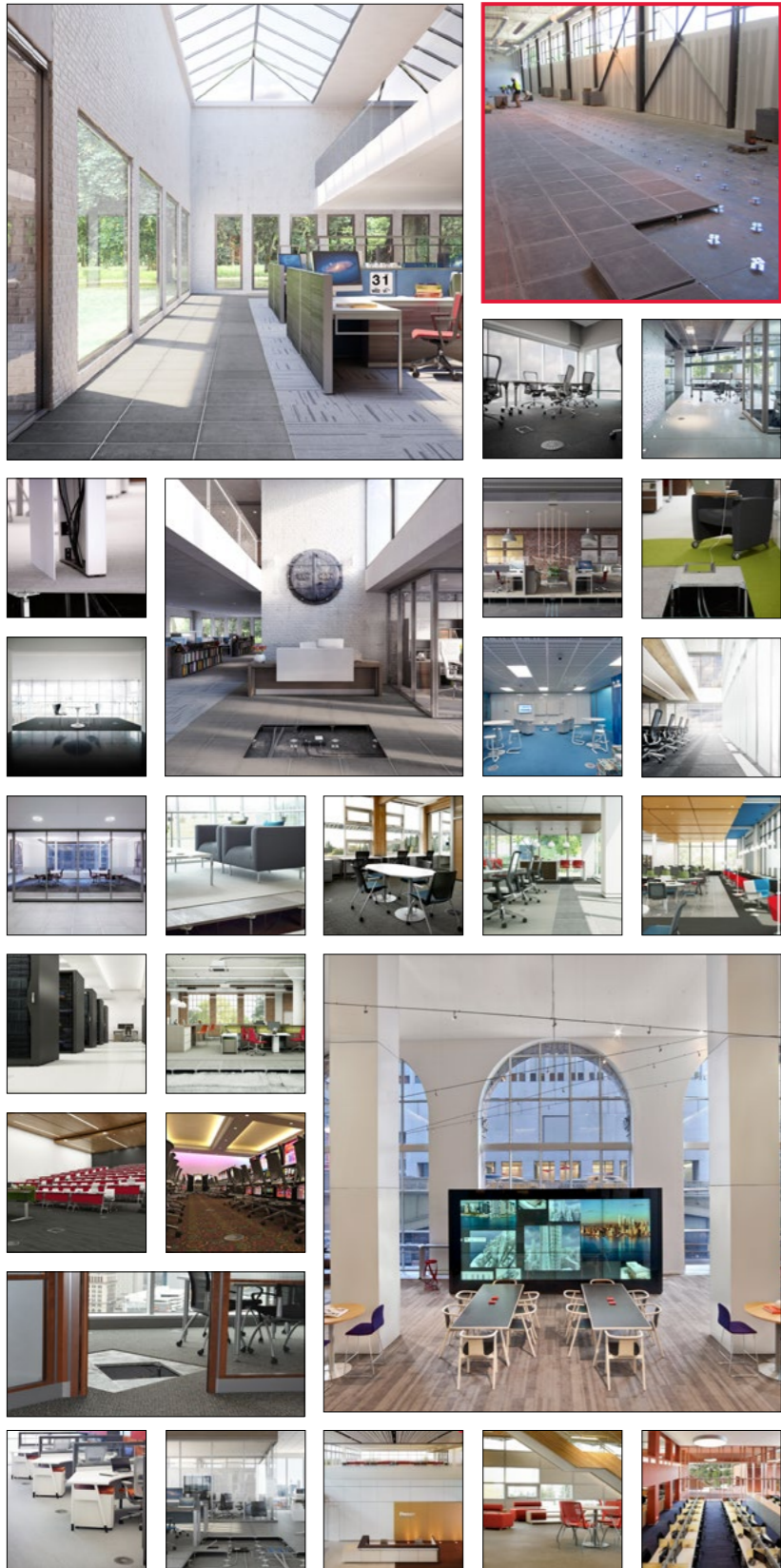
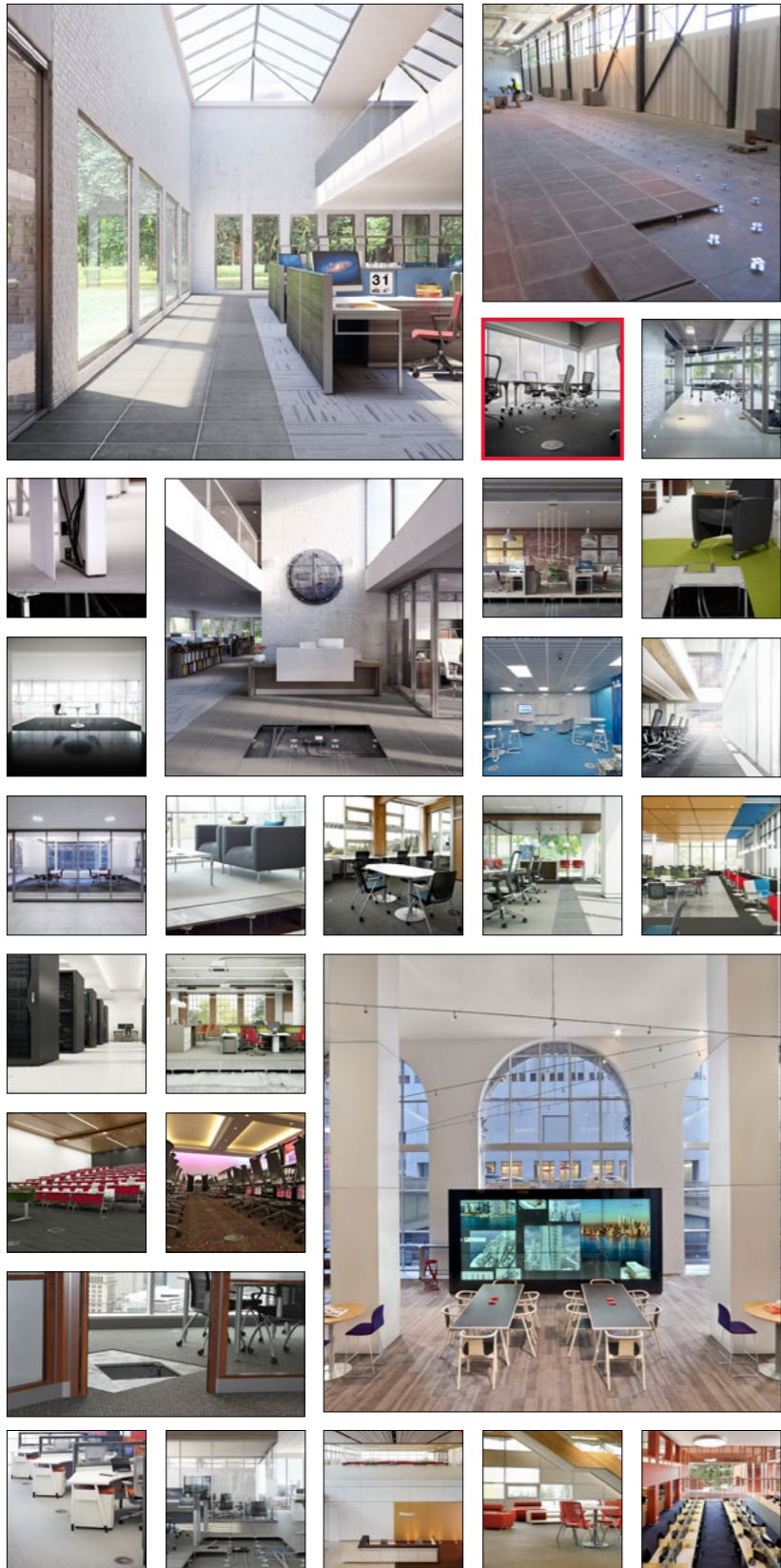
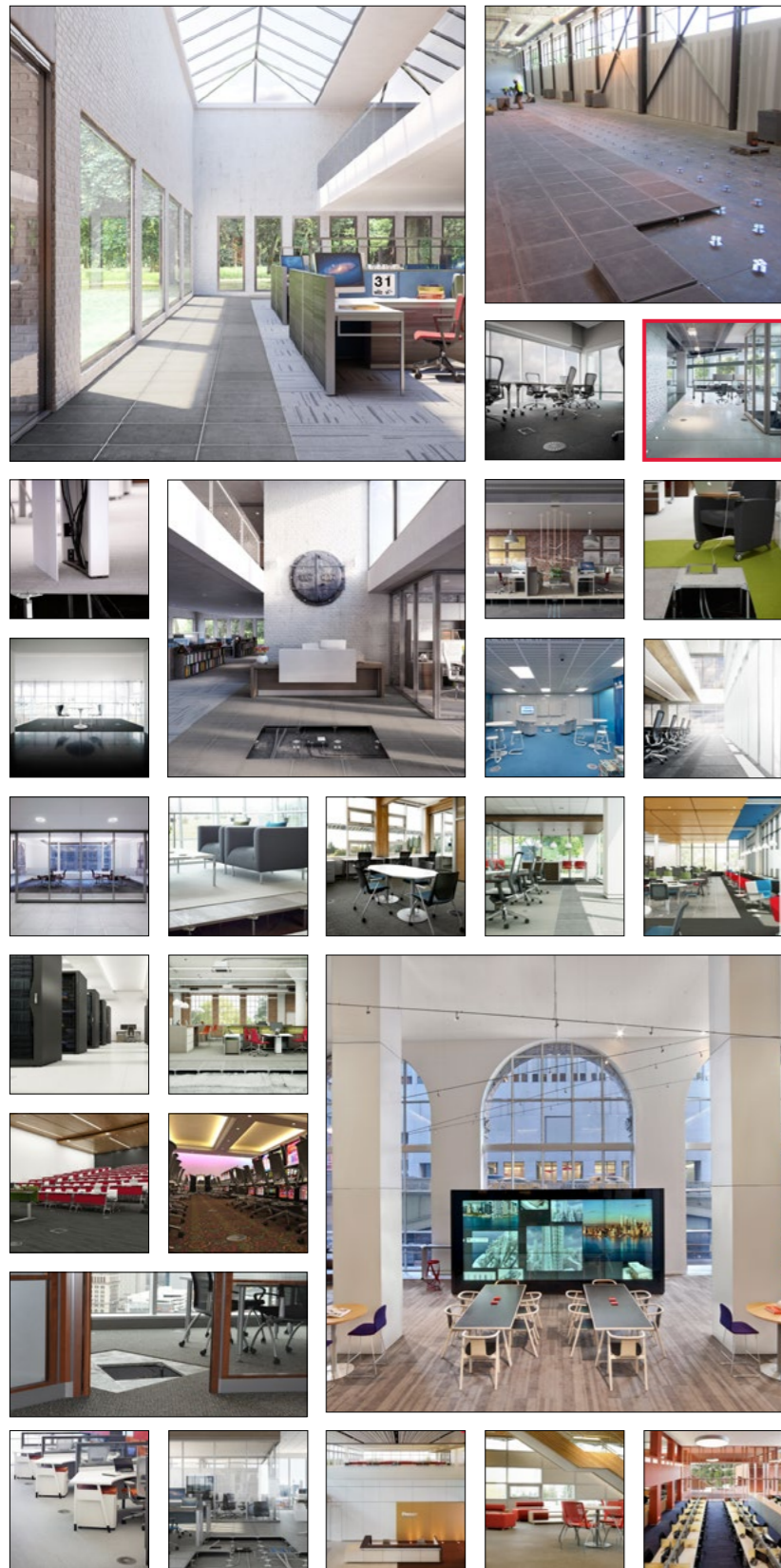
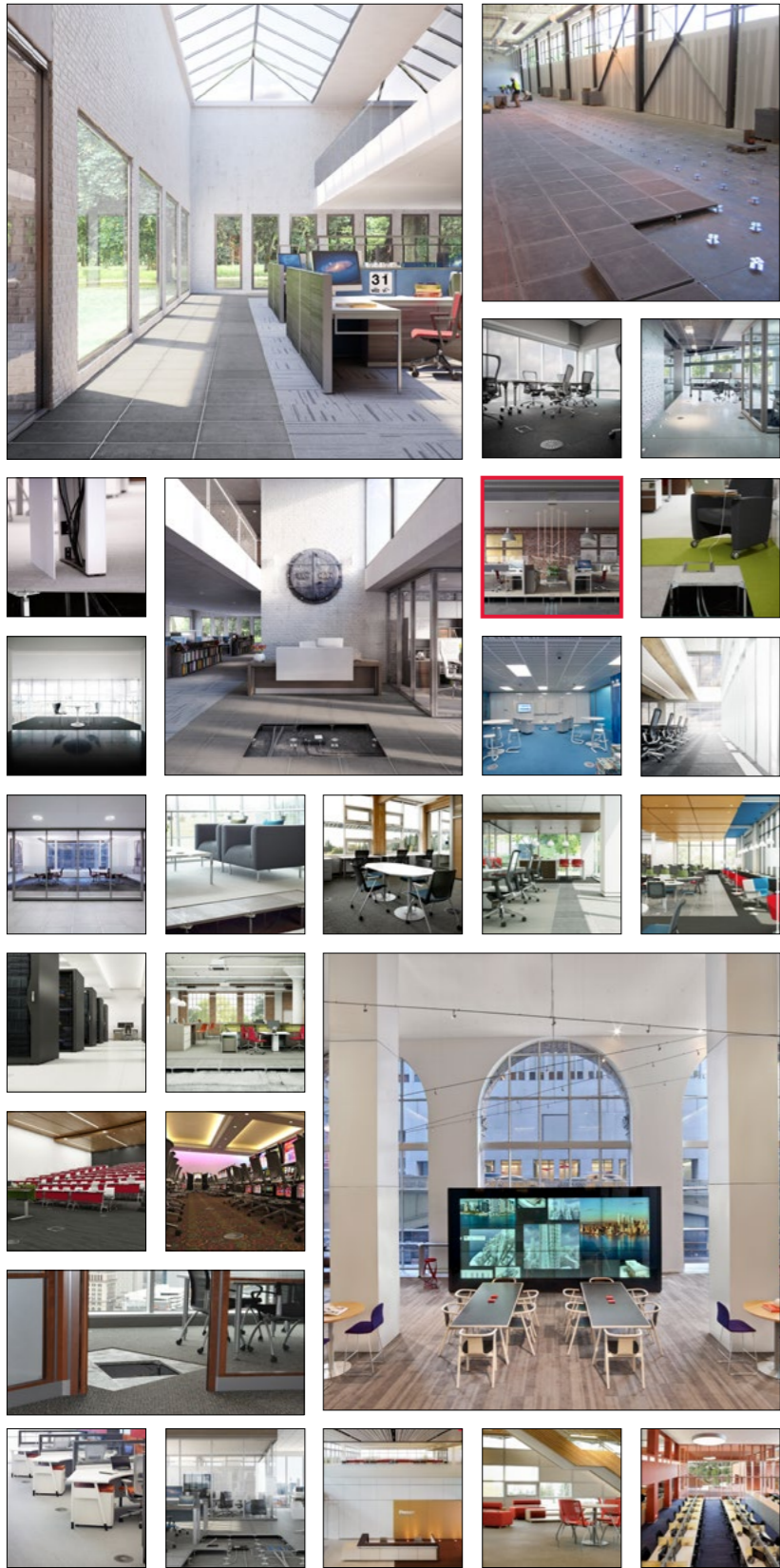


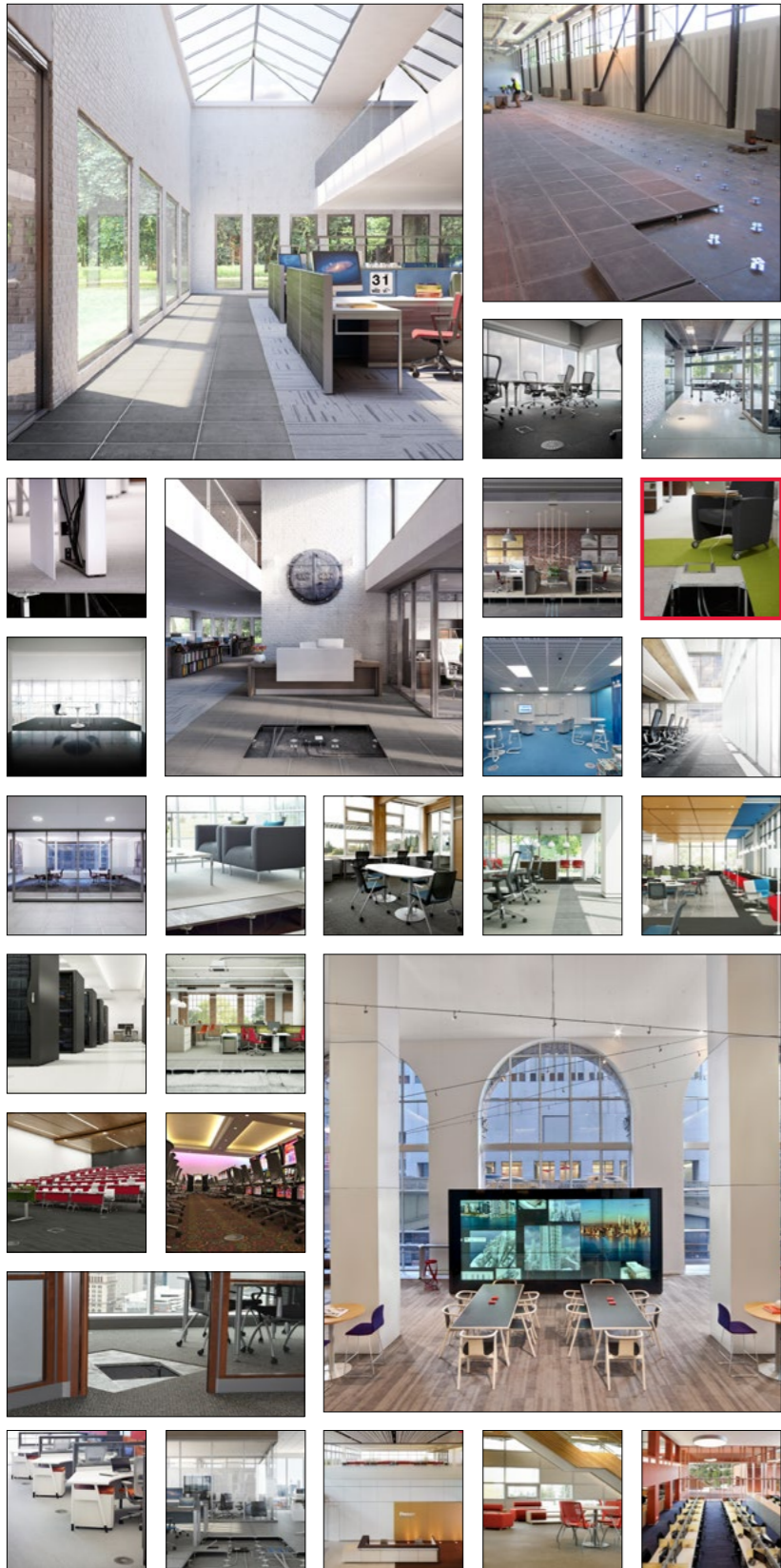
Image Gallery

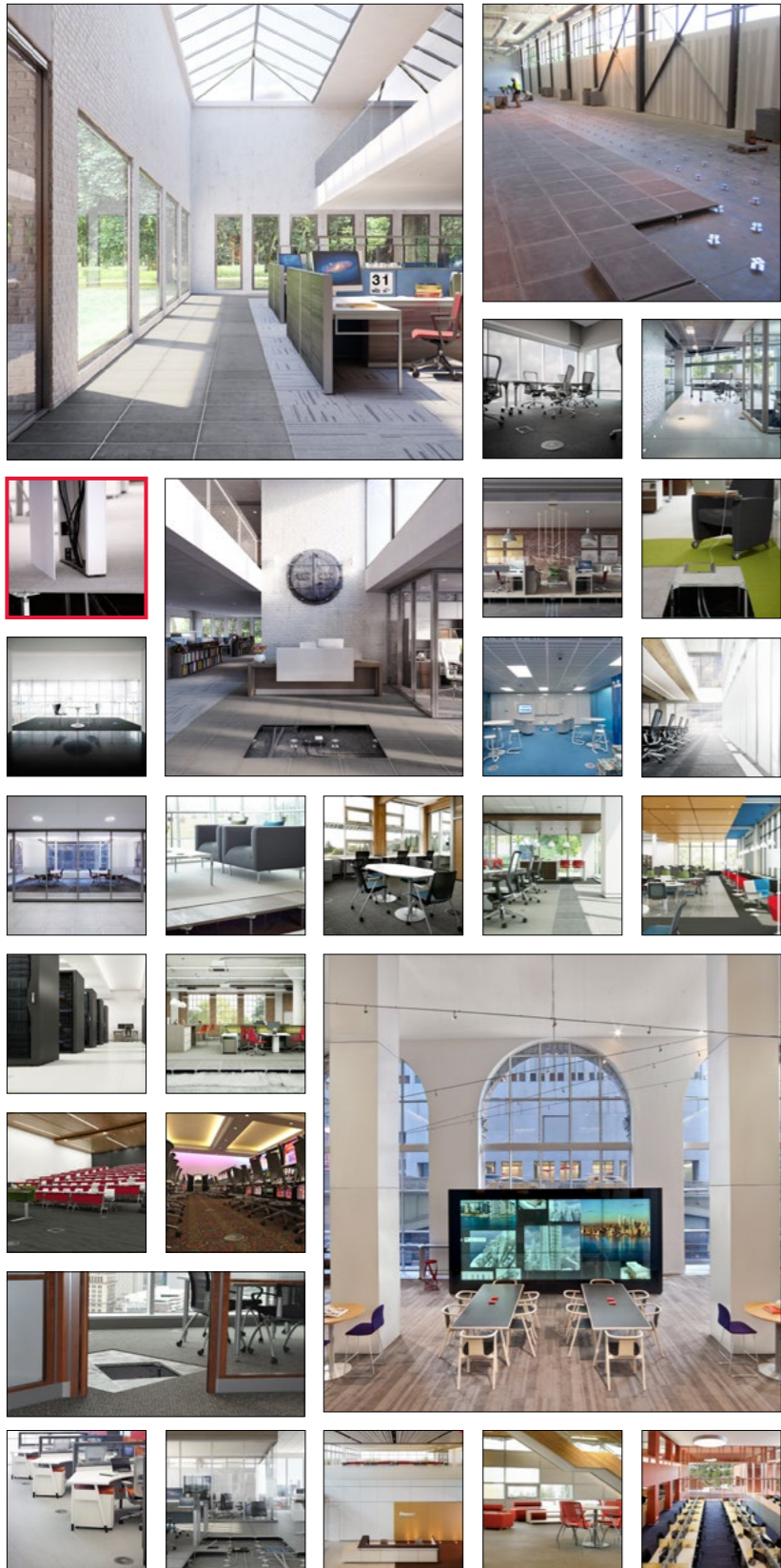


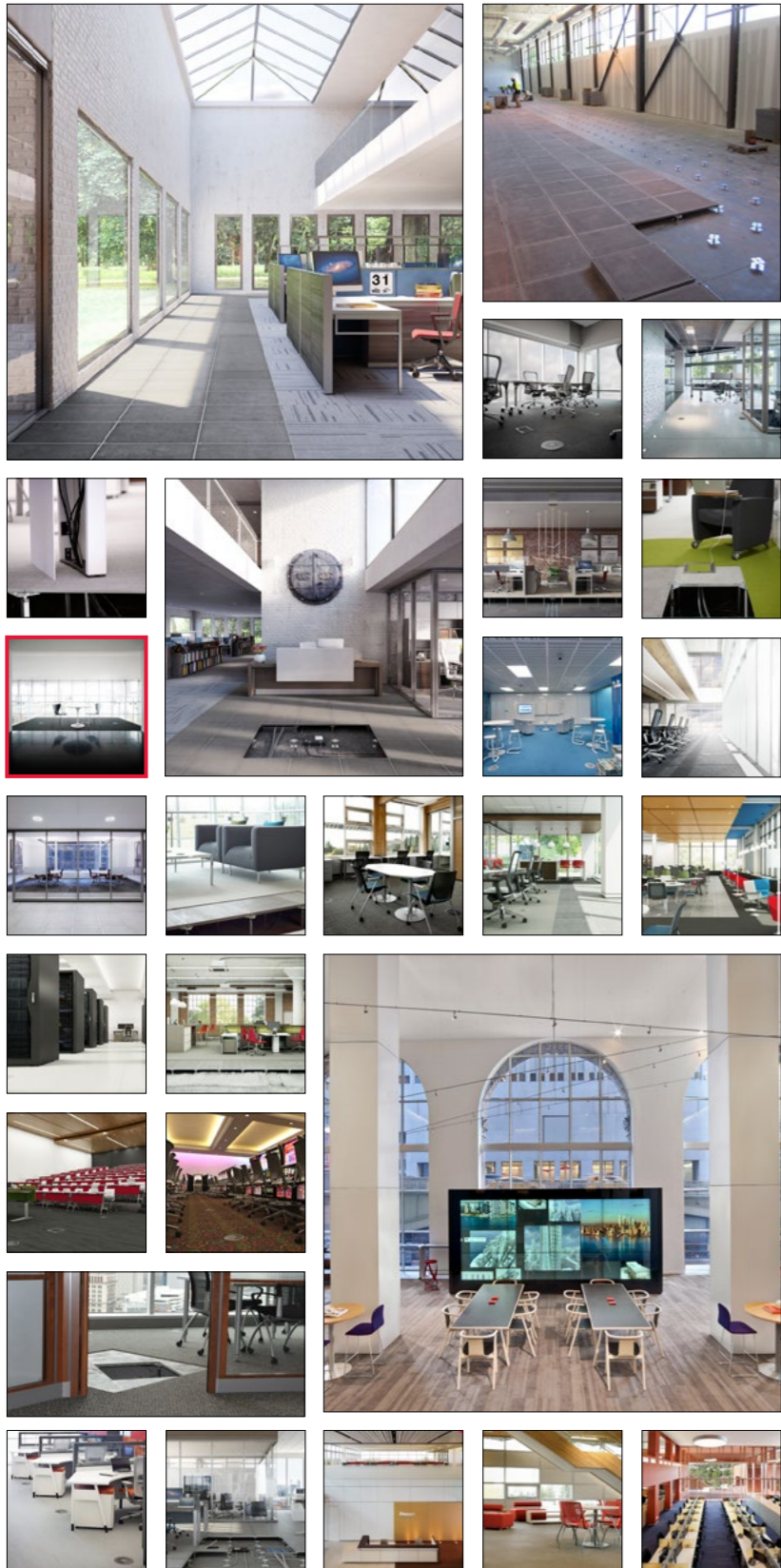


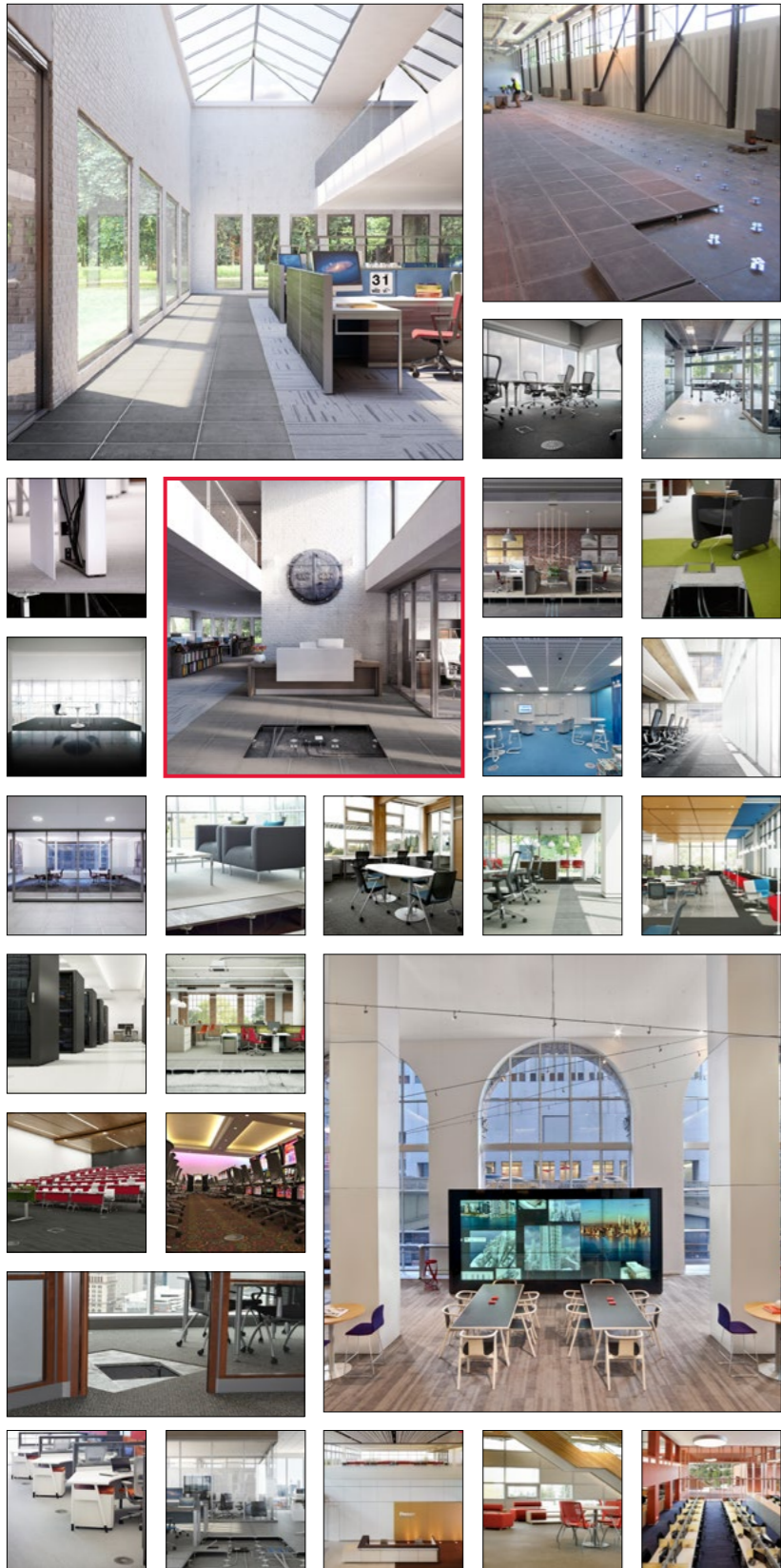


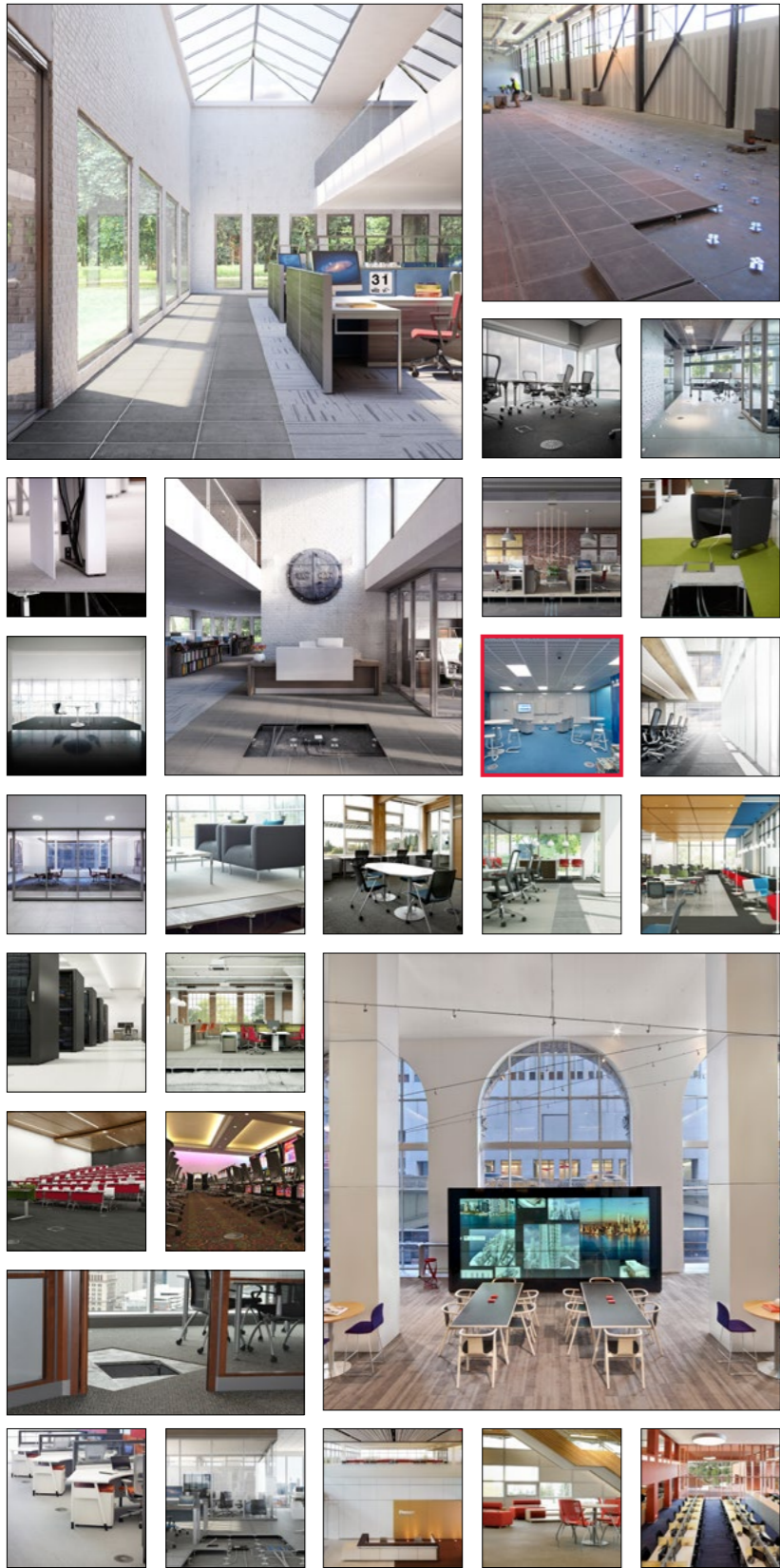


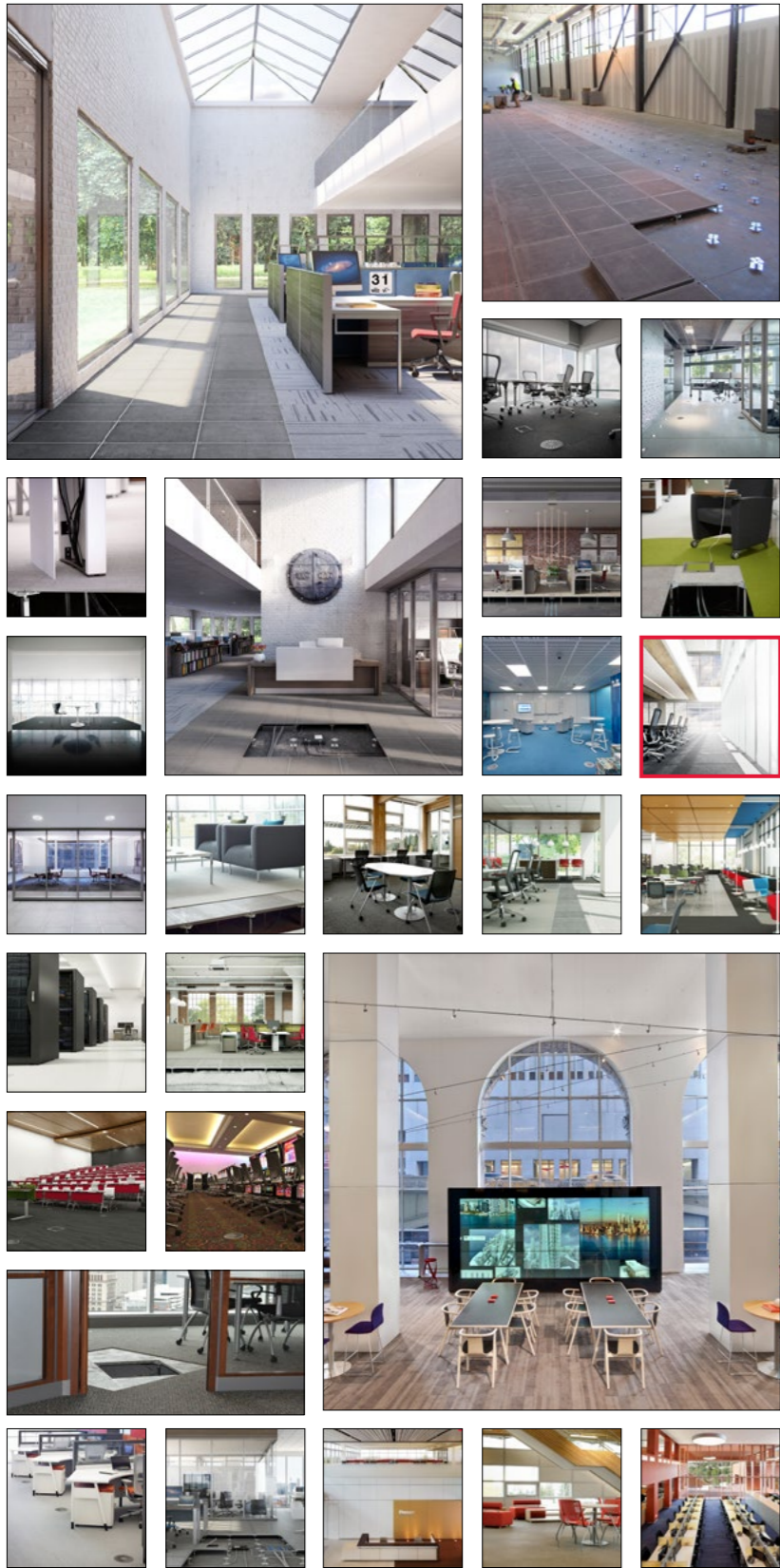












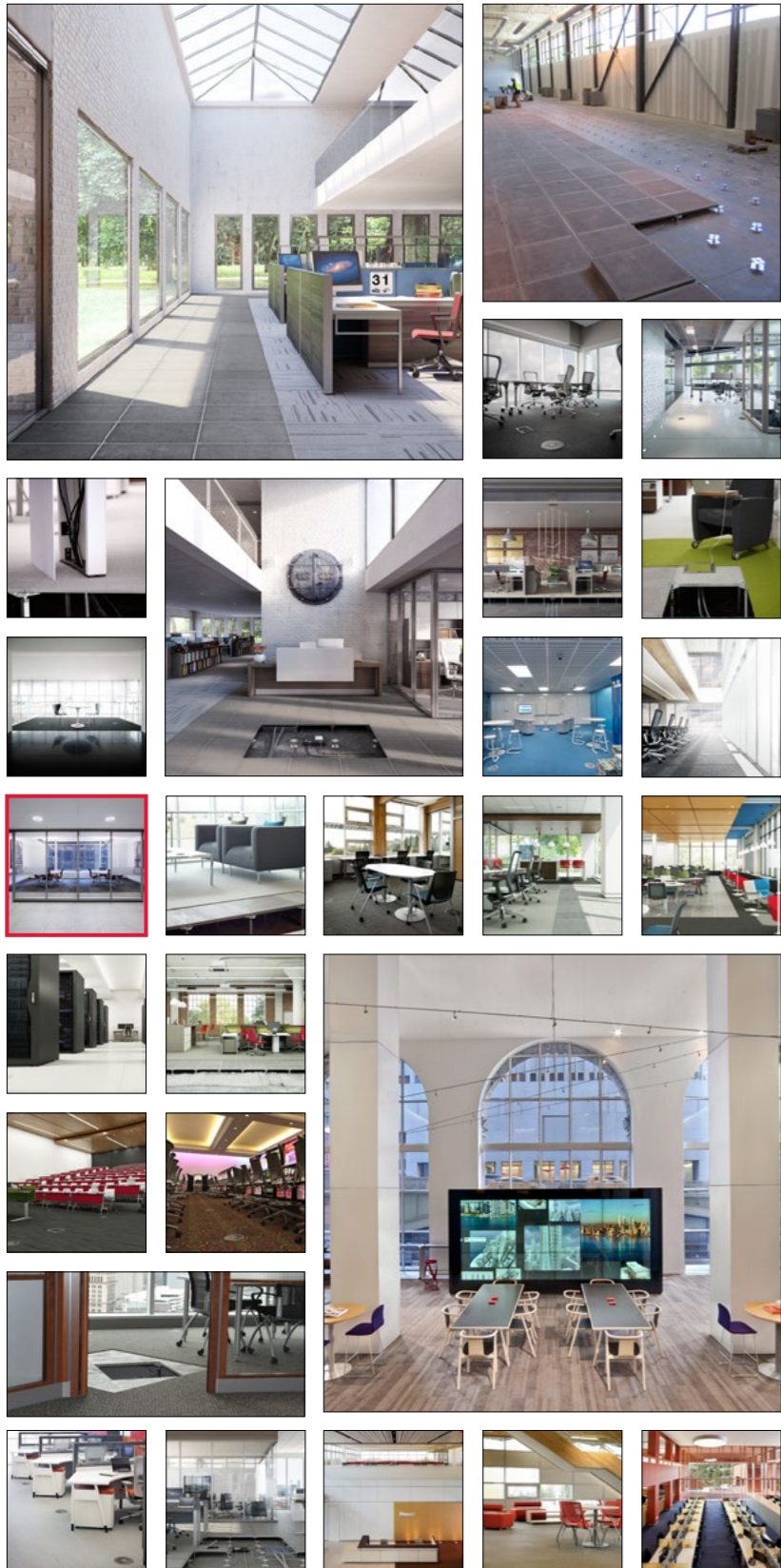
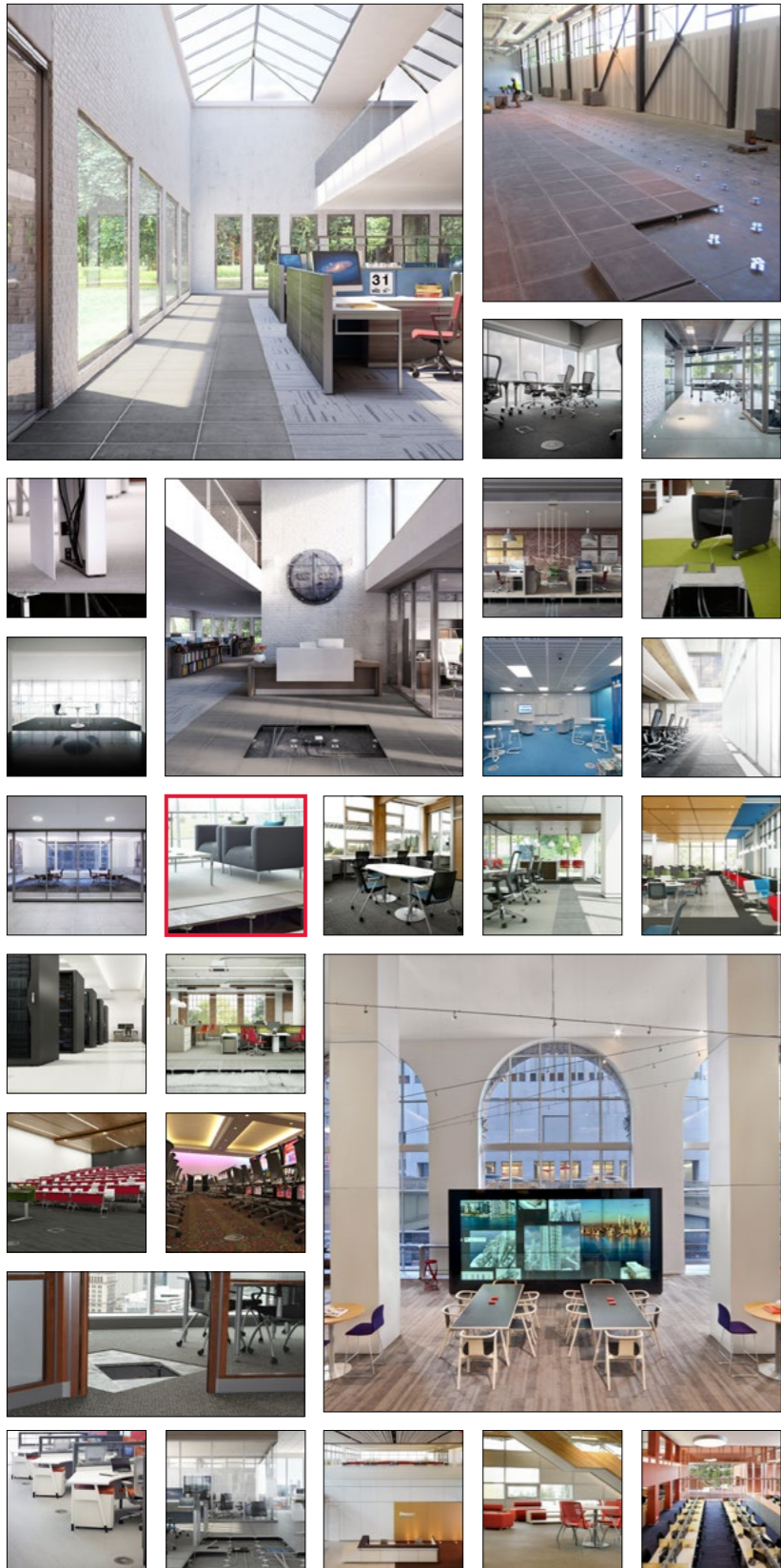
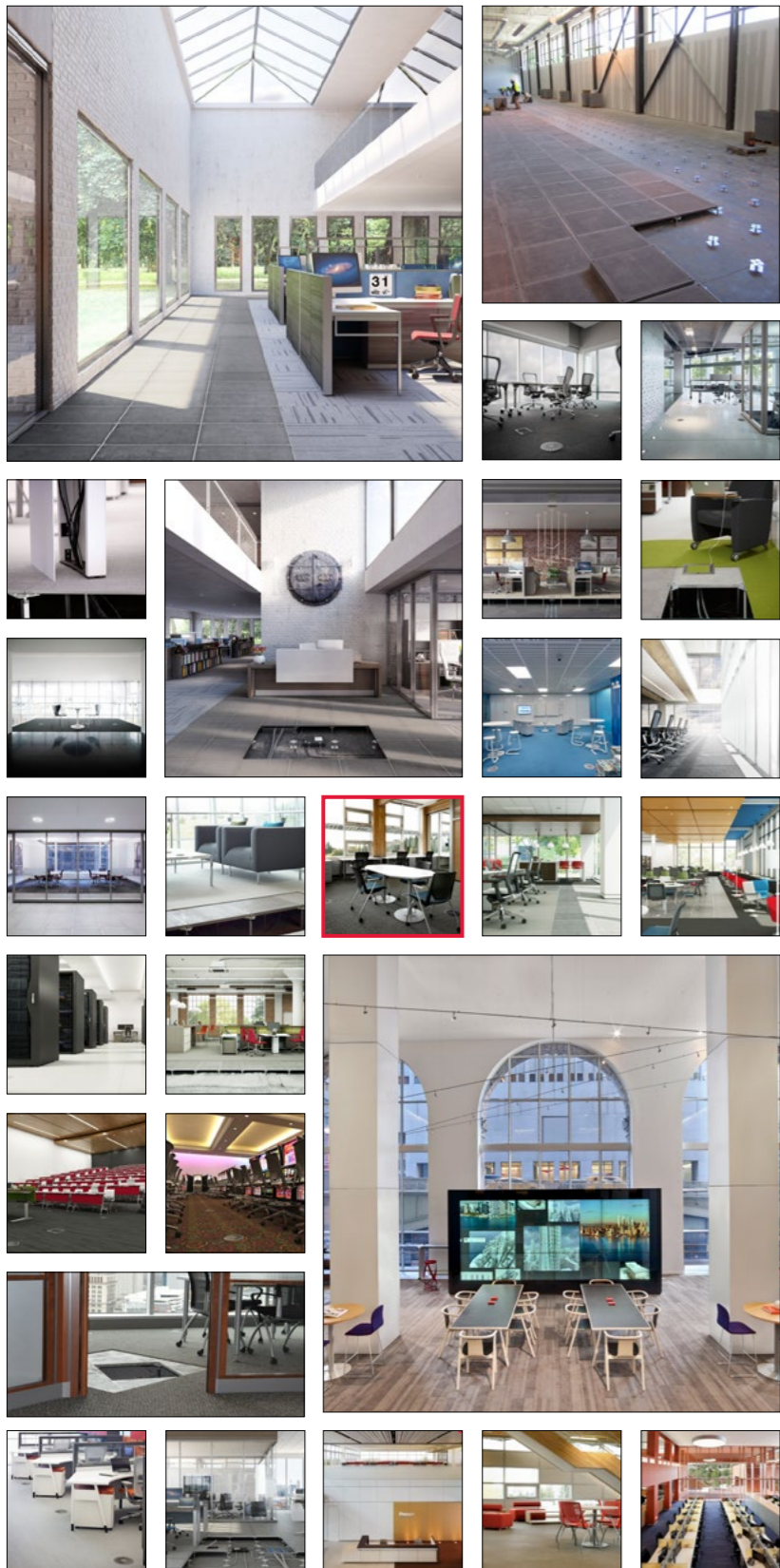
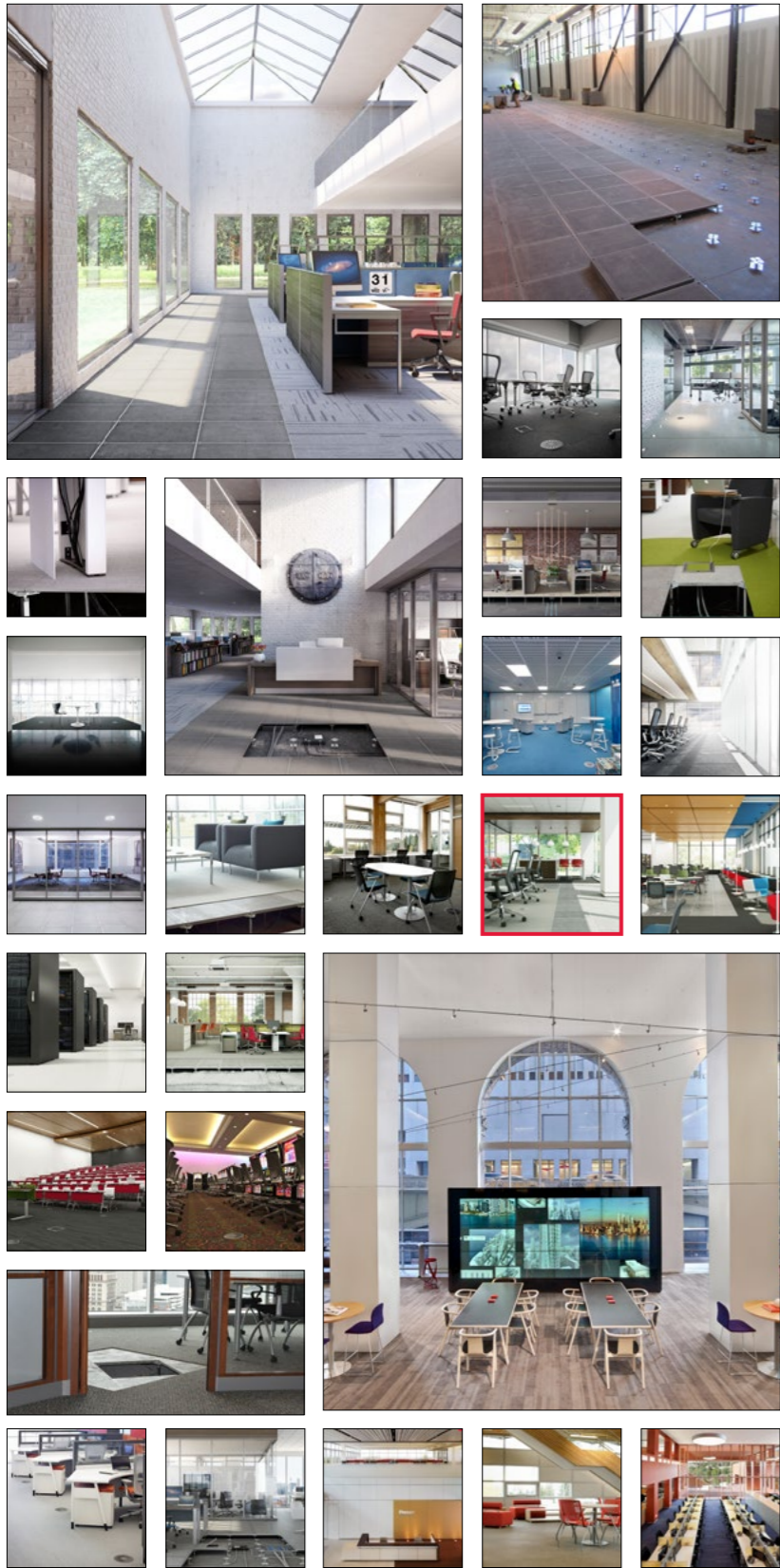
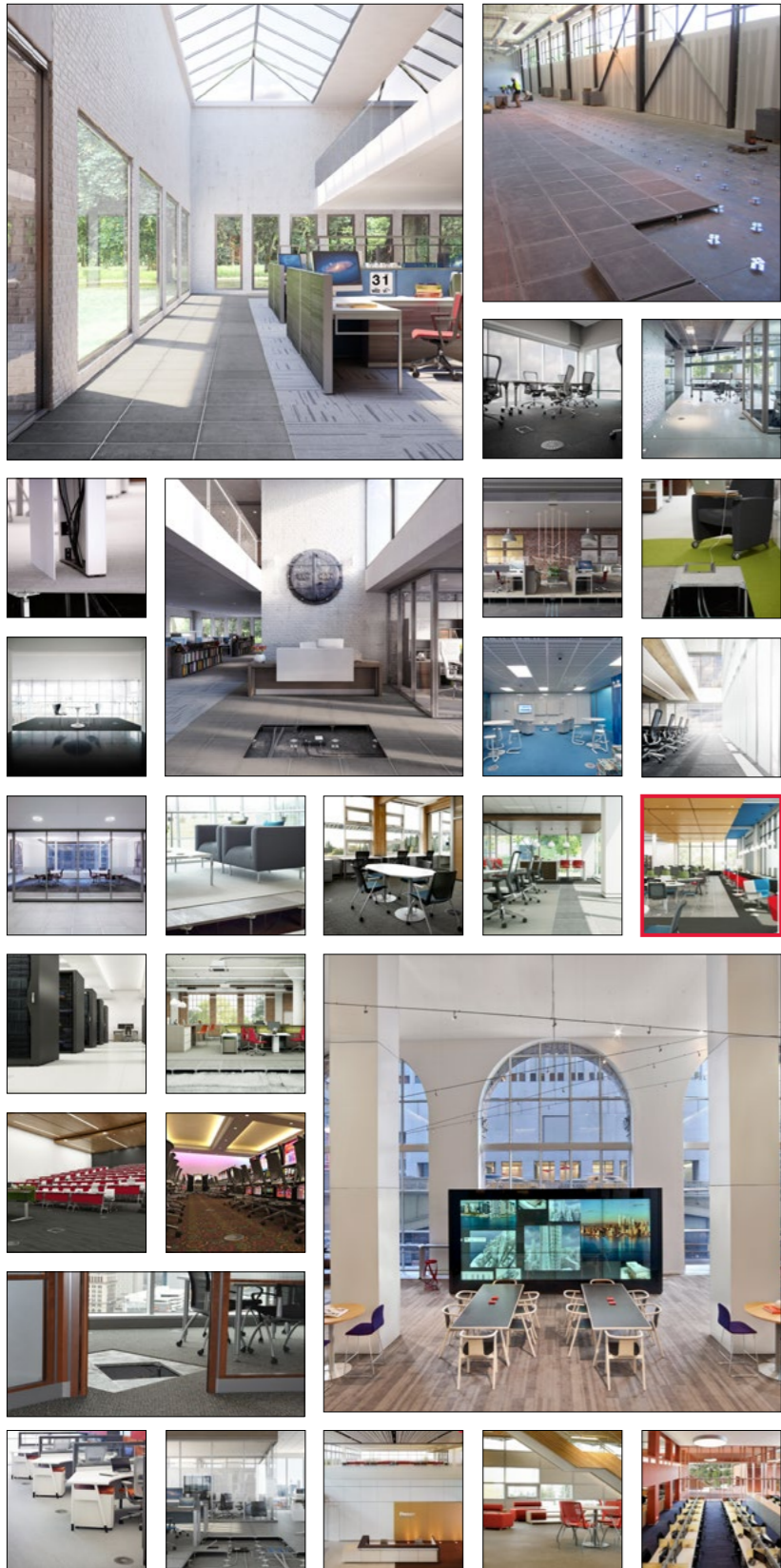


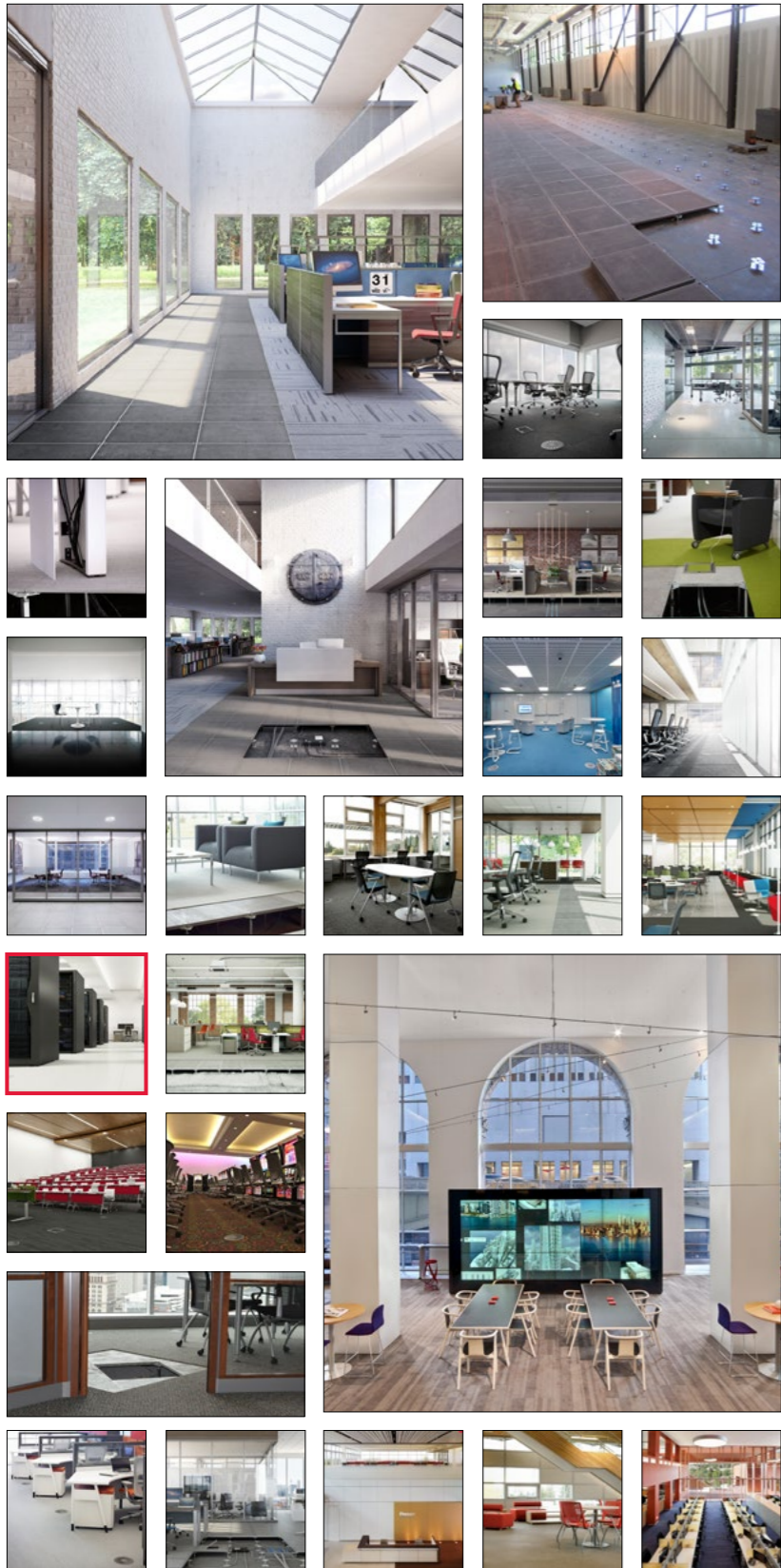
Image Gallery











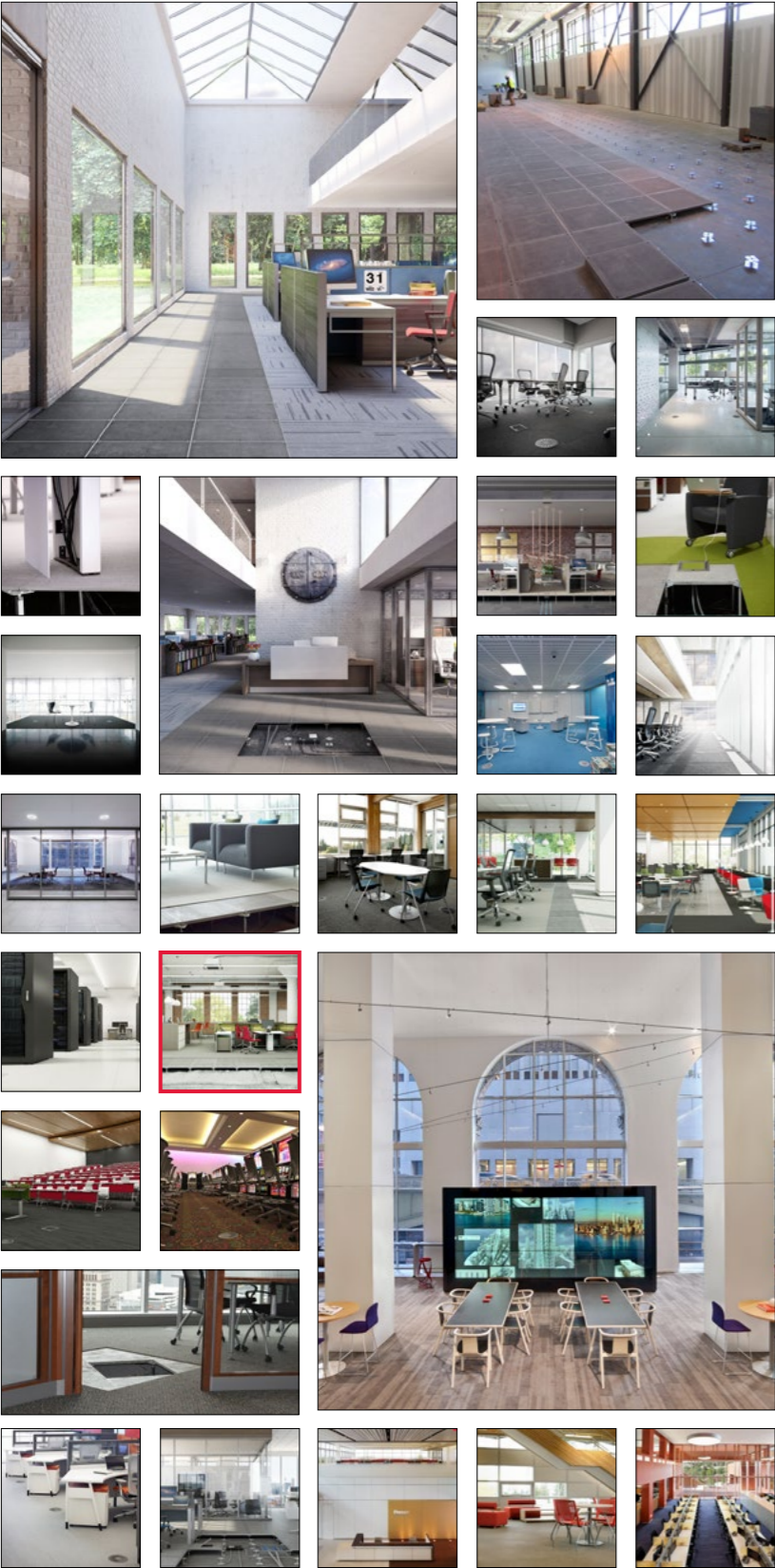
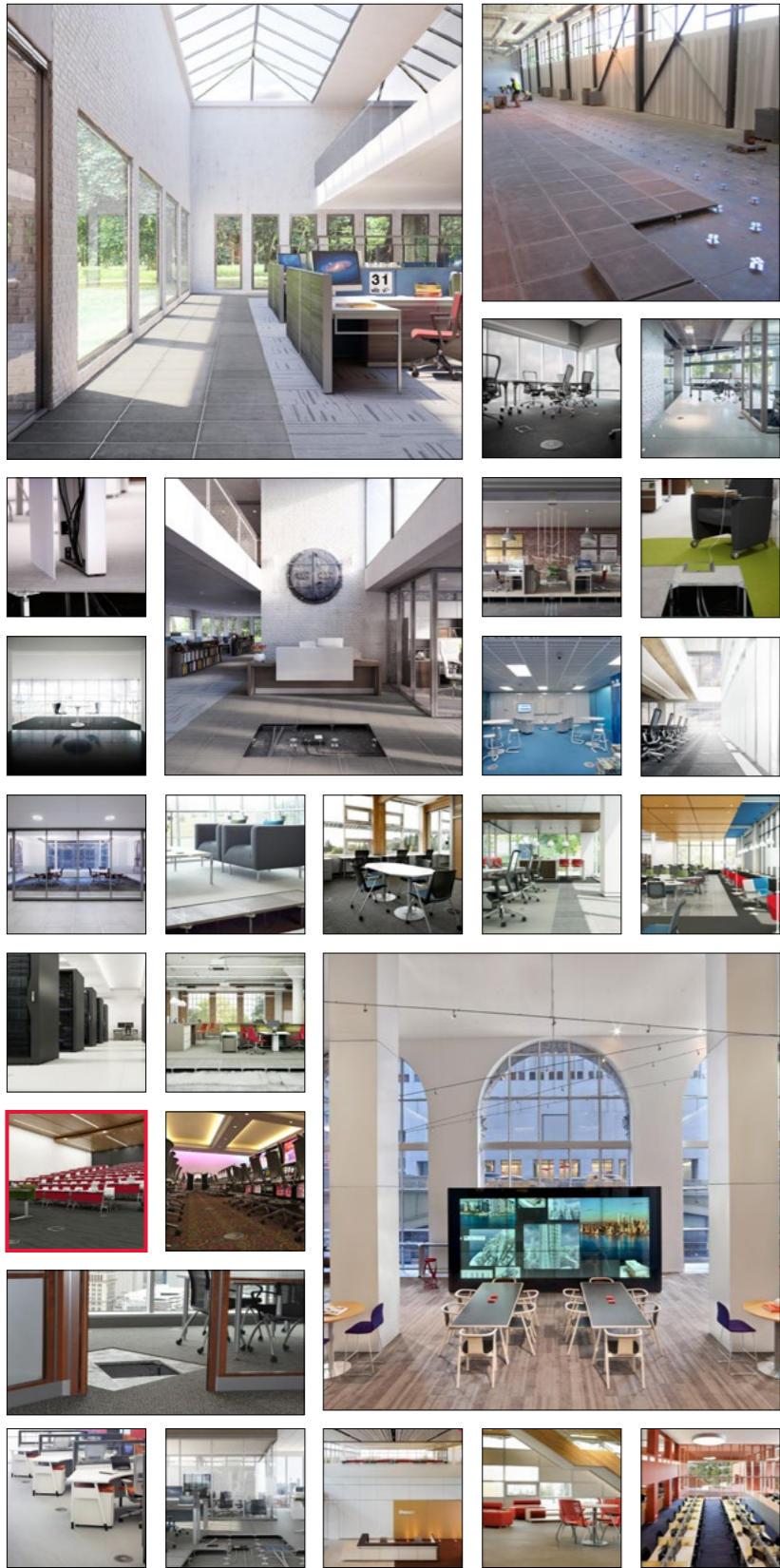


Image Gallery



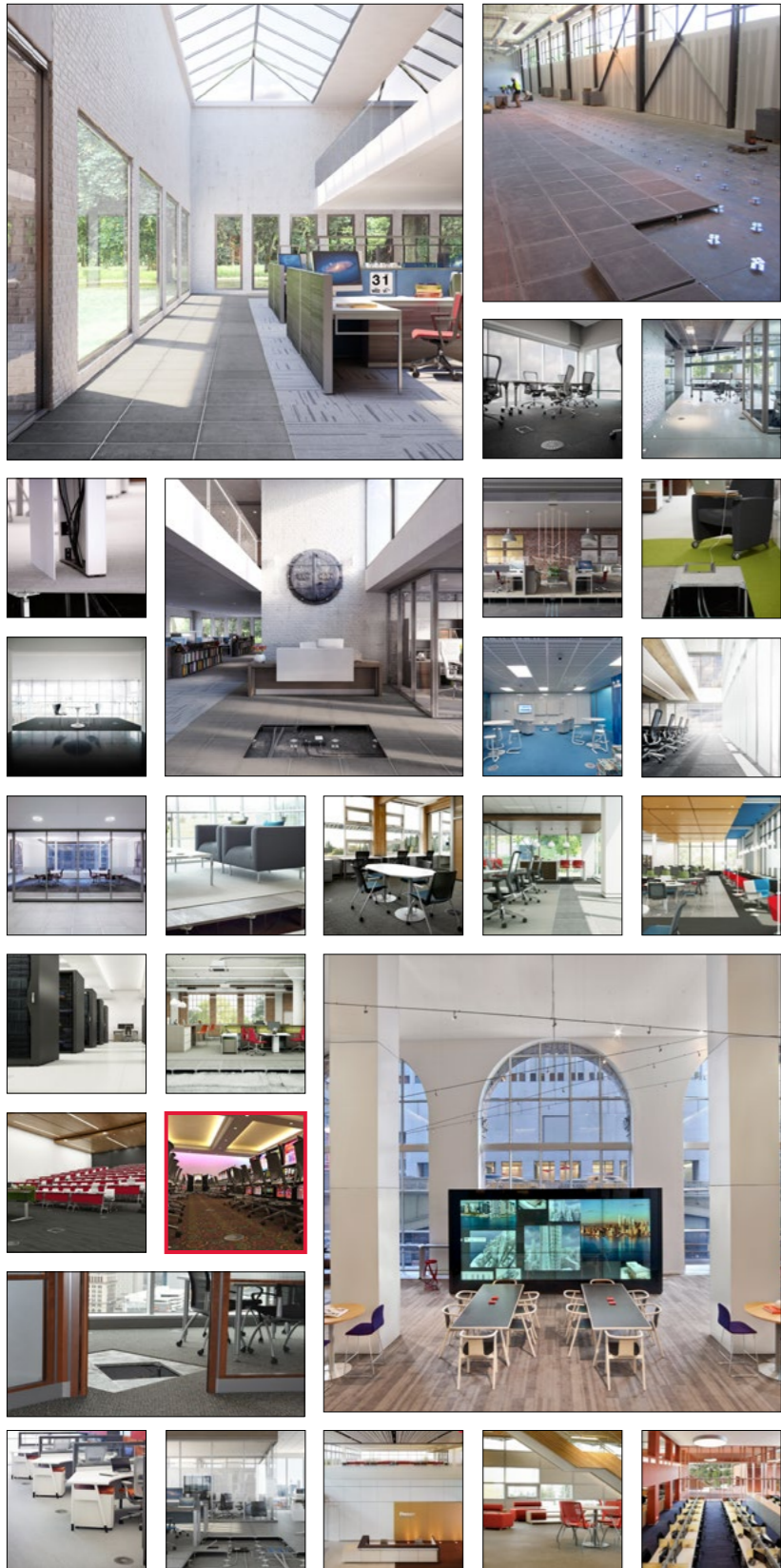


Image Gallery

