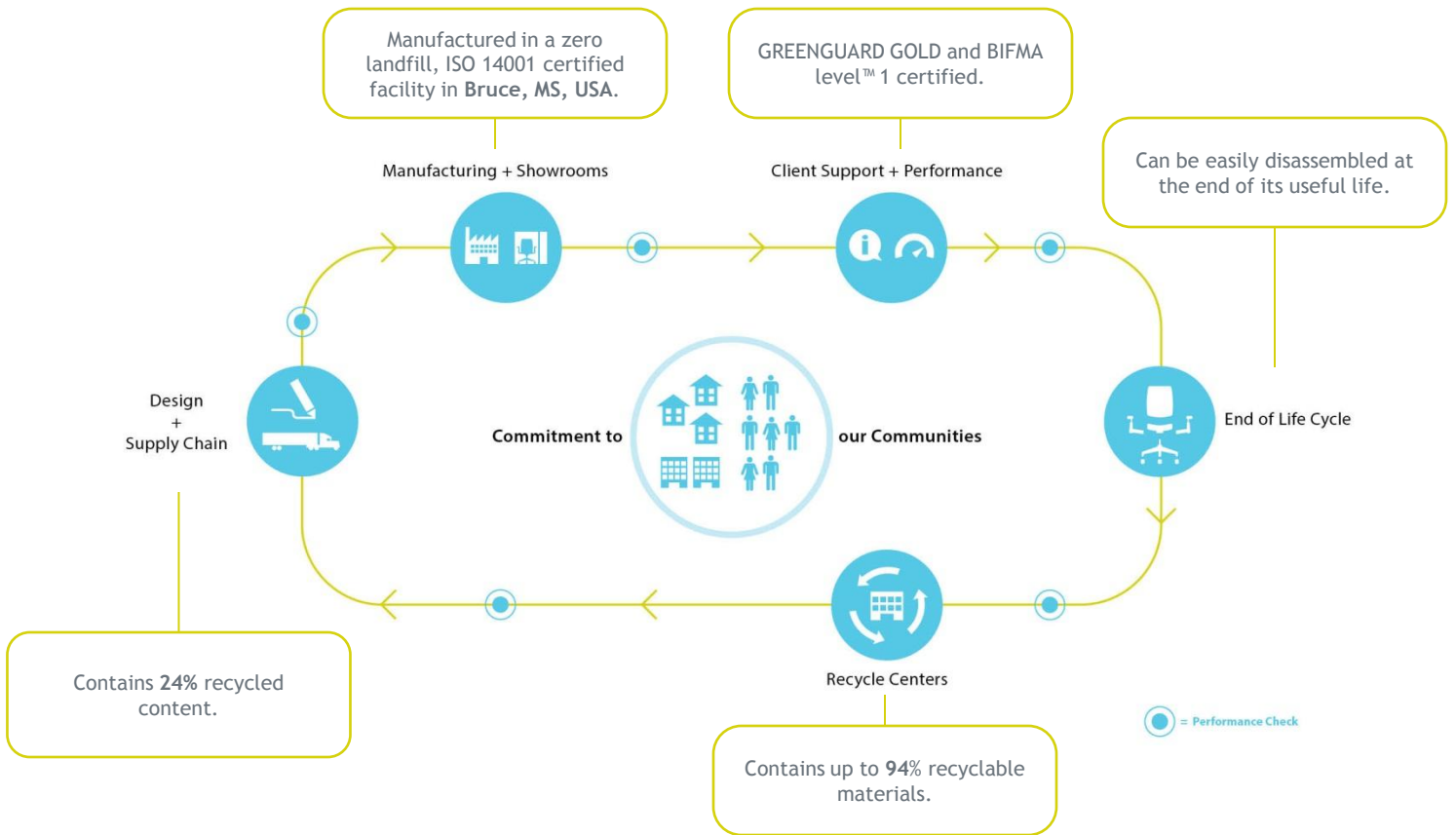


# Improv<sup>®</sup> SE

PRODUCT CATEGORY: TASK SEATING

## PRODUCT ENVIRONMENTAL DATA SHEET

SECTOR: NORTH AMERICA



## HAWORTH<sup>®</sup>

Proven ergonomic performance. A member of the world's largest ergonomic seating family, the Improv S.E. desk chair offers easy-to-use adjustments to accommodate people of all types and sizes.

### RECYCLED CONTENT

	Material Weight	Post-Consumer Recycled Content	Pre-Consumer Recycled Content
Steel	33.70 lbs (69%)	6.70 lbs	4.90 lbs
Plastic	11.90 lbs (24%)	0.00 lbs	0.00 lbs
Foam	3.10 lbs (6%)	0.00 lbs	0.00 lbs
Other materials	0.10 lbs (0%)	0.00 lbs	0.00 lbs
<b>Total</b>	<b>48.70 lbs (100%)</b>	<b>6.70 lbs (14%)</b>	<b>4.90 lbs (10%)</b>

PRODUCT CERTIFICATIONS



level™ 1 certified  
 Certification # C0050452-102



GREENGUARD GOLD certified  
 Certification # 993-420

MATERIAL CHEMISTRY

We believe that our products should be safe for humans and the environment. That's why we are working diligently to identify and eliminate chemicals of concern in the materials we source. While we have identified more than 870 chemicals that we plan to eliminate from our products throughout the next 10 years, we have identified 56 chemicals that we plan to eliminate by 2015.

These include, among others, PVC, benzidine dyes, ozone depletors, hexavalent chromium, certain hazardous phthalates, and PBDE flame retardants. We are committed to achieving this goal and being transparent with our customers about our progress.

LIFE CYCLE ASSESMENT (LCA) SUMMARY

The total greenhouse gas emissions in terms of CO<sub>2</sub> equivalents is 72 kilograms.

The CO<sub>2</sub> equivalent emissions from the Improv SE lifecycle are calculated using the IPCC 2001 GWP 100a methodology.

Life Cycle Assessments (LCAs) are one tool which allows us to enhance the triple bottom line of Haworth products by identifying high environmental impact stages within our products' lifecycles. Haworth is committed to better understanding and reducing the impacts of our products and operations on the natural world.

RECYCLABILITY & END OF LIFE MANAGEMENT

	Material Weight	Recyclable Content
Steel	33.70 lbs (69%)	33.70 lbs
Plastic	11.90 lbs (24%)	11.90 lbs
Foam	3.10 lbs (6%)	0.00 lbs
Other materials	0.10 lbs (0%)	0.00 lbs
<b>Total</b>	<b>48.7 lbs (100%)</b>	<b>45.6 lbs (94%)</b>

Once a Haworth product reaches the end of its life, our product's end-of-life program ensures that customers have options (e.g., recycling, resale, refurbishment, and donation) to prevent it from being discarded into a landfill. To encourage recycling, we have published disassembly instructions for many of our products on the individual product pages. Our products have been intentionally built using highly-recyclable metals and plastics including steel, aluminum, polypropylene, and nylon.

We encourage our customers to contact us regarding end-of-life options in their region so that we can help them make the world a better place for future generations.

Improv is packaged in a polyethylene bag and corrugated cardboard, both readily recyclable. Seating products can also be packaged with blanket wrap which is 100% reusable.

## LEADERSHIP IN ENERGY AND ENVIRONMENTAL DESIGN (LEED®) v2009

**Interior Design and Construction (ID+C)**

MRC4: Recycled Content	Improv SE contains 14% post-consumer and 10% pre-consumer recycled content.	1-2 points
MRC5: Regional Materials	Improv SE is manufactured in Bruce, MS, USA.	1-2 points
IEQc4.5: Low-emitting materials - Systems Furniture and Seating	Improv SE is GREENGUARD GOLD certified as low-emitting.	1 point

**Building Design and Construction (BD+C)**

MRC4: Recycled Content	Improv SE contains 14% post-consumer and 10% pre-consumer recycled content.	1-2 points
MRC5: Regional Materials	Improv SE is manufactured in Bruce, MS, USA.	1-2 points

**Core and Shell Development (CS)**

MRC4: Recycled Content	Improv SE contains 14% post-consumer and 10% pre-consumer recycled content.	1-2 points
MRC5: Regional Materials	Improv SE is manufactured in Bruce, MS, USA.	1-2 points

To learn more about Haworth sustainability initiatives [click here](#).

Product Support

Visit [www.haworth.com](http://www.haworth.com) to find the Haworth dealer closest to you.

Environmental support

Contact [sustainability@haworth.com](mailto:sustainability@haworth.com)

## LEADERSHIP IN ENERGY AND ENVIRONMENTAL DESIGN (LEED®) v4

## LEED ID+C: Commercial Interiors | v4

MR109: Interiors life-cycle impact reduction	Depending on products chosen, Haworth products can contribute to some of the design for flexibility strategies including; take back system, recyclable materials, flexible power distribution, moveable walls, or access flooring.	1-4 points
MR114: Building product disclosure & optimization- sourcing of raw materials	Haworth is a member of the UN Global Compact and published an annual Communication of Progress which contributes to Option 1: raw material source and extraction reporting. Haworth products also contain recycled content or FSC certified wood which contribute to Option 2: leadership extraction practices.	1-2 points
IEQ112: Low-emitting Materials	Haworth products are Greenguard certified which is compliant with ANSI/BIFMA Standard Method M7.1-2011.	1-3 points

## LEED BD+C: New Construction | v4

MR114: Building product disclosure & optimization- sourcing of raw materials	Haworth is a member of the UN Global Compact and published an annual Communication of Progress which contributes to Option 1: raw material source and extraction reporting. Haworth products also contain recycled content or FSC certified wood which contribute to Option 2: leadership extraction practices.	1-2 points
IEQ112: Low-emitting Materials	Haworth products are Greenguard certified which is compliant with ANSI/BIFMA Standard Method M7.1-2011.	1-3 points

To learn more about Haworth sustainability initiatives [click here](#).

Product Support

Visit [www.haworth.com](http://www.haworth.com) to find the Haworth dealer closest to you.

Environmental support

Contact [sustainability@haworth.com](mailto:sustainability@haworth.com)

**HAWORTH®**