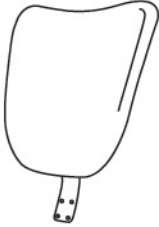
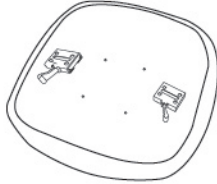
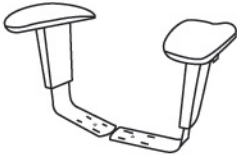

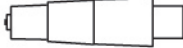

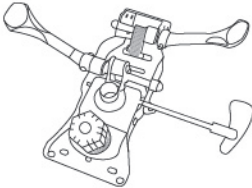

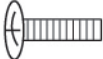
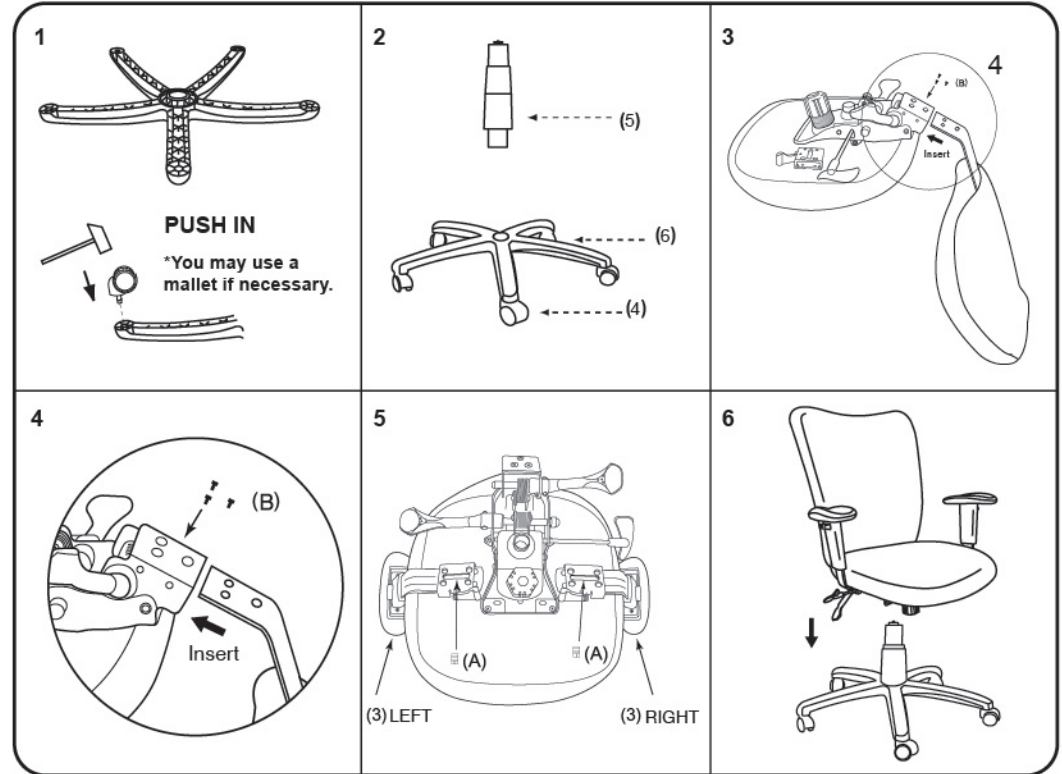


**IMPORTANT NOTICE:
HARDWARE PACKAGE IS ATTACHED
ON THE BOTTOM OF SEAT CUSHION.**

MODEL: B2007 B750 B756 B2017

(1)x1  Back	(2)x1  Seat	(3)x1 (L)x1 (R)  Right & Left Arm
(4)x5  Caster	(5)x1  Gas Lift W/ Cover	(6)x1  Nylon Base
(7)x1  Mechanism	<p>(A)x2  M10 ARM BRACKET SCREW (These screws are in the adjustable arm bracket attached to seat bottom)</p> <p>(B)x3  M8*22 L-BAR SCREW</p>	



Insert and loosely tighten all screws. When assembly is completed, fully tighten all screws before using. This chair is only intended for sitting. Any other use will void the warranty.

