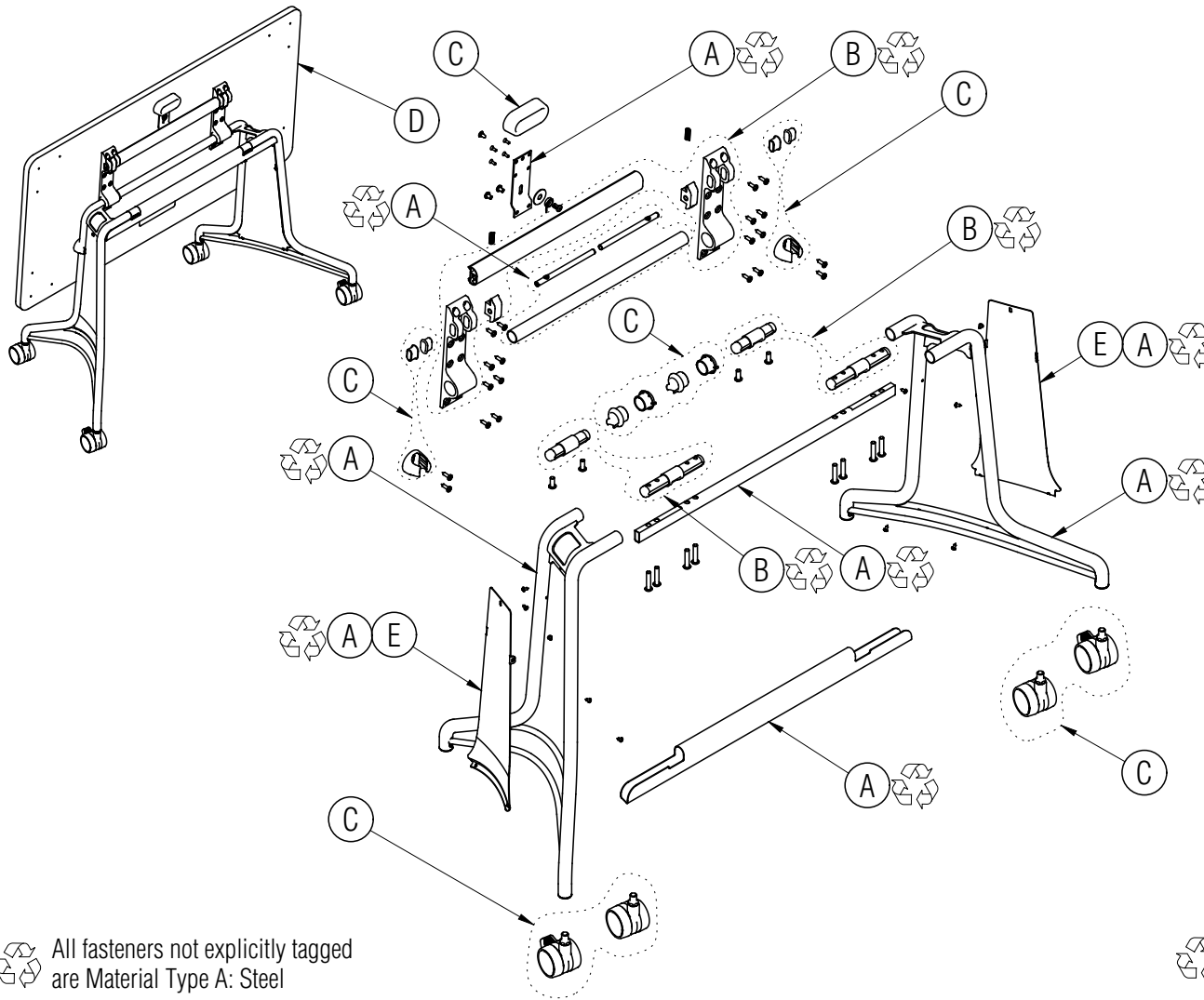


Disassembly Instructions



Enlite Tables

Material Type: A . Steel B. Aluminum C. Plastic D. Wood / Particle Board E. Laminate



Procedure:

1. Remove the screws holding the latch pull and the legs to the underside of the table top and remove top. Remove the leg clips from under the table top.
2. Remove the screws holding the front and back cross tubes to each leg and pull apart the pull bar and leg assemblies.
3. Pull out the plugs holding the hinges onto the leg assemblies. Separate the bushings from the plugs and hinges.
4. Remove the screws holding the pull onto the pull bracket and the bracket onto the pull bar and remove the pull and bracket.
5. Unscrew the latch rods from the slide latches and remove the bushings and springs.
6. Remove the screws holding the side panels onto the leg assemblies, if present, and remove the side panels.
7. Remove the casters from each leg assembly.

General Notes:

1. Disassembly time: 20-30 minutes
2. This procedure assumes basic familiarity with hand tools and furniture terminology: no specialized training is required
3. All materials removed and disassembled shall be sorted and segregated with like materials and disposed of or recycled according to recycling availability or waste acceptance
4. For items to be recycled, refer to KI's End of Life Recycling Matrix and KI's End of Life Recovery Options Matrix, available at www.ki.com

All fasteners not explicitly tagged are Material Type A: Steel

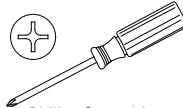
Required Tools



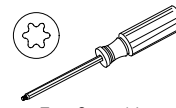
Gloves



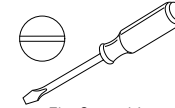
Safety Glasses



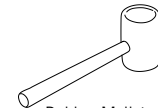
Phillips Screwdriver



Torx Screwdriver



Flat Screwdriver



Rubber Mallet