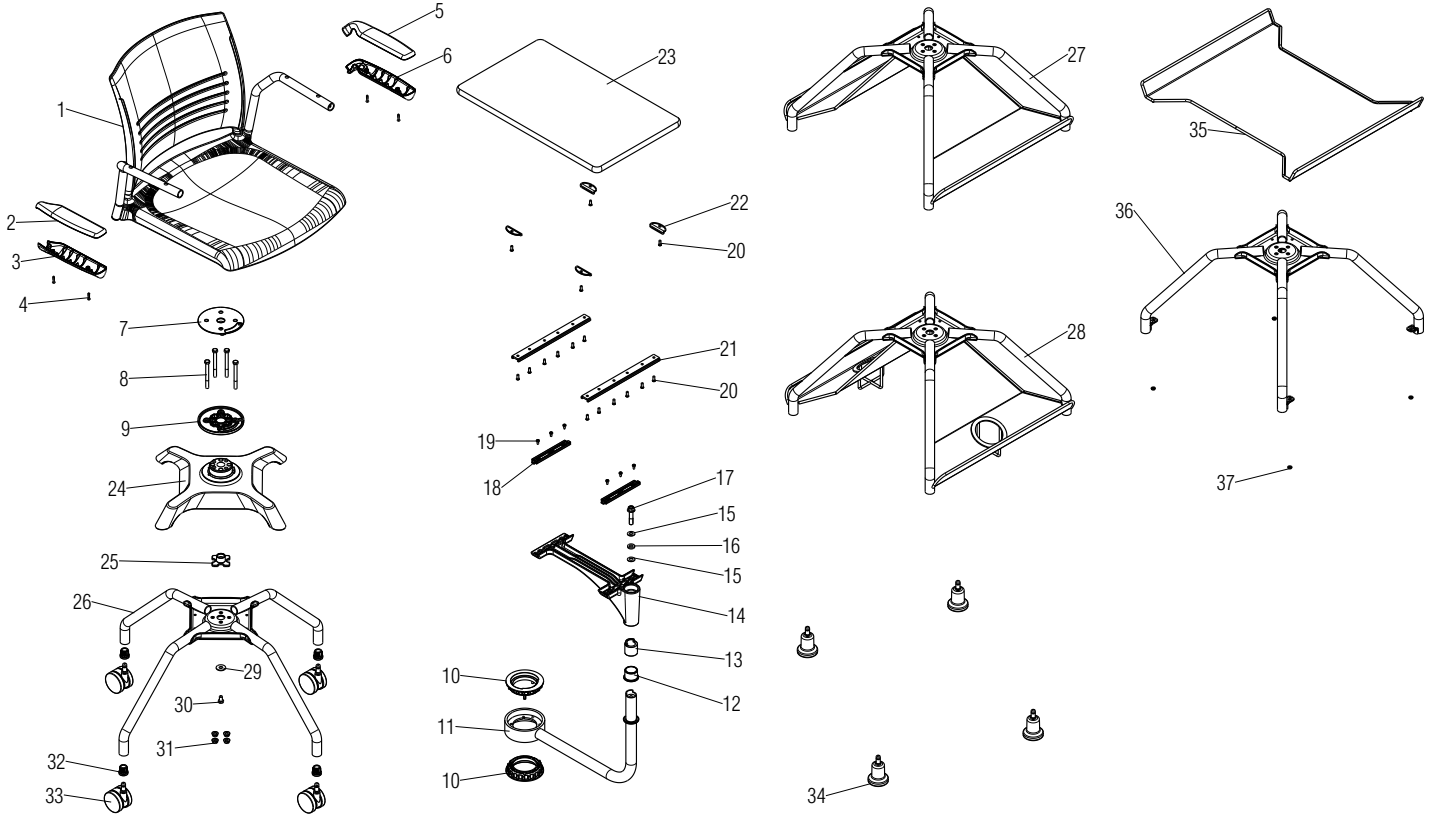


Parts Diagram

Learn2™ Classroom Furniture

Strive® Seating Armchair with Laminate Worksurface
With and Without Accessories

September 2016



.XX = Select Color

Item	Part Number	Item Description	Qty	Item	Part Number	Item Description	Qty
1	2SRS	Strive Pressure Fit Chair with Arms	1	20	46.0466	Screw, K-50 2.24 x 13mm, T-2	16
2	46.5384.RH.XX	Strive Arm Rest, Top Right	1	21	47.1003	Rail, Tablet Slide	2
3	46.5383.RH.XX	Strive Arm Rest, Bottom Right	1	22	44.0044	Bracket, Wood Tablet Slide Rail Stop	4
4	12.0696	Screw, #8 x 5/8 TX OV HD T-B	4	23	T15P.LXX	Tablet, Laminate with Lacquer Edge	1
5	46.5384.LH.XX	Strive Arm Rest, Top Left	1	24	47.1001.BL	Casting, 4-Leg Frame	1
6	46.5383.RH.XX	Strive Arm Rest, Bottom Left	1	25	47.1009	Bushing, Seat Swivel	1
7	47.1035	Bushing, Seat Swivel with Spacer and Bumpers	1	26	47.1014.XX	Weldment, 4-Leg Frame	1
8	12.2205	Screw, 5/16-18 x 3.25 LG	4	27	47.1014.BK.XX	Weldment, Chair Bookrack Frame	1
9	27.1002.BL	Casting, Upper Bearing Mount	1	28	47.1014.CP.XX	Weldment, Chair Bookrack and Cup Holder Frame	1
10	47.1010	Bushing, Rotate Around Seat	2	29	12.2206	Washer, 5/16 x 1.0 O.D.	1
11	47.1012.XX	Weldment, Tablet Arm Learn2	1	30	12.2207	Bolt, 5/16-18 x 0.5, Hex Head	1
12	47.1041.BL	Bushing, Bottom 2 Piece Arm Tube	1	31	12.1154	Nut, 5/16-18 Flange Centerlock	4
13	47.1038.BL	Bushing, Top 2 Piece Arm Tube	1	32	46.0386.BL	Bushing, Caster	4
14	47.1000.A.BL	Casting, Tablet Arm Gusset	1	33	09.0440.BL	Caster, 60mm Diameter Carpet	4
15	12.2200	Washer, 3/8 Hardened for Thrust Washer Stack Fastener	2		09.0441.BL	Caster, 60mm Diameter Hard Floor	4
16	12.2202	Washer, 3/8 Solid Bronze Thrust Fastener	1	34	10.0150	Bell Glide	4
17	12.2204	Screw, 3/8 - 16 x 1.75 Hex Serrated Flange Head Machine Fastener	1	35	47.1042.XX	Weldment, Flat Bookrack	1
18	47.1007	Carriage, Tablet Arm Gusset	2	36	47.1014.FB	Weldment, Flat Bookrack Chair Frame	1
19	12.2203	Screw, #8-32 x 3/8 Tri-Lobe	6	37	12.0023.TM	Nut, #10-24 Hex w/ Lock Washer	4

