

# Technical Specifications ■

## Darwin® Wood Casegoods Collection

7/22/10

### Specifications

Worksurfaces and sides are 1¼" thick; backs, modesty panels and fronts are ¾" thick. Pedestals (desks and credenzas) are not handed and can be installed either on left or right. Furniture is assembled using Minifix quick connectors. Tops feature solid hardwood edges with mitred corners. Tops have a 1" overhang all around, unless "flush sides" is specified. Levelers allow up to ¾" height adjustment and are adjustable from the inside on storage modules. All dimensions shown are nominal. Approximate weights and volumes relate to crated items and are indicated for shipping purposes.

#### A. Veneer

Genuine veneers, selectively book matched on all surfaces to provide proper consistency.

#### B. Drawer Construction

Four-corner dovetailed box and file drawers are built as separate units for strength and durability. All drawers are finished with a 7-step catalyzed varnish finish to seal the grain and provide a smooth inner surface. Drawers are built with 7/16" wood sides and 3/16" wood bottoms. Drawer front is book matched veneer and is attached separately.

#### C. Drawer Suspension

File drawers utilize a heavy-duty full extension metal ball-bearing slide for smooth operation. Box drawers operate on full extension slides, allowing total access to the drawer.

#### D. Finish Color Matching

Different wood species offer unique texture and grain. Minor variations in finish color may occur due to the natural characteristics of wood. All material used in every product is carefully selected, ensuring an excellent color and finish.

#### E. File Drawers

Letter-width file drawers and credenzas accommodate letter or legal filing.

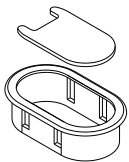
#### F. Finishing Techniques

A 7-step, catalyzed varnish process utilizes the latest in technology. The superior strength of the finish provides enhanced stain and mar resistance for lasting beauty and easy maintenance.

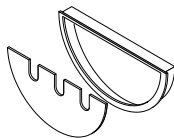
Careful attention is paid to the selection, preparation, staining and shading processes. However, due to the natural characteristics of real wood – grain, texture and local density – certain variations will occur from one piece to another, emphasizing the wood's natural beauty.

#### G. Grommets

Worksurface grommets must be specified separately. Hutch (Half-moon) grommets are included. Grommet kits are factory installed.



Oval grommet  
(worksurfaces)

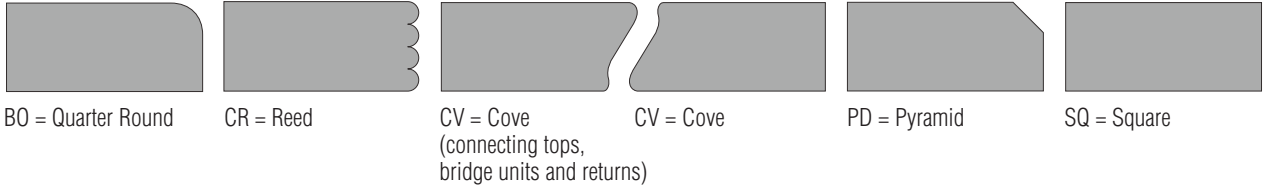


Half-moon grommet  
(hutch and side panels)

E = Grommet  
NE = No Grommet



**H. Choice of Edges**



**I. Choice of Finishes**

- Z213 = Warm Maple on Maple
- Z220 = Honey on Beech
- Z203 = English on Cherry
- Z204 = Cinnamon on Cherry
- Z214 = Cocoa on Walnut

**J. Choice of Pulls**

- (Pedestals, freestanding storage units)
- 6 = Black
  - 7 = Satin
  - 8 = Chrome



Black metal pull (6) shown standard. Satin (7) or Chrome (8) finishes available, at no further upcharge. Please specify.

**K. Keying Options**

- The following key options are available at the end of the model strings:
- KN = No keys (use as default for non-lockable units)
  - KS = Key standard
  - KA = Key alike (note room numbers on order)

**Sample Order**

Product Code	Edge	Finish	Pull	Worksurface Grommet	Keying Option
<b>KA1404272</b>	<b>PD</b>	<b>Z220</b>	<b>6</b>	<b>E</b>	<b>KS</b>