

VerreTM and PinicleTM

VERRE

Features

- 5 year product warranty
- ADA compliant
- 1/4" thick formed metal side plates
- Solid metal bar trim
- 3/16" thick tempered glass diffuser with pencil ground edges, sandblasted front and cased white back
- Oven cured no VOC acrylic powder coat for painted finishes; oven cured low VOC clear coat on metal finishes
- Optional specialty diffuser materials available, including some Lumicor[®] recyclable resin materials
- Easy tool-less relamping
- Fluorescent or incandescent sources
- MRI option enables use in magnetic resonance imaging (MRI) rooms
- High power factor electronic ballast (fluorescent)
- Mounts to standard electrical junction box (by others) with provided hardware
- XEM option requires replacement of junction box with proprietary junction box (included with XEM option). The XEM junction box is available as a ship-ahead component for rough-in if needed
- ETL listed to UL standards (US and Canada) for indoor damp locations. Not recommended for exterior applications

Suggested Variations

- Custom color or material
- Fused circuit protection



PINICLE

Features

- 5 year product warranty
- Cast aluminum backplate
- Cast aluminum trim
- Oven cured no VOC acrylic powder coat for painted finishes; oven cured low VOC clear coat on metal finishes
- White glass diffuser
- Easy tool-less relamping
- Fluorescent or incandescent sources
- High power factor electronic ballast (fluorescent)
- Mounts to standard electrical junction box (by others) with provided hardware
- ETL listed to UL standards (US and Canada) for indoor damp locations. Not recommended for exterior applications

Suggested Variations

- Fluorescent sources up to (1) 26w CF
- Fused circuit protection
- Can be constructed of non-ferrous materials for use in magnetic resonance imaging (MRI) rooms



COMPANIONS

Tusk



Wall

Page 32

Ovation



Ceiling

Page 228

Order Code Example

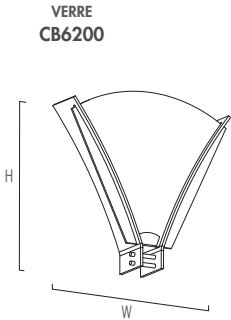
CB6200	—	1F27 (MVOLT)	—	BA	—	AR	—	REM
Model Number		Source		Finish		Diffuser Options		Options

VERRE CB6200 ADA		1F27 1N60T10	(Painted) BA CUA BB OBA BBA PRA BCA RBA BZA SNA	Diffuser is etched glass if no option is selected		• ABA • AR • PP • SL • TT	DCC • MRI RB REM XEM XPS
PINICLE CB5016		1LF13 1N100	(Painted) BA CUA BBA OBA BBA PRA BZA RBA SNA				DCC REM

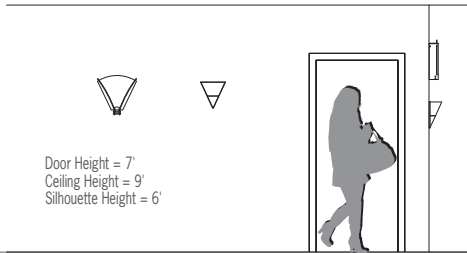
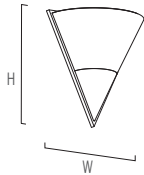
Dimensions		
W	17"	(432 mm)
H	17-1/8"	(435 mm)
D	4"	(102 mm)
MC	7-1/8"	(181 mm)

W	10-7/8"	(276 mm)
H	11-3/8"	(289 mm)
D	5-3/4"	(146 mm)
MC	5-3/8"	(137 mm)

Line Drawings	
Depth is measured from wall to front of fixture Mounting Center is measured from top of fixture to center of junction box	
W = Width	H = Height
D = Depth	MC = Mounting Center



PINICLE
CB5016



Abbreviation Key
• Indicated Finish or Option is not available with XPS

Source (Voltage)	
Specify Voltage or MVOLT MVOLT fixture accepts 120 through 277 input voltage	
F27	27w long twin tube, 2G11 base, FLR (MVOLT; 347V)
LF13	13w twin tube 4-pin, 2GX7 base, FLR (MVOLT)
N40T10	40w T-10, medium base, INC (120V)
N60T10	60w T-10, medium base, INC (120V)
N100	100w A-19, medium base, INC (120V)

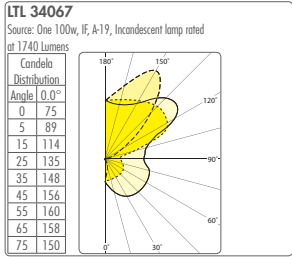
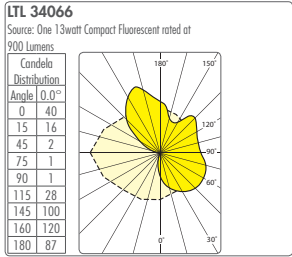
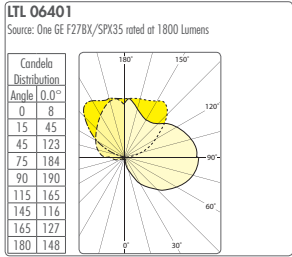
Finishes (see inside back cover)	
(Painted) Color Code Required - see color chart	
BA	Brushed Aluminum
BB	Brushed Brass
BBA	Brushed Brass Alternative
BCA	Brushed Chrome Alternative
BZA	Brushed Bronze Alternative
CUA	Brushed Copper Alternative
OBA	Oil-Rubbed Bronze Alternative
PRA	Pewter Alternative
RBA	Rustic Brass Alternative
SNA	Satin Nickel Alternative

Diffuser Options (see inside back cover)	
Diffuser is etched glass unless other diffuser option is selected Downwatt required for 1N60T10 to 1N40T10 with any of these options	

• ABA	Hand Painted Alabaster Alternative
• AR	Arctic Crush Lumicor®
• PP	Paper Leaf Lumicor®
• SL	Silver Spun Lumicor®
• TT	Tiger Taipei Lumicor®
Options	
DCC	Damp clear coat for metal finishes (required for 5 year warranty when used in damp locations)
• MRI	MRI room application, incandescent only
RB	Pre-ship recessed components (XEM junction box)
REM	Remote emergency battery pack for fluorescent, not available with 347V
XEM	Emergency battery pack mounted in provided recessed box for fluorescent (replaces standard junction box), not available with 347V
XPS	Express 10 day shipment

Photometrics and 3D Modeling		
Complete BIM, Sketchup, and Photometric files for these models can be downloaded from www.visalighting.com		

IES File Number	LER	Report
CB6200-1F27	36	06401
CB5016-1LF13	45	34066
CB5016-1N100	15	34067



Finishes and Materials

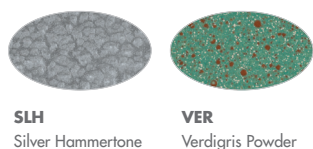
Specify color code when ordering.
Individual paint and finish samples
are available upon request.

Painted Finishes (standard)

Acrylic Powder Coat



Polyurethane Powder Coat



Polyester Powder Coat



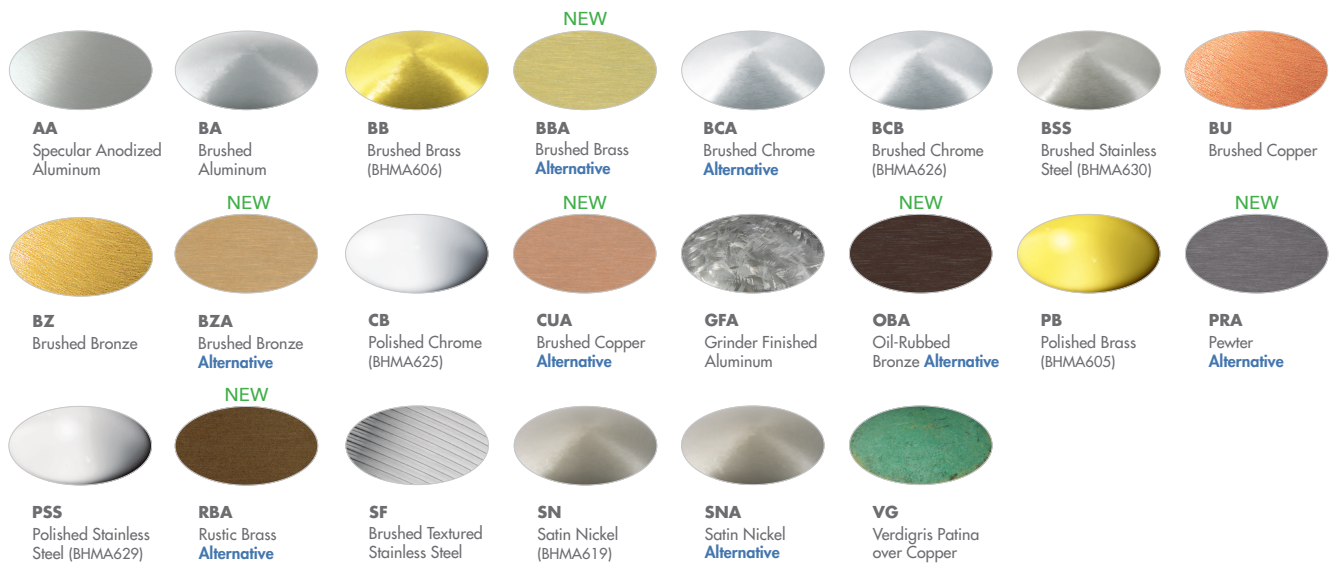
POWDER COAT PAINTED FINISHES

Powder coating eliminates runs, drips and sags common with liquid paint finishes. It is significantly more durable than conventional paints and is extremely resistant to chips, abrasions, heat up to 400° F, UV light, fuel and chemicals. All of Visa Lighting's colored paint options are powder coat, reducing its overall environmental impact while maintaining the Visa Lighting standard of quality. There are no solvents or hazardous materials used in the process. Paint finishes are blended specifically for Visa Lighting and are powder comb tested to ensure 1-2 mil on interior products for durability and 2-3 mil on exterior products to provide extra protection for outdoor architectural spaces. Antimicrobial coating is standard on patient care products.

RAL Classics, the most recognized samples set, a collection of 210 colors used widely in architecture. Visa Lighting's color palette features RAL colors with a satin surface finish. Additional RAL Classic series colors are available at a slight premium. Custom color matching is also available. Visa's powders are exceptionally durable and corrosion resistant, with excellent chemical, stain and scratch resistance. They also possess superior over-bake resistance and a 2H hardness level. The powders are reclaimable, safe, and environmentally friendly.

For accurate metal matching use BHMA standard or request finish samples. Individual paint and finish samples are available upon request.

Metal Finishes (premium options)



METAL FINISHES

Architecture, like light, is a balance of art and science. Proper metal finishing is the essence of art and old world craftsmanship. Visa Lighting's metal finishes are spun, polished and finished by artisans in our Milwaukee, Wisconsin facility. Trust in quality allows Visa Lighting to extend a five year limited warranty on product finishes; guaranteeing the craftsmanship, beauty and durability of each product. The **DCC** option (Damp Clear Coat) is required for 5 year warranty when used in damp locations.

ANSI/BHMA MATERIAL FINISH STANDARDS

Visa recognizes the use of ANSI/BHMA standard. The BHMA reference number is provided below the finish sample. All Visa finishes are grade level 1. Visa also utilizes this standard as a means for specifiers to communicate a desired surface treatment, should one be desired, that is not offered as a standard finish.

Other Materials (premium options)

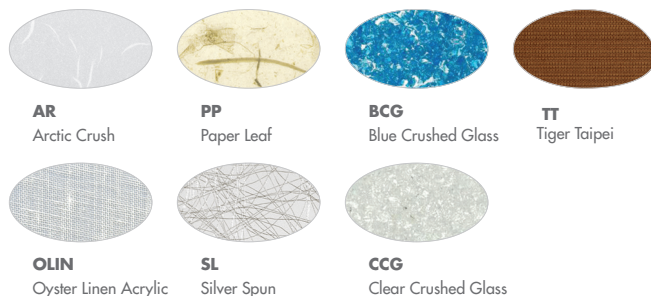
Standard Matte Acrylic Diffuser Finish

All luminous acrylic diffusers used indoors include a matte finish to enhance softness of illumination and to produce a more glass-like appearance. This scratch resistant surface is specifically designed to be durable and easily cleaned using mild cleansers during routine building maintenance.

Lumicor

Lumicor® Lens Options —

Dedicated to providing innovative products and solutions, Visa Lighting includes seven resin material options for lensing. This recyclable material transforms the personality of classic Visa Lighting products. Additional material options are available through our variations team.



Wood



Wood finishes are unfinished for field staining

Alabaster

Alabaster Alternative (ABA) —

ABA acrylics are hand painted by local artists. Multilayered paint over an acrylic substrate produces a luminous diffuser with the character and natural appearance of alabaster at a fraction of the cost and with less fixture weight. This finish can be applied to designs that cannot be produced in real marble materials.



ABA
Hand-Painted Alabaster Alternative

SA
Natural Spanish Alabaster

Colored Acrylic



GIA
Glacier Ice Acrylic

OKA
Orange Krush Acrylic

WMA
White Mist Acrylic

Glass



GD
Opal White Glass

PGD
Patterned Glass Diffuser