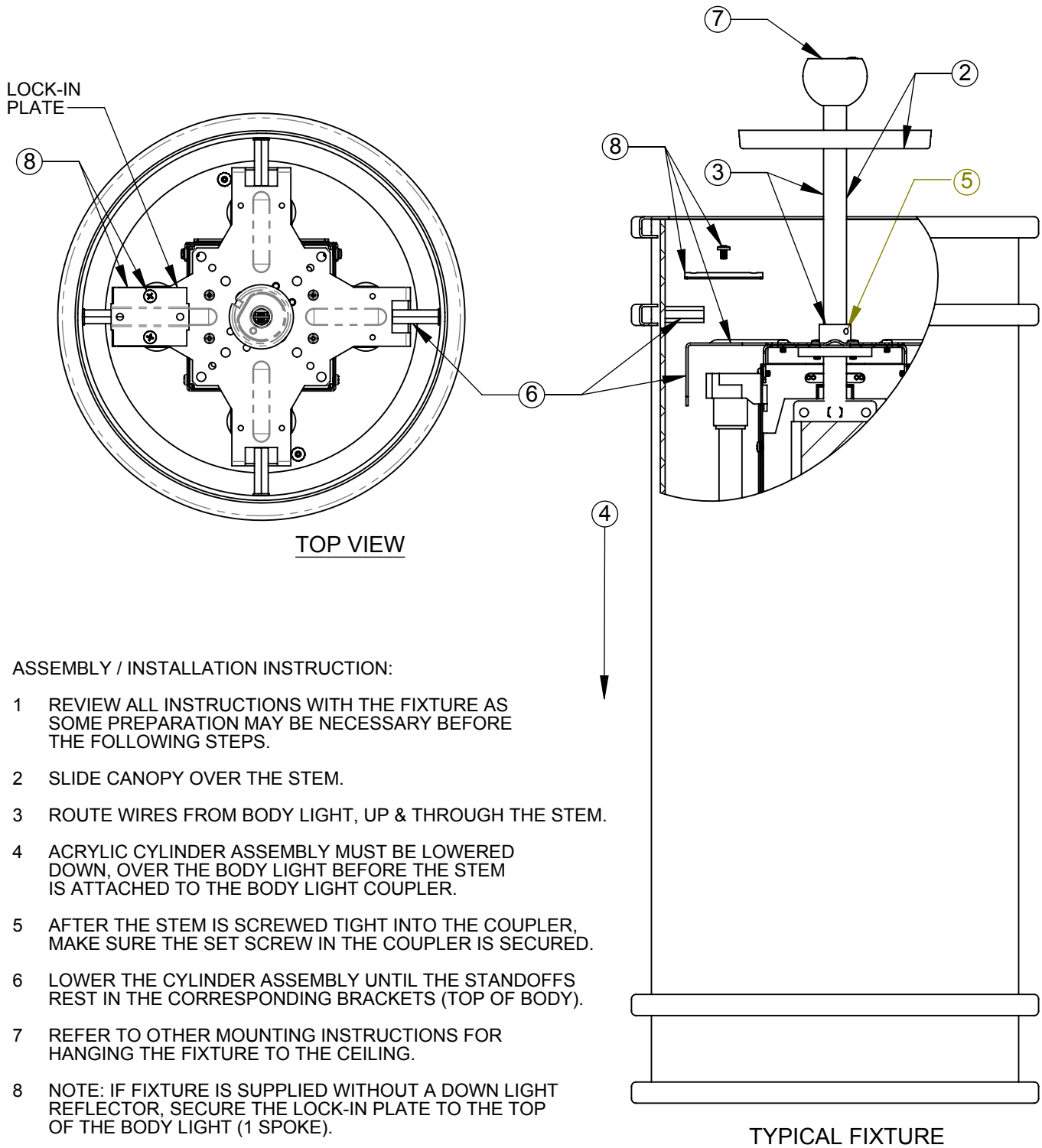


INSTALLATION INSTRUCTIONS

Model: **CP - VARIOUS**
Fixture Family: **CYLINDER PENDANTS**
Document Description: Installation Instructions for
Cylinder Series Luminaires

1717 West Civic Drive Milwaukee, WI 53209
414-354-6600
Design Modification Rights Reserved
© Visa Lighting



ASSEMBLY / INSTALLATION INSTRUCTION:

- 1 REVIEW ALL INSTRUCTIONS WITH THE FIXTURE AS SOME PREPARATION MAY BE NECESSARY BEFORE THE FOLLOWING STEPS.
- 2 SLIDE CANOPY OVER THE STEM.
- 3 ROUTE WIRES FROM BODY LIGHT, UP & THROUGH THE STEM.
- 4 ACRYLIC CYLINDER ASSEMBLY MUST BE LOWERED DOWN, OVER THE BODY LIGHT BEFORE THE STEM IS ATTACHED TO THE BODY LIGHT COUPLER.
- 5 AFTER THE STEM IS SCREWED TIGHT INTO THE COUPLER, MAKE SURE THE SET SCREW IN THE COUPLER IS SECURED.
- 6 LOWER THE CYLINDER ASSEMBLY UNTIL THE STANDOFFS REST IN THE CORRESPONDING BRACKETS (TOP OF BODY).
- 7 REFER TO OTHER MOUNTING INSTRUCTIONS FOR HANGING THE FIXTURE TO THE CEILING.
- 8 NOTE: IF FIXTURE IS SUPPLIED WITHOUT A DOWN LIGHT REFLECTOR, SECURE THE LOCK-IN PLATE TO THE TOP OF THE BODY LIGHT (1 SPOKE).

Drawing: 760224XX

Rev: D

Sheet: 1 of 1

Eng: CGA

Date Drawn: 01/25/2013



When using electrical equipment, basic safety precautions should always be followed, including the following:

- Read all instructions carefully before installing and save for future use.
- Make sure all connections are in accordance with the National Electrical Code and local regulations.
- To avoid possible electric shock, be sure the power supply is turned off before servicing or installing the fixture.
- Service should be performed by qualified personnel.

• These instructions may not cover all details or variations. If additional information is needed, please contact Visa Lighting.