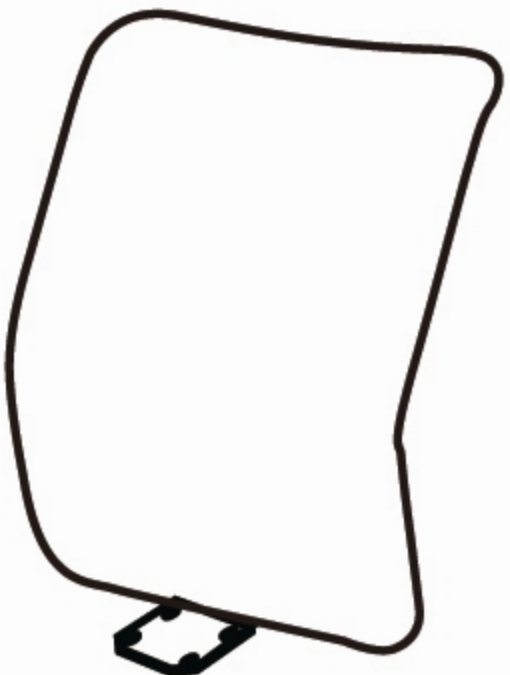

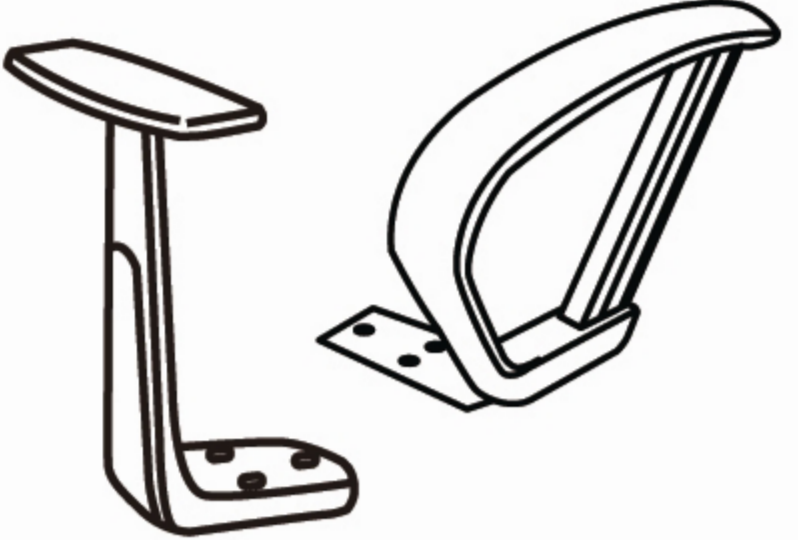
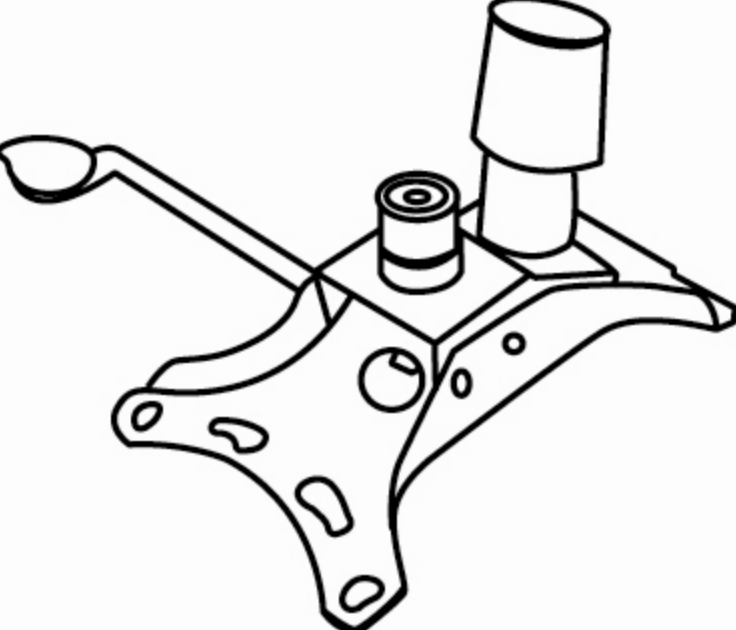



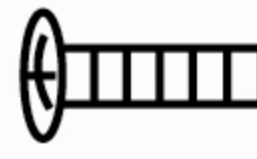

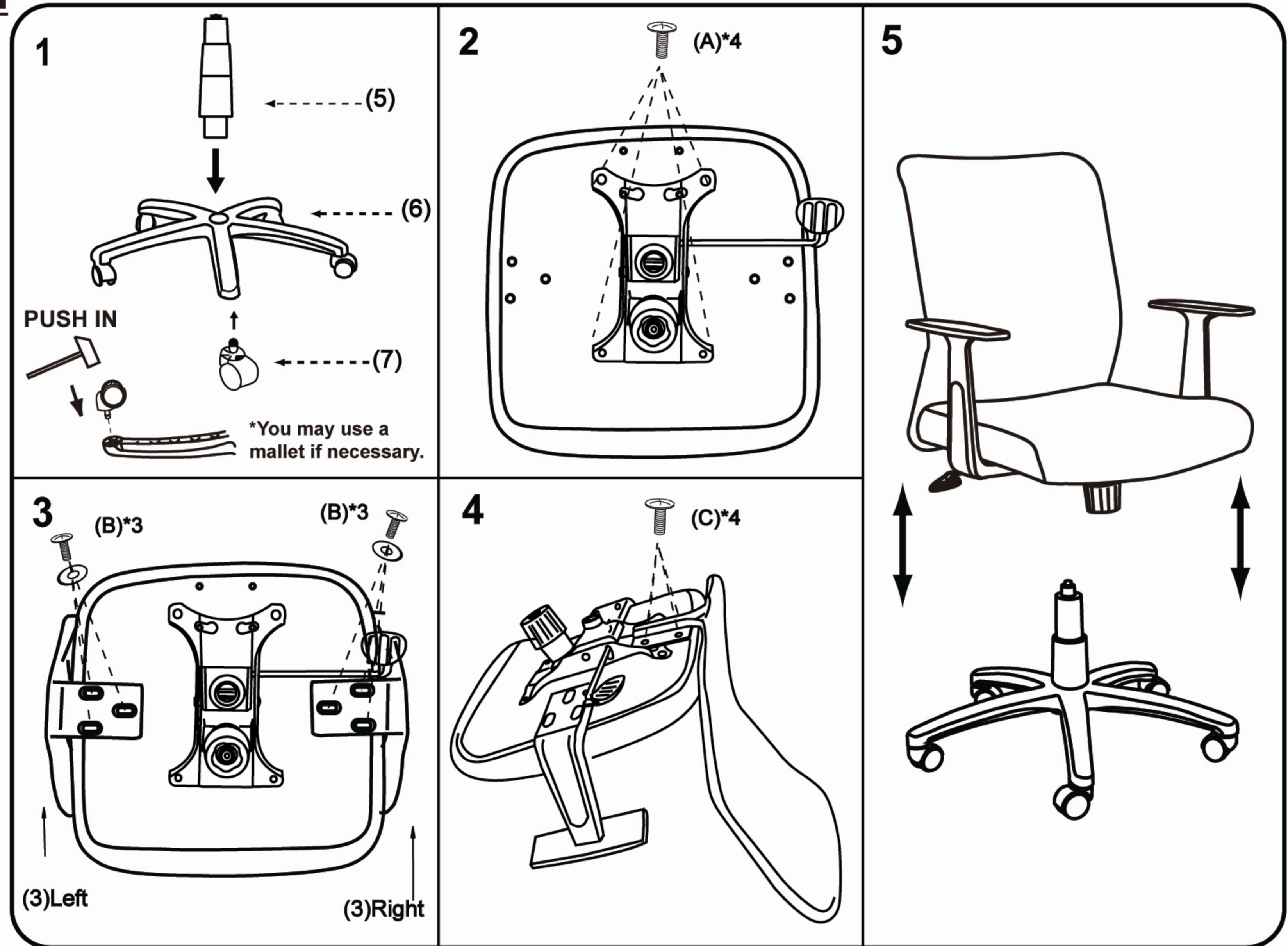


Please unscrew all hardware from cushion before assembly.
Por favor de destornillar todos los tornillos del cojín antes de ensamblar la silla.

MODEL: B6105 B6106 B6107

(1)x1	(2)x1	(3)x1 (I)x1 (D)
		
Back Cushion	Seat Cushion	Left- Arm Right- Arm
(4)x 1	(5)x1	(6)x1
		
Mechanism	Gas Lift	Nylon Base
(7)x 5	<p>Insert and loosely tighten all screws. When assembly is completed, fully tighten all screws before using. This chair is only intended for sitting. Any other use will void the warranty.</p>	
		
Casters		

- (A)x4  M8*22 MECHANISM SCREW
- (B)x6  M6*30 ARM SCREW
- (C)x4  M8*26 L-BAR SCREW



Customer Service Hotline: 1-800-593-1888
For further assembly instructions,
please visit our website at www.boschair.com