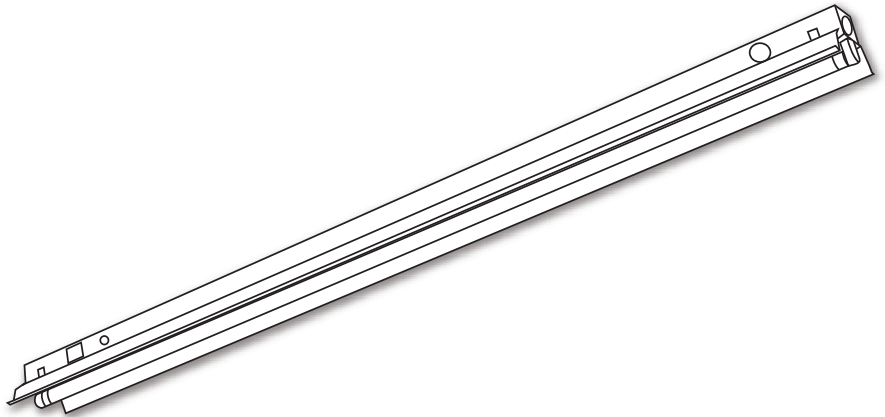


MIN SERIES PREMIUM FLUORESCENT NARROW INDUSTRIALS

Job Name	
Catalog Number	
Notes	Type

Available with LED Express



application

- A narrow multi-function industrial for any application requiring reliable and efficient compact light sources
- Able to be surface, pendant or chain mounted individually or in continuous rows
- Available in multiple lengths, 1 or 2 light standard or high output T5, 1 light T8 fluorescent

finish

- Prior to painting, all metal parts are treated with a multi-stage phosphate bonding process to ensure adhesion and inhibit rusting
- Painted with a lighting grade baked white enamel, having a reflectance factor exceeding 87% for premium quality and durability

construction

- The MIN series is a premium grade fluorescent industrial specifically designed for long-term, dependable service
- Features durable steel bodies, quality paint finishes and superior electrical components
- Die formed cold rolled steel for strength and uniformity
- Heavy-duty reflectors securely attached to body
- Aligner clips are available to keep reflectors aligned in continuous row applications
- Ample knockouts are provided on back and sides for convenient, versatile installation
- Numerous knockouts are provided for switch options, cord and plug options or convenience outlets
- All fixtures are U.L. listed and IBEW union made

electrical

- All electrical components are U.L. listed
- Electronic Class P, thermally protected ballasts standard

LaMar Lighting assumes no responsibility for misapplication of fixtures



**LaMar
Lighting**
Company, Inc.

ordering guide

Note: Tandem units contain double the amount of lamps shown

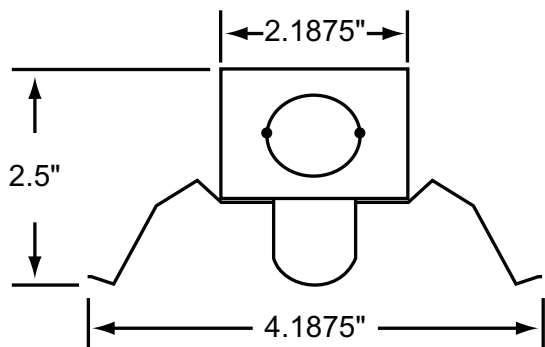
MIN
SERIES
PREMIUM
FLUORESCENT NARROW
INDUSTRIALS

MIN						
SERIES		LAMP TYPE	TANDEM	BALLAST TYPE	VOLTAGE	GENERAL OPTIONS
MIN	NO. LAMPS		T		1 - 120V U - Universal 120-277V	
	1	17 - F17T8		C8 - CEE listed high performance T8 (instant start)		LW - Low watt ballast (T8 only)
	2	25 - F25T8		CP8 - CEE listed high performance T8 (program start ballast)		EM - Emergency pack, 1 lamp 90 min. up to 500 lu.
		32 - F32T8		E5 - Electronic T5		PS - Push switch (120V only)
		14 - F14T5		H5 - Electronic T5HO		PC - Pull chain (120V only)
		24 - F24T5HO		E8 - Electronic T8		TS - Turn switch (120V only)
		21 - F21T5		ED - Electronic dimming (consult factory)		
		39 - F39T5HO				
		28 - F28T5				
		54 - F54T5HO				

dimensional data

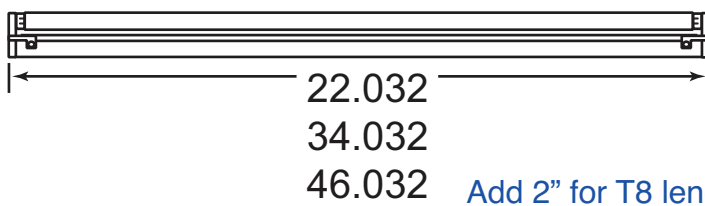
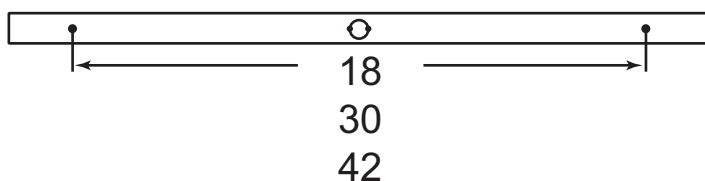
NOTE: SPECIFICATIONS AND DIMENSIONAL DATA ARE SUBJECT TO CHANGE WITHOUT NOTICE

cross sections



back knockout plans and lengths

T5 Dimensions



accessories

AL Aligner clips

LAMP OPTIONS

13 T5/T8 841K
16 T5/T8 835K
11 T5/T8 830K

NOTE: In order to achieve rated lamp life, fixtures controlled by motion sensors should be ordered with programmed start ballasts when available and minimum time delay should be set to 15 minutes - Consult Factory

Multiple cord options are available - consult factory

Consult factory for additional options not shown or listed

Available with LED Express



LaMar Lighting assumes no responsibility for misapplication of fixtures

Revised
11/14

LAMAR LIGHTING 485 Smith Street, Farmingdale, NY 11735 • Tel (631) 777-7700
Fax (631) 777-7705 • Outside NY (800) 724-7743 • www.lamarlighting.com

Scan QR code
to be directed
to our
home page!



LaMar
Lighting
Company, Inc.