

AST SERIES

ADJUSTABLE LOW PROFILE STAGGER STRIP

Available with LED Express



Job Name

Catalog Number

Notes

Type

features

- Adjustable low profile T5 or T8 fluorescent stagger strip fixture with integral ballast
- Sliding section locks in place with easy-to-use set screw mechanism
- Much more versatile than standard stagger strip
- Stagger can extend to almost 50 % of its full length
- Available in 2 lamp configuration only for 2-ft., 3-ft. or 4-ft. T5 or T8 lamps; see ordering information on back

finish

- Prior to painting, all metal parts are treated with a multi-stage phosphate bonding process to ensure adhesion and inhibit rusting
- Painted with a lighting grade baked white enamel, having a reflectance factor exceeding 87% for premium quality and durability

construction

- The AST series is a premium grade fluorescent luminaire specifically designed for long-term, dependable service with the benefits of adjustable length lighting
- Die formed from cold rolled steel for strength and uniformity
- Easy mounting through pre-punched holes in the steel housing
- Optional symmetrical or assymetrical reflectors
- All fixtures are U.L. listed and IBEW union made

electrical

- All electrical components are U.L. listed
- Electronic Class P, thermally protected ballasts standard
- Some units may require 2 ballasts due to size limitations

LaMar Lighting assumes no responsibility for misapplication of fixtures



LaMar
Lighting
Company, Inc.

ordering guide

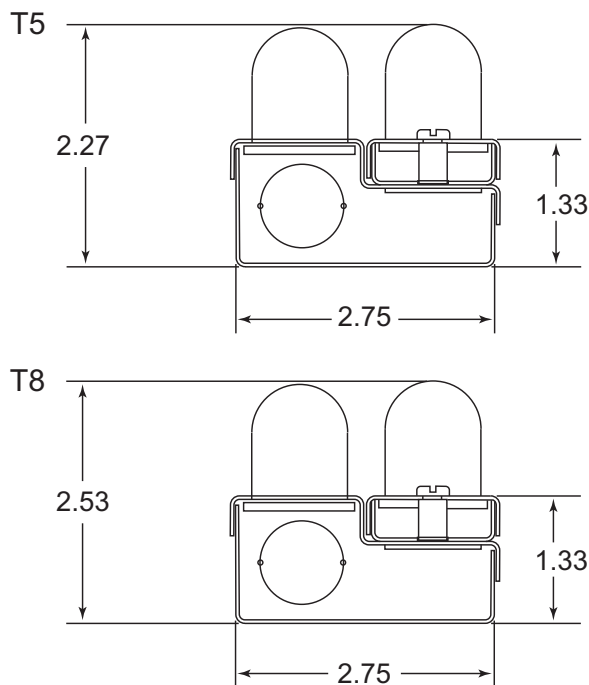
AST SERIES ARCHITECTURAL ADJUSTABLE LOW PROFILE STAGGER

SERIES	NO. LAMPS	LAMP TYPE	BALLAST TYPE	VOLTAGE	GENERAL OPTIONS
AST	2	17 - F17T8 25 - F25T8 32 - F32T8 14 - F14T5 24 - F24T5HO 21 - F21T5 39 - F39T5HO 28 - F28T5 54 - F54T5HO	C8 - CEE listed high performance T8 (instant start) CP8 - CEE listed high performance T8 (program start ballast) E5 - Electronic T5 H5 - Electronic T5HO E8 - Electronic T8	1 - 120V U - Universal 120-277V	LW - Low watt ballast (T8 only) 2C - 2 Circuit (consult factory)

dimensional data

NOTE: SPECIFICATIONS AND DIMENSIONAL DATA ARE SUBJECT TO CHANGE WITHOUT NOTICE

cross sections



accessories

LAMP OPTIONS

13	T5/T8 841K
16	T5/T8 835K
11	T5/T8 830K

NOTE: In order to achieve rated lamp life, fixtures controlled by motion sensors should be ordered with programmed start ballasts when available and minimum time delay should be set to 15 minutes - Consult Factory

Consult factory for dimming options and additional options not shown or listed

Available with LED Express



AST Sliding Stagger Lengths

Ballast	Minimum	Maximum
T5	22 5/8"	31 7/16"
T5	34 5/8"	49 7/16"
T5	46 5/16"	67 7/16"
T8	24 5/8"	34 13/16"
T8	36 5/8"	52 13/16"
T8	48 5/8"	70 13/16"

LaMar Lighting assumes no responsibility for misapplication of fixtures

Revised
11/14

LAMAR LIGHTING 485 Smith Street, Farmingdale, NY 11735 • Tel (631) 777-7700
Fax (631) 777-7705 • Outside NY (800) 724-7743 • www.lamarlighting.com

Scan QR code
to be directed
to our
home page!



**LaMar
Lighting**
Company, Inc.