

FINELITE

Series 11 Technical Sheet



Date

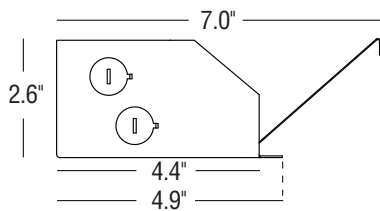
Project

Type

Comments

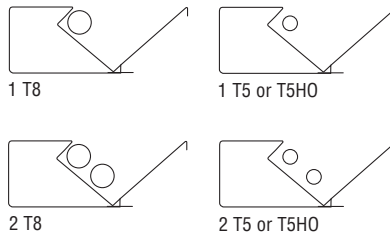
DESCRIPTION

Finelite Series 11 is a unique high performance fixture, perfect for cove ceilings where soft, even illumination is needed. Available in 1 or 2 lamp, T8, T5, or T5HO lamps, Series 11 comes in 3', 4' and 8' lengths.



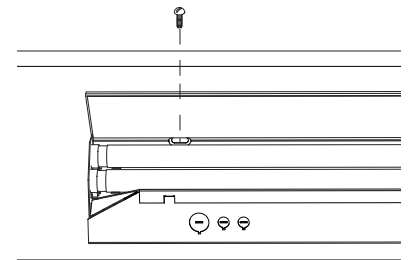
DIMENSIONS:

Series 11 is designed to fit into an architectural cove with a minimum width of 7.0", and a minimum height of 2.8".



LAMPING:

Series 11 is available with 1 or 2 T8, T5, or T5HO lamps. Standard 96W reflector system, or optional Extended Performance reflector.

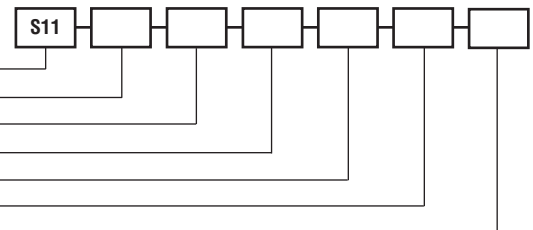


MOUNTING:

Mounting without removing reflector makes installation fast and easy. Mounts directly to architectural cove with two screws per 4' section.

ORDERING GUIDE

Sample Number: S11 - 32' - 2T8 - SC - 96W - 277 - 0.88



- Finelite **Series 11**
- Run length (3', 4', 8' multiples standard)
- Number of lamps in cross section (1, 2, T8, T5 or T5HO)
- Circuiting (SC-single circuit, DC-dual circuit)
- Reflector system (96W, EP)
- Voltage (120, 277, 347V)
- Ballast factor (Standard 0.88 for T8 lamps, 1.0 for T5 or T5HO)

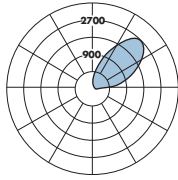
FINELITE

Series 11 Technical Sheet

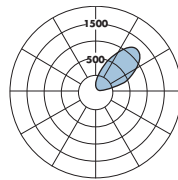
PHOTOMETRY



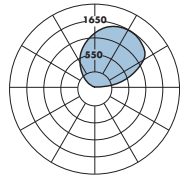
S11: 1 T5HO-EP
 Efficiency: 84.5%
 Peak Candela Value: 2670@ 135°
 LSI Report: 52675



S11: 1 T8-EP
 Efficiency: 76.9%
 Peak Candela Value: 1340@ 135°
 LSI Report: 52674



S11: 2 T8-96W
 Efficiency: 77.5%
 Peak Candela Value: 1645@ 155°
 LSI Report: 52671



CANDLEPOWER SUMMARY						
	0.0	45.0	90.0	135.0	180.0	Flux
90	0	0	0	0	0	
95	208	253	30	0	0	132
105	1039	1035	133	0	0	479
115	1764	1637	247	0	0	722
125	2317	2100	361	0	0	821
135	2670	2126	465	73	0	775
145	2492	1852	556	188	88	607
155	1971	1448	630	318	231	404
165	1329	1088	680	449	391	218
175	868	819	705	592	557	68
180	706	706	706	706	706	

CANDLEPOWER SUMMARY						
	0.0	45.0	90.0	135.0	180.0	Flux
90	0	0	0	0	0	
95	111	121	12	0	0	64
105	472	491	60	1	0	227
115	857	818	115	22	3	358
125	1185	1037	173	60	36	426
135	1340	1040	230	109	81	405
145	1244	881	279	161	134	316
155	944	704	318	216	190	209
165	654	537	346	267	248	114
175	424	404	359	318	306	35
180	359	359	359	359	359	

CANDLEPOWER SUMMARY						
	0.0	45.0	90.0	135.0	180.0	Flux
90	0	0	0	0	0	
95	142	145	54	22	21	99
105	636	605	317	92	81	361
115	1034	993	562	194	159	576
125	1397	1219	790	343	275	715
135	1537	1403	991	540	430	757
145	1628	1507	1165	765	638	717
155	1645	1564	1299	982	875	590
165	1613	1566	1391	1186	1101	389
175	1504	1493	1435	1362	1329	136
180	1433	1433	1433	1433	1433	

— Refer to www.finelite.com for additional photometry and product information.

SPECIFICATIONS

CONSTRUCTION: Body is 20-gauge steel. All components are hard- tooled to tolerances of 0.010".

REFLECTORS: Standard painted 20-gauge steel, 96% reflective white (96W). Optional: Extended performance (EP) reflector system (available in 1T8 lamp configurations only).

ACCESSORY: Optional Dust Cover, clear acrylic for use with T8 lamps. NOTE: Will significantly impact light level performance. Consult Factory.

CORNER: Optional corner harness, 0.5" flex conduit. Contact factory.

ELECTRICAL: 120 or 277V prewired. Fixture and electrical components are UL/C-UL listed and fixture will bear UL/C-UL labels. Optional Adders: 347V prewired, dual circuit, emergency circuits, emergency battery packs.

LAMPING: Series 11 is available in 1-, or 2-lamp T8, T5 or T5HO cross sections.

BALLAST: Electronic instant-start ballast <10% THD, 0.88 BF standard for T8 lamps. Electronic rapid-start ballasts <10% THD, 1.0 BF standard for T5/T5HO lamps. Optional adders: rapid-start ballasts (standard for T5/T5HO), 347V, emergency battery packs, dimming ballasts (controls by others).

MOUNTING OPTIONS: Fixture mounts directly to architectural cove.

FEED: Standard 14 gauge wire feed extends from back of fixture.

LENGTHS: 3', 4', and 8' section lengths can be combined to make longer runs. Contact factory for additional lengths.

WEIGHT: Fixture weight = 2.5 lb/ft.

LABELS: Fixture and electrical components are ETL listed conforming to UL 1598 in the U.S.A., and Canada; ETL listed to certified CAN/CSA C22.2 No. 250.0. Fixtures will bear ETL labels.