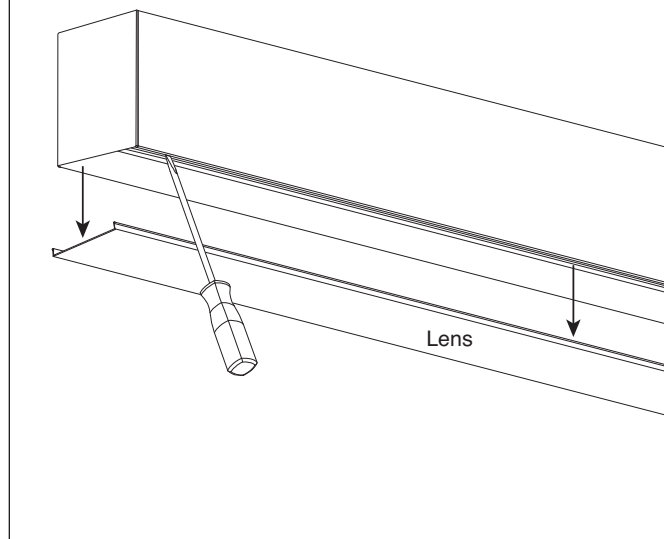
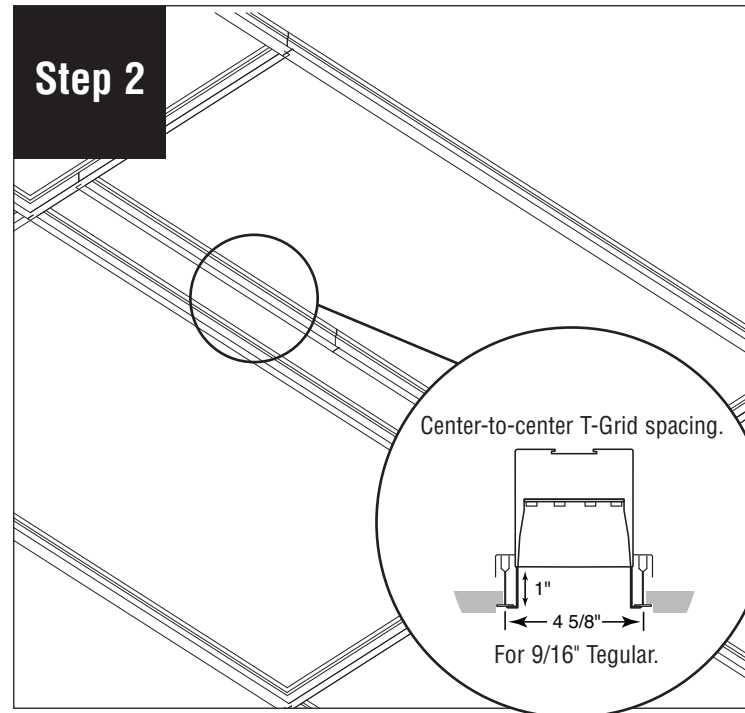


FINELITE

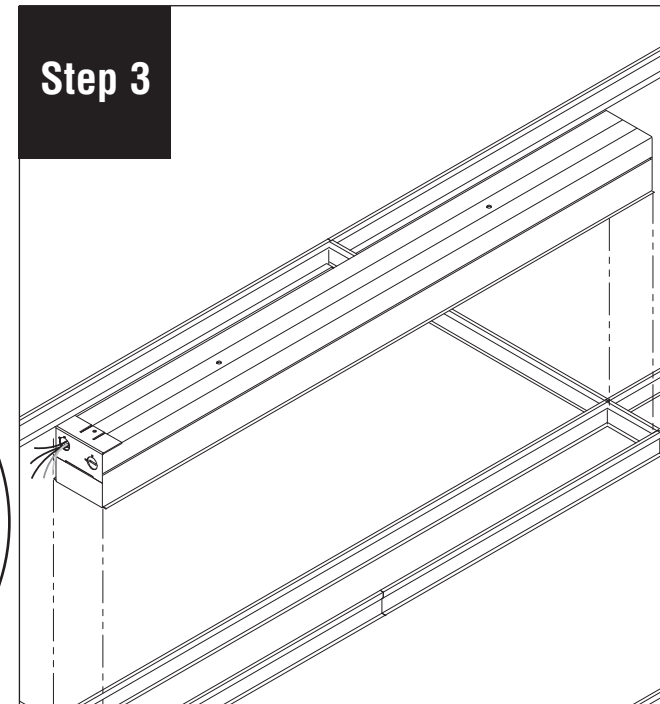
HP-4 Recessed with Regressed Lens 9/16" Tegular Starter/Independent Installation Instructions

Step 1

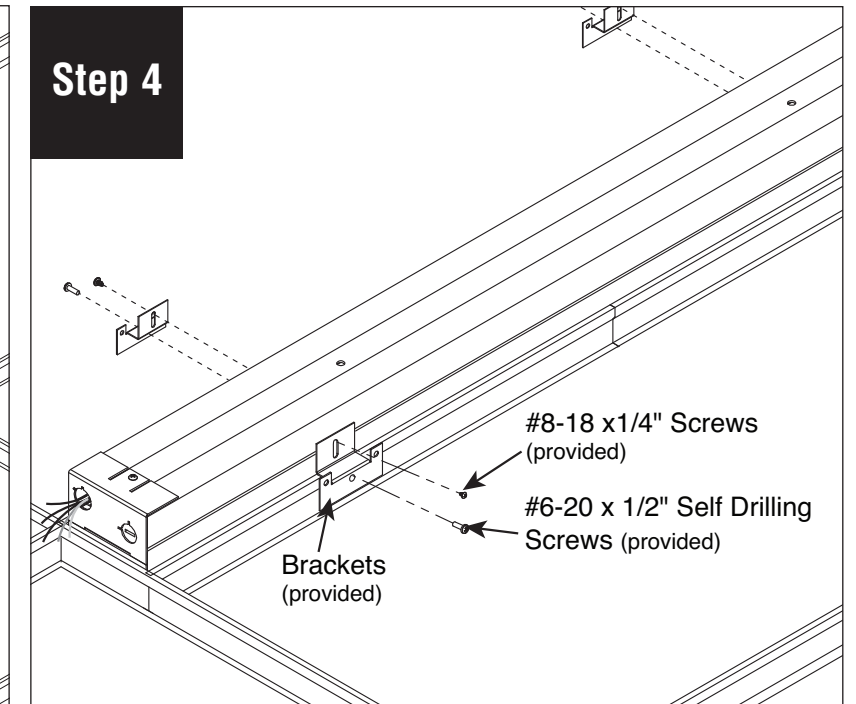
Remove lens and set aside to prevent it from getting dirty or damaged.

Step 2

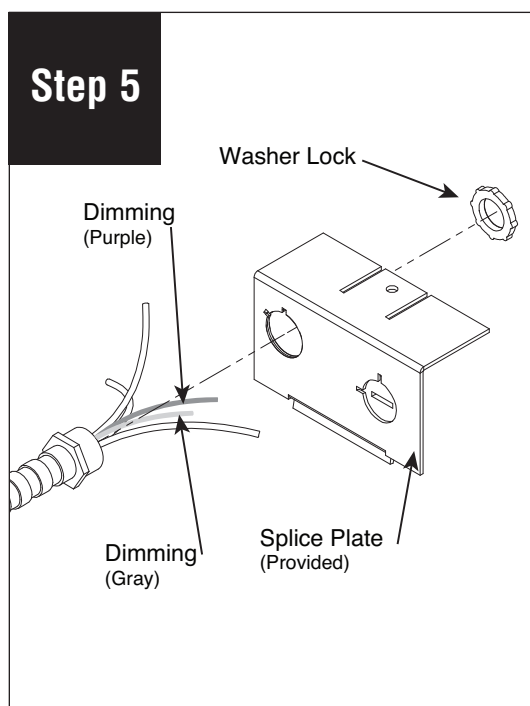
Configure T-Grid to fixture size and leave an opening for luminaire. As noted above.

Step 3

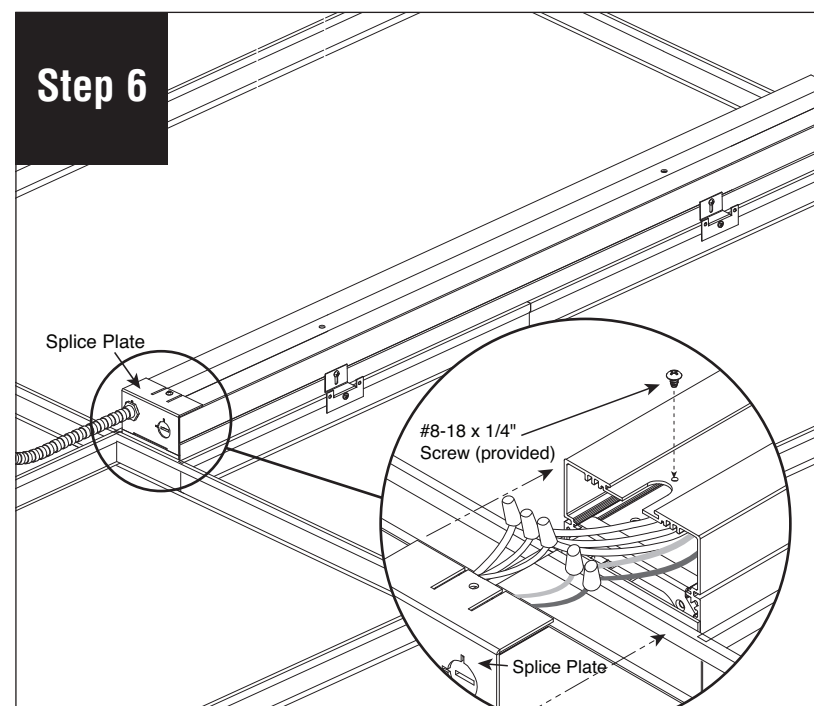
Place fixture on T-Grid.

Step 4

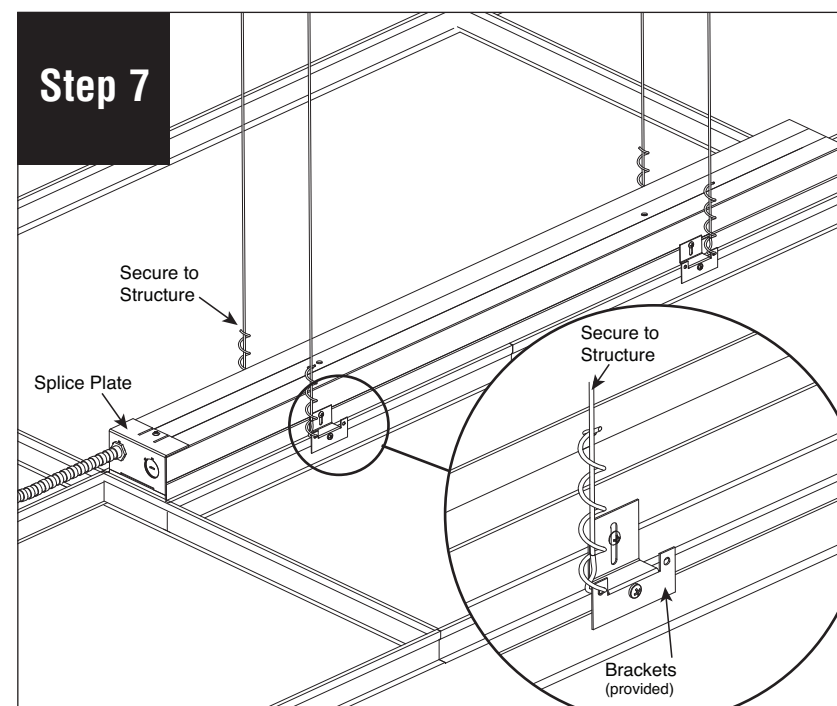
Secure luminaire on T-Grid using provided brackets and screws. Use #8-18 x 1/4" screws (provided) to attach bracket to luminaire and #6-20 x 1/2" self drilling screws (provided) to attach to T-Grid.

Step 5

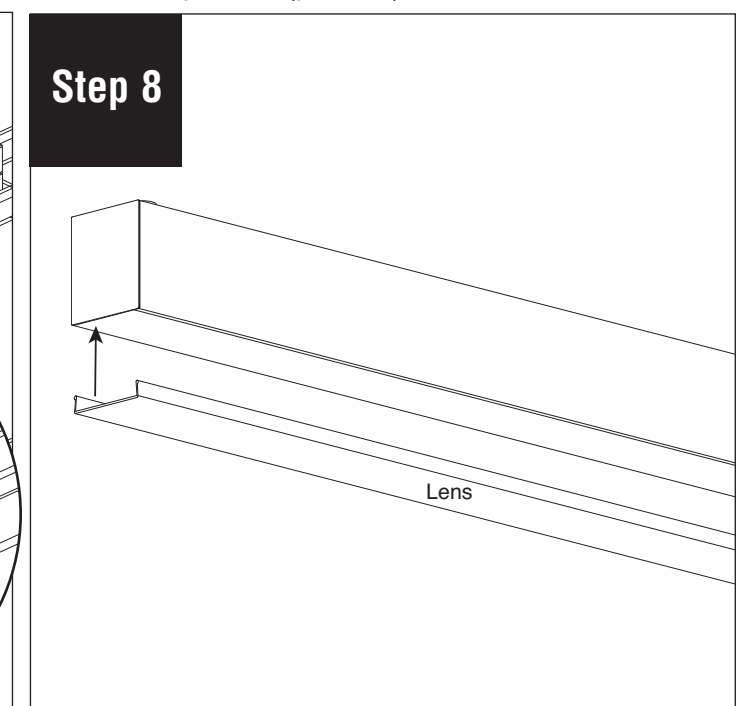
Remove splice plate from end of fixture and insert conduit through splice plate. Secure conduit with lock nut.

Step 6

Make electrical connections and re-install splice plate to fixture.

Step 7

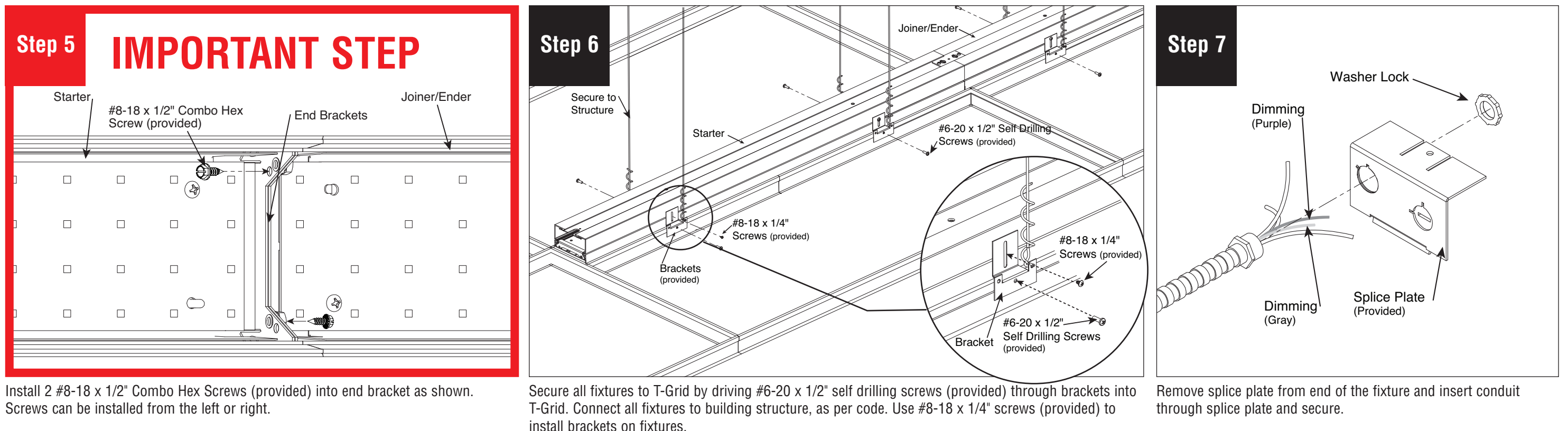
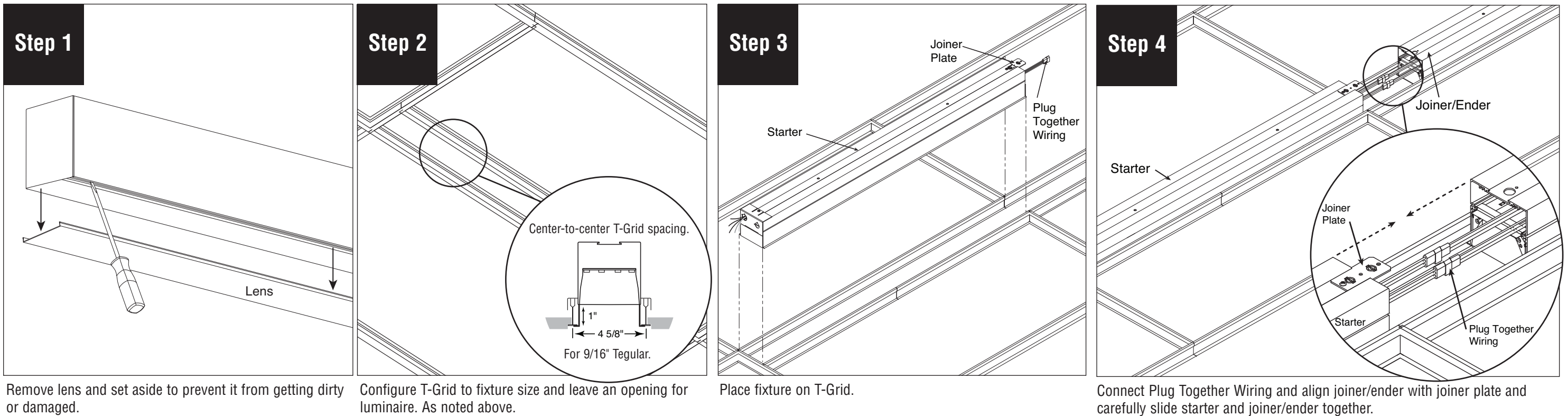
Secure luminaire to building structure, as per code.

Step 8

Reinstall lens and turn power on.

FINELITE

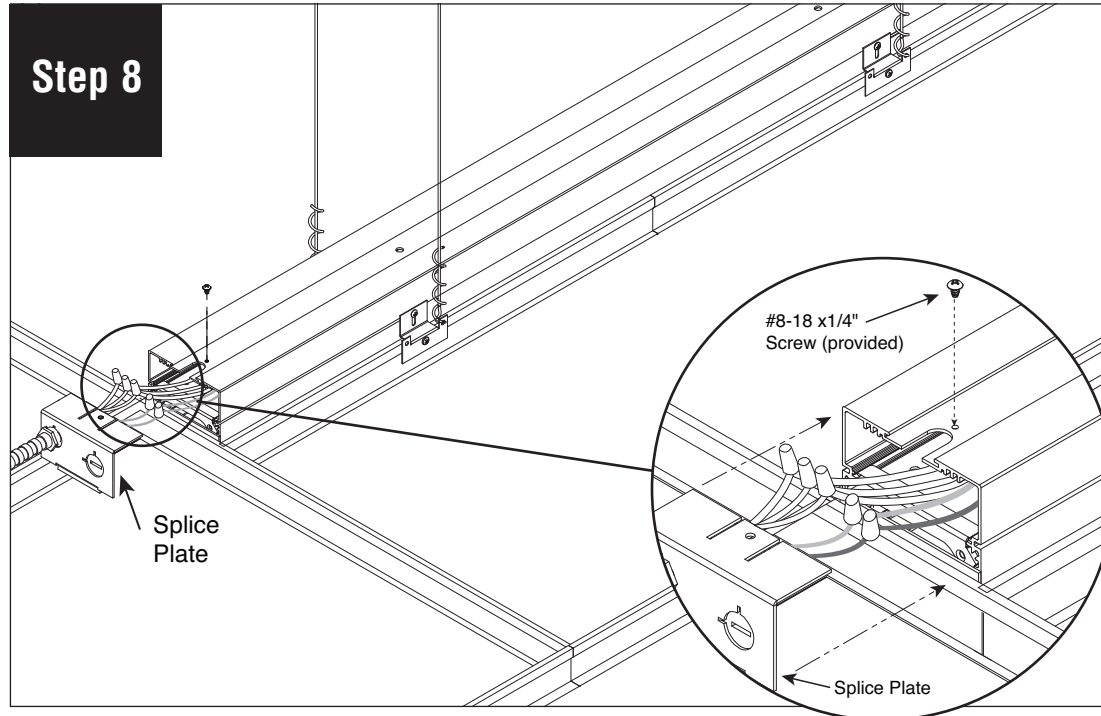
HP-4 Recessed with Regressed Lens 9/16" Tegular Joiner Installation Instructions



FINELITE

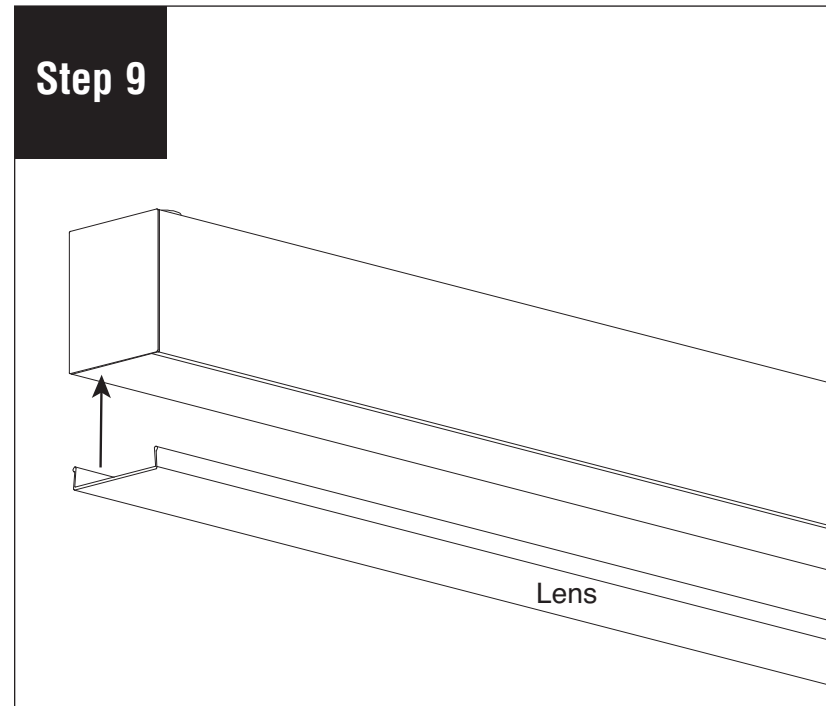
HP-4 Recessed with Regressed Lens 9/16" Tegular Joiner Installation Instructions

Step 8



Make electrical connections and re-install splice plate to fixture.

Step 9



Reinstall lens and turn power on.