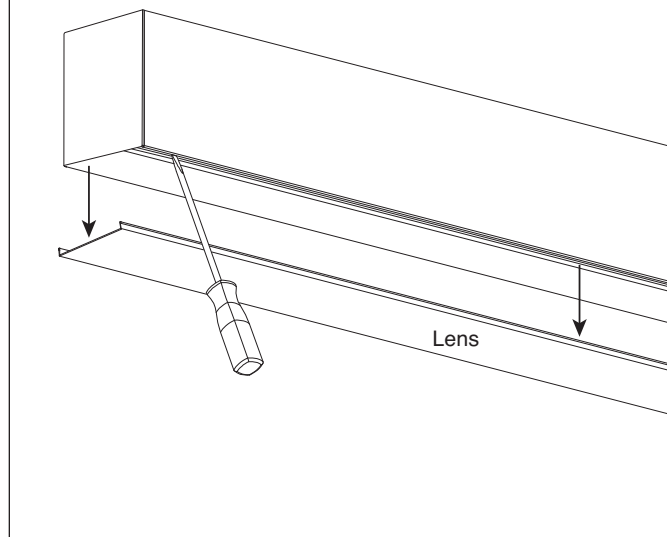


# FINELITE

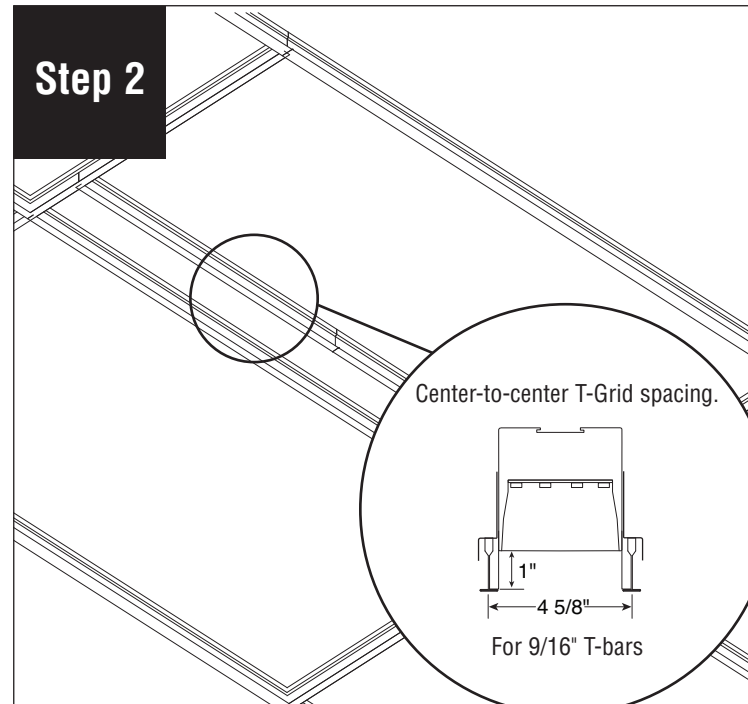
## HP-4 Recessed with Regressed Lens 9/16" T-bar Starter/Independent Installation Instructions

### Step 1



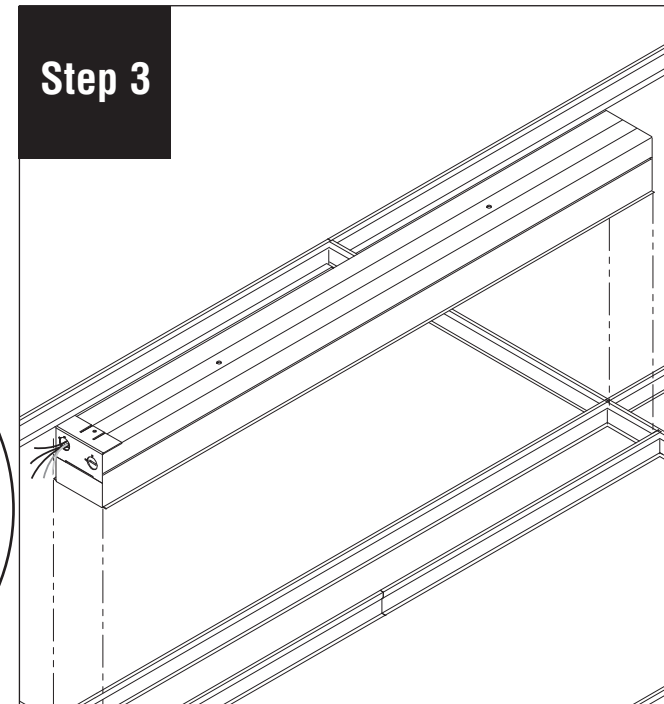
Remove lens and set aside to prevent it from getting dirty or damaged.

### Step 2

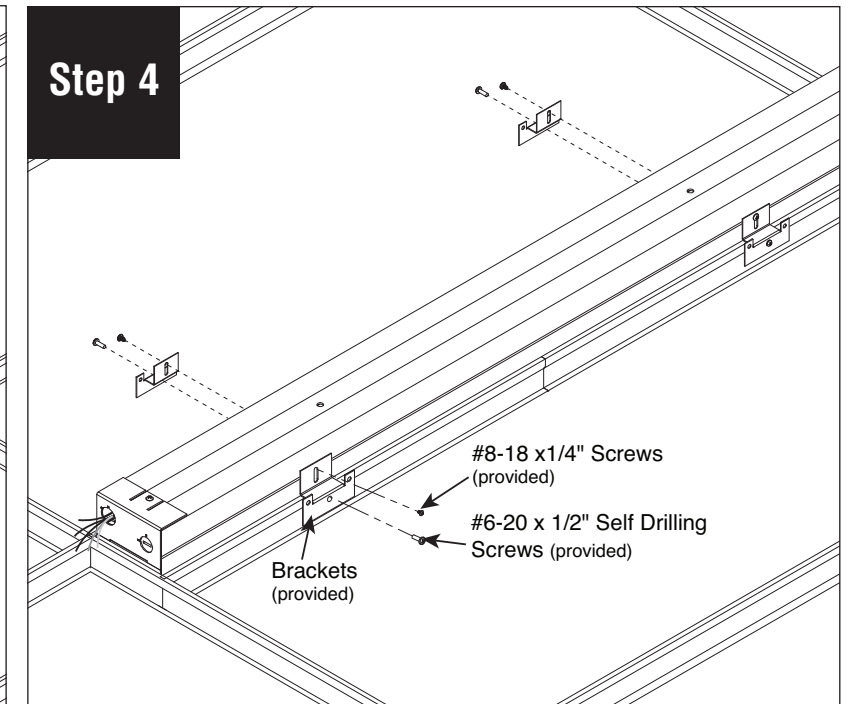


Configure T-Grid to fixture size and leave an opening for luminaire. Place fixture on T-Grid. As noted above.

### Step 3

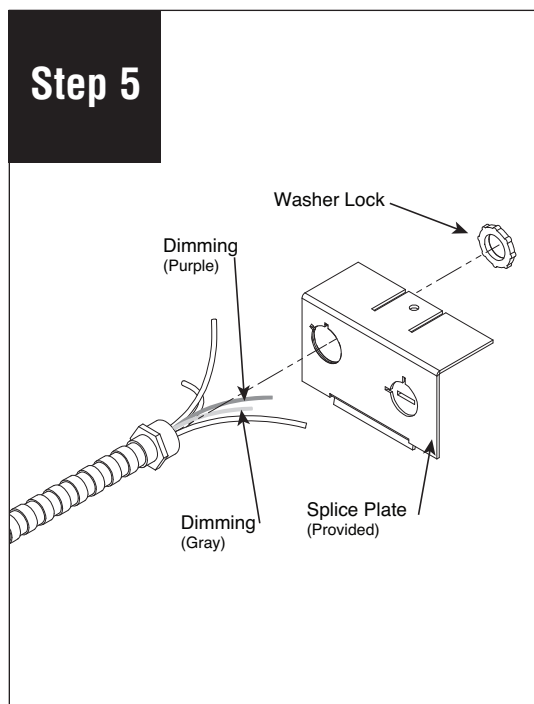


### Step 4



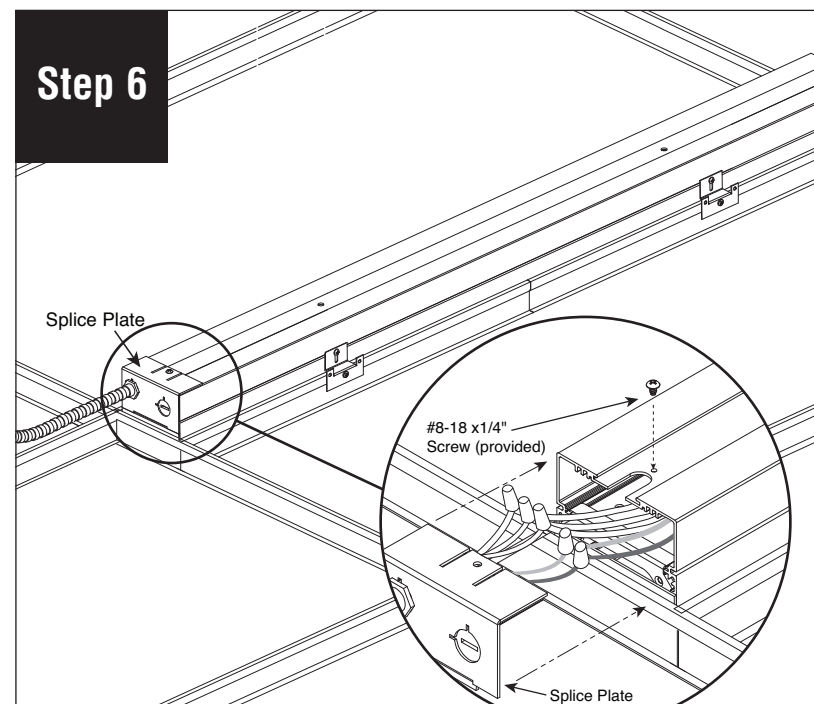
Secure luminaire on T-Grid using provided brackets and screws. Use #8-18 x 1/4" screws (provided) to attach bracket to luminaire and #6-20 x 1/2" self drilling screws (provided) to attach to T-Grid.

### Step 5



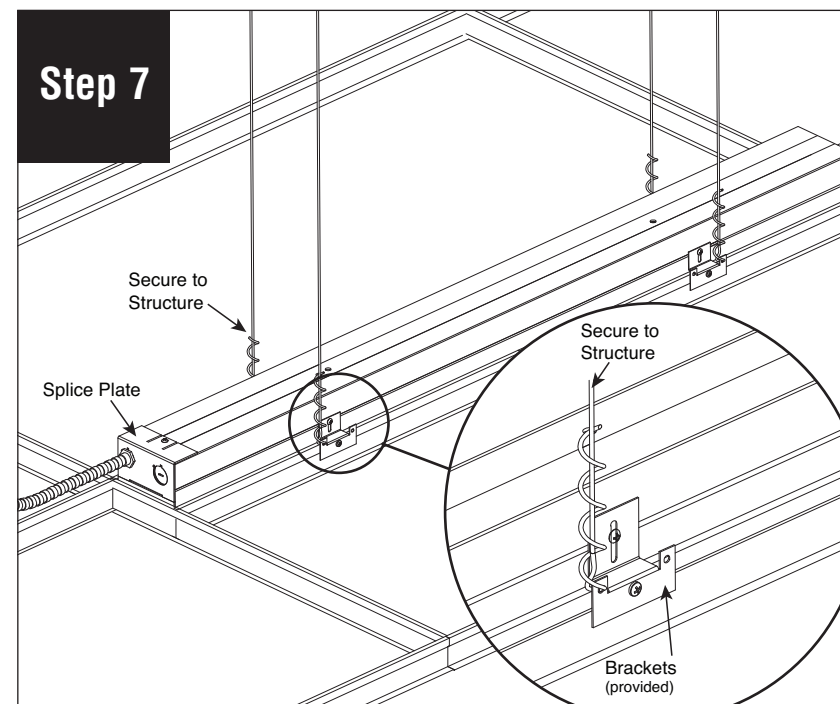
Remove splice plate from end of fixture and insert conduit through splice plate. Secure conduit with lock nut.

### Step 6



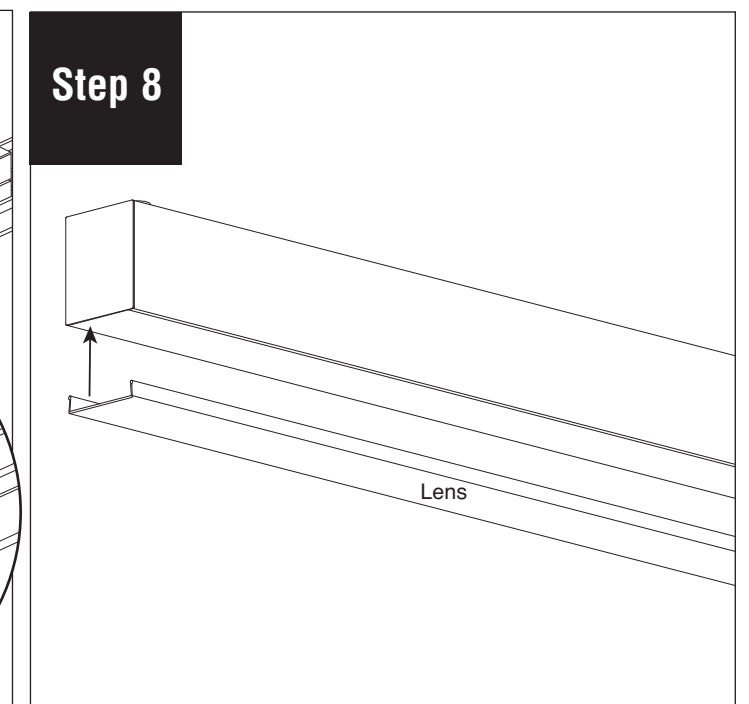
Make electrical connections and re-install splice plate to fixture.

### Step 7



Secure luminaire to building structure, as per code.

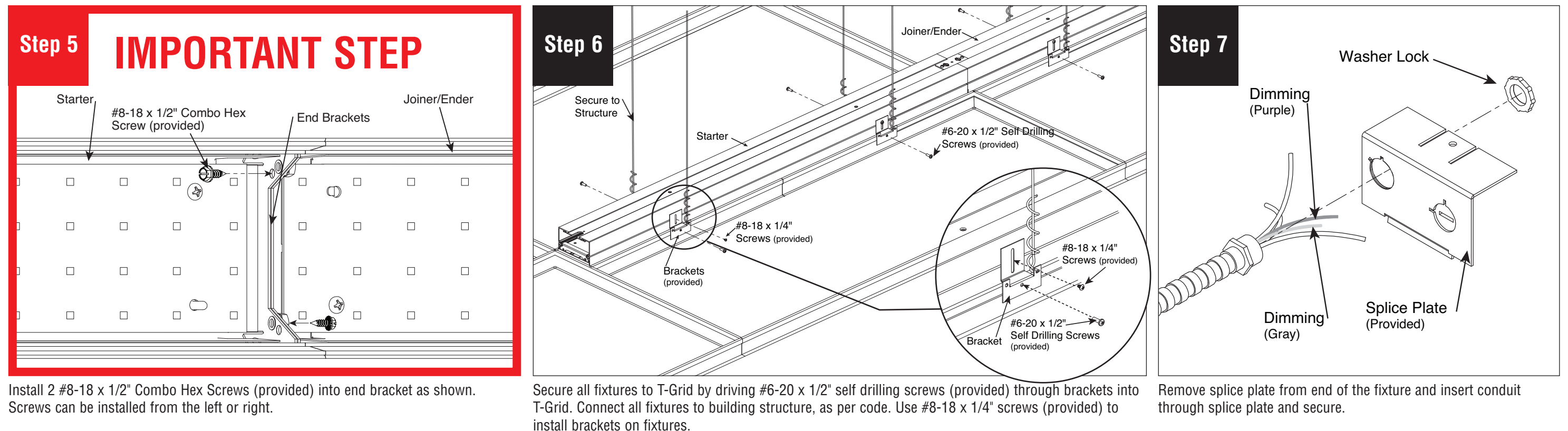
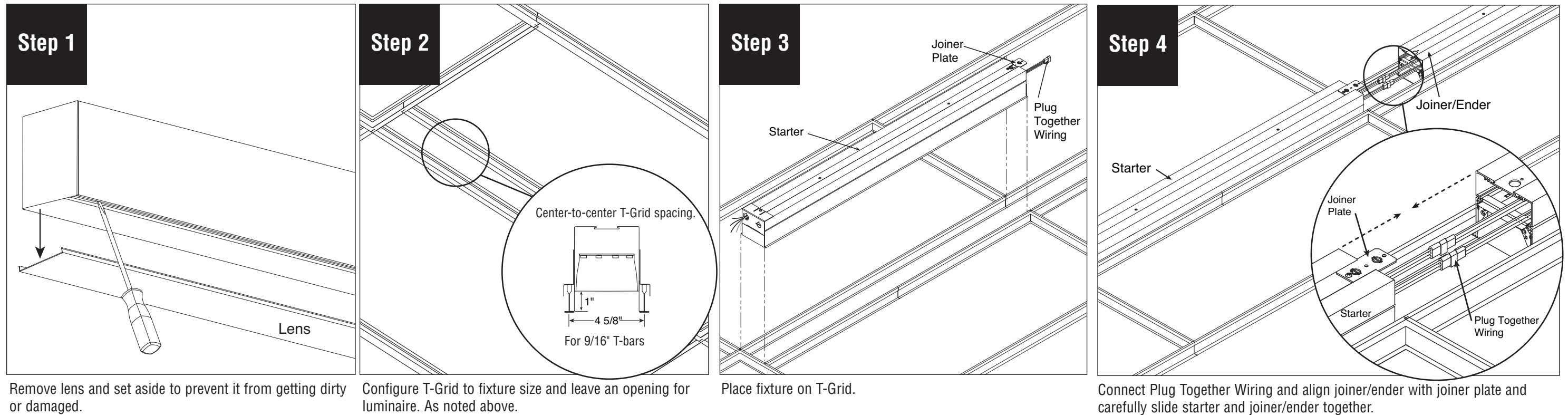
### Step 8



Reinstall lens and turn power on.

# FINELITE

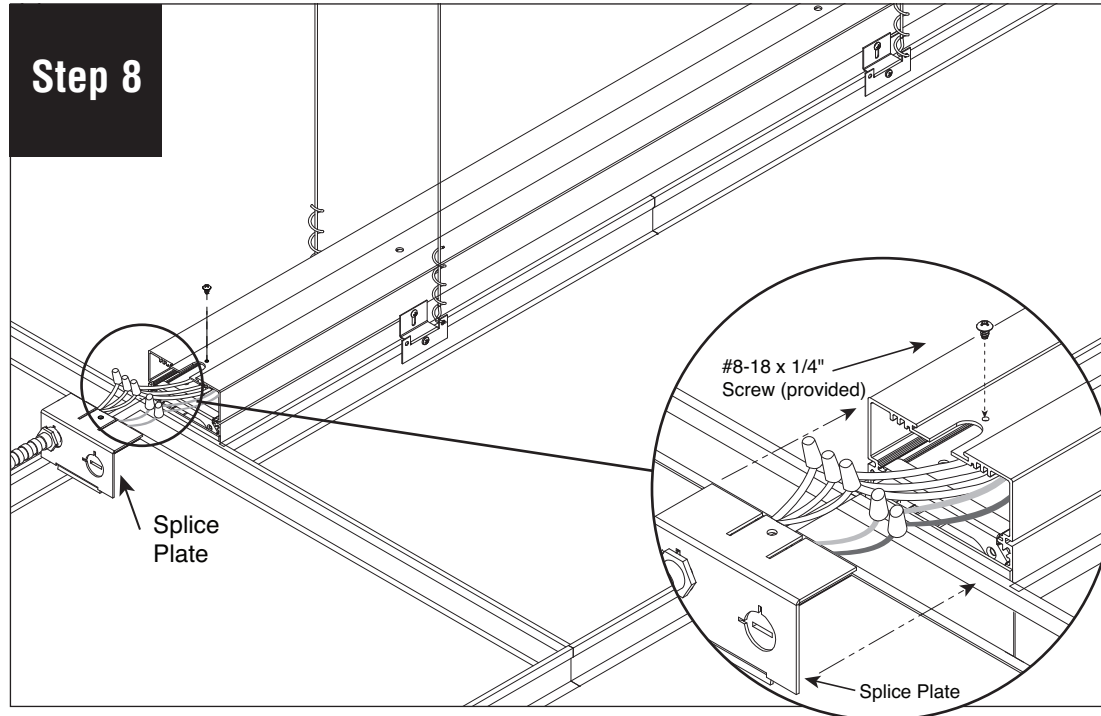
## HP-4 Recessed with Regressed Lens 9/16" T-bar Joiner Installation Instructions



# FINELITE

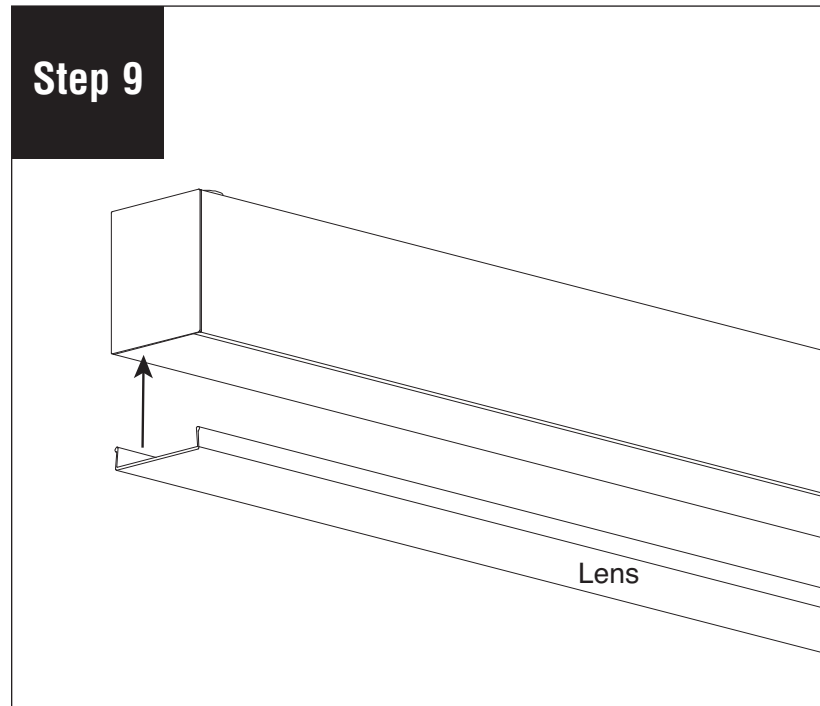
## HP-4 Recessed with Regressed Lens 9/16" T-bar Joiner Installation Instructions

### Step 8



Make electrical connections and re-install splice plate to fixture.

### Step 9



Reinstall lens and turn power on.