



SPECIFICATION SHEET:

## Column Blank Pendant



A straightforward luminous opal acrylic diffuser is complemented with spun horizontal aluminum bars. Choose an eggcrate or concentric bottom louver. Incandescent or energy saving LED or fluorescent options are available for maximum efficiency and performance.

### Related Fixtures

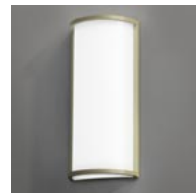
Column Blank Ceiling



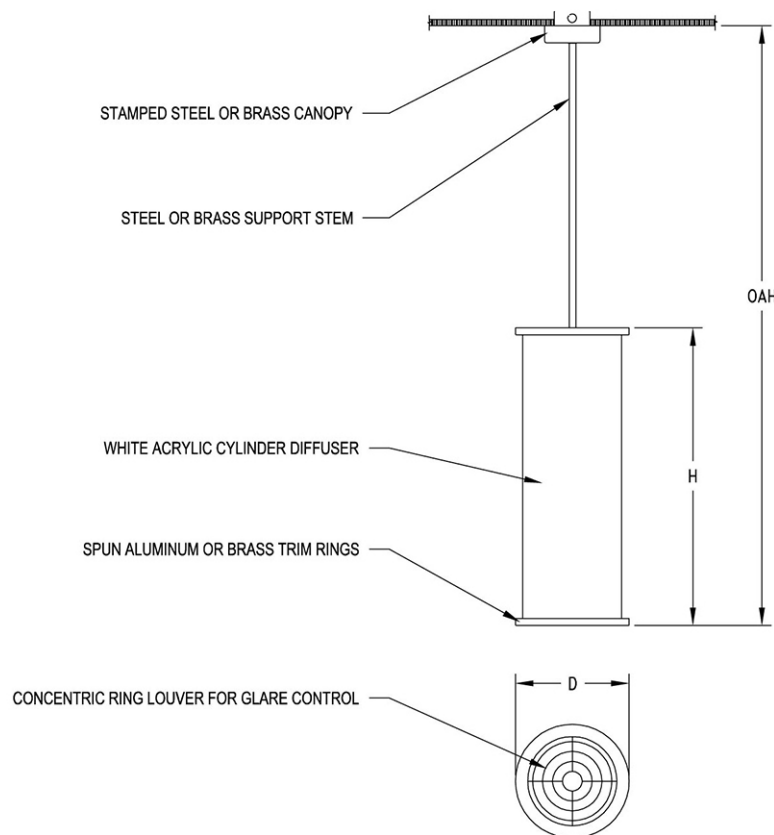
Column Sconce Blank Exterior



Column Blank Sconce



For reference only. Options specified may change appearance.



Fixture	Height	Diameter	OAH	Lamping	Finish: Trim	Louver	Diffuser	Std. Options
LP-530	22"	9.25"	48"	4L6T35 : 4L6T35/1L25C35 : 1N200 : 2F39 : 2F39/1QP75	BA : PB : PT	CON : ECR : LED	WH	FU
LP-532	30"	11.5"	64"	8L6T35 : 8L6T35/1L34C35 : 8N75/1R300 : 4F40/1R300 : 4F40/1QP250 : 4F40/1MHP100	BA : PB : PT	CON : ECR : LED	WH	FU : EMI   DM
LP-534	36"	13.75"	80"	8L6T35 : 8L6T35/1L40C35 : 10N100/1R500 : 4F40/1R500 : 4F40/1QT500 : 4F40/1MHT150 : 6F40/1R500 : 6F40/1QT500 : 6F40/1MHT150	BA : PB : PT	CON : ECR : BGL : LED	WH	FU : EMR   DM (4F40)

Fixture Notes

- LED 10%-100% Dimming: Compatible with 0-10v, Triac or ELV dimming systems. Verify control system.
- Fluorescent Emergency and dimming options not available together. Maximum fluorescent lamping with dimming option is 4F40.

Lamp Specifications

- 1N200: Provisions for (1) 200 watt inside frost A-21 medium base incandescent lamp supplied by others.
- 2F39: Provisions for (2) 39 watt twin tube 2G11 base compact fluorescent lamps supplied by others. Powered by integral electronic high power factor class A ballast, 120 or 277 volt, 60Hz.
- 1QP75: Provisions for (1) 75 watt PAR30 short neck medium base quartz halogen lamp supplied by others.
- 4L6T35: (4) integrated LED array nominal 8 watts ea., 860 lumens ea., 3500K, 80+ CRI, 50,000 hr. L70. Constant current Class 2 LED drivers, max. input power = 36W.
- 1L25C35: (1) LED downlight module, nominal 26 watts, 2000 lumens, 3500K, >90 CRI, 50,000 hr. L70. Constant current 120/277v LED driver, max. input power = 26W.
- 8N75: Provisions for (8) 75 watt inside frost A-19 medium base incandescent lamps supplied by others.
- 1R300: Provisions for (1) 300 watt inside frost R40 medium base reflector flood lamp supplied by others.
- 4F40: Provisions for (4) 40 watt twin tube 2G11 base compact fluorescent lamps supplied by others. Powered by integral electronic high power factor class A ballasts), 120 or 277 volt, 60Hz.
- 1QP250: Provisions for (1) 250 watt quartz halogen PAR38 medium base reflector flood lamp supplied by others.
- 1MHP100: (1) 100 watt PAR38 M140 medium base open fixture metal halide lamp supplied by others. Powered by "F" can high power factor M140 HID ballast 120/277 volt 60Hz supplied for remote installation by others.
- 8L6T35: (8) integrated LED arrays, nominal 8 watts ea., 860 lumens ea., 3500K, 80+ CRI, 50,000 hr. L70. Constant current Class 2 LED drivers, max. input power = 64W.
- 1L34C35: (1) LED downlight module, nominal 38 watts, 3000 lumens, 3500K, >90 CRI, 50,000 hr. L70. Constant current 120/277v LED driver, max. input power = 38W.
- 10N100: Provisions for (10) 100 watt inside frost A-19 medium base incandescent lamps supplied by others.
- 1R500: Provisions for (1) 500 watt inside frost R40 mogul base reflector flood lamp supplied by others.
- 1QT500: Provisions for (1) 500 watt frosted T4 mini-candelabra quartz halogen lamp supplied by others. Osram Sylvania lamps recommended
- 1MHT150: Provisions for (1) 150 watt T6 M142/E G12 base enclosed fixture ceramic metal halide lamp supplied by others. Powered by integral electronic high power factor M142 HID ballast 120/277 volt 60Hz.
- 6F40: Provisions for (6) 40 watt twin tube 2G11 base compact fluorescent lamps supplied by others. Powered by integral electronic high power factor class A ballasts, 120 or 277 volt, 60Hz.
- 1L40C35: (1) LED downlight module, nominal 50 watts, 4000 lumens, 3500K, >90 CRI, 50,000 hr. L70. Constant current 120/277v LED driver, max. input power = 50W.

Fixture Details

- OAH is standard unless specified.
- Specify three digit color suffix with "PT" finish option and CD diffuser option.
- HOUSING: Two spun aluminum or brass trim rings over an extruded white acrylic cylinder diffuser.
- MOUNTING: Fixture supplied with painted canopy, 35-degree swivel ball and hanger for mounting to standard octagon junction box.
- CIRCUITS: Dual-level circuiting for interior lamps/downlight standard.

Finish Specifications

- BA: Brushed Solid Aluminum: Satin brushed aluminum material coated with a low VOC thermo cure clear lacquer.
- PB: Polished Brass: Polished brass material.
- PT: Standard Painted Finishes: Polyester resin powder coat paint finish.

Louver Specifications

- CON: Concentric Ring
- ECR: 1/2" Square Cell Black Egg Crate
- LED: Reflector & bottom cover plate (for LED lamp options only)
- BGL: Baffle & glass lens (for QT & MHT lamps only)

Diffuser Options

- WH: Opal White Acrylic

Standard Options

- FU: Fusing: Supplied with integral fuse holder and fuse, sized for electrical requirements.
- EMI: Integral Emergency Battery: Integral fluorescent emergency battery pack, indicator light, and test switch. Consult factory for options with LED lamping.
- DM: Fluorescent Dimming: Supplied with integral Lutron electronic fluorescent dimming ballast 120 or 277 volt, 60 Hz.
- EMR: Remote Emergency Battery: Supplied with remote mounted emergency battery indicator light, and test switch for installation by others. Distance from lamp to battery is limited, consult factory to ensure compatibility with your application.
- DM (4F40): Dimming for 4 x F40 compact fluorescent lamps: Supplied with integral Lutron electronic fluorescent dimming ballasts for four lamps, 120 or 277 volt, 60 Hz.

To Specify

- 1) Choose a finish for the Trim
- 2) Choose a lamping option
- 3) Choose a voltage option
- 4) Choose a diffuser
- 5) Choose a louver
- 6) Choose standard options

Sample: LP-532-PT(BLK)-4F40/1R300-120-WH-ECR

Click here to build a custom specification sheet.