

itl boulder

THE LIGHT CENTER OF THE INDUSTRY SINCE 1955

INDEPENDENT TESTING LABORATORIES, INC.

3386 LONGHORN ROAD, BOULDER, CO 80302 USA

PHONE: (303)442-1255

FAX: (303)449-5274

E-MAIL: itl@itlboulder.com

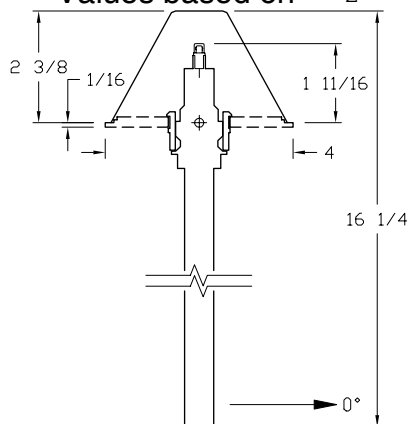
WEBSITE: www.itlboulder.com

ISOFOOTCANDLE LINES OF HORIZONTAL ILLUMINATION

Values based on

2

foot mounting height.



REPORT NUMBER: ITL60921A

DATE: 09/05/08

PREPARED FOR: B-K LIGHTING

CATALOG NUMBER: CHL-LED-318-XXX-C-XXX

LUMINAIRE: FABRICATED BROWN PAINTED METAL MOUNTING STEM, FABRICATED SEMI-DIFFUSE METAL SOCKET MOUNTING BASE WITH MOLDED BLACK PLASTIC THREADED SOCKET, ONE FABRICATED LED MODULE CONSISTING OF: CAST SEMI-SPECULAR THREADED METAL BASE, EIGHT SIDED SEMI-SPECULAR FINISHED CYLINDRICAL LED MOUNTING COLUMN, EIGHT LEDS MOUNTED AROUND PERIMETER OF COLUMN, CLEAR PLASTIC LENS. CLEAR PLASTIC LENS WITH TEXTURED PERIMETER, CAST TAN PAINTED LENS MOUNTING COLLAR, SPUN COPPER PAINTED TOP HOUSING/REFLECTOR WITH WHITE PAINTED INTERIOR.

LAMP: EIGHT 1.1-WATT WHITE LIGHT EMITTING DIODES (LEDs), LEDS AIMED AT THE HORIZON.

TOTAL INPUT WATTS = 2.19 AT 120.0 VOLTS LED DRIVER: LIGHTTECH LED 10CC 350 PLU

NOTE: DATA SHOWN IS ABSOLUTE FOR THE SAMPLE PROVIDED AT RATED INPUT VOLTAGE (120VAC) TO THE LED DRIVER. LAMP INFORMATION PROVIDED BY CLIENT. UPPER HEMISPHERE LIGHT NOT MEASURED AT CLIENT'S REQUEST.

IES Classification: Type V, Cutoff

Checked N. WHITE

Approved R. BEATTIE

