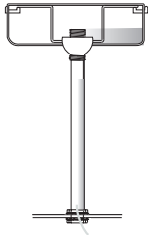




HM*-HANG-STRAIGHT

45° SWIVEL 1/2" STEM
3/8" NPT

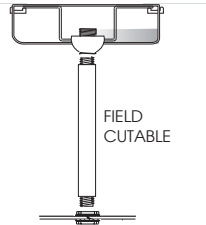


ORDER: **HM**(length)
SPECIFY LENGTH:
HM3-3"(MINIMUM)
HM6-6"
HM12-12"
HM18-18"
HM24-24"
HM36-36"
HM48-48"
HM72-72"
HMLC(12, 16, 22)
P13-Custom Length
(specify in inches)

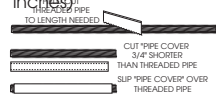
FINISH
Canopy / Stem Finish
Matches Fixture Finish.

**HMAT- HANG-STRAIGHT
ALL THREAD**

45° SWIVEL 1/2" STEM
1/4" IP



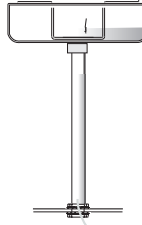
ORDER: **HMAT** (length)
SPECIFY LENGTH:
HMAT12-12"
HMAT24-24"
HMAT36-36"
HMAT48-48"
HMAT72-72"
HMATLC(12, 16, 22)-Cus-
tom Length (specify in
inches)



FINISH
Canopy / Stem Finish
Matches Fixture Finish.

PM*- PENDANT MOUNT

RIGID 1/2" STEM
3/8" NPT

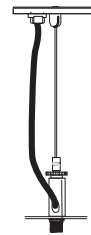


ORDER: **PM** (length)
SPECIFY LENGTH:
PM3-3"(MINIMUM)
PM6-6"
PM12-12"
PM18-18"
PM24-24"
PM36-36"
PM48-48"
PM72-72"
PMLLC(12, 16, 22)-Custom
Length (specify in inches)

FINISH
Canopy / Stem Finish
Matches Fixture Finish.

**CD*- CORD/CABLE
MOUNT**

SJ CORD/1/16 SS CABLE



ORDER: **CD**(length)
SPECIFY LENGTH:
CD36CP13 -36"
CD72-72"
CD144-144"
CD(12, 16, 22)-Custom
Length (specify in inches)

FIXTURE COLOR	CORD COLOR
White	White
Silver	Gray
All others	Black

**HCP- HOOK CORD
AND PLUG**

FOR INDEPENDANT MOUNTING



ORDER: **HCP(plug)**
Specify Plug: 120v **L120**
277v **L27**.

SC1- SAFETY CABLE

ORDER: **SC1**
1/16" Stainless steel
safety cable for added
support. Standard kit is
18" and is provided with
double barrel locks.
Rated at 50lbs.
Approved for California
seismic requirements.

SPECTRUM LIGHTING LUMEN MAX FINISH OPTIONS



Dimensions shown are nominal. Spectrum Lighting is continually improving products and reserves the right to make changes that will not alter performance or appearance with or without written notice.

PROJECT:	TYPE:
CAT. NO.:	



DRIVER	USE DIAGRAM	WIRING DIAGRAM
DS2W1 -Spectrum ELV MLV 10% Phase Dimming 120v	1	DIAGRAM 1 -2 WIRE PHASE DIMMING
DE011 -Spectrum .01% 0-10V Dimming 120v	2	DIAGRAM 2 -0-10 VOLT DIMMING
DE022 -Spectrum .01% 0-10V Dimming 277v	2	
DO101 -Spectrum 1% 0-10V Dimming 120v	2	DIAGRAM 3-LUTRON™ HI LUME
DO102 -Spectrum 1% 0-10V Dimming 277v	2	
DS101 -Spectrum 10% 0-10V Dimming 120v	2	DIAGRAM 4-LUTRON™ ECOSYSTEM
DS102 -Spectrum 10% 0-10V Dimming 277v	2	
DLTE1 -Lutron ELV MLV 1% Phase Dimming 120v	1	
DL33X -Lutron Hi Lume 1% Dimming 120v/277v	3	
DL3EX -Lutron ECO System 1% Dimming 120v/277v	4	
LDE1 -Lutron ECO System 1% Fade to Black Dimming 120v/277v	4	
LDE5 -Lutron ECO System 5% Dimming 120v/277v	4	
DALI -Spectrum DALI Control Dimming 120V/277V	DALI	
DMX -Spectrum DMX Control Dimming 120V/277V	DMX	

Dimming systems not available on all fixtures. Consult individual specification sheets for availability.

OTHER CONTROLS

- DE011/2**-For Theatrical Use 0-10V Dimming Controls. Smooth dimming to **.01%**
- DS101/2**-0-10V Dimming Controls. Smooth dimming to **10%**
- DO101/2**-0-10V Dimming Controls. Smooth dimming to **1%**
- WZIG**-ZigBee Wireless Control Protocol
- WEND**-EnOcean Wireless Control Protocol
- DLTE1**-120/277V LUTRON™ ELV/MLV Dim s smoothly to **1%** with standard Phase Cut controls
- LDE1**-LUTRON™ ECOSYSTEM Smooth dimming to **1%** fades to black.
- DMX**-DMX CONTROLS Can Be Ordered Installed In Each Fixture For Multi-Channel (4 Channel) Remote Dimming. Consult factory for details.
- MOT**-Motion Sensor
- PHO**-Photo Control



LUMEN MAX ADDITIONS

EMERGENCY BATTERY OPTIONS

FUSING

MODEL NO.: FS



Slow blow type fuse protects fixture against voltage surges. Factory installed.

SURGE

PROTECTOR

MODEL NO.: LSP10-SM



Surge protector absorbs transient electrical spikes and protects fixtures and electronics. Re-sets after surge. 120/277v. Factory Installed.

SAFETY CABLE

MODEL NO.: SC1



1/16" Stainless steel safety cable for added support. Standard kif is 18" and is provided with double barrel locks. Rated at 50lbs. Approved for California seismic requirements.

CHOOSE EM BATTERY

EMRML5W-5 watts Remote Emergency Battery for LED 120v/277



EMRML7W-7 watts Remote Emergency Battery for LED 120v/277



EMRML12W-12 watts Remote Emergency Battery for LED 120v/277



Emergency systems may be integral on some Lumen Max Fixtures-Consult Specification Sheets.

LED SERIES	LED EMITTER SOURCE LUMENS	EMLED5W SOURCE LUMENS (90 MIN)	EMLED7W SOURCE LUMENS (90 MIN)	EMLED12W SOURCE LUMENS (90 MIN)
LEDXI	900-3000 lms	300 lms	500 lms	800 lms
LEDGV	1500-6050 lms	700 lms	900 lms	1600 lms

Dimensions shown are nominal. Spectrum Lighting is continually improving products and reserves the right to make changes that will not alter performance or appearance with or without written notice.



PROJECT:

TYPE:

CAT. NO.:



LUMEN MAX-REFLECTOR OPTIONS

PR(12,16,22) - Clear
Prismatic Acrylic Refractor



POLY-Polycarbonate Option for PR(12,16,22) available.

DF(12,16,22) - Diffuse
Prismatic Acrylic Refractor



OP(12,16,22) - Opal
White Acrylic Refractor



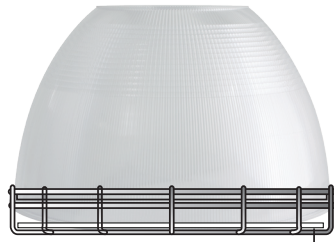
AL (12,16,22) - Aluminum
Reflector



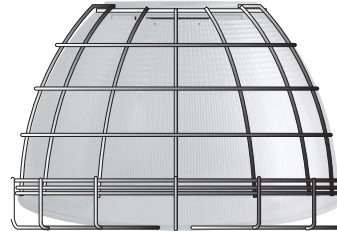
LUMEN MAX-WIRE GUARD/REFLECTOR SHIELD

WIRE GUARDS LED Fixtures typically do not require wireguards as fixture has no glass or lamp to damage in sports facilities. We offer traditional wireguards (**WAG**) as well as Half-Fixture wire guards (**HWG**).

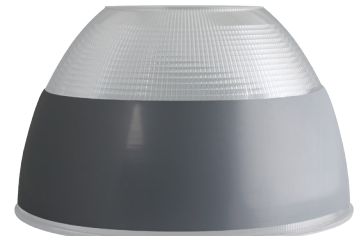
REFLECTOR SHIELDS: Used on PR refractor to minimize side-light. (**RS**) for 22" only. Fished to match fixture



FACE WIRE GUARDS (WAG12,16, 22)
Guard Covers opening of reflector. May be combined with flat lenses (**OP**) and (**PA**).



HALF WIRE GUARD (HWG 12,16, 22)
Covers and protects opening of reflector and exterior. Chrome plated #14 ga wire.



REFLECTOR SHIELD (RS 12,16, 22)
Reflector Shield minimizes side light output while allowing up light (30%)

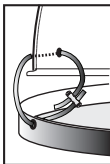
LUMEN MAX-DIFFUSER OPTIONS

DIFFUSING LENS OPTIONS
Spectrum offers several lens options for visual comfort, light distribution and interior protection. There are 2 retaining options:

Band Clamp: (BC12, BC16,C22)-
Stainless Steel for simple clean fit (PR Reflector only)

Door: (DR12, DR16, DR22)
Spun Aluminum door with thumb screws. Paint finish matches fixture for a unified look. (PR and AL Reflectors)

Safety Cable: (SC2)
1/16" Stainless steel cable holds door to fixture.



BC(12, 16, 22)CN - Conical Lens
BC(12, 16, 22)CNFR - Frosted Conical Lens



BC(12, 16, 22)DL - Drop Lens



BC(12, 16, 22)OA - Opal Acrylic



BC(12, 16, 22)FO90 - Matte White Lens
use with LED



BC(12, 16, 22)CL - Clear Acrylic



BC(12, 16, 22)PP - Prismatic Polycarbonate



DR(12, 16, 22)CN - Conical Lens
DR(12, 16, 22)CNFR - Frosted Conical Lens



DR(12, 16, 22)DL - Drop Lens



DR(12, 16, 22)OA - Opal Acrylic



DR(12, 16, 22)FO90 - Matte White Lens
use with LED



DR(12, 16, 22)CL - Clear Acrylic



DR(12, 16, 22)PP - Prismatic Polycarbonate



Dimensions shown are nominal. Spectrum Lighting is continually improving products and reserves the right to make changes that will not alter performance or appearance with or without written notice.

PROJECT:	TYPE:
CAT. NO.:	