

DAVIS®

# MilanoFlair Price List

Designed by Wolfgang C.R. Mezger

Licensed from Brunner

Effective March 1, 2016



## MILANOFLAIR Chair Series

Specifications .....	2
Options .....	3
Images .....	4
MI-3910 .....	5
MI-3911 .....	5
MI-3920 .....	6
MI-3921 .....	6
MI-Cart .....	6

## FEATURES

---

### Arms

Arms are solid wood and attach to the steel frame  
Arms will match finish on oak seat units  
When upholstered, white painted arms will be standard with all mesh colors except black. Upholstered chairs with black mesh will come standard with black painted arms.

---

### Back

Sewn mesh back

---

### Frame

Steel frame has mitered corners on back legs  
Unique connections on arm chairs

---

### Glides

All chairs standard with black plastic glides with white nylon tip – multi-purpose surface glides  
*Optional glides are available see Options - page 3*

---

### Stacking

Low density stacking - veneer chairs stack 10 high and upholstered chairs stack 8 high  
A hand cart for transportation is available - see page 6  
Veneer chairs have clear stacking bumpers  
Upholstered chairs have a black seat pan

---

### Upholstery

Davis Fabric and Leather Program COL/COM



## OPTIONS

---

**Back Mesh** – *must specify*

- MI-Beige Mesh
  - MI-Black Mesh
  - MI-Blue Mesh
  - MI-Brown Mesh
  - MI-Green Mesh
  - MI-Grey Mesh
  - MI-Orange Mesh
  - MI-Purple Mesh
  - MI-White Mesh
  - MI-Yellow Mesh
- 

**Glides**

All chairs standard with black plastic glides with white nylon tip – multi-purpose surface glides / replacement in field

- **MI-Plastic-R** at a cost of **\$22** List for set of 4

*Optional glides are available –*

- **MI-Metal** - for carpeting - chrome tip with black insert - *looks best with chrome frame* - no additional charge at time of order / replacement in field
- **MI-Metal-R** at a cost of **\$22** List for set of 4
- **MI-Felt** - for wood floors - black felt on black glide - no additional charge at time of order / replacement in field
- **MI-Felt-R** at a cost of **\$ 22** List for set of 4
- **MI-Sound** - for noise reduction on hard surfaced floor - medium grey with rubber sound absorption rubber - **\$66** List additional at time of order / replacement in field - **MI-Sound-R** at a cost of **\$ 81** List for set of 4

**Note:** *To replace glides in field the old glide will have to be cut and pulled out or pushed into leg for new glide to be inserted*

---

**Metal Finishes**

- Chrome (-CH)
  - Powder coat Finishes – Black (-BL), Silver (-SI), Matte Black (-MB), Matte Silver (-MS), Matte White (-MW)
- 

**Upholstery**

Davis Fabric and Leather Program or COM / COL

---

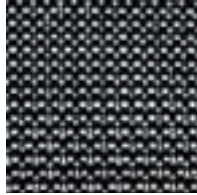
**Wood Finishes**

- |     |     |                 |
|-----|-----|-----------------|
| Oak | -OA | 301 Natural Oak |
|     |     | 302 Medium Oak  |
|     |     | 303 Grey Oak    |
|     |     | 304 Brown Oak   |

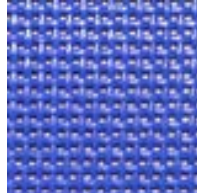
## MESH COLOR OPTIONS



MI-Beige



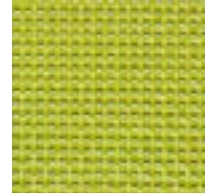
MI-Black



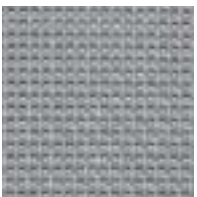
MI-Blue



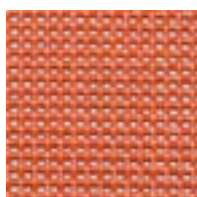
MI-Brown



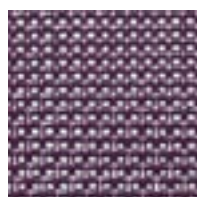
MI-Green



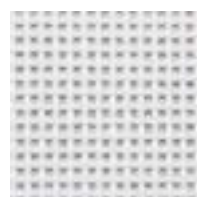
MI-Grey



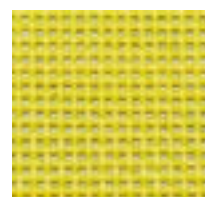
MI-Orange



MI-Purple



MI-White



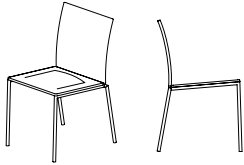
MI-Yellow

Example: item number **MI-3910** + wood suffix **-OA** + finish suffix **-CH** = **MI-3910-OA-CH**

# MILANOFLAIR Chair Series

Item	Description	Dimensions	inches			centimeters		
			w	d	h	w	d	h
<b>MI-3910</b>	<b>Mesh Back</b> Oak Veneer Seat Armless	Outside	19	21 <sup>1</sup> / <sub>2</sub>	32 <sup>5</sup> / <sub>8</sub>	48.3	54.6	82.9
		Inside	16 <sup>7</sup> / <sub>8</sub>	18 <sup>1</sup> / <sub>8</sub>	16 <sup>1</sup> / <sub>8</sub>	42.9	46	41
		Seat	-	-	17 <sup>1</sup> / <sub>2</sub>	-	-	44.5

Shipping Weight approx 16 lbs.



**GLIDE OPTION – MI-Metal or MI-Felt** No charge at time of order  
**MI-Sound** (sound absorbing) **\$66**

**NOTE:** Standard with Black Plastic Glide with white nylon tip – multi-purpose  
Must specify mesh color

List Price

Wood

**-OA**

Selection

Oak

**Finish**

**-CH** Chrome

**612**

**-BL** Black

**-SI** Silver

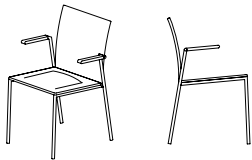
**-MB** Matte Black

**-MS** Matte Silver

**-MW** Matte White

<b>MI-3911</b>	<b>Mesh Back</b> Oak Veneer Seat Arm	Outside	21 <sup>7</sup> / <sub>8</sub>	21 <sup>1</sup> / <sub>2</sub>	32 <sup>5</sup> / <sub>8</sub>	55.6	54.6	82.9
		Inside	17 <sup>3</sup> / <sub>8</sub>	18 <sup>1</sup> / <sub>8</sub>	16 <sup>1</sup> / <sub>8</sub>		44.1	46 41
		Arm			25 <sup>3</sup> / <sub>4</sub>			65.4
		Seat	-	-	17 <sup>1</sup> / <sub>2</sub>	-	-	44.5

Shipping Weight approx 19 lbs.



**GLIDE OPTION – MI-Metal or MI-Felt** No charge at time of order  
**MI-Sound** (sound absorbing) **\$66**

**NOTE:** Standard with Black Plastic Glide with white nylon tip – multi-purpose  
Must specify mesh color

List Price

Wood

**-OA**

Selection

Oak

**Finish**

**-CH** Chrome

**735**

**-BL** Black

**-SI** Silver

**-MB** Matte Black

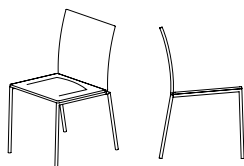
**-MS** Matte Silver

**-MW** Matte White

# MILANOFLAIR Chair Series

Example: item number **MI-3920** + finish suffix **-BL** = **MI-3920-BL**

Item	Description	Dimensions	inches			centimeters		
			w	d	h	w	d	h
<b>MI-3920</b>	<b>Mesh Back</b> Upholstered Seat Armless	Outside	19	21 <sup>1</sup> / <sub>2</sub>	32 <sup>5</sup> / <sub>8</sub>	48.3	54.6	82.9
		Inside	16 <sup>7</sup> / <sub>8</sub>	18 <sup>1</sup> / <sub>8</sub>	15	42.9	46	38.1
		Seat	-	-	18 <sup>3</sup> / <sub>8</sub>	-	-	46.7



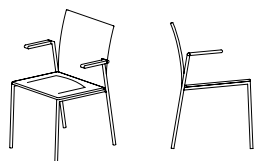
Yardage (54")  $\frac{3}{4}$  yd / 13<sup>1</sup>/<sub>2</sub> sq ft  
Shipping Weight approx 16 lbs.

**GLIDE OPTION – MI-Metal or MI-Felt** No charge at time of order  
**MI-Sound** (sound absorbing) **\$66**

**NOTE:** Standard with Black Plastic Glide with white nylon tip – multi-purpose  
Must specify mesh color

Finish	List Price Grades COM/COL	A	B	C	D	E	F	G	H	I	J	K	L
-CH Chrome	<b>632</b>	<b>654</b>	<b>676</b>	<b>698</b>	<b>720</b>	<b>742</b>	<b>764</b>	<b>786</b>	<b>808</b>	<b>830</b>	<b>852</b>	<b>874</b>	<b>896</b>
-BL Black													
-SI Silver													
-MB Matte Black													
-MS Matte Silver													
-MW Matte White													

<b>MI-3921</b>	<b>Mesh Back</b> Upholstered Seat Arm	Outside	21 <sup>7</sup> / <sub>8</sub>	21 <sup>1</sup> / <sub>2</sub>	32 <sup>5</sup> / <sub>8</sub>	55.6	54.6	82.9
		Inside	17 <sup>3</sup> / <sub>8</sub>	18 <sup>1</sup> / <sub>8</sub>	15	44.1	46	38.1
		Arm	-	-	25 <sup>3</sup> / <sub>4</sub>	-	-	65.4
		Seat	-	-	18 <sup>3</sup> / <sub>8</sub>	-	-	46.7



Yardage (54")  $\frac{3}{4}$  yd / 13<sup>1</sup>/<sub>2</sub> sq ft  
Shipping Weight approx 19 lbs.

**GLIDE OPTION – MI-Metal or MI-Felt** No charge at time of order  
**MI-Sound** (sound absorbing) **\$66**

**NOTE:** Standard with Black Plastic Glide with white nylon tip – multi-purpose  
Must specify mesh color

Finish	List Price Grades COM/COL	A	B	C	D	E	F	G	H	I	J	K	L
-CH Chrome	<b>724</b>	<b>746</b>	<b>768</b>	<b>790</b>	<b>812</b>	<b>834</b>	<b>856</b>	<b>878</b>	<b>900</b>	<b>922</b>	<b>944</b>	<b>966</b>	<b>988</b>
-BL Black													
-SI Silver													
-MB Matte Black													
-MS Matte Silver													
-MW Matte White													

<b>MI-Cart</b>	Hand Cart	Outside	22	29	41 <sup>1</sup> / <sub>2</sub>	55.9	73.7	105.4
----------------	-----------	---------	----	----	--------------------------------	------	------	-------



Shipping Weight approx 38 lbs

Steel frame with upholstered deck and rubber grips  
Holds ten veneer or eight upholstered chairs.

List Price

Finish	List Price
-BL Black	<b>959</b>