

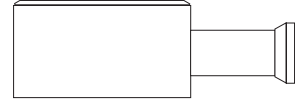
Notes:

Job:

Type:

FORM 10 SQUARE

BE/WE/BH/WH/BHT/WHT WALL MOUNT



GENERAL DESCRIPTION: The Gardco wall mounted Square Form 10 products are cutoff luminaires for high intensity discharge lamps up to 875 watts. BE and WE units are manufactured from mitered extruded aluminum and finished in an Architectural Class 1 anodizing. The BH and WH luminaires are dieformed aluminum with a thermoset polyester finish. Both products can accept one of four (4) interchangeable and rotatable precision segmented optical systems.

CUTOFF PERFORMANCE: Flat glass lens luminaires provide full cutoff. Sag Lens luminaires provide cutoff performance.

ORDERING

PREFIX	CONFIGURATION	DISTRIBUTION	WATTAGE	VOLTAGE	FINISH	OPTIONS

Enter the order code into the appropriate box above. Note: Gardco reserves the right to refuse a configuration. Not all combinations and configurations are valid. Refer to notes below for exclusions and limitations. For questions or concerns, please consult the factory.

PREFIX

Wall Mount with Arm

BE14	14" Square Extruded Luminaire
BE19	19" Square Extruded Luminaire
BH14	14" Square Fabricated Luminaire
BH19	19" Square Fabricated Luminaire
BHT19	19" Tall Square Fabricated Luminaire

Wall Mount without Arm

WE14	14" Square Extruded Luminaire
WE19	19" Square Extruded Luminaire
WH14	14" Square Fabricated Luminaire
WH19	19" Square Fabricated Luminaire
WHT19	19" Tall Square Fabricated Luminaire

CONFIGURATION

- 1 Single Assembly

DISTRIBUTION

Horizontal Lamp

- 1 Type I
3 Type III
4X^{1,2} Type IV (19"/T19" only)
FM Type IV

Vertical Lamp

1. 19" and T19" luminaires, 400w and below are supplied with flat glass lens standard. For wattages above 400w, "XF" flat lens is supplied standard.
2. MH/PSMH 400w Type 4X luminaires require the E28/BT28 reduced jacket lamp.

WATTAGE

14"	19"	T19"
100MH ³	250MH	750PSMH ⁶
150MH ³	400MH	875PSMH
175MH		
200MH	250PSMH	750HPS
250MH	320PSMH ⁵	
	350PSMH ⁵	
100HPS	400PSMH	
150HPS ⁴		
	250HPS	
	400HPS	

3. Medium base lamp.
4. Operates 55V lamp.
5. Requires E28/BT28 lamp.
6. M149 only. Horizontal optics require MS750/PS/BU/HOR/BT37 lamp.

VOLTAGE

120	240	347	QUAD
208	277	480	120/208/240/277, Factory tied to 277V.

MH	Metal Halide
PSMH	Pulse Start Metal Halide
HPS	High Pressure Sodium

FINISH

BE and WE

- BLA** Black Anodized
BRA Bronze Anodized
NA Natural Aluminum Anodized
OC Optional Color Paint
Specify RAL designation ex: OC-RAL7024.
SC Special Color Paint
Specify. Must supply color chip.

BH/BHT and WH/WHT

- BRP** Bronze Paint
BLP Black Paint
OC Optional Color Paint
Specify RAL designation ex: OC-RAL7024.
SC Special Color Paint
Specify. Must supply color chip.

OPTIONS

- F** Fusing In Head
PC Photocontrol and Receptacle
N/A with 480V.
PCR Photocontrol Receptacle only
POLY Polycarbonate Sag Lens
In lieu of flat glass. N/A with 4X optics.
450w maximum.
XF Extended Flat Glass Lens
Flat Glass lens with extended drop. Allows for the use of a larger lamp while providing full cutoff performance. T19 supplied standard with horizontal lamp optics above 400w.
SG Sag Glass Lens In lieu of flat glass
- HS** Internal Houseside Shield
Supplied standard with FM optics.
QS Quartz Standby
QS Quartz Standby - Timed Delay
CD Clear Drop Diffuser Extruded Styles only.
UB Quick Disconnect for Ballast Tray

Gardco Lighting reserves the right to change materials or modify the design of its product without notification as part of the company's continuing product improvement program. The 4X optical system is protected by U.S. patent number 5690422.

© Copyright Gardco Lighting 2001-2007. All Rights Reserved. International Copyright Secured.

Genlyte Group

Gardco Lighting
1611 Clovis Barker Road
San Marcos, TX 78666

(800) 227-0758
(512) 753-1000
FAX: (512) 753-7855
www.sitelighting.com



FORM 10 SQUARE

BE/WE/BH/WH/BHT/WHT WALL MOUNT

SPECIFICATIONS

GENERAL: Each Gardco Square Form Ten wall mount is a cutoff luminaire for high intensity discharge lamps. Direct mount (WE and WH) and arm mounted (BE and BH) styles are offered. Internal components are totally enclosed, rain-tight, dust-tight and corrosion resistant. No venting of optical system or electrical components is required or permitted. Luminaires are completely assembled with no disassembly required for installation. Lamping requires no lifting or hinging the luminaire housing, disturbing wiring or exposing uninsulated live parts.

HOUSING: Extruded housings (WE and BE styles) are composed of precisely mitered anodized aluminum extrusions. Fabricated (WH and BH styles) units are one piece, multi-formed aluminum with an integral reinforcing spline and a single concealed joint. All units feature a press formed aluminum top which is welded to the housing sides. Pressure injected silicone provides a continuous weathertight seal at all miters and points of material transition.

WALL BRACKETS: All models include hooking die cast aluminum wall bracket that conceals 10 gauge mounting plate. BE and BH series include extruded arm to extend unit from wall.

LENS: Mitered, extruded anodized aluminum door frame retains the optically clear, heat and impact resistant tempered flat glass in a sealed manner using hollow section, high compliance, memory retentive extruded silicone rubber. Concealed stainless steel latch and hinge permit easy toolless access to the luminaire.

OPTICAL SYSTEMS: The segmented Form Ten optical system is homogeneous sheet aluminum, electrochemically brightened, anodized and sealed. The segmented reflectors are set in faceted arc tube image duplicator patterns to achieve IES Types I (1), III (3),

and IV (FM and 4X) distributions. The mogul base lampholder is glazed porcelain with a nickel plated screw shell with lamp grip-all securely attached to the reflector assembly. 100 MH units have medium base lampholder. All Metal Halide units in the 19" housings have lamp stabilizers ensuring precise arc tube positioning.

ELECTRICAL: Each high power factor ballast is the separate component type, capable of providing reliable lamp starting down to -20°F/-29°C. The ballast is mounted on a unitized tray and secured within the luminaire, above the reflector system. Component-to-component wiring within the luminaire will carry no more than 80% of rated current and is listed by UL for use at 600 VAC at 301°F/150°C or higher. Plug disconnects are listed by UL for use at 600 VAC, 15A or higher.

FINISH: Extruded housings (WE and BE styles) are standard with natural, bronze, or black Aluminum Association Architectural Class I anodized finish applied after fabrication. Special color polyurethane finishes are available.

Formed housings (WH and BH styles) are standard with a chromate acid pretreatment and an epoxy undercoat. The finish coat is a thermosetting polyester baked at 450°F/232°C to achieve an H-2H hardness measure.

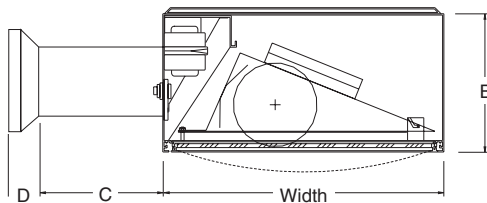
LABELS: All luminaires bear UL or CUL (where applicable) Wet Location labels.

FULL CUTOFF PERFORMANCE: Full cutoff performance means a luminaire distribution where zero candela intensity occurs at an angle of 90° above nadir. Additionally, the candela per 1000 lamp lumens does not numerically exceed 100 (10 percent) at a vertical angle of 80° above nadir. This applies to all lateral angles around the luminaire.

CUTOFF PERFORMANCE: Cutoff performance means a luminaire distribution where the candela per 1000 lamp lumens does not numerically exceed 25 (2.5 percent) at an angle at or above 90° above nadir, and 100 (10 percent) at a vertical angle of 80° above nadir. This applies to all lateral angles around the luminaire.

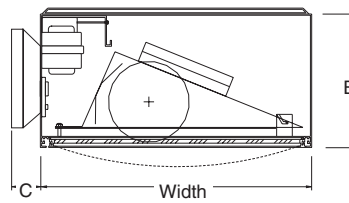
DIMENSIONS

BE/BH/BHT

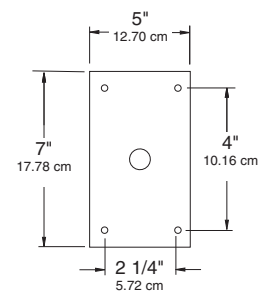


Size	Width	B	C	D
14	14"	7"	6"	2"
	35.56 cm	17.78 cm	15.24 cm	5.08 cm
19	19"	10"	9"	2"
	48.26 cm	25.40 cm	22.86 cm	5.08 cm
T19	19"	12"	9"	2"
	48.26 cm	30.48 cm	22.86 cm	5.08 cm

WE/WH/WHT



Size	Width	B	C
14	14"	7"	2"
	35.56 cm	17.78 cm	5.08 cm
19	19"	10"	2"
	48.26 cm	25.40 cm	5.08 cm
T19	19"	12"	2"
	48.26 cm	30.48 cm	5.08 cm



Wall Mounting Dimensions

Gardco Lighting reserves the right to change materials or modify the design of its product without notification as part of the company's continuing product improvement program. The 4X optical system is protected by U.S. patent number 5690422.

© Copyright Gardco Lighting 2001-2007. All Rights Reserved. International Copyright Secured.

Genlyte Group

Gardco Lighting
1611 Clovis Barker Road
San Marcos, TX 78666

(800) 227-0758
(512) 753-1000
FAX: (512) 753-7855
www.sitelighting.com



79115-44/0607