

HPV LUMINAIRE

HIGH PERFORMANCE VERTICAL LAMP



CLASSIC GARDCO FEATURES

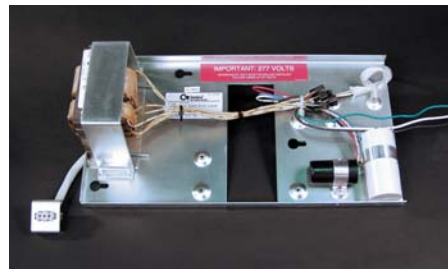
The Gardco HPV High Performance Vertical is the latest in high wattage, high performance, large area luminaires from Gardco Lighting. The HPV23 includes all the classic features and benefits you've come to expect from Gardco Lighting luminaires.

The housing is constructed from high quality fabricated aluminum, fully sealed and gasketed to prevent intrusion from dirt, insect or other contaminants.



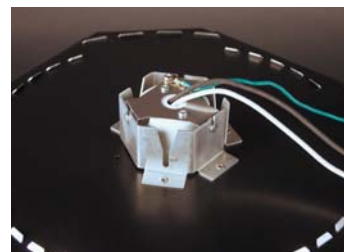
Toolless Luminaire Access

The door frame is natural anodized extruded aluminum with the memory retentive extruded silicone gasket system proven in more than 20 years of use in Gardco Lighting products. The stainless steel hinge provides complete access to the housing without the need for tools. The fully rotatable optical system hinges down, providing complete access to the unitized ballast tray.

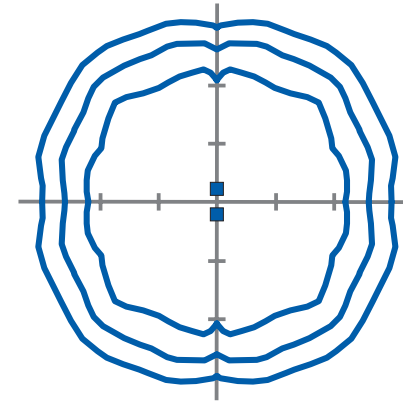


Easily Converted in the Field

Luminaires are converted from full cutoff to cutoff by simply changing the lens and socket position. For a full cutoff luminaire, a flat glass lens assembly is needed, with the lamp socket placed in the upper position. For maximum performance in a cutoff luminaire, the HPV utilizes a sag glass lens combined with the socket placed in the lower position. Conversion does not require replacement of the reflector assembly or housing.



DARK SKY FRIENDLY



The Gardco HPV23 features the new Gardco Form 10XV optics and is available in IES Type V and Type III distributions. Form 10XV optics feature patented Gardco Form 10X technology applied to vertical lamp luminaires. The result is excellent performance, especially in a flat glass, full cutoff luminaire.

Utilizing a flat glass lens, the Gardco Form 10XV optics make it possible to economically cover large areas, such as retail shopping centers, while improving site visibility and minimizing light trespass and light pollution.

If glare is less of a concern, the Form 10XV optics perform remarkably with the socket placed in the lower position. These sag lens versions feature only a minimal 2" depth below the housing and meet IES criteria for a Cutoff Luminaire.



If site requirements dictate that light be severely restricted at the property line, specify the new Gardco external house side shield for the HPV23.

This innovative shield follows the luminaire aperture, rather than the pole, to provide a minimized shield profile and Effective Projected Area (EPA) while providing maximum rear light cutoff. The side slots assure that maximum lateral throw is not compromised so that luminaire spacing along the perimeter can be as wide as possible. Best of all, the external house side shield can be installed on either a sag lens or a flat glass lens door frame, and can easily be added in the field, if necessary.



SPECIFICATIONS

GENERAL: Each Gardco HPV Luminaire is a sharp cutoff luminaire for high intensity discharge lamps. Internal components are totally enclosed, rain-tight, dust-tight, and corrosion resistant. No venting of the optical system or electrical components is required or permitted. Lamping requires no lifting or hinging of the luminaire housing, disturbing wiring or exposing uninsulated live parts.

HOUSING: The housing wrapper is one-piece dieformed aluminum with an integral reinforcing spline and no welded corners. Silicone seals provide a weathertight seal at all points of material transition.

ARM: Extruded aluminum arm is prewired and secured to fixture by contractor.

LENS: A mitered, extruded anodized aluminum door frame retains the optically clear, heat and impact resistant tempered flat glass in a sealed manner using hollow section, high compliance, memory retentive extruded silicone rubber. A sag glass lens is provided on vertical lamp cutoff luminaires and a flat glass lens is provided on vertical lamp full cutoff luminaires. Stainless Steel spring hinge pins permits access to the luminaire without tools.

OPTICAL SYSTEMS: The segmented reflector system consists of highly specular aluminum facets precisely aligned to achieve specified photometric distributions. The entire optical system is field rotatable in 90° increments without tools.

Optical systems feature a field adjustable lamp socket. In the lower socket position, optics provide a cutoff distribution, and require a sag glass lens. When the socket is in the upper position, with a flat glass lens, the optics provide a distribution meeting IES Full Cutoff.

Luminaires ship from the factory with the socket in the upper position.

Luminaires ordered with the 5XVF and 3XVF optical systems ship from the factory with a standard flat glass lens and door frame. Luminaires ordered with the 5XVS and 3XVS optical systems ship from the factory with a standard sag glass lens and door frame.

Luminaires are easily converted in the field by changing the lens and socket position. For a flat glass full cutoff luminaire, a flat glass lens and door frame with the socket in the upper position are needed. For a sag glass cutoff luminaire, a sag glass lens and door frame with the socket in the lower position are required. Maximum performance with a sag glass lens requires the socket to be placed in the lower position. Conversion does not require replacement of the reflector assembly.

ELECTRICAL: Each high power factor ballast is the separate component type capable of providing reliable lamp starting to -20°F. Entire ballast assembly is secured within the luminaire, above the reflector system. Metal Halide ballasts are medium regulation autotransformer providing +10% power regulation with +10% variation from rated input voltage. Component-to-component wiring within the luminaire will carry no more than 80% of rated current and is listed by UL for use at 600 VAC at 150° or higher. Plug disconnects are listed by UL for use at 600 VAC, 15A or higher.

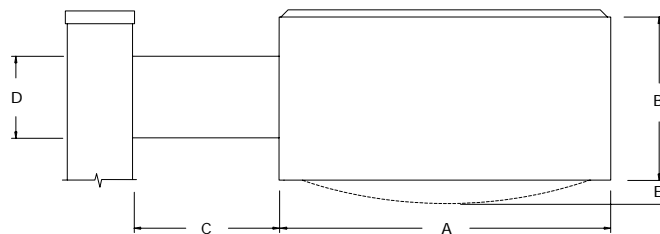
FINISH: Each luminaire receives a fade and abrasion resistant, electrostatically applied, thermally cured, triglycidic isocyanurate (TGIC) powdercoat finish.

LABELS: All luminaires bear UL or CUL (where applicable) Wet Location labels.

ORDERING

PREFIX	CONFIGURATION	DISTRIBUTION	WATTAGE	VOLTAGE	FINISH	OPTIONS
HPV23	1	5XVF	400PSMH	277	BRP	EHSS
HPV23	1 Single Assembly 2 Twin @ 180° 2@90 Twin @ 90° 3 Triple @ 90° 3@120 Triple @ 120° 4 Quad Assembly W Wall Mount	<u>Flat Lens (Full Cutoff)</u> 3XVF Type III 5XVF Type V <u>Sag Lens (Cutoff)</u> 3XVS Type III 5XVS Type V	400PSMH 750PSMH 1000PSMH 400HPS 750HPS	120 208 240 277 347 480	BRP Bronze Paint BLP Black Paint WP* White Paint NP* Natural Aluminum Paint OC* Optional Color Paint (Specify RAL designation as shown in Color Selection Guide. ex: OC-RAL7024) SC* Special Color Paint (Specify: Must supply color chip)	EHSS External House Side Shield LF In-Line Fusing
			PSMH - Pulse Start Metal Halide HPS - High Pressure Sodium			*Contact factory for availability of (WP), (NP), optional (OC) and Special (SC) Colors

DIMENSIONS



Width	B	C	D	E	
23"	14.5"	12"	8"	2"	
58.42 cm	36.83 cm	30.48 cm	20.32 cm	5.08 cm	
		EPA's (ft²)		Approximate Weight (lbs)	
		Single	Twin	3/4	Single
Sag Lens	3.9	7.8	9.5	104 lbs	
Flat Lens	3.6	7.3	8.8	90 lbs	

Gardco Lighting reserves the right to change materials or modify the design of its product without notification as part of the company's continuing product improvement program.

© Copyright Gardco Lighting 2004. All Rights Reserved. International Copyright Secured.

2661 Alvarado Street
San Leandro, CA 94577
800/227-0758
510/357-6900 in California
Fax: 510/357-3088
<http://www.sitelighting.com>

Genlyte Thomas Group LLC

