

Notes:

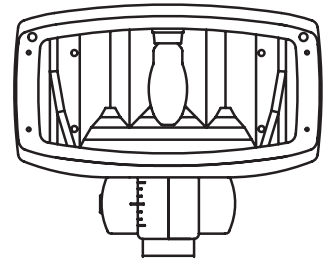
Job:

Type:

DESIGNER FLOOD

DF7 - 7" DIAMETER

GENERAL DESCRIPTION: The Gardco DF7 is a flood luminaire with a choice of (5) precision faceted optical systems. Each is designed to provide a specific distribution and sharp cutoff of stray light. The contemporary soft form diecast housing is available in a variety of finishes creating compatibility with most architectural and landscape elements. The high strength diecast aluminum knuckle features an integral splice compartment eliminating the need for a supplementary junction box and thereby permitting closer to grade mounting.



ORDERING

PREFIX	MOUNTING	DISTRIBUTION	WATTAGE	VOLTAGE	FINISH	OPTIONS
<input type="text"/>	<input type="text"/>	<input type="text"/>	<input type="text"/>	<input type="text"/>	<input type="text"/>	<input type="text"/>

Enter the order code into the appropriate box above. Note: Gardco reserves the right to refuse a configuration. Not all combinations and configurations are valid. Refer to notes below for exclusions and limitations. For questions or concerns, please consult the factory.

PREFIX

DF7

MOUNTING

C	Stub-up Conduit Mount. For direct mounting to (2) 1/2" (1.27cm) or 3/4" (1.91cm) GRC or IMC conduits. No j-box required. Must use factory supplied mounting insert when setting stub-ups.
J	J-Box Mount. For mounting into 1/2" (1.27cm) hub. Also suitable for direct surface mount to walls or ceilings when fed by EMT, BX, SJO, NM, etc. (For surface mount over outlet box, specify W or W90 mount).
W	Wall/Ceiling Canopy Mount. For mounting over (not to) a 4" recessed outlet box. When mounted on vertical surface, provides vertical aiming from straight down to 100° up from nadir. When mounted on a vertical surface, long axis of luminaire must be horizontal (+/-30°). Mounts directly to wall or ceiling. The surface structure must be suitable to support the luminaire. Only suitable for use on non-combustable surfaces.
WMB	Wall Mount with Bullhorn. For mounting over (not to) a 4" (10.16cm) recessed outlet box. Provides full axial 180° vertical and 358° rotational aiming range. Mounts direct to wall. Surface structure must be suitable to support the luminaire. When mounted in wet locations, luminaire must be mounted as shown in diagrams on opposite page.
W90	Wall Arm Mount. For mounting over (not to) a 4" (10.16cm) recessed outlet box. Provides full axial 180° vertical and 358° rotational aiming range. Mounts direct to wall. Surface structure must be suitable to support the luminaire. When mounted in wet locations, luminaire must be mounted as shown in diagrams on opposite page. In damp or dry locations, arm assembly may be inverted.
ST	Stanchion Mount. 18" (45.72cm) stanchion for in-ground concrete burial mounting.
SM	Surface Mount Stanchion. For mounting to 18" (45.72cm) stanchion pole assembly.

DISTRIBUTION

HFL	Horizontal Flood N/A w/250w
VFL	Vertical Flood
HSP	Horizontal Spot
NSP	Narrow Spot
FLM	Fluorescent Medium Available with fluorescent wattages only.

WATTAGE

70HPS	70MH	26QF^{2,3}
100HPS	100MH	32TRF^{2,3}
150HPS	150MH	42TRF^{2,3}
	175MH	70CF^{2,3}
	250MH¹	

- 250MH Uses ED-18 or T15 Mogul Base Lamps. N/A w/HFL Distribution, or PCB, POLY, F or ESB options.
- Available with FLM optic only.
- Fluorescent luminaires feature electronic ballasts that accept 120V through 277V, 50hz to 60hz, input. Specify "UNIV" voltage for 120V through 277V.

VOLTAGE

120
208
240
277
347 Not available in 250MH
UNIV Fluorescent only.

FINISH

BRP	Bronze Paint	OC	Optional Color Paint Specify RAL designation ex: OC-RAL7024.
BLP	Black Paint		
WP	White Paint	SC	Special Color Paint Specify. Must supply color chip.
NP	Natural Aluminum Paint		
BGP	Beige Paint		
VP	Verde Green Paint		

OPTIONS

PCB	Button Type Photocontrol N/A w/250w.
BD*	Barn Doors
CH*	Cutoff Hood *Barn Doors (BD) and Cutoff Hoods (CH) are painted to match the luminaire. Either can be used concurrently with the POLY option.
POLY	Polycarbonate Shield N/A w/250w. N/A with WG option.
F	Fusing 120V through 277V only. N/A w/250w.
ESB	Extended Splice Box Supplied standard w/250w. Not available for use as additional splicing volume in 250w.
WG	Wire Guard N/A with BD, CH and POLY options. Field Installable.

ADDITIONAL MOUNTING ACCESSORIES:

PTA	Pole top 2 3/8" (6.03cm) tenon adapter
TAB	Twin arm bracket for use with ST or PTA
PT2	Pole top 2 3/8" (6.03cm) tenon adapter for twin back to back luminaire mounting.

DF7 Splice Compartment Wire Capacity				DF7 Pole Loading Data	
	Standard Units	Extended Splice Box	250 W Units		EPA
#12 AWG Conductors ³	5	9	5	Single Luminaire on PTA Adapter	1.3 ft ² /1.12m ²
#10 AWG Conductors ³	3	7	3	Twin Luminaires on PT2 Adapter	1.9 ft ² /1.8m ²
3. Including ground				Twin Luminaires on TAB Adapter	2.8 ft ² /2.6m ²

Gardco Lighting reserves the right to change materials or modify the design of its product without notification as part of the company's continuing product improvement program.

© Copyright Gardco Lighting 2001-2007. All Rights Reserved. International Copyright Secured.

A Genlyte Company

Gardco Lighting
1611 Clovis Barker Road
San Marcos, TX 78666

(800) 227-0758
(512) 753-1000
FAX: (512) 753-7855
www.sitelighting.com



79115-73/0607

DESIGNER FLOOD

DF7 - 7" DIAMETER

SPECIFICATIONS

HOUSING: A single-piece aluminum housing is cast in a soft barrel form. A one piece extruded gasket mates with door frame.

DOOR/LENS ASSEMBLY: A heat and impact resistant 3/16" (.48cm) tempered glass lens and one piece silicone gasket are mechanically secured to door frame.

KNUCKLE: The diecast aluminum knuckle features an integral splice compartment. A single captive 3/16" (.48cm) stainless steel allen-head bolt and stainless steel nut securely lock the knuckle aiming teeth in 5° increments. An opposite cover plate is removable for access to splices. The knuckle assembly is fully gasketed.

OPTICAL SYSTEM: The wide flood, vertical flood and horizontal spot optical systems are homogenous sheet and extruded aluminum, electrochemically brightened, anodized and sealed. The narrow spot reflector is hydroformed faceted Alzak® aluminum.

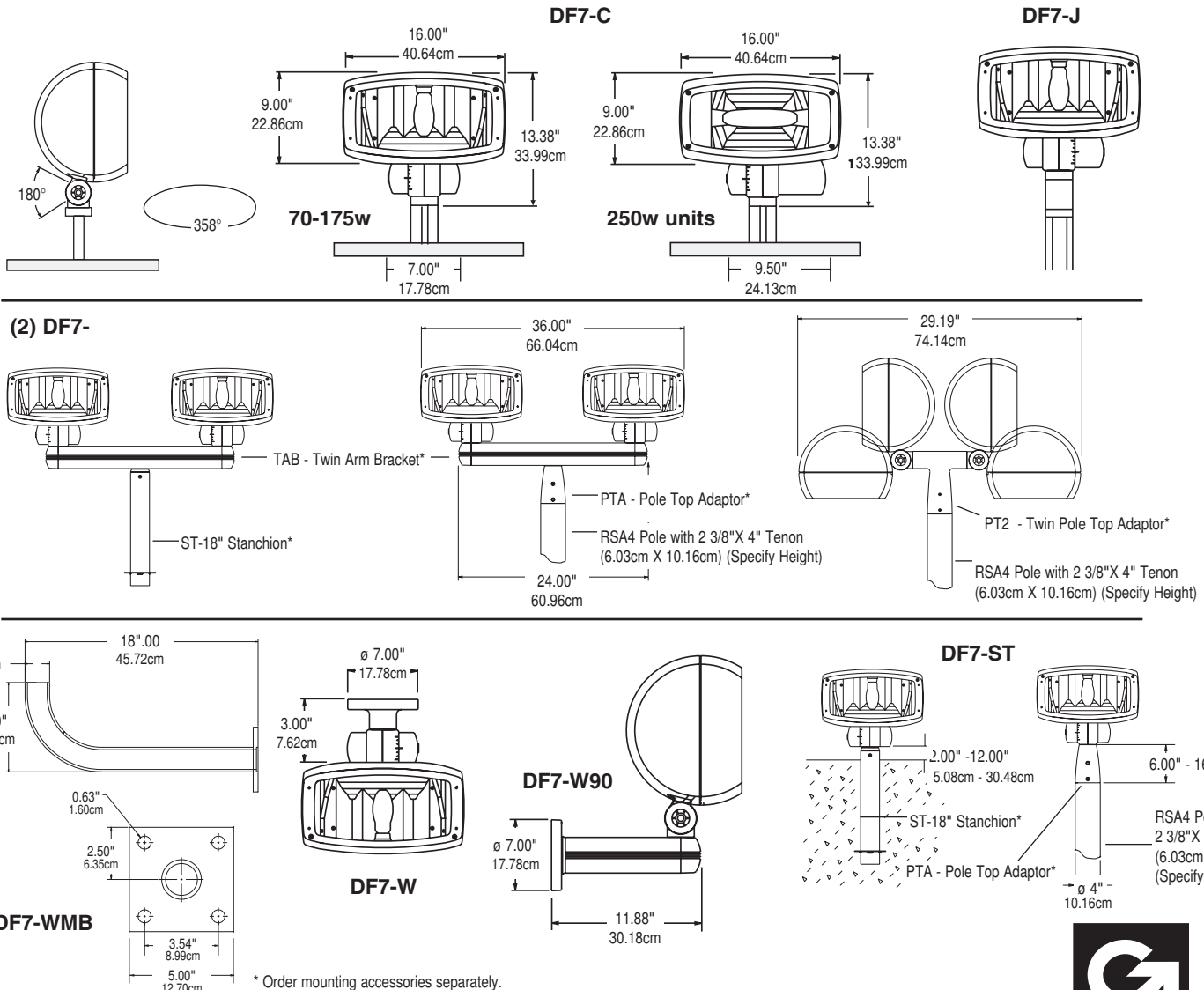
ELECTRICAL: HID UNITS: Each high power factor ballast is the separate component magnetic type capable of providing reliable lamp starting to -20°F/-29°C. FLUORESCENT UNITS: High power factor ballast standard. Accepts 26w Quad tube, 32w Triple Tube and 70w circular lamps

LAMPHOLDER: The pulse rated socket is glazed porcelain with nickel plated screw shell. All sockets are medium base except 250W metal halide units.

FINISH: Each luminaire receives a fade and abrasion resistant, electrostatically applied, thermally cured textured, polyester powdercoat finish.

LABELS: All luminaires bear UL or CUL (where applicable) Wet Location labels.

DIMENSIONS AND MOUNTING DETAIL



Gardco Lighting reserves the right to change materials or modify the design of its product without notification as part of the company's continuing product improvement program.

© Copyright Gardco Lighting 2001-2007. All Rights Reserved. International Copyright Secured.

A Genlyte Company

Gardco Lighting
1611 Clovis Barker Road
San Marcos, TX 78666

(800) 227-0758
(512) 753-1000
FAX: (512) 753-7855
www.sitelighting.com

