

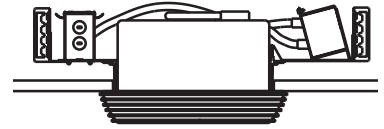
Notes:

Job:

Type:

# DESIGNER CANOPY

## 220EM/221EM SERIES RECESSED EMERGENCY LUMINAIRES



**GENERAL DESCRIPTION:** The Gardco Designer Canopy Emergency Luminaire is a family of downlight and wall wash ceiling mounted fixtures utilizing compact fluorescent lamps. The contemporary form housing is available in a variety of architectural finishes assuring compatibility with the building. Downlight optical systems are offered with prismatic or fresnel lenses and the wall washer is offered with a prismatic lens. The Designer Canopy Luminaire is suitable for outdoor applications and features rugged diecast construction, silicone seals and gaskets, and polyester powdercoat finishes.

### ORDERING

PREFIX	DISTRIBUTION	WATTAGE	VOLTAGE	FINISH	OPTIONS
<input type="text"/>	<input type="text"/>	<input type="text"/>	<input type="text"/>	<input type="text"/>	<input type="text"/>

Enter the order code into the appropriate box above. Note: Gardco reserves the right to refuse a configuration. Not all combinations and configurations are valid. Refer to notes below for exclusions and limitations. For questions or concerns, please consult the factory.

### PREFIX

**220EM** Emergency Downlight  
**221EM** Emergency Wall Wash

### DISTRIBUTION

**P** Prismatic Lens

### WATTAGE

**42TRF**

### VOLTAGE

**120**  
**277**

*TRF Triple Tube Compact Fluorescent*

### FINISH

**BRP** Bronze Paint  
**BLP** Black Paint  
**WP** White Paint  
**NP** Natural Aluminum Paint  
**BGP** Beige Paint  
**OC** Optional Color Paint  
*Specify Optional Color or RAL  
 ex: OC-LGP or OC-RAL7024.*  
**SC** Special Color Paint  
*Specify. Must supply color chip.*

### OPTIONS

**RS** Tamper Resistant Hardware

Gardco Lighting reserves the right to change materials or modify the design of its product without notification as part of the company's continuing product improvement program.

© Copyright Gardco Lighting 2001-2007. All Rights Reserved. International Copyright Secured.

A Genlyte Company

**Gardco Lighting**  
 2661 Alvarado Street  
 San Leandro, CA 94577

800/227-0758  
 510/357-6900 in California  
 Fax: 510/357-3088  
[www.sitelighting.com](http://www.sitelighting.com)



79115-143/0907

# DESIGNER CANOPY

## 220EM/221EM SERIES RECESSED EMERGENCY LUMINAIRES

### SPECIFICATIONS

**GENERAL:** The Gardco Designer Canopy Emergency Luminaire utilizes 42W TRF compact fluorescent lamps. Housing is recessed in ceiling cavity and shallow trim assembly is surfaced mounted on canopy. Two downlight and one wall wash optical systems are available.

**HOUSINGS:** Housing assembly features diecast aluminum plaster flange, formed steel ballast tray, adjustable mounting brackets, and steel housing cover.

**TRIMS:** Diecast aluminum trim mechanically secures tempered glass lens. Hollow core, extruded silicone gaskets seal trim assembly to both housing and lens to permanently exclude insects, moisture, dust, and pollutants from luminaire.

**OPTICAL SYSTEMS:** The prismatic downlight lens creates an elongated lighting pattern.

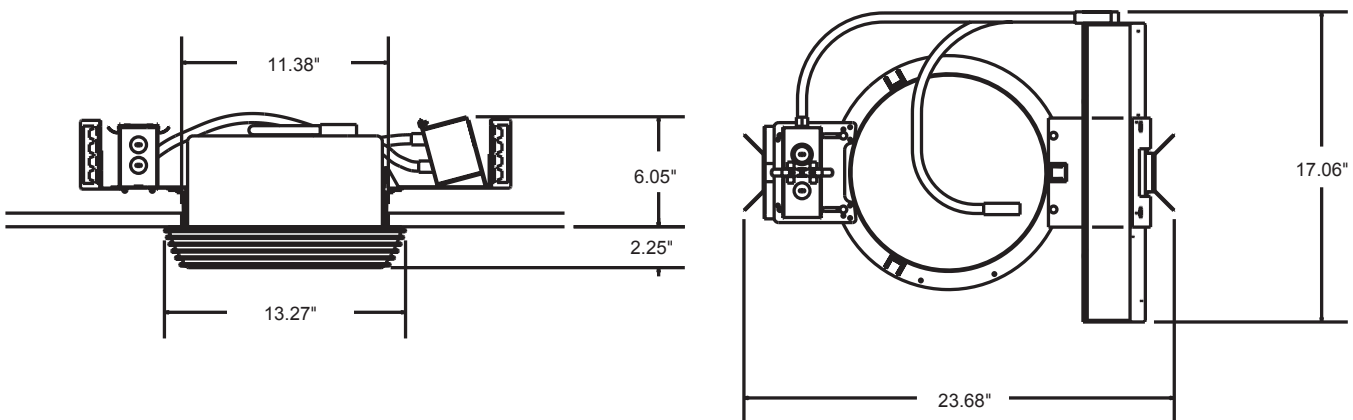
Prismatic wall wash distribution provides uniform illumination on adjacent vertical surfaces. Cutout side trim on the Designer Canopy Luminaire allows light pattern on the wall to reach the ceiling line.

**ELECTRICAL:** Electronic fluorescent ballasts are high power factor. Sockets are high temperature PBT with brass contacts. In the event of power interruption, integral battery pack will power (1) 42W compact fluorescent lamp at reduced light levels. Maintenance free battery is rated for ambient temperatures down to 0°C. Indicator light is visible through the lens. A test switch is accessible through the door assembly.

**FINISH:** Each luminaire receives a fade and abrasion resistant electrostatically applied, thermally cured, (TGIC) polyester powdercoat finish.

**LABELS:** All luminaires have UL or CUL (where applicable) Wet Location labels.

### DIMENSIONS



Gardco Lighting reserves the right to change materials or modify the design of its product without notification as part of the company's continuing product improvement program.

© Copyright Gardco Lighting 2001-2007. All Rights Reserved. International Copyright Secured.

A Genlyte Company

**Gardco Lighting**  
2661 Alvarado Street  
San Leandro, CA 94577

800/227-0758  
510/357-6900 in California  
Fax: 510/357-3088  
[www.sitelighting.com](http://www.sitelighting.com)

