

ADJUSTABLE SLIDE BY SIDE MICRO-STAGGERED CHANNEL® T5/

Series **1635**

APPLICATIONS

Adjustable "SLIDE BY SIDE" MICRO-STAGGERED CHANNEL® Series 1635 offers the specifier the smallest integral ballasted electronic staggered channel. This Ultra Low Profile adjustable design opens new vistas and allows greater flexibility for the designer heretofore only accomplished with strips with remote ballast. The Micro compact design occupies minimum space providing high lumen output, T5 or T8 lamps, energy and installation saving, and impressive color rendering availability. Quality components, welded construction, post powder coated finish, assuring a long trouble free life.



SPECIFICATIONS

CONSTRUCTION: 20 gauge cold rolled prime steel, die formed and electrically welded to insure true and perfect alignment.

MOUNTING: For individual or continuous mounting, 7/8" dia. (22mm) end knockouts may be removed and units joined together, 7/8" dia. (22mm) knockouts and 1/4" dia. (6mm) mounting holes provided on back.

ELECTRICAL: 1 and 2 lamp T5 electronic quick start 460 MA for 14W, 21W, and 28W and 460MA to 300MA for 24W, 39W, and 54W-T5HO. Or 1 and 2 lamp Optic T8, 265MA electronic instant start ballasts. High Power Factor, Class A sound rated, <10% THD (less than 10% Total Harmonic Distortion). U.L., CSA, FCC Listed Type 1 for 118 volt 60 Hz operation. Other voltages and frequencies available. CONSULT FACTORY.

FINISH: All steel component parts are completely protected against rust and discoloration after fabrication through an automated conveyorized multi-stage phosphate bonding process. Finished with an electrostatic baked white polyester thermosetting powder coating. This electronic computer controlled integrated system assures consistent 88%+ reflectance efficiency and maximum durability.

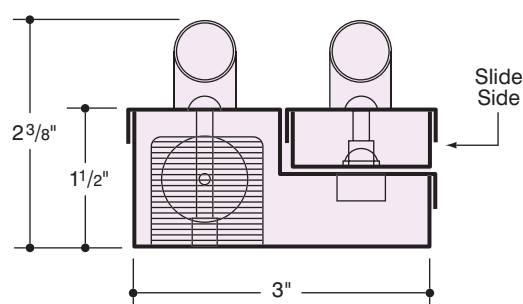
CERTIFICATION: The MICRO-STAGGERED CHANNEL® SLIDE BY SIDE Series 1635 is U.L. and C.U.L. listed and bears the label of the I.B.E.W./ AFL-CIO, Local #3. Optionally listed for damp locations "DL".

Due to the very nature of coves and enclosed areas, the heat ambience temperature must be considered when designing and installing in confined

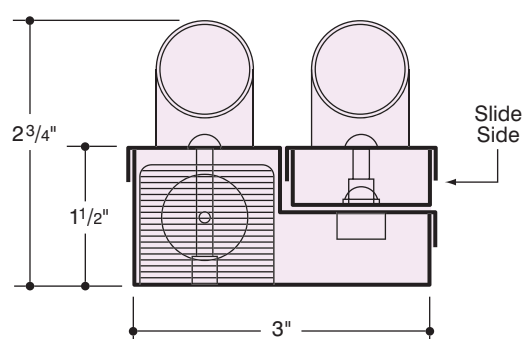
spaces, so that the spaces are adequately ventilated to provide heat dissipation and air circulation to prevent ballast cycling, failure, or reduced ballast and lamp life.

MICRO STAGGERED CHANNEL®, and LEGION® are registered trademarks of LEGION LIGHTING CO., INC.

T5 Lamps



T8 Lamps



1/08

Section C - Page 46q.1

LEGION®
LIGHTING CO., INC.

221 Glenmore Ave., Brooklyn, NY 11207 • Tel: 718/498-1770 • Fax: 718/498-0128
E-mail: sales@legionlighting.com • Website: www.legionlighting.com • Toll Free Tel: 800/4-LEGION

ORDERING DATA

Catalog No.		No. & Type Lamps	Nom. Length	Minimal Length	Maximum Extended Length	Wt. Lbs.
T5	1635-214	2-F14-T5	2 ft.	22 3/8"	31"	8
	1635-224HO	2-F24HO-T5				
	1635-221	2-F21-T5	3 ft.	34 1/4"	49"	10
	1635-239HO	2-F39HO-T5				
	1635-228	2-F28-T5	4 ft.	46"	66 7/16"	12
	1635-254HO	2-F54HO-T5				
T8	1635-217 EBO	2-FO17-OCT	2 ft.	24 5/8"	35 3/8"	8
	1635-225 EBO	2-FO25-OCT	3 ft.	36 5/8"	53 3/8"	10
	1635-232 EBO	2-FO32-OCT	4 ft.	48 5/8"	70 7/8"	12

OCTRON™ is a registered trademark of SYLVANIA

OPTIONS

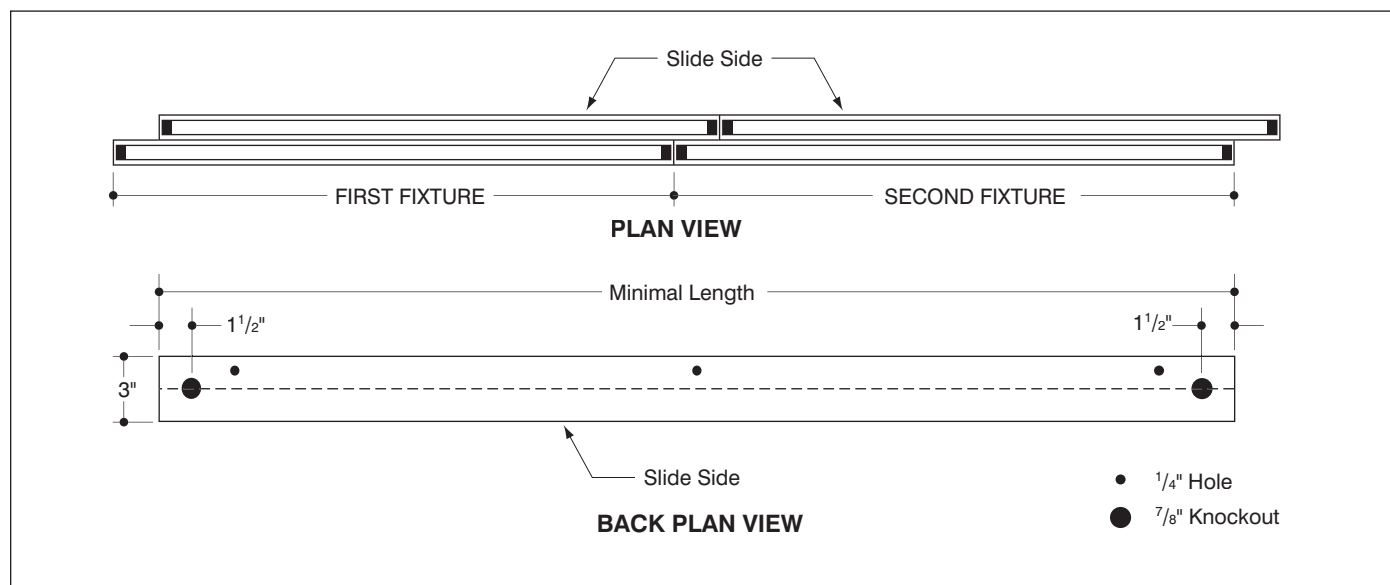
Suffix "DIM" after catalog no. for dimming ballast.

Suffix "LT" after catalog no. for cold weather ballast.

Suffix "EM" after catalog no. for emergency battery pack, see price list for types and consult factory.

Suffix "DL" after catalog no. for damp location.

PLAN VIEWS



FOR PHOTOMETRIC DATA CONSULT FACTORY
Information supplied primarily for illustrative purposes, subject to change.
Consult factory for verification and minimum quantity orders.