

Project:		
Type:	Prepared By:	Date:
Notes:		



SPECIFICATIONS

CONSTRUCTION: Precision formed 20 gauge cold rolled welded steel housing assembly. Diffuser hinges from either side in a lift and shift manner and is self centering. End caps may be butted together for continuous row mounting. Flattened knockouts are provided on the ends for flexible conduit attachment.

REFLECTOR/COMPONENT PLATE: Die formed of code gauge steel and mounted securely to the fixture housing. Reflector removable for installation and maintenance. Powder coated high reflectance white is standard. WhiteOptics® high diffuse, high reflectance reflector available, See OPTIONS.

ELECTRICAL: Long life replaceable LED, rated for 50,000 hours, with a high efficiency 0-10V electronic dimming driver, 120-277V, 50/60Hz operation. Other voltages, current and frequencies available, CONSULT FACTORY.

LED MODULE: Philips LED light engine, available in 3000°K, 3500°K, 4000°K and 5000°K @ L70 for 50,000 hours. Nominal lumen output options of 700,1100 and 2000 per foot result in multiple standard configurations. LM79 and LM80 Certified. Color temperature may affect total lumen output. CONSULT FACTORY for other lumen output options.

OPTICS: Wrap-around extruded clear .125 50% DR acrylic diffuser with prismatic bottom and ribbed linear sides, designed for high efficiency and visual comfort.

MOUNTING: Installed flush with ceiling surface or stem mounted, singly or in continuous rows. For continuous mounting, units can be joined together. Adequate knockouts for feed and stem or surface mounting are supplied. Optional sliding stem plate mounting.

FINISH: All steel component parts are completely protected against rust and discoloration after fabrication through an automated conveyerized multi-stage phosphate bonding process. Finished with an electrostatic baked white polyester thermosetting powder coating. This electronic computer controlled integrated system assures consistent 88%+ reflectance efficiency and maximum durability.

CERTIFICATION: The Series 4312L luminaire is U.L. and C.U.L. listed and bears the label of the I.B.E.W./AFL-CIO, Local #3.

		NOMINAL LUMENS/WATTS				
LUMEN LEVEL	LEDs	24"	36"	48"	72"	96"
LL1 (Normal)	1 Row	1400/12	2100/18	2800/24	4200/36	5600/48
	2 Rows	2800/24	4200/36	5600/48	8400/72	11200/96
LL2 (High)	1 Row	2200/14	3300/21	4400/28	6600/42	8800/56
	2 Rows	4400/28	6600/42	8800/56	13200/84	17600/112
LL3 (Very High)	1 Row	4000/30	6000/45	8000/60	12000/90	16000/120
	2 Rows	8000/60	12000/90	16000/120	24000/180	32000/240

Consult factory for latest specification as LED technology is frequently changing. Custom lumen packages available.

ORDERING INFORMATION

Example: 4312L 4 2 LL1 35 ACP UNV DL EM

SERIES	NOMINAL LENGTH	ROWS LED	LUMEN LEVEL	COLOR TEMP	LENS	VOLTAGE	OPTIONS
4312L	2 24"	1 1 Row	LL1 Normal	30 3000°K	ACP .125 50% DR acrylic	UNV 120-277V	WO WhiteOptics® reflector
	3 36"	2 2 Rows	LL2 High	35 3500°K	clear (standard)		XTA Xtralume® reflector
	4 48"		LL3 V. High	40 4000°K			DL Damp location
	6 72"		C Custom	50 5000°K			EM Emergency battery pack (consult factory)
	8 96"						AM Antimicrobial paint finish
							CC Custom color
							SAP Sliding stem plate
							PT Plug thru
							LSC Lens safety cable

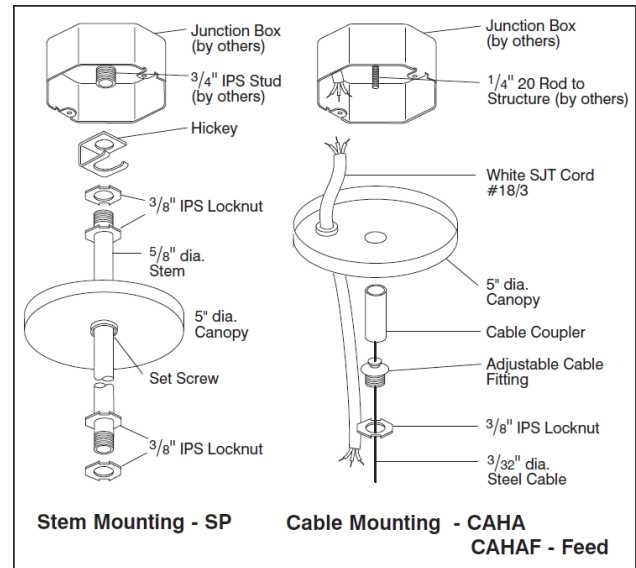
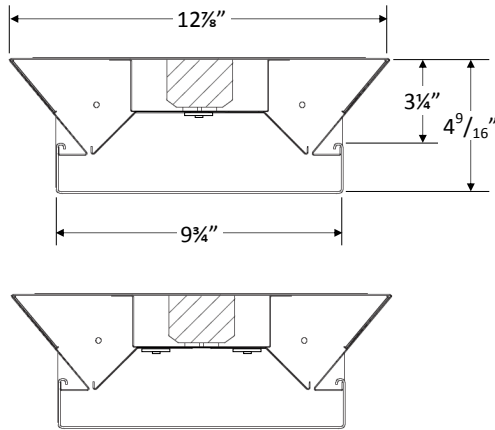


(Consult factory for other options or special requests)

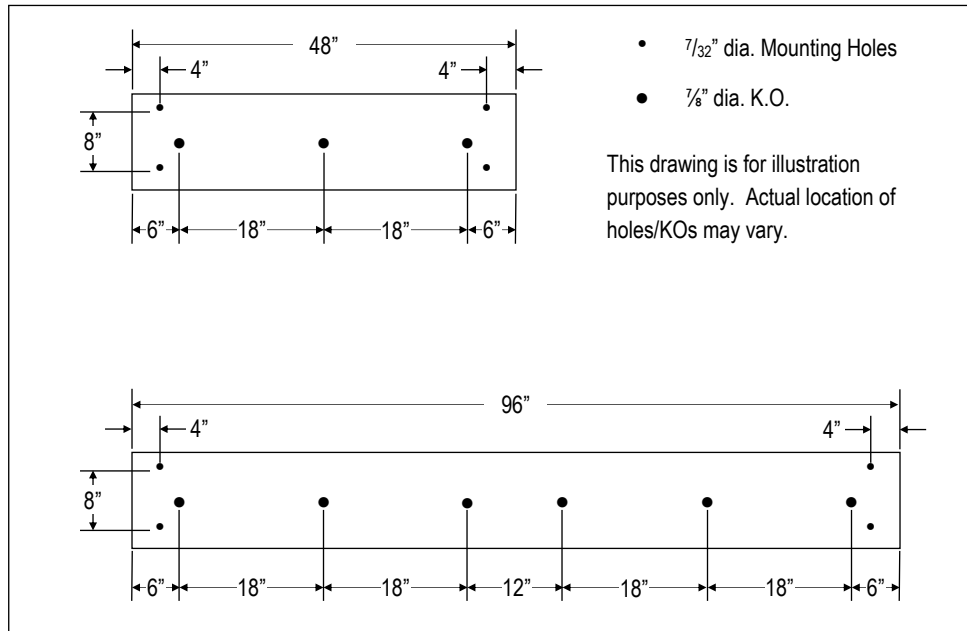
2015-12-09-4312L-LED

XTRALUME® and LEGION® are registered Trademarks of LEGION LIGHTING CO., INC.
WhiteOptics® is a registered Trademark of WhiteOptics LLC.

PENDANT OPTIONS - ORDER SEPARATELY



BACK DETAIL



PHOTOMETRICS - CONSULT FACTORY

2015-12-09-4312L-LED

XTRALUME® and LEGION® are registered Trademarks of LEGION LIGHTING CO., INC.
WhiteOptics® is a registered Trademark of WhiteOptics LLC.

©2015 Legion Lighting Co., Inc. All rights reserved. Specifications subject to change without notice.

221 Glenmore Avenue, Brooklyn, New York 11207 / Tel 718.498.1770 / www.legionlighting.com / sales@legionlighting.com