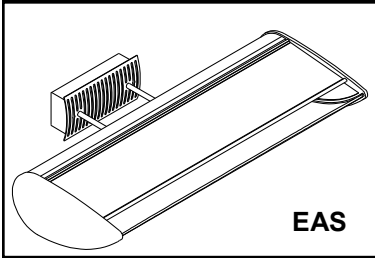


INDOOR ARCHITECTURAL LUMINAIRES

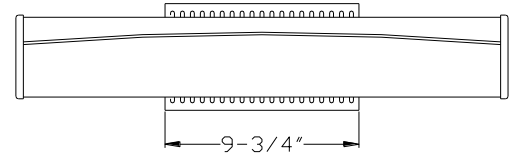
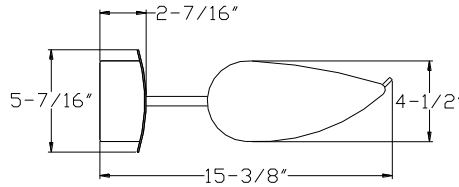
VAS—Medium Curve

EXTENDED ARM MOUNT
INTEGRAL ELECTRONIC BALLAST

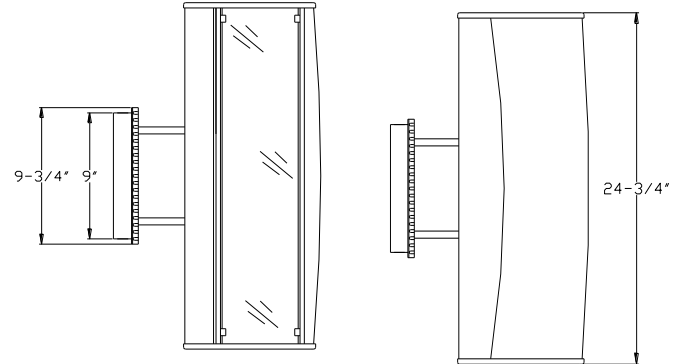
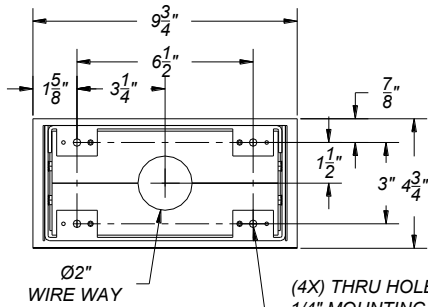
LONG TWIN TUBE FLUORESCENT
40W, 50W, 55W, & 80W



DIMENSIONS



MOUNTING BRACKET



ORDERING

(4X) THRU HOLES FOR
1/4" MOUNTING FASTENERS
(BY OTHERS)

FIXTURE	MOUNTING TYPE	VOLTS	FINISH	OPTIONS
Medium Curve Long Twin Tube Fluorescent Integral Electronic Ballast Single Lamp VCM583 (1)-F40W LTT (2G11) VCM585 (1)-F50W LTT (2G11) VCM587 (1)-F55W LTT (2G11) VCM589 (1)-F80W LTT (2G11) Twin Lamp VCM595 (2)-F50W LTT (2G11) VCM597 (2)-F55W LTT (2G11)	EAS <i>Extended Arm Mount</i> <i>Integral Electronic Ballast</i>	1=120V 2=277V 7=347V	W Semi-Gloss White BL Semi-Gloss Black BR Semi-Gloss Bronze N Semi-Gloss Natural S Semi-Gloss Satin* SF Specify Finish (See Color Chart) CC Custom Color (Contact Factory) For Textured Finish, Add "T" to Finish Selection* (e.g. TW = Textured White)	PG Custom Patterned Glass Fascia** WG Waffled Glass Fascia CEG Colored Etched Glass Fascia** CWG Colored Waffled Glass Fascia** PP Perforated Metal Fascia LP Custom Laser Design Metal Fascia SP Solid Aluminum Fascia (Painted To Match Luminaire) DM Fluorescent Dimming Ballast ** CM Column Mount **

ORDERING EXAMPLE: VCM585 / EAS / 1 / TBL / WG

* Textured Finish Not available for SATIN color

** Contact Factory For Details

SPECIFICATIONS

Housing End plates, surface mounting brackets and integral ballast housings are single piece die cast aluminum. The main housing is extruded aluminum. The standard glass fascia is .188" thick tempered molded etched glass. The fixture is shipped complete with ballast and pre-wired for installation. For use with a standard 4-0 j-box (by others). Additional structural backing is required (by others).

Reflector A patented two-tiered direct/ indirect reflector system constructed of 95% specular, peened aluminum.

Top Lens Luminaires are provided with micro prismatic tempered glass lenses secured to an anodized aluminum doorframe. Die-cast aluminum latches with stainless steel springs hinge in either direction allowing for tool-less re-lamping and maintenance.

Electrical: All fluorescent ballast are electronic, high power factor, thermally protected with THD of less than 10% and available in 120 and 277v. Dimming ballasts are an available option.

NOTE: The top lens is standard, not optional.

Labels: UL and CUL approved for installation in Damp Locations.



FIXTURE	MOUNTING TYPE	VOLTS	FINISH	OPTIONS

APPROVED: _____
 JOB NAME: _____
 TYPE: _____

Insight Lighting reserves the right to change specifications with out notice due to product improvements.

Rio Rancho, NM 87144
 TEL: 505 345-0888
 www.insightlighting.com

10/09/13

INSIGHT

