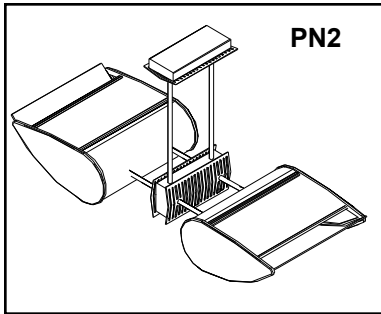


INDOOR ARCHITECTURAL LUMINAIRES

VAS—Large Curve

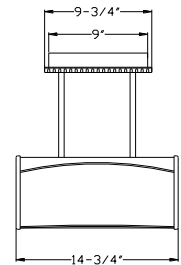
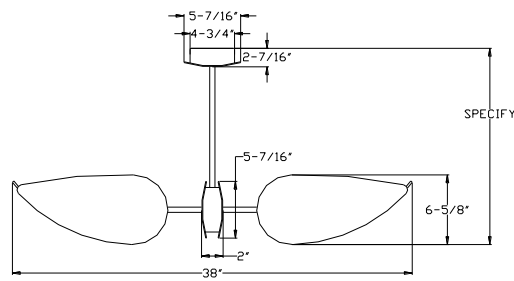
TWIN FIXTURE CLUSTER—PENDANT MOUNT
REMOTE BALLAST

CERAMIC METAL HALIDE

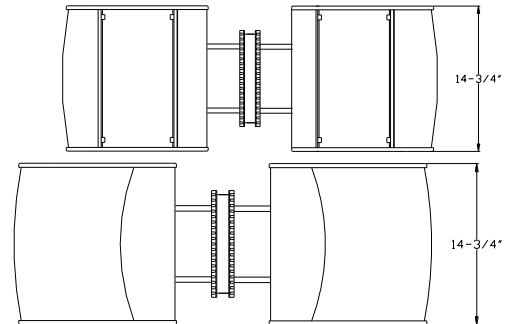
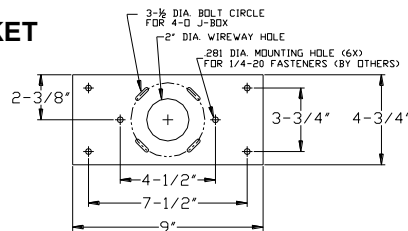


PN2

DIMENSIONS



MOUNTING BRACKET



ORDERING

FIXTURE	MOUNTING	VOLTS	FINISH	OPTIONS
Ceramic Metal Halide VCL971 (1)-210W CMH (T9 / PGZ18)* VCL973 (1)-315W CMH (T9 / PGZ18)* *208V thru 277V only	PN2-X Twin Fixture Cluster, Pendant Mount Remote Ballast X= Stem Length Min. 12" Contact factory for lengths over 8'	HID. 2. 277V 3. 208V 4. 240V	W Semi-Gloss White BL Semi-Gloss Black BR Semi-Gloss Bronze N Semi-Gloss Natural S Semi-Gloss Satin SF Specify Finish (See Color Chart) CC Custom Color (Contact Factory)	PG Custom Patterned Glass Fascia* WG Waffled Glass Fascia CEG Colored Etched Glass Fascia* CWG Colored Waffled Glass Fascia* PP Perforated Metal Fascia LP Custom Fascia Template SP Solid Aluminum Fascia (Painted To Match Luminaire) CM Column Mount* * Contact Factory For Details

ORDERING EXAMPLE: VCL971 / PN2-48" / 2 / SF

SPECIFICATIONS

Housing End plates, surface mounting brackets and integral ballast housings are single piece die cast aluminum. The main housing is extruded aluminum. The standard glass fascia is .188" thick, tempered, molded, etched glass. The fixture is shipped complete with ballast and pre-wired for installation. Designed to mount over a standard 4-0 j-box by others. Additional structural backing is required (by others).

Reflector A patented two-tiered direct / indirect reflector system constructed of 95% specular, peened, anodized aluminum.

Top Lens Luminaires are provided with micro prismatic tempered glass lenses secured to an anodized aluminum doorframe. Die-cast aluminum latches with stainless steel springs hinge in either direction allowing for tool-less re-lamping and maintenance.

Electrical: Damp location CMH ballasts mounted in NEMA 1 enclosures are standard for remote mounting. Remote distance between lamp and ballast is not to exceed 30' for 210/315W.

Labels UL / CUL approved for damp locations. Fixtures are EISA compliant.

Insight Lighting reserves the right to change specifications without notice due to product improvements.

FIXTURE	MOUNTING TYPE	VOLTS	FINISH	OPTIONS

TYPE: _____

JOB NAME: _____

APPROVED: _____



INSIGHT

Rio Rancho, NM 87144
TEL: 505 345-0888
www.insightlighting.com

VCL9-PNM

11/20/13

