

LED UNDERWATER FOUNTAIN LUMINAIRES

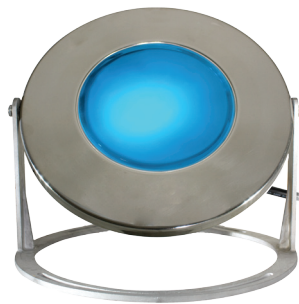


J&J Electronics, Inc. LED Underwater Fountain Luminares offer a true LED lighting alternative for fountains, ponds, and reflection pools. Brighten up your water features' appearance with the cleaner and clearer look of our PureWhite® Warm White or Cool White LED's. Or perhaps create a more custom color-rich appeal with the multiple colors and shows of our Color Splash® color changing LEDs. Our LED Underwater Fountain Luminares create the ideal setting for any underwater environment while significantly reducing energy consumption and maintenance costs, compared to traditional light sources.



ColorSplash®

- Uses a maximum of 33 watts
- Pre-programmed with seven light shows and five solid colors
- Cycle through colors/shows with on/off switch
- Multiple light synchronizing



Large, no guard shown



Small, with guard shown



Parisian Blue



New Zealand Green



Brazilian Red



Lilac White*



Miami Pink

pureWHITE®

- Uses a maximum of 58 watts
- Warm or Cool White LEDs
- Multiple lumen outputs
- Dimmable



Large, with guard shown



Small, no guard shown



Cool White



Warm White

THE J&J DIFFERENCE

Reduces energy usage by 90%

Reduces maintenance cost, no relamping

50,000 hours LED life

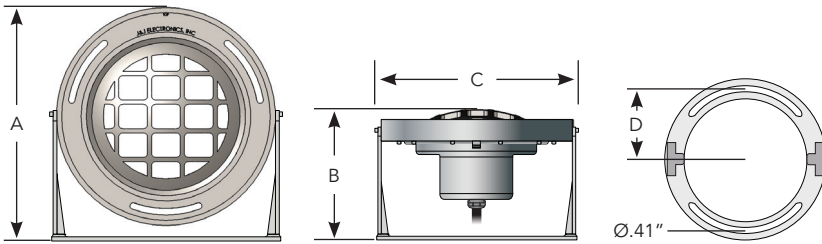
316 stainless steel construction

*Lilac White is a mixture of RGB. Not a true white.

A true LED lighting alternative for fountains.

Specifications and Ordering Information

Dimensions



Fixture Size	A	B	C	D	Lens Diameter	Base Diameter
LFF-Fxx (Large)	11.25"	6.31"	11.25"	5.125"	6.0"	11.0"
LFF-Sxx (Small)	8.56"	6.31"	6.45"	2.75"	2.9"	6.25"

Specifications

Material:	316 Stainless steel construction	Dimmable:	PureWhite ONLY, consult factory
Rating:	IP68	Lens:	Impact resistant tempered glass
Environment:	Must be submerged 2" min. - 9' max.	Gasket:	Singular piece silicone molded gasket
Voltage:	120VAC or 12VAC	Beam Spread:	120° Flood
Overheat Protection:	Integrated thermal cut-off switch	Fixture Rotation	140° (fixture rotation when bolted)
LED Life:	50,000 hour to L70*	Light Swivel:	180°
RGB Control:	On/Off switching sequences	Cable Type:	120V = 16/3 STW 105C, 600V OD: .400" 12V = 12/3 SJTW 105C, 300V OD: .421"
Faceplate:	No Guard: Stamped, polished finish With Guard: Casted, matte finish		

Color Splash

Model #	F1C	S1C
Lumens	847	207
LED Color	RGB	
Wattage	33W	7W
Cable	10', 30', 50', 100'	

PureWhite

Model #	F1L	F3L	S1L	F1W	F3W	S1W
Lumens	1,840	2,991	400	2,400	3,900	500
LED Color	Warm White/2700K			Cool White/6500K		
Wattage	39W	58W	13W	39W	58W	13W
Cable	10', 30', 50', 100'					

Ordering Information

UNDERWATER LUMINAIRES

Series	Model Number	Voltage	Guard	Base	Cable
LFF	— (xxx) —	(xx) —	(xx) —	(xx) —	(xx) —
Color Splash:	Large: F1C Small: S1C	120, 12	WG (with guard)	WB (with base)	10', 30' 50', 100'
PureWhite:	Large: F1L, F3L, F1W, F3W Small: S1L, S1W		NG (no guard)	NB (no base)	

Additional configurations available, contact your J&J representative for more information

J&J ELECTRONICS, INC.

6 Bendix, Irvine, CA 92618 • 800.735.4553 • 949.334.8700 • www.jandjelectronics.com

© 2015 J&J Electronics, Inc. All rights reserved. Color Splash and PureWhite are a trademark of and manufactured by J&J Electronics, Inc. The J&J Electronics logo is a trademark of J&J Electronics, Inc. All registered and trademarked brands and names are the property of their respective companies. Information provide is subject to change without notice. REV 120815

A true LED lighting alternative for fountains.

Go Green
Eco-Friendly

