



# Tandus | Centiva End User Instructions

7/24/2014

# Tandus | Centiva

A Tarkett Company

## Introduction

The following document details out the workflow for the Tandus | Centiva Flooring Revit project, providing simple End User instructions on how to setup and use the Tandus Material Libraries.

## Table of Contents

- Introduction ..... 1
- Browse to Tandus.com ..... 2
- Search Tandus | Centiva product catalogue for a product style ..... 2
- Download the product Zip file ..... 2
- Unzip the Tandus Material Library and Project ..... 3
- Set the Tandus Rendering Path..... 3
- Open the Tandus Material Library ..... 4
- Transfer Project Parameters ..... 4
- What Custom SPie Parameters are Transferred? ..... 5
- Material Assets (Identity, Graphics, Appearance) ..... 6
- Recommended Image and Bump files Paths ..... 6

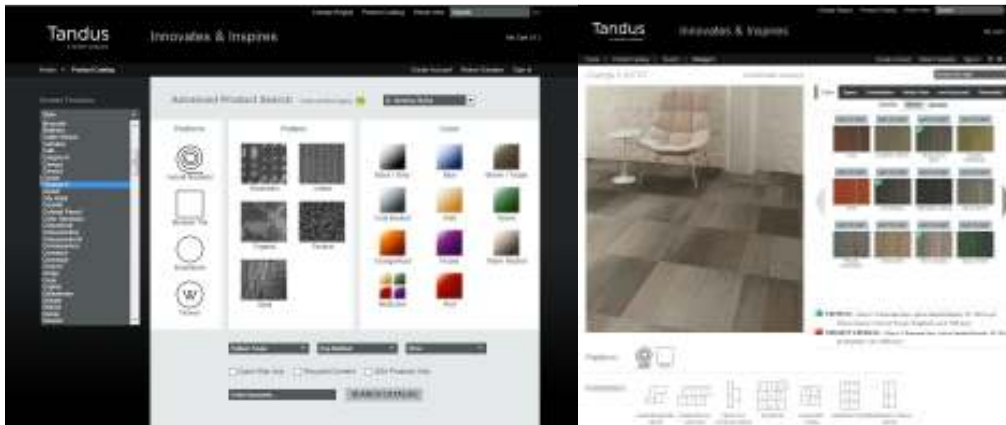


## Browse to Tandus.com

In your internet browser go to <http://www.tandus.com/>



## Search Tandus | Centiva product catalogue for a product style



## Download the product Zip file



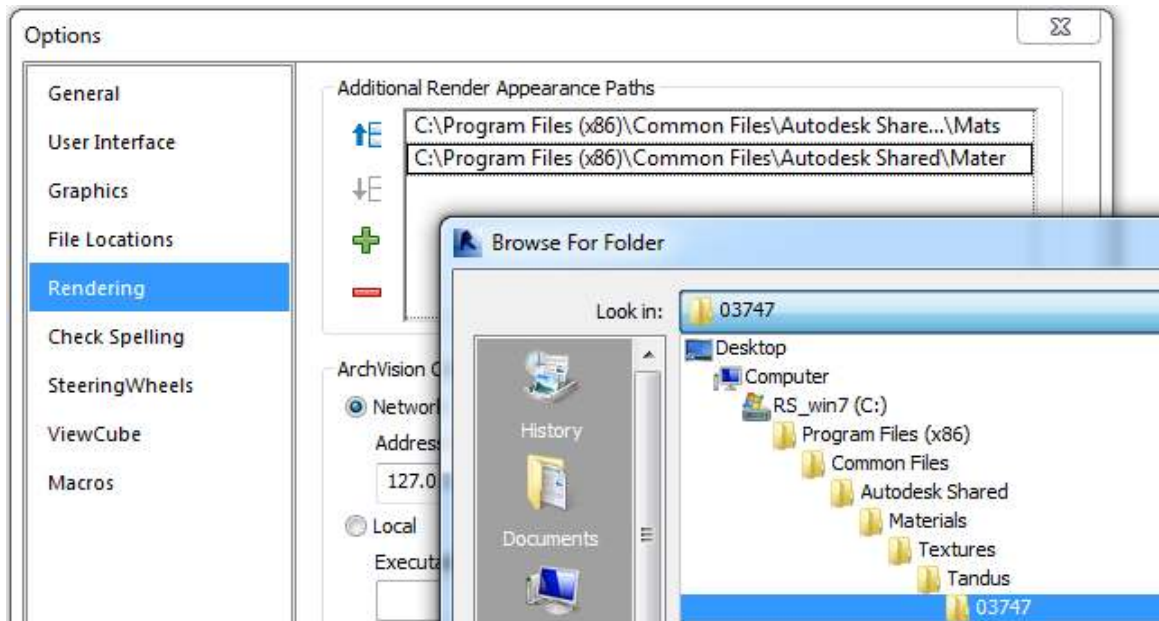
**Note:** The Tandus Zip file contains: Tandus.adsklib, Tandus material IMAGE and BUMP Folders, and a Tandus Project Template



## Unzip the Tandus Material Library and Project

(May also be set to another network location):

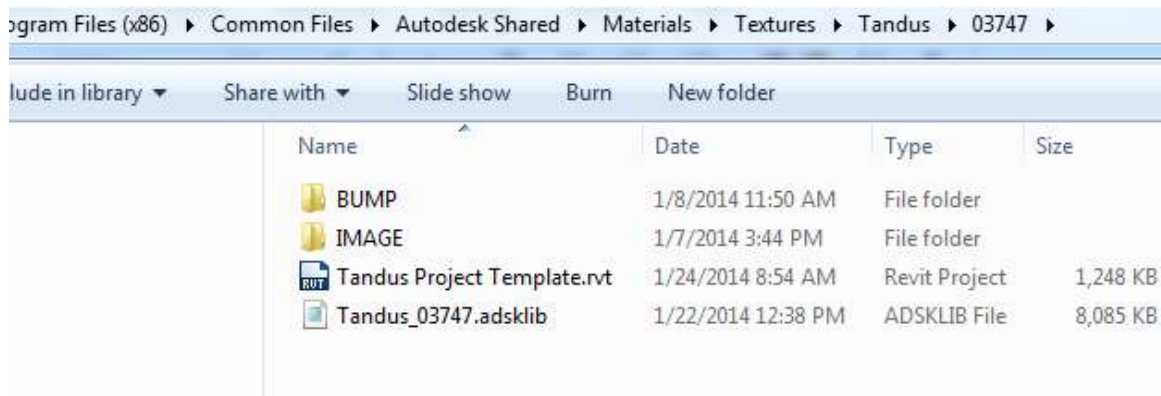
C:\Program Files (x86)\Common Files\Autodesk Shared\Materials\Textures



## Set the Tandus Rendering Path

Under Revit Options, select Rendering, select the plus sign under Additional Render Appearance Paths, copy and paste the following (the last 5 digits represent the 'Tandus Style' number):

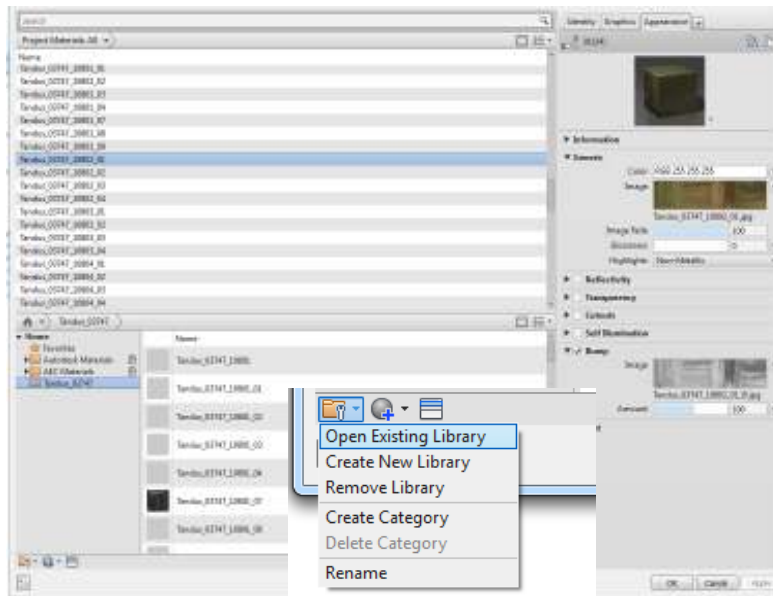
C:\Program Files (x86)\Common Files\Autodesk Shared\Materials\Textures\Tandus\03747\





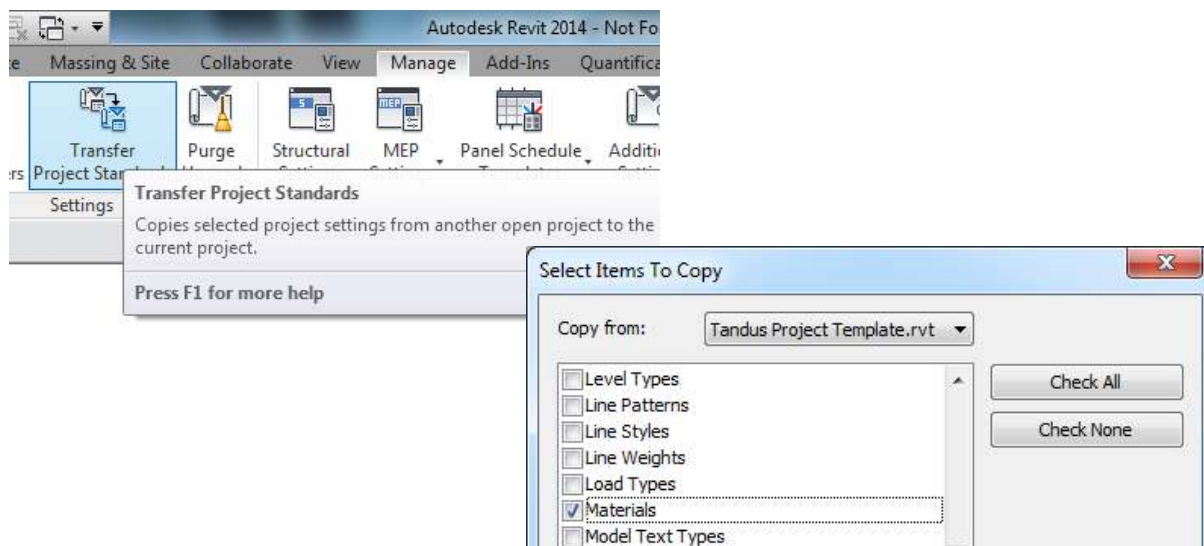
## Open the Tandus Material Library

In Revit Material browser, “**Open Existing Library**”, then browse to the location of **Tandus.adsklib**



## Transfer Project Parameters

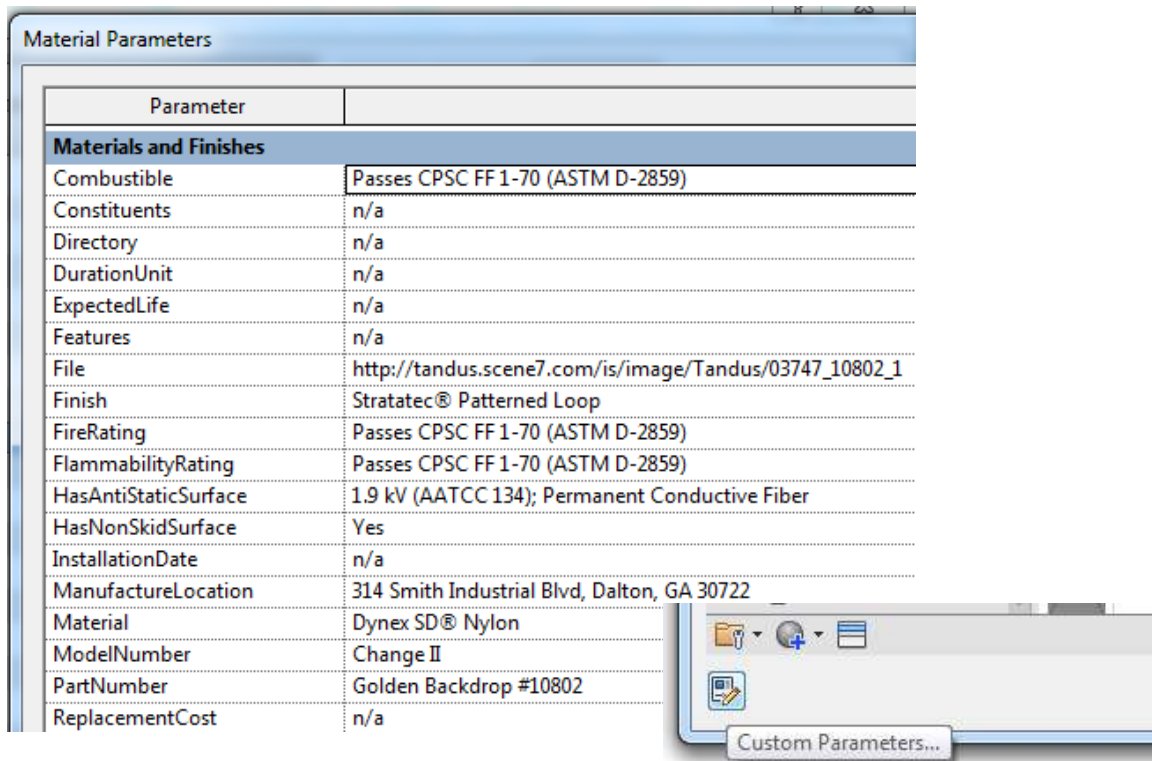
From the Manage Menu select ‘Transfer Project Standards’, check none, select ‘Materials’, select OK. As a result a new ‘Custom Parameters’ button will appear at the bottom left side of the Material Browser.





## What Custom SPie Parameters are Transferred?

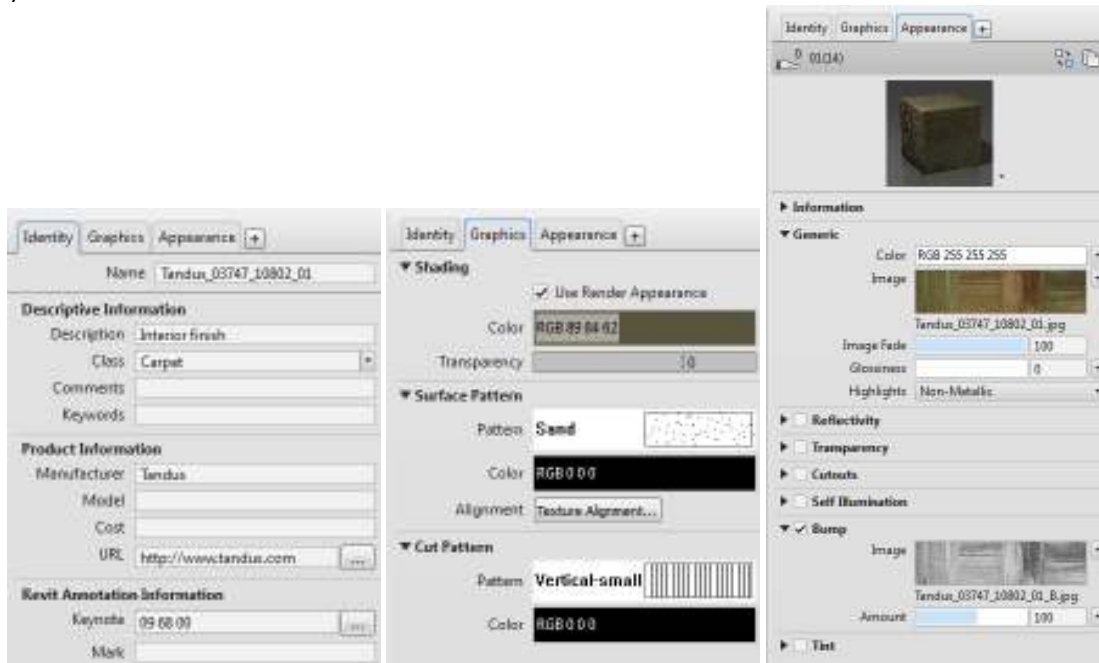
AccessibilityPerformance	FireRating	RenewableMaterial
Accessories	FlammabilityRating	ReplacementCost
AcousticRating	FragilityRating	SerialNumber
AcquisitionDate	Grade	SetNumber
Adhesives	HasAntiStaticSurface	Shape
Application	HasNonSkidSurface	Size
ApplicationNote	InstallationDate	SNAP
AssetIdentifier	InstallationMethod	Suppliers
AssetType	InstallationStandards	SurfaceSpreadOffFlame
BarCode	ManufactureLocation	Sustainability
BiobasedContent	Manufacturer	SustainabilityPerformance
BiobasedMaterial	Manufacturers	Tag
Category	Material	TagNumber
CertificationType	MaterialsBacking	TANDUS approved COBie-Spie parameters
CertifiedContent	MaterialsNote	ThermalResistance
CodePerformance	MaterialsYarn	ThermalTransmittance
Color	MethodOfMeasurement	TotalRecoveredContent
Combustible	ModelNumber	VaporPermeability
Constituents	ModelReference	WarrantyDescription
Description	NominalHeight	WarrantyDurationLabor
Description	NominalLength	WarrantyDurationParts
Directory	NominalWidth	WarrantyDurationUnit
Documentation	PartNumber	WarrantyGuarantorLabor
DocumentReference	PostConsumerRecoveredContent	WarrantyGuarantorParts
DurationUnit	Process	WarrantyStartDate
Emissions	RawMaterialLocation	Width & Length
ExpectedLife	Reference	
Features	ReferenceStandard	
File	RegionalMaterialContent	
Finish	RenewableContent	





## Material Assets (Identity, Graphics, Appearance)

The project materials assets will populate the Identity, Graphics and Appearance tabs from the (.adsklib) and associated IMAGE and BUMP folders.



## Recommended Image and Bump files Paths

Recommended Rendering Path

- C:\Program Files (x86)\Common Files\Autodesk Shared\Materials\Textures\Tandus\03747\

Recommended IMAGE folder material image assets path:

- C:\Program Files (x86)\Common Files\Autodesk Shared\Materials\Textures\Tandus\03747\IMAGE

Recommended BUMP folder material image assets path:

- C:\Program Files (x86)\Common Files\Autodesk Shared\Materials\Textures\Tandus\03747\BUMP

Name	Date	Type
Tandus_03747_10801.jpg	11/22/2011 8:37 AM	JPG File
Tandus_03747_10801_01.jpg	1/7/2014 3:45 PM	JPG File
Tandus_03747_10801_02.jpg	1/7/2014 3:45 PM	JPG File
Tandus_03747_10801_03.jpg	1/7/2014 3:45 PM	JPG File
Tandus_03747_10801_04.jpg	1/7/2014 3:45 PM	JPG File
Tandus_03747_10801_07.jpg	1/7/2014 3:45 PM	JPG File
Tandus_03747_10801_08.jpg	1/7/2014 3:45 PM	JPG File
Tandus_03747_10801_09.jpg	1/7/2014 3:45 PM	JPG File

Name	Date	Type
Tandus_03747_10801_01_B.jpg	12/17/2013 9:33 AM	JPG File
Tandus_03747_10801_02_B.jpg	12/17/2013 9:33 AM	JPG File
Tandus_03747_10801_03_B.jpg	12/17/2013 9:33 AM	JPG File
Tandus_03747_10801_04_B.jpg	12/17/2013 9:33 AM	JPG File
Tandus_03747_10802_01_B.jpg	12/17/2013 9:33 AM	JPG File
Tandus_03747_10802_02_B.jpg	12/17/2013 9:33 AM	JPG File
Tandus_03747_10802_03_B.jpg	12/17/2013 9:33 AM	JPG File
Tandus_03747_10802_04_B.jpg	12/17/2013 9:33 AM	JPG File