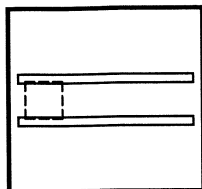


1C / 1E / 1T / 1Y - Single Circuit

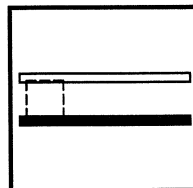


(Lamp-Side View)

All lamps in the fixture are connected to 1 circuit.

Wiring	Description	Wire Color
1 Hot	Circuit 1	Black
1 Neutral	Circuit 1	White

2C / 2E / 2T / 2Y - Dual Circuit



(Lamp-Side View)

The lamps in the fixture are divided into 2 circuits. The Lamp on CKT 1 is shown in white. Lamp on CKT 2 is shown in black.

Wiring	Description	Wire Color
2 Hots	Circuit 1	Black
	Circuit 2	Red
2 Neutrals	Circuit 1	White
	Circuit 2	Yellow

(Dual Circuit not recommended for 2 Lamp fixture - see "1D - Single Circuit Step Dimming" on Page 2.
3 Lamp fixture has CKT 1 on Inboard Lamp and CKT 2 on Outboard Lamps)

1E & 2E - Single & Dual Emergency Circuit

The fixtures are to be connected to Emergency circuit in building.

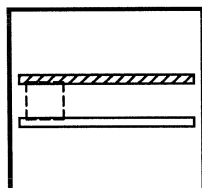
1T & 2T - Single & Dual Night Light Circuit

The fixtures are to be connected to unswitched (or timed) Night Light circuit in building.

1Y & 2Y - Single & Dual Day Light Circuit

The fixtures are to be connected to Day Light circuit in building. Day Light circuit can be switched by remote mounted Occupancy or Photo Sensor.

1B / 1F / 1G / 1H - Single Circuit w/ Battery

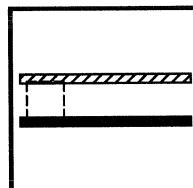


(Lamp-Side View)

All lamps in the fixture are connected to 1 circuit. The Battery Pack is connected to one lamp only, shown as shaded lamp. An additional "hot" wire is used to trickle charge and trigger the battery.

Wiring	Description	Wire Color
2 Hots	Circuit 1	Black
	Battery	Blue
1 Neutral	Circuit 1	White

2B / 2F / 2G / 2H - Dual Circuit w/ Battery



(Lamp-Side View)

The lamps in the fixture are divided into 2 circuits. The Battery Pack is connected to the CKT 1 lamp, shown as shaded. The Lamp on CKT 2 is shown in black. An additional "hot" wire is used to trickle charge and trigger the battery.

Wiring	Description	Wire Color
3 Hots	Circuit 1	Black
	Circuit 2	Red
	Battery	Blue
2 Neutrals	Circuit 1	White
	Circuit 2	Yellow

(Dual Circuit not recommended for 2 Lamp fixture - see "1A - Single CKT Step Dim. w/ Batt" on Page 2.
3 Lamp fixture has CKT 1 on Inboard Lamp and CKT 2 on Outboard Lamps)

1G & 2G - Single & Dual Emergency Circuit w/ Battery

The fixtures are to be connected to Emergency circuit in building.

1H & 2H - Single & Dual Night Light Circuit w/ Battery

The fixtures are to be connected to unswitched (or timed) Night Light circuit in building.

1F & 2F - Single & Dual Day Light Circuit w/ Battery

The fixtures are to be connected to Day Light circuit in building. Day Light circuit can be switched by remote mounted Occupancy or Photo Sensor.

GROUND

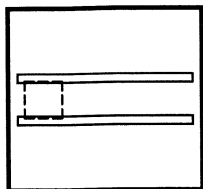
All fixtures have a green ground screw on the electrical cover plate to be connected to green conductor in whip.

WHIP

The fixture whip is supplied by others unless ordered with fixture. If ordered with fixture, the whip will be supplied and pre-attached to the fixture.

Step Dimming

1D / 1I / 1J / 1K - Single Circuit Step Dimming



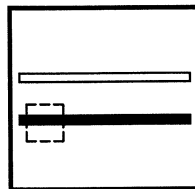
(Lamp-Side View)

All lamps in the fixture are connected to 2 switch legs. When 1 switch leg is turned off, all lamps will be "dimmed" to 50%.

Wiring	Description	Wire Color
2 Hots	Switch Leg 1	Black
	Switch Leg 2	Red
1 Neutral	Switch Leg 1	White
	Switch Leg 2	White

(Recommended configuration in place of "dual circuit")

2D / 2I / 2J / 2K - Dual Circuit Step Dimming



(Lamp-Side View)

The lamps in the fixture are connected to 4 switch legs. The Lamp shown in white is on switch legs 1 & 2. The Lamp shown in black is on switch legs 3 & 4. When 1 switch leg is turned off, that lamp is "dimmed" to 50%.

Wiring	Description	Wire Color
4 Hots	Switch Leg 1	Black
	Switch Leg 2	Red
	Switch Leg 3	Red/Black
	Switch Leg 4	Blue/White
2 Neutrals	Switch Leg 1	White
	Switch Leg 2	White
	Switch Leg 3	Yellow
	Switch Leg 4	Yellow

1J & 2J - Single & Dual Dimmed Emergency Circuit

The fixtures are to be connected to Emergency circuit in building.

1K & 2K - Single & Dual Dimmed Night Light Circuit

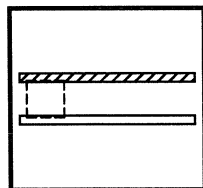
The fixtures are to be connected to unswitched (or timed) Night Light circuit in building.

1I & 2I - Single & Dual Dimmed Day Light Circuit

The fixtures are to be connected to Day Light circuit in building. Day Light circuit can be switched by remote mounted Occupancy or Photo Sensor.

(Dual Circuit Step Dimming not recommended for 2 Lamp fixture. 3 Lamp fixture has CKT 1 on Inboard Lamp and CKT 2 on Outboard Lamps)

1A / 1O / 1P / 1Q - Single CKT Step Dim. w/ Batt



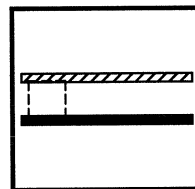
(Lamp-Side View)

All lamps in the fixture are connected to 2 switch legs. The Battery Pack is connected to one lamp only, shown as shaded lamp. An additional "hot" wire is used to trickle charge and trigger the battery. When 1 switch leg is turned off, all lamps will be "dimmed" to 50%.

Wiring	Description	Wire Color
2 Hots	Switch Leg 1	Black
	Switch Leg 2	Red
	Battery	Blue
1 Neutral	Switch Leg 1	White
	Switch Leg 2	White

(Recommended configuration in place of "dual circuit" w/ battery)

2A / 2O / 2P / 2Q - Dual CKT Step Dim. w/ Batt



(Lamp-Side View)

The lamps in the fixture are connected to 4 switch legs. The Battery Pack is connected to one lamp only, shown as shaded lamp. An additional "hot" wire is used to trickle charge and trigger the battery. The shaded Lamp is on switch legs 1 & 2. The Lamp shown in black is on switch legs 3 & 4. When one switch leg is turned off, that lamp is "dimmed" to 50%.

Wiring	Description	Wire Color
4 Hots	Switch Leg 1	Black
	Switch Leg 2	Red
	Switch Leg 3	Red/Black
	Switch Leg 4	Blue/White
	Battery	Blue
2 Neutrals	Switch Leg 1	White
	Switch Leg 2	White
	Switch Leg 3	Yellow
	Switch Leg 4	Yellow

1P & 2P - Single & Dual Dimmed Emergency Circuit w/ Battery

The fixtures are to be connected to Emergency circuit in building.

1Q & 2Q - Single & Dual Dimmed Night Light Circuit w/ Battery

The fixtures are to be connected to unswitched (or timed) Night Light circuit in building.

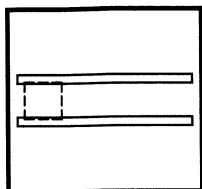
1O & 2O - Single & Dual Dimmed Day Light Circuit w/ Battery

The fixtures are to be connected to Day Light circuit in building. Day Light circuit can be switched by remote mounted Occupancy or Photo Sensor.

(Dual Circuit Step Dimming not recommended for 2 Lamp fixture. 3 Lamp fixture has CKT 1 on Inboard Lamp and CKT 2 on Outboard Lamps)

Low Voltage, Line Voltage & 2-Wire Dimming

1D / 1I / 1J / 1K - Single Circuit Dimming

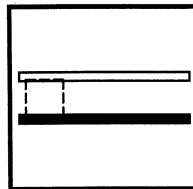


(Lamp-Side View)

All lamps in the fixture are connected to 1 circuit. When dimmed, all lamps will be controlled together.

Wiring	Description	Wire Color
1 Hot	Circuit 1	Black
1 Neutral	Circuit 1	White
* Low Voltage Controls	Circuit 1	Purple & Gray
Line Voltage Controls	Circuit 1	Orange
2 Wire	Circuit 1	None

2D / 2I / 2J / 2K - Dual Circuit Dimming



(Lamp-Side View)

The lamps in the fixture are divided into 2 circuits. The Lamp on CKT 1 is shown in white. The Lamp on CKT 2 is shown in black. When dimmed, each circuit can be controlled separately.

Wiring	Description	Wire Color
2 Hots	Circuit 1	Black
	Circuit 2	Red
2 Neutrals	Circuit 1	White
	Circuit 2	Yellow
* Low Voltage Controls	Circuit 1	Purple & Gray
	Circuit 2	Orange & Brown
Line Voltage Controls	Circuit 1	Orange
	Circuit 2	Brown
2 Wire	Circuit 1	None
	Circuit 2	None

1J & 2J - Single & Dual Dimmed Emergency Circuit

The fixtures are to be connected to Emergency circuit in building.

1K & 2K - Single & Dual Dimmed Night Light Circuit

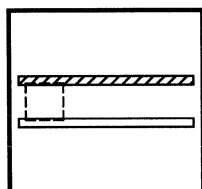
The fixtures are to be connected to unswitched (or timed) Night Light circuit in building.

1I & 2I - Single & Dual Dimmed Day Light Circuit

The fixtures are to be connected to Day Light circuit in building. Day Light circuit can be switched by remote mounted Occupancy or Photo Sensor.

(Dual Circuit Dimming not recommended for 2 Lamp fixture. 3 Lamp fixture has CKT 1 on Inboard Lamp and CKT 2 on Outboard Lamps)

1A / 1O / 1P / 1Q - Single Circuit Dim. w/ Battery

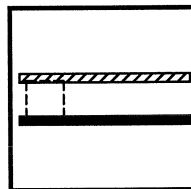


(Lamp-Side View)

All lamps in the fixture are connected to 1 circuit. The Battery Pack is connected to one lamp only, shown as shaded lamp. An additional "hot" wire is used to trickle charge and trigger the battery. When dimmed, all lamps will be controlled together.

Wiring	Description	Wire Color
2 Hots	Circuit 1	Black
	Battery	Blue
1 Neutral	Circuit 1	White
* Low Voltage Controls	Circuit 1	Purple & Gray
Line Voltage Controls	Circuit 1	Orange
2 Wire	Circuit 1	None

2A / 2O / 2P / 2Q - Dual Circuit Dim. w/ Battery



(Lamp-Side View)

The lamps in the fixture are divided into 2 circuits. The Battery Pack is connected to the CKT 1 lamp, shown as shaded. The Lamp on CKT 2 is shown in black. An additional "hot" wire is used to trickle charge and trigger the battery. When dimmed, each circuit can be controlled separately.

Wiring	Description	Wire Color
3 Hots	Circuit 1	Black
	Circuit 2	Red
	Battery	Blue
2 Neutrals	Circuit 1	White
	Circuit 2	Yellow
* Low Voltage Controls	Circuit 1	Purple & Gray
	Circuit 2	Orange & Brown
Line Voltage Controls	Circuit 1	Orange
	Circuit 2	Brown
2 Wire	Circuit 1	None
	Circuit 2	None

1P & 2P - Single & Dual Dimmed Emergency Circuit w/ Battery

The fixtures are to be connected to Emergency circuit in building.

1Q & 2Q - Single & Dual Dimmed Night Light Circuit w/ Battery

The fixtures are to be connected to unswitched (or timed) Night Light circuit in building.

1O & 2O - Single & Dual Dimmed Day Light Circuit w/ Battery

The fixtures are to be connected to Day Light circuit in building. Day Light circuit can be switched by remote mounted Occupancy or Photo Sensor.

(Dual Circuit Dimming not recommended for 2 Lamp fixture. 3 Lamp fixture has CKT 1 on Inboard Lamp and CKT 2 on Outboard Lamps)

* Low Voltage Controls are to be installed in separate whip from the Hot and Neutral. If whips are ordered with fixture, a 2nd whip will be used for the Low Voltage Controls.