

Architectural Products Group, Quick Ship Program 2015
Ametrix - Corelite - Neo-Ray



Powering Business Worldwide

Architectural Products Group, Quick Ship Program 2015

Terms & Conditions

Eaton's Architectural Product Group is now offering a quick ship program focused on their most popular and recently introduced LED luminaires that cover a wide array of architectural lighting applications. The new 5 day lead time on select products caters to fast moving construction projects and will insure that the schedules are met and the project is a success.

Terms of Quick Ship Program:

- 5 Day lead times
- 1000 linear feet maximum order for continuously mounted product (4', 8' and 12' sections only)
- 200 piece maximum order for recessed 2x2 and 2x4 luminaires, and LED Cove.

Notes:

- All products must have a "QS-" at the beginning of the catalog number.
- No submittal sign-off required
- Custom color not available
- Local 3 not available
- Standard freight terms apply
- Standard Terms and Conditions apply
- Cancellations or changes will not be accepted
- Lamps not included on fluorescent luminaires
- Fluorescent "dual circuit" is standard inboard/outboard only
- Fluorescent electronic universal voltage ballast is standard

Contents

- p3 - Ametrix LC32-LED Cove
Corelite DIVIDE-LED Suspended Luminaire
- p4 - Corelite JAYLUM-LED Suspended Luminaire
Corelite RZL-LED Suspended Luminaire
- p5 - Corelite RZL-LED Surface Mount
Corelite i2 Fluorescent Suspended Luminaire
- p6 - Corelite DIVIDE-LED Recessed Luminaire
Corelite R2X-LED Recessed Luminaire
- p7 - Corelite CLASS R3-LED Recessed Luminaire
Corelite CLASS Z3-LED Recessed Luminaire
- p8 - Neo-Ray DEFINE 2 LED Recessed Luminaire
Neo-Ray DEFINE 3 LED Recessed Luminaire
- p9 - Neo-Ray DEFINE 4 LED Recessed Luminaire
Neo-Ray DEFINE 5 LED Recessed Luminaire



AMETRIX LC32

LED Cove Luminaire
1' and 2' Continuous Mounting

Sample Number: QS-LC-1-27K-1C-UNV-12-00-J1

Product	Light Level	Color Temperature	Number of Circuits	Wiring	Voltage	Module Size	Aiming
QS-LC = Quick Ship LED Cove	1 = Light Level 1	35K = 3500K 40K = 4000K	1 = 1 Circuit	ELV = ELV Dimming	UNV = Universal (120V-277V)	12 = 12" module length 24 = 24" module length	00 = 0 degree tilt



CORELITE Divide

LED Suspended Luminaire
4', 8' and Continuous Mounting

Sample Number: QS-DSI-WS-2L35-1D-UNV-AC48-T1-16'-STD-W

Series	Optics	Light Level	Color Temperature	Number of Circuits	Wiring	Voltage
QS-DSI = Divide Suspended Series, Quick Ship	WS = Wavestream	1 = Light Level 1 2 = Light Level 2 3 = Light Level 3 4 = Light Level 4 5 = Light Level 5 reference specification sheet for lumens & wattage	L35 = LED 3500K L40 = LED 4000K	1 = 1 Circuit	C = Switched Circuit D = Dimming	UNV = Universal (120V-277V)

Suspension/ Power Feed	Suspension Length	Ceiling Type	Run Length	Driver Options	Integral Control Options	Top Cover	Finish
AC = Adjustable aircraft cable with straight power cord	Adjustable Cable: 48 = 48" 120 = 120"	T1 = 1" T-Bar T9 = 9/16" T-Bar TS = Slotted T-Bar ST = Structure JB = 4" Octagonal J-Box	4 = 4' 8 = 8' XX = Specify Row Length ¹	STD = Standard 0-10V Driver	N/A	N/A	W = White

Notes: 1. Standard row configurations over 8' are built with 4' and 8' luminaires.



CORELITE Jaylum

LED Suspended Luminaire
4', 8' and Continuous Mounting

Sample Number: QS-J2-WL-3L35-1D-UNV-AC48-T1-28'-STD-W

Series	Optics Up	Optics Down	Light Level	Color Temperature	Number of Circuits	Wiring	Voltage
QJS-J2 = Jaylum Supended, Quick Ship	W = White	L = Frosted Lens	1 = Light Level 1 2 = Light Level 2 3 = Light Level 3 reference specification sheet for lumens & wattage	L35 = LED 3500K L40 = LED 4000K	1 = 1 Circuit	C = Switched Circuit D = Dimming	UNV = Universal (120V-277V)
Suspension/ Power Feed	Suspension Length	Ceiling Type	Run Length	Driver Options	Integral Sensor (Optional)	Top Cover (Optional)	Finish
AC = Adjustable aircraft cable with straight power cord	Adjustable Cable: 48 = 48" 120 = 120"	T1 = 1" T-Bar T9 = 9/16" T-Bar TS = Slotted T-Bar ST = Structure JB = 4" Octagonal J-Box	4 = 4' 8 = 8' XX = Specify Row Length ¹	STD = Standard 0-10V Driver	N/A	N/A	W = White

Notes: 1. Standard row configurations over 8' are built with 4' and 8' luminaires.



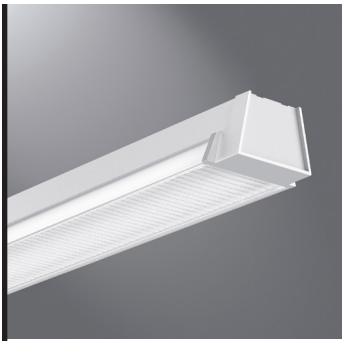
CORELITE RZL

LED Suspended Luminaire
4', 8' and Continuous Mounting

Sample Number: QS-RZL-WB-3L35-1D-UNV-AC48-T1-28'-STD-W

Series	Optics Up	Optics Down	Light Level	Color Temperature	Number of Circuits	Wiring	Voltage
QS-RZL = RZL Linear Semi-direct LED Luminaire, Quick Ship	W = With Uplight	L = Frosted Lens B = Internal Micro Baffle with Clear Linear Prismatic Lens	1 = Light Level 1 2 = Light Level 2 3 = Light Level 3 4 = Light Level 4 5 = Light Level 5 reference specification sheet for lumens & wattage	L35 = LED 3500K L40 = LED 4000K	1 = 1 Circuit	C = Switched Circuit D = Dimming	UNV = Universal (120V-277V)
Suspension/ Power Feed	Suspension Length	CeilingType	Run Length	Driver Options	Integral Sensor (Optional)	Finish	
AC = Adjustable aircraft cable with straight power cord	Adjustable Cable: 48 = 48" 120 = 120"	T1 = 1" T-Bar T9 = 9/16" T-Bar TS = Slotted T-Bar ST = Structure JB = 4" Octagonal J-Box	4 = 4' 8 = 8' 12 = 12' XX = Specify Row Length ¹	STD = Standard 0-10V Driver	N/A	W = White	

Notes: 1. Standard row configurations over 12' are built with 8' and 12' luminaires.



CORELITE RZL

LED Surface Mount Luminaire
4', 8' and Continuous Mounting

Sample Number: QS-RZL-WB-3L35-1D-UNV-SU-JB-28'-STD-W

Series	Optics Up	Optics Down	Light Level	Color Temperature	Number of Circuits	Wiring	Voltage
QS-RZL = RZL Linear Semi-direct LED Luminaire, Quick Ship	W = With Uplight	L = Frosted Lens B = Internal Micro Baffle with Clear Linear Prismatic Lens	1 = Light Level 1 2 = Light Level 2 3 = Light Level 3 4 = Light Level 4 5 = Light Level 5 reference specification sheet for lumens & wattage	L35 = LED 3500K L40 = LED 4000K	1 = 1 Circuit	C = Switched Circuit D = Dimming	UNV = Universal (120V-277V)
Suspension/ Power Feed	Suspension		Run Length	Driver Options		Integral Sensor (Optional)	Finish
AC = Adjustable aircraft cable with straight power cord	SU-JB = Surface Mount - Junction Box		4 = 4' 8 = 8' 12 = 12' XX = Specify Row Length ¹	STD = Standard 0-10V Driver		N/A	W = White

Notes: 1. Standard row configurations over 12' are built with 8' and 12' luminaires.



CORELITE i2

Fluorescent Suspended Luminaire
4', 8' and Continuous Mounting

Sample Number: QS-i2-WB-2T8-1C-UNV-AC48-T1-16'

Series	Optics Up	Optics Down	Number of Lamps	Lamp Type	Number of Circuits	Wiring	Voltage
QS-i2 = i2 Suspended, Quick Ship	S = Specular W = White	B = Parabolic Louver	1 = 1 lamp 2 = 2 Lamps 3 = 3 Lamps	N5 = T5 Normal Output T5 = T5 High Output T8 = T8 Normal Output	1 = 1 Circuit 2 = 2 Circuit	C = Standard Circuit	UNV = Universal (120V-277V)
Suspension/ Power Feed	Suspension Lenth		CeilingType	Run Length	Options		Finish
AC = Adjustable aircraft cable with straight power cord	Adjustable Cable: 48 = 48" 120 = 120"		T1 = 1" T-Bar T9 = 9/16" T-Bar TS = Slotted T-Bar ST = Structure JB = 4" Octagonal J-Box	4 = 4' 8 = 8' XX = Specify Row Length ¹	N/A		W = White

Notes: 1. Standard row configurations over 8' are built with 4' and 8' luminaires.



CORELITE Divide

LED Recessed Luminaire
2'x2', and 2'x4'

Sample Number: QS-DRI-WS-3L35-1D-UNV-22-T1-STD

Series	Optics	Light Level	Color Temperature	Number of Circuits	Wiring	Voltage
QS-DRI = Divide Recessed Series, Quick Ship	WS = Wavestream	1 = Light Level 1 2 = Light Level 2 3 = Light Level 3 4 = Light Level 4 5 = Light Level 5	L35 = LED 3500K L40 = LED 4000K	1 = 1 Circuit	D = Dimming	UNV = Universal (120V-277V)
Size	Ceiling Type	Driver Options		Integral Sensor (Optional)		Options
22 = 2'x 2' 24 = 2'x 4'	T1 = 1" Grid, Slot Grid, and 9/16" Tegular T9 = 9/16" Grid CC = Concealed Ceiling	STD = Standard 0-10V Driver		N/A		N/A



CORELITE Class R2X

LED Recessed Luminaire
2'x 2', and 2'x 4'

Sample Number: QS-R2X-WO-3L35-1D-UNV-22-T1-STD

Series	Reflector	Shielding	Light Level	Color Temperature	Number of Circuits	
QS-R2X = Class R2X LED, Quick Ship	W = White	O = Opal Lens	1 = Light Level 1 2 = Light Level 2 3 = Light Level 3 4 = Light Level 4 5 = Light Level 5 ¹	L35 = LED 3500K L40 = LED 4000K	1 = 1 Circuit	
Wiring	Voltage	Size	Celing Type	Driver Options	Integral Sensors (Optional)	Options
D = Dimming	UNV = Universal (120V-277V)	22 = 2'x 2' 24 = 2'x 4'	T1 = 1" Grid, Slot Grid, and 9/16" Tegular T9 = 9/16" Grid CC = Concealed Ceiling	STD = Standard 0-10V Driver	N/A	N/A

Notes: 1. Light Level 5 not available in 2'x2' size.



CORELITE Class R3

LED Recessed Luminaire
2'x 2', and 2'x 4'

Sample Number: QS-R3-WL-2L35-1D-UNV-22-T1-STD

Series		Reflector	Shielding	Light Level	Color Temperature	Number of Circuits	
QS-R3 = Class R3, Quick Ship		W = White	L = Linear Prismatic Lens	1 = Light Level 1 2 = Light Level 2	L35 = LED 3500K L40 = LED 4000K	1 = 1 Circuit	
Wiring	Voltage	Size	Celing Type	Driver Options	Integral Sensors (Optional)	Options	
D = Dimming	UNV = Universal (120V-277V)	22 = 2'x 2' 24 = 2'x 4'	T1 = 1" Grid, Slot Grid, and 9/16" Tegular T9 = 9/16" Grid CC = Concealed Ceiling	STD = Standard 0-10V Driver	N/A	N/A	



CORELITE Class Z3

LED Recessed Luminaire
2'x 2', and 2'x 4'

Sample Number: QS-Z3-WL-2L35-1D-UNV-22-T1-STD

Series		Reflector	Shielding	Light Level	Color Temperature	Number of Circuits	
QS-Z3 = Class Z3, Quick Ship		W = White	L = Linear Prismatic Lens	1 = Light Level 1 2 = Light Level 2	L35 = LED 3500K L40 = LED 4000K	1 = 1 Circuit	
Wiring	Voltage		Size	Celing Type	Driver Options	Integral Sensors (Optional)	Options
D = Dimming	UNV = Universal (120V-277V)		22 = 2'x 2' 24 = 2'x 4'	T1 = 1" Grid, Slot Grid, and 9/16" Tegular T9 = 9/16" Grid CC = Concealed Ceiling	STD = Standard 0-10V Driver	N/A	N/A

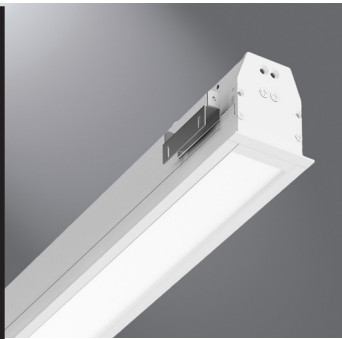


NEO-RAY Define 2

LED Recessed Luminaire
4', 8' and 12' Individually Mounted

Sample Number: QS-S122-DR-2-35-ETG-0047-1-U-DD-1-W

Series		Light Distribution	Light Level	Color Temperature	Ceiling Type	Length
QS-S122 = Define 2 Quick Ship		DR = Direct Recessed	2 = Light Level 2 (3200 Ims @ 44w)(800 Lumens per ft @ 11W)	35 = LED 3500K	ETG = 15/16" T-Grid FTG = 9/16" T-Grid GYP = Gypsum board	0047 = 4' Individual 0095 = 8' Individual 0143 = 12' Individual
Circuiting	Voltage	LED Driver	Emergency Options	Options	Shielding	Color
1 = Single Circuit	U = Universal (120V-277V)	DD = 0-10 Volt Dimming	N/A	N/A	1 = Satin Flush Diffuser	W = Matte White



NEO-RAY Define 3

LED Recessed Luminaire
4', 8' and 12' Individually Mounted

Sample Number: QS-S123-DR-2-35-ETG-0047-1-U-DD-1-W

Series		Light Distribution	Light Level	Color Temperature	Ceiling Type	Length
QS-S123 = Define 3 Quick Ship		DR = Direct Recessed	2 = Light Level 2 (3503 Lms @ 44 W) (875 Lumens per ft @ 11 W)	35 = LED 3500K	ETG = 15/16" T-Grid FTG = 9/16" T-Grid GYP = Gypsum board	0047 = 4' Individual 0095 = 8' Individual 0143 = 12' Individual
Circuiting	Voltage	LED Driver	Emergency Options	Options	Shielding	Color
1 = Single Circuit	U = Universal (120V-277V)	DD = 0-10 Volt Dimming	N/A	N/A	1 = Satin Flush Diffuser	W = Matte White



NEO-RAY Define 4

LED Recessed Luminaire
4', 8' and 12' Individually Mounted

Sample Number: QS-S124-DR-2-35-ETG-0047-1-U-DD-1-W

Series		Light Distribution		Light Level		Color Temperature		Ceiling Type		Length			
QS-S124 = Define 4 Quick Ship		DR = Direct Recessed		2 = Light Level 2 (3764 lms @ 44w)(941 Lumens per ft @ 11W)		35 = LED 3500K		ETG = 15/16" T-Grid FTG = 9/16" T-Grid GYP = Gypsum board		0047 = 4' Individual 0095 = 8' Individual 0143 = 12' Individual			
Circuiting		Voltage		LED Driver		Emergency Options		Options		Shielding		Color	
1 = Single Circuit		U = Universal (120V-277V)		DD = 0-10 Volt Dimming		N/A		N/A		1 = Satin Flush Diffuser		W = Matte White	



NEO-RAY Define 5

LED Recessed Luminaire
4', 8' and 12' Individually Mounted

Sample Number: QS-S125-DR-2-35-ETG-0047-1-U-DD-1-W

Series		Light Distribution		Light Level		Color Temperature		Ceiling Type		Length			
QS-S125 = Define 5 Quick Ship		DR = Direct Recessed		2 = Light Level 2 (3936 lms @ 44w)(984 Lumens per ft @ 11W)		35 = LED 3500K		ETG = 15/16" T-Grid FTG = 9/16" T-Grid GYP = Gypsum board		0047 = 4' Individual 0095 = 8' Individual 0143 = 12' Individual			
Circuiting		Voltage		LED Driver		Emergency Options		Options		Shielding		Color	
1 = Single Circuit		U = Universal (120V-277V)		DD = 0-10 Volt Dimming		N/A		N/A		1 = Satin Flush Diffuser		W = Matte White	

Eaton

1121 Highway 74 South
Peachtree City, GA 30269
P: 770-486-4800
www.eaton.com/lighting

Canada Sales
5925 McLaughlin Road
Mississauga, Ontario L5R 1B8
P: 905-501-3000
F: 905-501-3172

Our Lighting Product Lines

Halo
Halo Commercial
Portfolio
IRiS
RSA
Metalux
Corelite
Neo-Ray
Fail-Safe
MWS
Ametrix
Shaper
io
Lumark
McGraw-Edison
Invue
Lumière
Streetworks
AtLite
Sure-Lites

Our Controls Product Lines

Greengate
iLumin
Zero 88
Fifth Light Technology
iLight (International Only)



Powering Business Worldwide

Eaton
18001 East Colfax Avenue
Denver, CO 80011
P: 303-393-1522
www.eaton.com/lighting

© 2015 Eaton
All Rights Reserved
Printed in USA
Publication No. BR525021EN
July 2015

Eaton is a registered trademark.

All other trademarks are property
of their respective owners.