

DAVID EDWARD

LIBRARY COLLECTION

vision. values. environment.





LIBRARY COLLECTION :: INDEX

- | | |
|------------------------------|---|
| 2 About | 14 Robert A.M. Stern Series |
| 4 Wire Management | 16 Universal Series |
| 6 Sustainability | 20 Standard David Edward Products;
Lounges, Pull-ups and Tables |
| 8 Collection Overview | 28 Installations |
| 10 Fayette Series | |

ABOUT

The Library Collection by David Edward is designed by leading industrial designers who create design that highlights the natural beauty and strength of solid wood. The result of thousand of installations and extensive research and testing of the unique requirements of learning facilities has combined to form David Edward's library capabilities.

CAPABILITIES:

- Customizing of standard product and total custom production capability
- In-house product development
- Product designers and experienced CAD operators
- Plant product engineering, seat engineers and on site testing
- 3-D modeling software
- 15,000 square feet of prototyping space
- Skilled cabinet / pattern makers
- Product performance testing to BIFMA standards



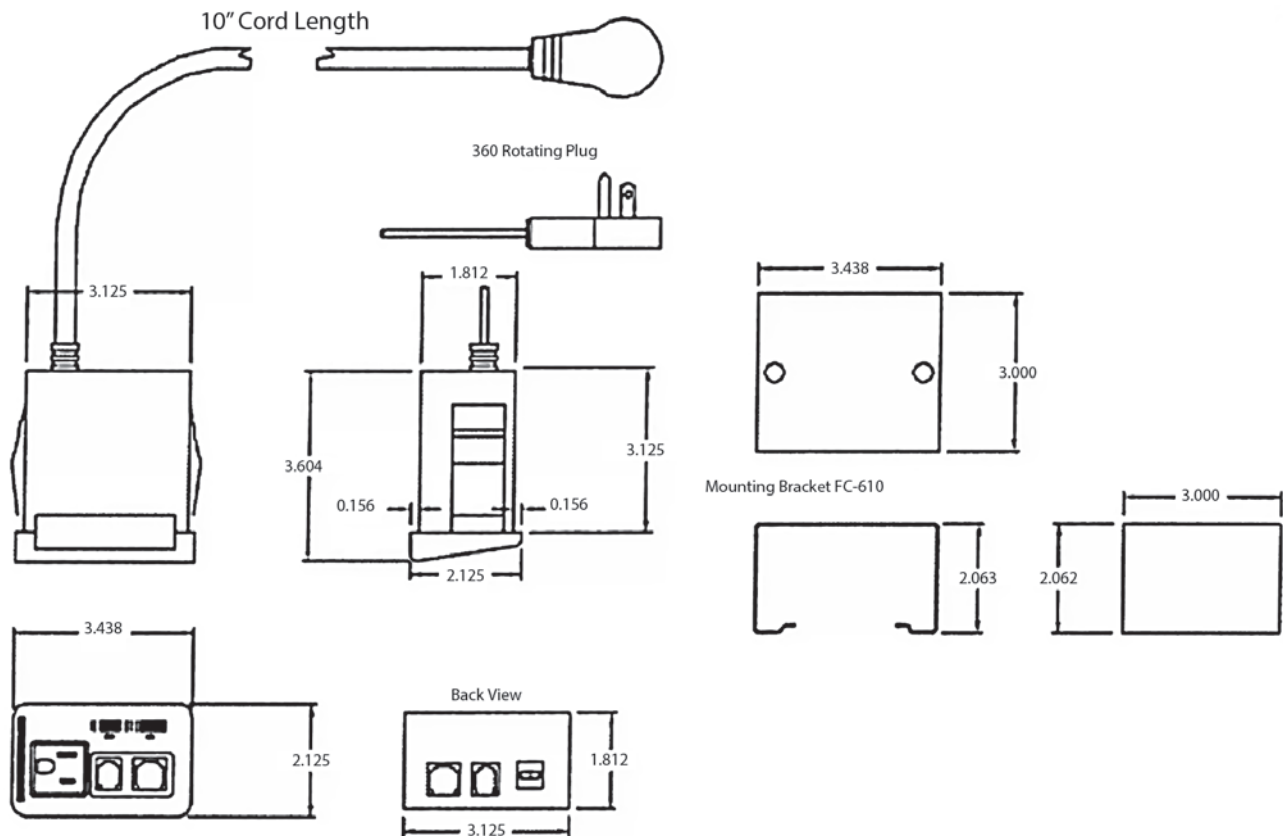
WIRE MANAGEMENT

DExbox

Designed especially for convenience when using your laptop computer, the DExbox is a state-of-the-art user-friendly electrical cordset and surge protector. The DExbox is perfect for use in desks or workstations where you need fast and easy access to connect your laptop computer to both power and data/phone connections.

Using the DExbox allows you to conserve the battery of your laptop. The unit mounts in a 3-3/4" x 1-7/8" cutout or with an optional mounting bracket. Installation is simple: the unit is held in place by side spring clips. The unique front finger grip (pull out) allows for easy removal and access.

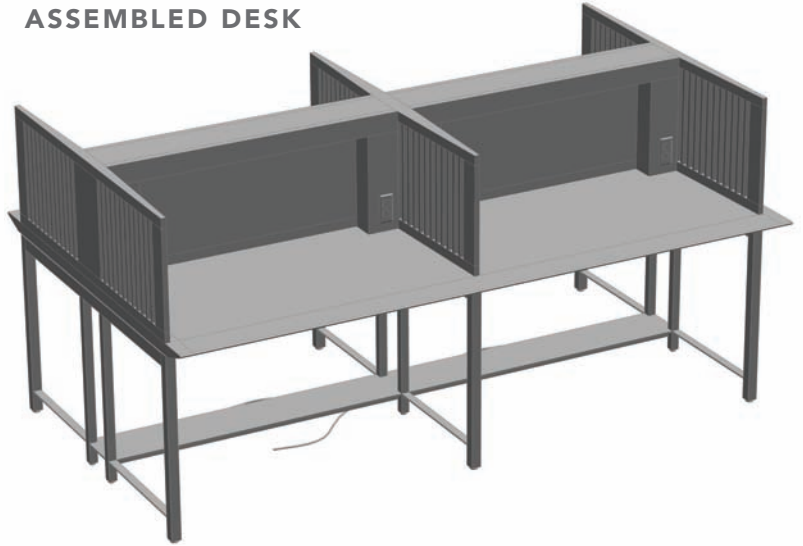
The DExbox has a dark charcoal, textured, non-glare finish and features one electrical receptacle, one RJ11 telephone jack, one RJ45 data jack, 416 joules of surge protection, ground indicator light, surge indicator light, and a 10 foot 16-3 power cord with a 1/2 inch low profile 360 degree rotating wall hugging plug. The unit is rated at 13 AMPs and is UL and cUL listed.



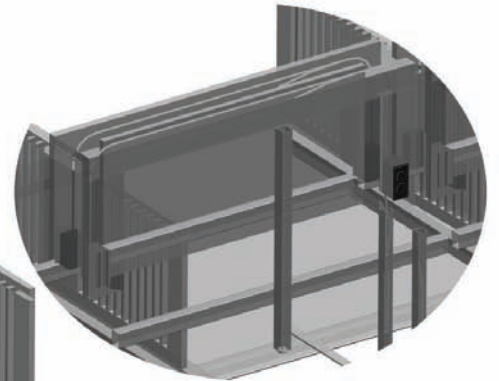
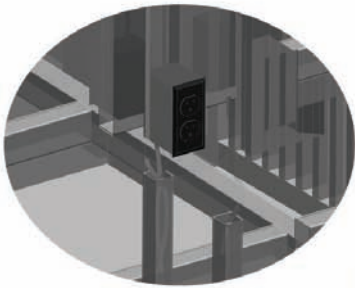
POWER & DATA



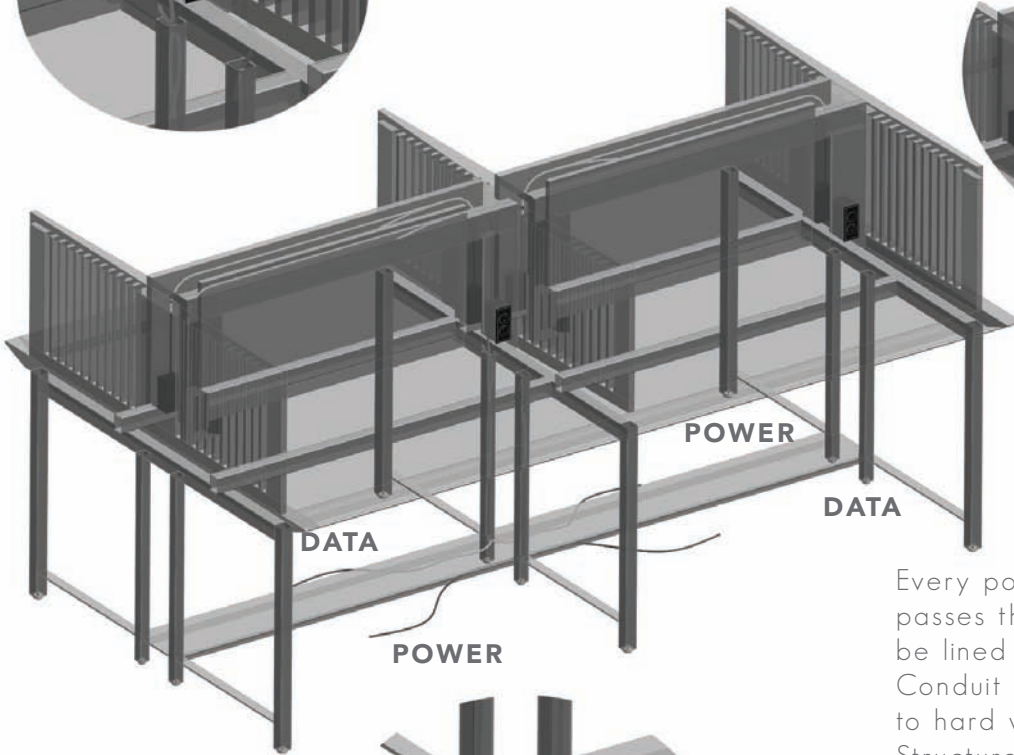
ASSEMBLED DESK



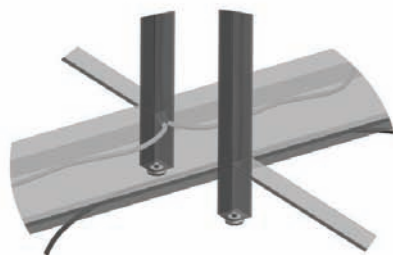
Power and Data are brought through inside of cross rail and up through table top to junction boxes



Open space within the light canopy provides raceway for power and data.



Every point in which the wire passes through a steel wall to be lined with protective sleeves. Conduit hardware can be used to hard wire unit to power grid. Structural tubing becomes conduit.



Power and Data feeds through the leg from behind the stretcher assembly.

SUSTAINABILITY

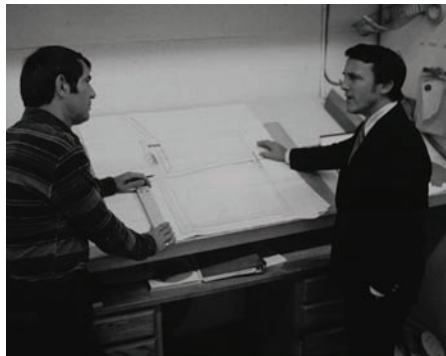


David Edward and the Pitts family's philosophy is to manifest positive, unconditional regard for its customers, its employees, its suppliers, the environment and the community at large.

David Edward has a long standing legacy of environmental stewardship. For fifty years, our family's company has practiced conservation and sustainability while producing environmentally friendly furniture.



Decades before the green wave, our tradition of minimizing waste and employing natural materials was established with the concern for our employees and our impact on the environment. We have dedicated years to researching and testing materials, as well as exploring cutting edge manufacturing systems, resulting in our ability to produce low VOC, sustainable furniture that also meets David Edward's high standards for quality and design. Additionally, David Edward is uniquely capable of supporting our clients' environmental mission, through both our extensive custom capabilities and our vertically integrated production process.



Our in-house Industrial Design Studio, Studio David Edward, is capable of reconciling the conflicting demands for maximum value, with innovative aesthetics, functionality and sustainability. Custom designs can provide an exclusive look and harmonious integration with the environment. Whether a revision to an existing piece, or a totally new product designed to fit a customer's project specific requirements, this unique capability that we are able to provide our clients enables us to be innovators in the use of non-toxic, renewable, recyclable and natural materials with clean processes.

We produce everything in our own facilities in the United States and it is this vertical integration that supports our confidence in our ability to certify the materials and manufacturing systems used to create each and every product design. To aid our customers, David Edward maintains complete and documented supervision of environmental specifications, as all of our products are fully produced with little or no reliance on third party vendors.



David Pitts

Gregory Pitts

Kevin Pitts



LIBRARY COLLECTIONS

Our library collections include single, back-to-back, side-to-side and quad carrels. Also included are a range of seating and table options, with various end panels and unlimited custom capabilities.

Fayette
Reading Table



Robert A.M. Stern
Atheneum Reading Table



Robert A.M. Stern
Bibliotheque Reading Table



Universal
Single Carrel



Shown on previous page: Santa Maria Library



FAYETTE SERIES

STUDY CARRELS

Our Fayette series comes with or without shelf, in single, back-to-back, side-to-side and quad versions. Wood base frame with steel supports of a cantilevered work surface. Solid wood edge with optional work surfaces available.

Single Carrel

1 work station



Side-by-Side Carrel

2 work stations



Quad Back-to-Back

4 work stations



Shown on previous page: Thurgood Marshall Law Library



FAYETTE SERIES

READING TABLES

David Edward's Fayette table features a wood base frame with steel supports of a cantilevered work surface. Solid wood edge with optional work surfaces of laminate, veneer, MDF, Marmoleum, or Corian surface.

Reading Table

4 Person - Round

Reading Table

4 person



Reading Table

6 person



Shown on previous page: Santa Maria Library

ROBERT A.M. STERN SERIES

ATHENEUM COLLECTION

Our Atheneum series includes a range of reading tables, carrels, chairs and end panels. Optional work surfaces of laminate, veneer, MDF, Marmoleum or Corian surface.

Back to Back Carrel



Arm Chair



Reading Table



Armless Chair



BIBLIOTHEQUE COLLECTION

The Bibliotheque series includes reading tables, study carrels, chairs and end panels. Chairs feature mortise-tenon construction with sled bent arms. Reading table has two scrolls per end base and integral sled base at floor.

Back to Back Carrel



Armless Chair



Reading Table





UNIVERSAL SERIES

READING TABLES - STYLES A & B

The Universal series is available in two styles. Both utilize a wood base frame with 1/2" nickel plated steel spacers supporting work surface. Solid wood edge with optional work surfaces of laminate, veneer, MDF, Marmoleum, or Corian surface are available.

Style A



Style B





UNIVERSAL SERIES

STUDY CARRELS

Universal carrels include a wood base frame with 1/2" nickel plated steel spacers supporting work surface. Nickel plated top cap. Solid wood edge with optional work surfaces of laminate, veneer, MDF, Marmoleum or Corian surface are available.

Single Carrel



Side-by-side Carrel



Shown on previous page: The George School



LOUNGE SEATING

For further design options, check out David Edward's full product line featuring lounges, pull-ups, benches and tables.

Aspen



Aussie



Elise



Fly



Shown on previous page: LaGrange College

LOUNGE SEATING

For further design options, check out David Edward's full product line featuring lounges, pull-ups, benches and tables.

Gower



Grand Island



Lolita



Serengeti



LSM



Soho





PULL-UP SEATING

For further design options, check out David Edward's full product line featuring lounges, pull-ups, benches and tables.

Aussie



Consulate



Edward



Reinhard



Shown on previous page: The George School



TABLES

For further design options, check out David Edward's full product line featuring lounges, pull-ups, benches and tables.

Aussie



Fly



Gotham



Shown on previous page: Santa Maria Library

INSTALLATIONS





Shown Clockwise from Left:

Santa Maria Library utilizing Fayette Collection with ADA compliance.

Clearwater Public Library, showcasing children's area with the Child Fly Series.

Palm Beach Atlantic Library custom carrels designed with mixed materials.

The George School Library common area fully complies with LEED Certification, and earns LEED Credit.

INSTALLATIONS





Shown Clockwise from Left:
Virginia Tech, featuring the Fly lounge series in a common sitting area.
Medina Public Library in Ohio.
The Fayette table shown, features a custom light fixture and power option.
Palm Beach Atlantic Library showcasing LSM pull-up and Universal custom pieces.

INSTALLATIONS



Entire Spread:
Anne Arundel Community College. Located in Baltimore, MD, the library at Anne Arundel utilizes a variety of David Edward product. Shown product includes an LSM lounge, Aussie pull-up, Fly table and much more.



