

# Fabrics and Finishes. Collections Of Pompeii



**3Y** Zen Herbal  
Grade C  
V-1.5" H-1.4"



**3V** Litchfield Willow  
Grade C



**10Z** Louise of Bark  
Grade C  
V-6.8" H-1.3" RR



**11D** Astor Court of Bark  
Grade C  
V-6.8" H-8.7" RR



**10Y** Manomet Moss  
Grade B  
RR



**10G** Scoop Birch  
Grade A



**9H** Dupione Laurel  
Grade A



**10A** Boucle Lanes Seamist  
Grade D  
V-4.25" RR



**7C** Largo Sand  
Grade B  
V-12.8" H-14"



**2D** Sherbrook Brass  
Grade A



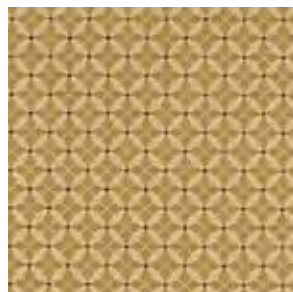
**11M** Lauren Stripe Crimson  
Grade C  
V-6.75" H-6.75" RR



**11H** Simone Chili  
Grade B  
V-2.27" H-.38"



**11N** Seagrass Check Crimson  
Grade C  
V-4.5" H-4.5"



**2A** Richmond Wheat  
Grade B  
V-1.4" H-1.4"

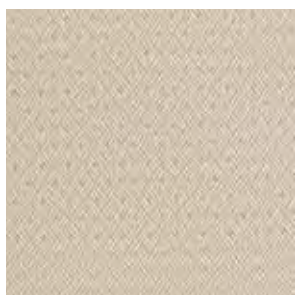


**2I** Canvas Henna  
Grade A



**11E** Monarch Chili  
Grade B  
V-14" H-27.5" RR

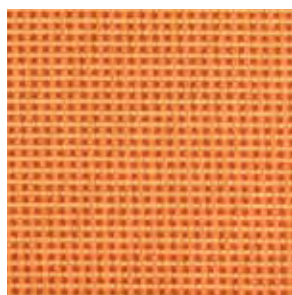
Colors are shown as accurately as possible. Actual color may vary slightly from color chart shown. Fabrics and Finishes shown on pages 16 and 17 are available for Collections of Pompeii ONLY.



**11K** Whitney Diamond Tuscan  
Grade C  
V-2.5" H-.75"



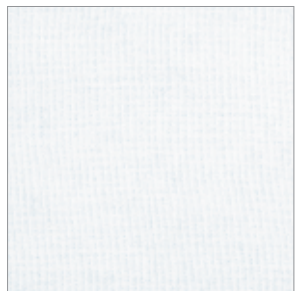
**11J** Fife Cayenne  
Grade B



**9R** Harmony Dot Tuscan  
Grade C  
V-.25" H-.25"



**8P** Canvas Buttercup  
Grade A



**8D** Canvas Natural  
Grade A



**3Q** Othello Dune  
Grade B  
V-2.5" H-.2" RR



**10P** Lauren Stripe Gold  
Grade C  
V-6.75" H-6.75" RR



**10W** Lamonte Lattice Silver  
Grade D  
V-14" H-13.5"



**10V** Buttercup Jewel  
Grade C  
V-1.25"



**10U** Edgewater Papyrus  
Grade B  
H-2"



**9T** Harmony Dot Black  
Grade C  
V-.25" H-.25"

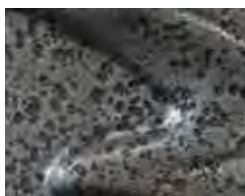


**10K** Georgeanne Onyx  
Grade C  
V-14.5" H-13.69" RR

## Finishes



**A1** Natural  
Standard



**N4** Antigua  
Standard



**N7** Patina  
Standard



**N8** Latigo  
Standard



**O1** Midnight  
Standard



**P8** Brownstone  
Premium



**O4** Century  
Premium



**P2** Cobre  
Premium



**B2** Rich Earth  
Premium



**A9** Veridian  
Premium



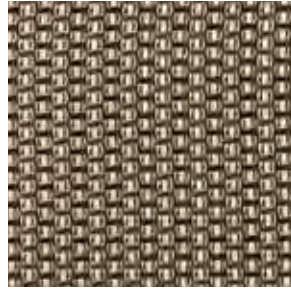
# Cushion, Sling & Umbrella Woven Vinyl Fabrics



213 Caramel Wicker



214 Moss Wicker



217 Madera Nickel



226 Fieldchester



227 Turquoise Stone



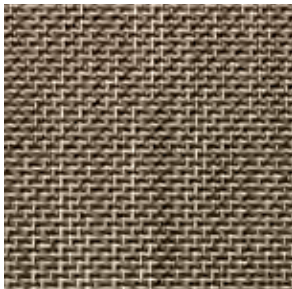
231 China Brush Maize



269 Cane Wicker Bronze



277 Earth Multi



280 Trellis Stone



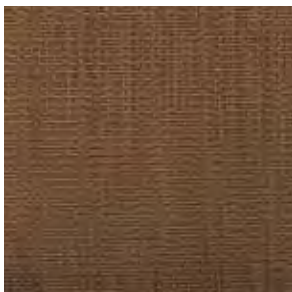
281 Trellis Moss



307 Midnight Blue



359 Bahia Toast



360 Transition Java



408 White on White  
Packed Stripe  
Fabric has a 2½" repeat



412 Especia

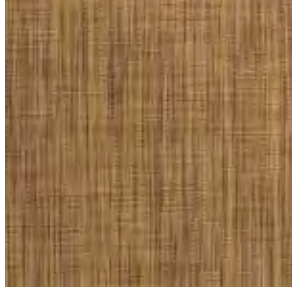


413 Coconut

Colors are shown as accurately as possible.

Actual color may vary slightly from color chart shown. Fabric descriptions and product care instructions on back inside cover of catalog. Fabrics and Finishes shown on pages 91-95 are not available for the Collections of Pompeii.

# Cushion, Sling & Umbrella Woven Vinyl Fabrics



416 Negril Tweed



424 Earthtone Grasscloth



441 Loom Weave Camel



457 Earthtone Basketweave



468 Santa Fe Pottery



471 Daybreak



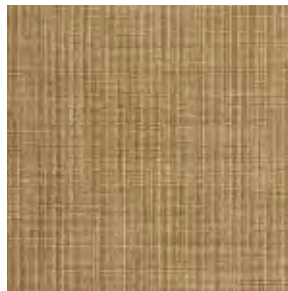
476 Aluminum



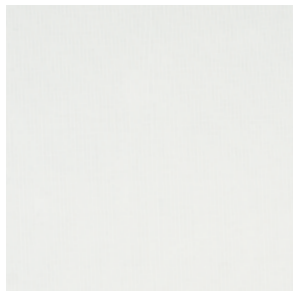
477 Hartford



811 Keaton Hazelnut



812 Keaton Bamboo



866 White Mesh



893 Bronze

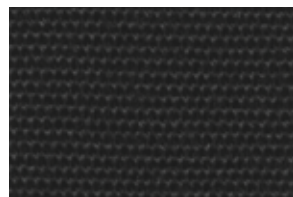
## Cushion & umbrella woven acrylics

Colors are shown as accurately as possible. Actual color may vary slightly from color chart shown. Fabric descriptions and product care instructions on back inside cover of catalog.

Fabrics and Finishes shown on pages 91-95 are not available for the Collections of Pompeii.



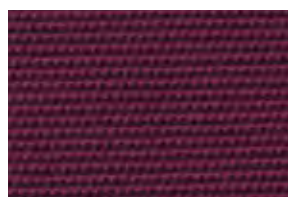
5404 Natural White



5408 Black



5422 Antique Beige



5436 Burgundy



5439 Navy

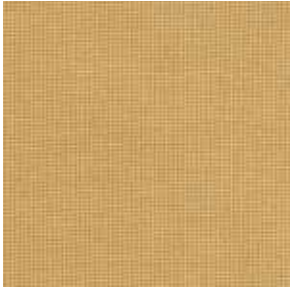


5446 Forest Green



# Premium Cushion and Umbrella Fabrics

Grade A



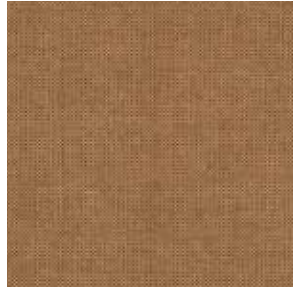
771 Fife Cornsilk

Grade D



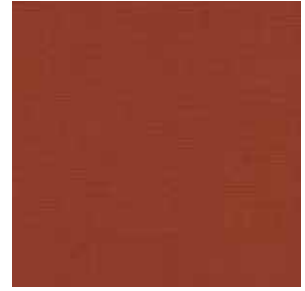
534 Sun Strie

Grade A



776 Fife Teak

Grade A



495 Sparkle Terra

Grade B



355 Dash Redwood

Grade B



356 Dupione Henna

Grade A



343 Derby Chilli

Grade D



537 Tuscan Paisley

Grade B



347 Shoji Parchment

Grade C



334 Savanna Hemp

Grade D



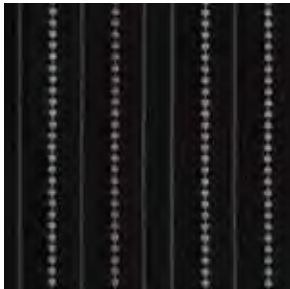
787 Plain Check

Grade D



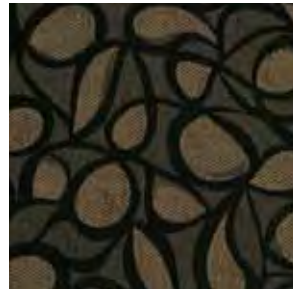
778 Poseidon Dune

Grade B



505 Passport Mica

Grade C



506 Tempo Charcoal

Grade A



8318 Linen Sesame

Grade D



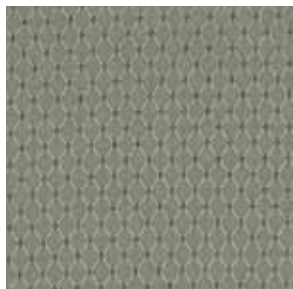
845 Pasha Platinum

Colors are shown as accurately as possible.

Actual color may vary slightly from color chart shown. Fabric descriptions and product care instructions on back inside cover of catalog. Fabrics and Finishes shown on pages 91-95 are not available for the Collections of Pompeii.

# Premium Cushion and Umbrella Fabrics

Grade C



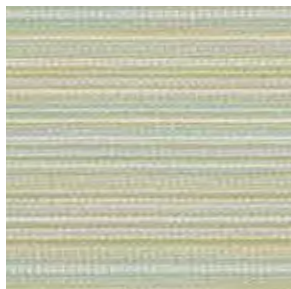
846 Trellis Aspen

Grade A



501 Sparkle Pool

Grade A



500 Jinga Sea Mist

Grade A



502 Skyline Sea Mist

Grade A



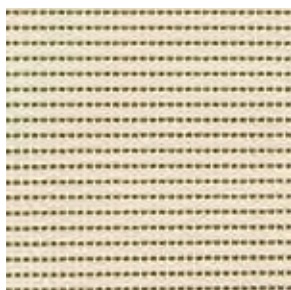
576 Sparkle Pesto

Grade D



790 Antique Fret

Grade D



788 Boardwalk

Grade C



628 Eterna Desert

Grade A



5425 Canvas Cocoa

## Fabric Descriptions

### Woven Vinyl Fabrics

Woven Vinyl fabrics are made from Weather Weave, an open weave, vinyl-coated, polyester fiber fabric. Weather Weave is similar to the material used in tire cord, bonded so it will not unravel if cut. Especially designed for outdoor use, Weather Weave dries quickly and can be left out in any kind of weather. Ultraviolet stabilizers have been added to inhibit fading, deterioration and mildew. Weather Weave fabric cushions will provide many years of outdoor pleasure.

Mix three gallons of warm water with one cup of household bleach and one cup mild laundry detergent. Apply with soft brush or cloth and rinse well. DO NOT USE SOLVENT-TYPE MATERIALS, THEY WILL DAMAGE THE YARNS.

## Cleaning Instructions

### Woven Acrylic Fabric

Acrylic Fabric is 100% solution dyed and provides a soft hand, having the look and feel of cotton. Acrylic fabrics are recommended for both indoor and outdoor use. Acrylics are the most durable outdoor fabrics because of their UV fastness and their ease of cleanup.

Wash with a solution of soap or mild detergent and warm water. Sponge thoroughly with water and allow to air dry. For more stubborn stains, mix three gallons of warm water with one cup of household bleach and one cup of mild laundry detergent.

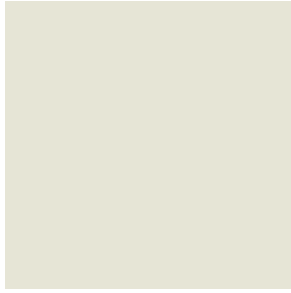
See sales rep for additional fabric selections. Colors are shown as accurately as possible.

Actual color may vary slightly from color chart shown. Fabric descriptions and product care instructions on back inside cover of catalog.

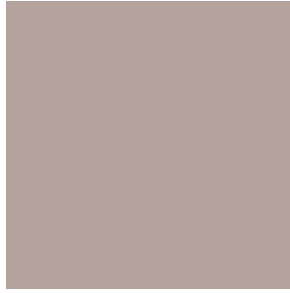
Fabrics and Finishes shown on pages 91-95 are not available for the Collections of Pompeii.

# Frame Finishes.

## Standard Finishes (Only available on Casual Basics Furniture)



**IVO** Ivory



**SST** Sandstone

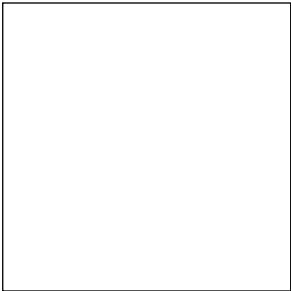


**SVR** Smooth Verde



**CAM** Camel

## Select Finishes



**SWH** Smooth White



**BIS** Antique Bisque



**TSV** Textured Silver



**NKL** Hammered Nickel



**OLY** Olympic Gold



**JAV** Java



**BRZ** Bronze



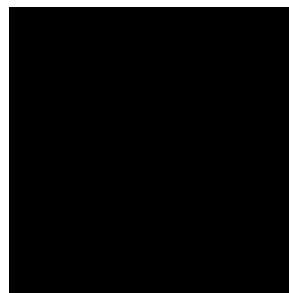
**MHG** Mahogany



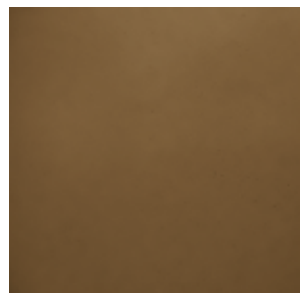
**TPW** Textured Pewter



**TVR** Textured Verde



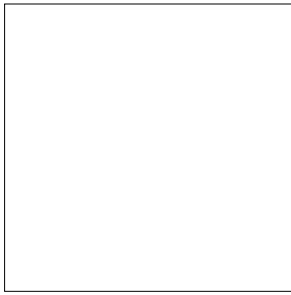
**SBL** Smooth Black



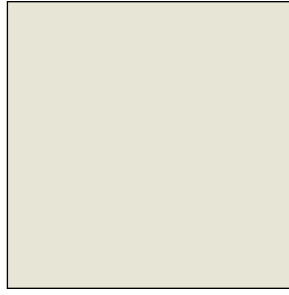
**AMB** Amber Spice

Actual color may vary slightly from color chart shown. Finishes shown on page 95 are not available for the Collections of Pompeii.

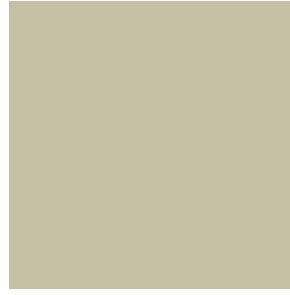
# Fiberglass Finishes



**G55** White



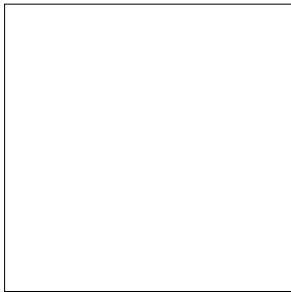
**G56** Ivory



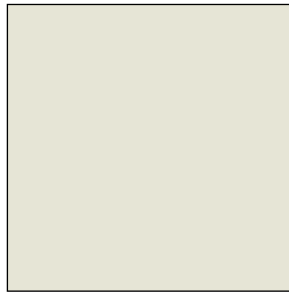
**G54** Beige

Colors for fiberglass products. Gel coat with ultra-violet stabilizers backed by reinforced chopped fiberglass. Colors are shown as accurately as possible. Actual color may vary slightly from color chart shown.

# Vinyl Colors



**5113** White



**5114** Ivory



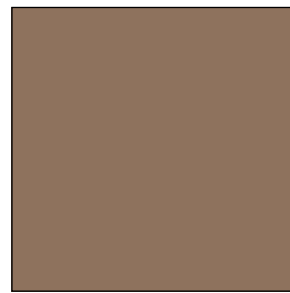
**35** Textured Antique Bisque



**5102** Beige



**26** Textured Olympian



**40** Textured Camel



**34** Textured Sandstone

Colors are shown as accurately as possible. Actual color may vary slightly from color chart shown. Custom logo available for smooth vinyl straps only. Contact your sales representative for more information.



# Vinyl Colors.



37 Textured Java



22 Mahogany



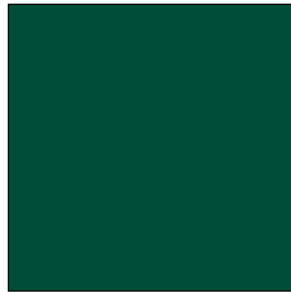
5101 Burgundy



5120 Sage



27 Textured Antique Moss



5157 Smooth Verde



70 French Blue



5107 Royal



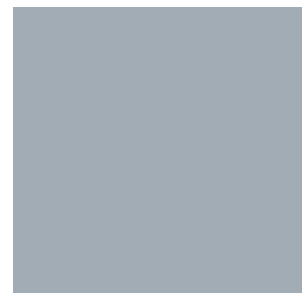
5106 Navy



5158 Red



89 Yellow



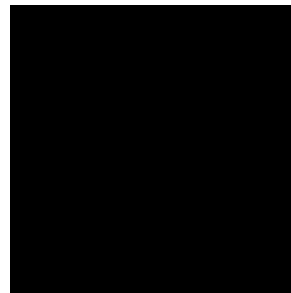
5151 Smooth Silver



96 Textured Pewter



23 Bronze



5121 Black



Vinyl strapping available in 250' rolls or in straps pre-cut for easy installation. The vinyl straps are 100% u.v. stabilized virgin vinyl, .110" thick by 2" wide.

Colors are shown as accurately as possible. Actual color may vary slightly from color chart shown.

Custom logo available for vinyl strapping. Contact your sales representative for more information.