

## Specifications

Ruins

399559

**maharam**

### Application

Walls

### Characteristics

Content: 48% Cellulose, 35% Latex, 17% Nylon

Finish: Washable

Backing: None

Reference Dimension: 10' x 16' 8" (305cm x 508cm)

Maintenance: W-Clean with water-based cleanser.

Customs: Repeatable, Scalable

Country of Origin: USA

Note on Mold: Intended for use in buildings designed and maintained to avoid moisture on or within walls.

Application must conform to current Installation Guidelines included in each shipment or available at [maharam.com](http://maharam.com).

### Price

Installation is sized, priced and produced on a project-specific basis

### Performance

Flammability: This textile meets all appropriate flammability requirements for walls. See flame certificate for specific testing information.

Lightfastness: 40+ Hours



### Environmental

Contributes to LEED 2009 Mr Credit 6, Rapidly Renewable Materials

### Brief

Ruins is based on the German city of Dresden, known as the "Jewel Box" for its baroque and rococo city center before being leveled in a controversial Allied bombing in the final months of World War II. With its diagonal grid, clean lines, and restrained graphic approach, Ruins offers a somber isometric view of Dresden's destruction.

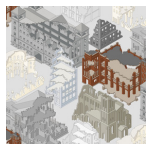
### Warranty

3 years. See Terms and Conditions for more information.

© 2012 Studio Job, Maharam under license

Complete product information at [maharam.com](http://maharam.com)

800.645.3943



001