

# Surface Materials

## Wood

### Maple



Natural Maple (WNM)

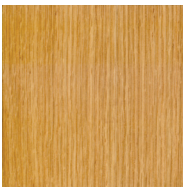


Honey Maple (WHM)



Ebony Maple (WEM)

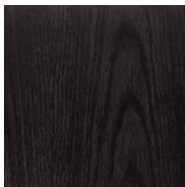
### Oak



Natural Oak (WNO)

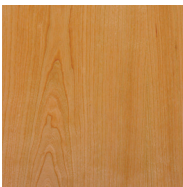


Medium Oak (WMO)



Ebony Oak (WEO)

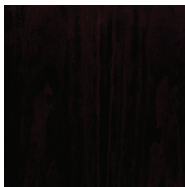
### Cherry



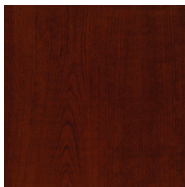
Natural Cherry (WNC)



Medium Cherry (WMC)

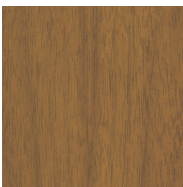


Ebony Cherry (WEC)

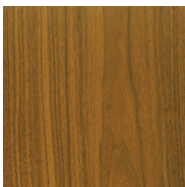


Mahogany Over  
Cherry (WMA)

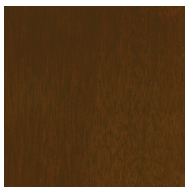
### Walnut



Natural Walnut (WNW)



Medium Walnut (WMW)

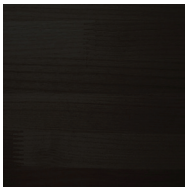


Dark Walnut (WDW)

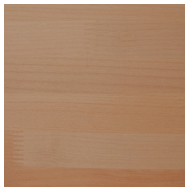
### Maple Butcher Block



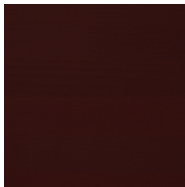
Natural Maple (BNM)



Ebony Maple (BEM)



Natural Cherry Over  
Maple (BNC)



Mahogany Over  
Maple (BMA)

# WCI

Due to limitations of the color printing process and natural wood variations, these finish samples should be considered representative only.

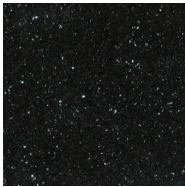
# Surface Materials

## Acrylic (Indoor & Outdoor)

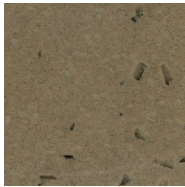
### Opaque



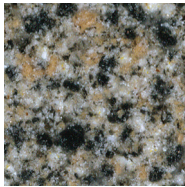
White Quartz (AWQ)



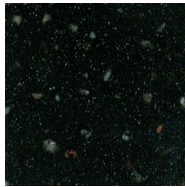
Black Quarry (ABQ)



Moon Dust (AMD)



Khaki (AKH)



Gravel (AGV)

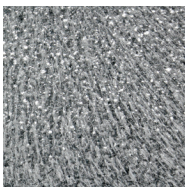


Gold Dust (ADG)

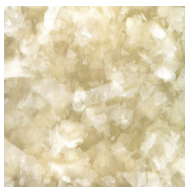
### Translucent



Glacier (AGL)



Terrain (ATR)



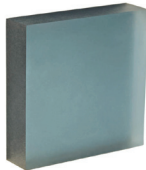
Golden Ray (AGY)

## 3form® (Indoor & Outdoor)

### Chroma®



Aloe (FAE)



Atlantic (FAC)



Camel (FCA)



Eggplant (FEG)



Ghost (FGH)



Marmalade (FMA)



Moss (FMS)



Pewter (FPW)



Sable (FSB)



Sassy (FSY)

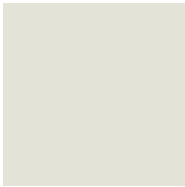
# Surface Materials

## Powder Coat (Indoor & Outdoor)

### Solid Colors



White (MWH)



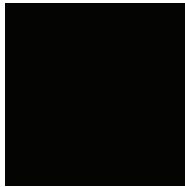
Light Grey (MLG)



Medium Grey (MMG)

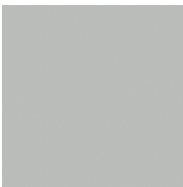


Dark Grey (MDG)



Black (MBK)

### Metallics



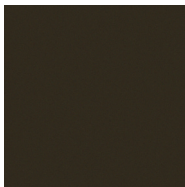
Silver (MSL)



Graphite (MGR)



Champagne (MCH)



Dark Tone (MDT)

### Textures



Stucco (MST)



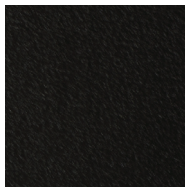
Rubbed Bronze (MRB)



Anthracite (MAN)

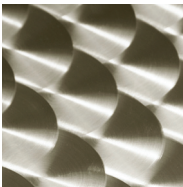


Iron Glimmer (MIG)



Black Wrinkle (MWR)

### Metal (Outdoor)



Scalloped Stainless Steel (MSS). Available on Sam Table Only.



Park Table Mesh Detail Shown (Silver MEM)



Bistro Table Mesh Detail Shown (MEM)



Raw Edge (ULFR)



Flat White T-Molding (ULFV)

# WCI

Due to limitations of the color printing process and natural wood variations, these finish samples should be considered representative only.