



Hydraulic Sloan® Model Flushometer

940-1.6

- ▶ **Description**
Concealed Hydraulically Operated Water Closet Flushometer, for back inlet squat toilet.
- ▶ **Flush Cycle**
 Model 940-1.6 Low Consumption (1.6 gpf/6.0 Lpf)
- ▶ **Specifications**
Quiet, Concealed, Diaphragm Type, Rough Brass Closet Flushometer for either left or right hand supply with the following features:
 - High Chloramine resistant PERMEX® Synthetic Rubber Diaphragm with Linear Filtered Bypass and Vortex Cleansing Action™
 - ADA Compliant Non-Hold-Open feature type Actuator (specify Actuator type listed below)
 - 1" I.P.S. Wheel Handle Bak-Chek® Angle Stop
 - Adjustable Tailpiece
 - Vacuum Breaker Flush Connection for 1½" Back Inlet
 - Sweat Solder Adapter
 - Diaphragm, Stop Seat and Vacuum Breaker to be molded from PERMEX® rubber compound for Chloramine resistance
 - High Copper, Low Zinc Brass Castings for Dezincification Resistance
 - Non-Hold-Open Push Button, Fixed Metering Bypass and No External Volume Adjustment to Ensure Water Conservation.
 - Low Consumption Flush Accuracy
 - Handle Packing, Stop Seat and Vacuum Breaker to be molded from PERMEX® Rubber Compound for Chloramine Resistance.

Valve Body, Cover, Tailpiece and Control Stop shall be in conformance with ASTM Alloy Classification for Semi-Red Brass. Valve shall be in compliance to the applicable sections of ASSE 1037, ANSI/ASME 112.19.2.

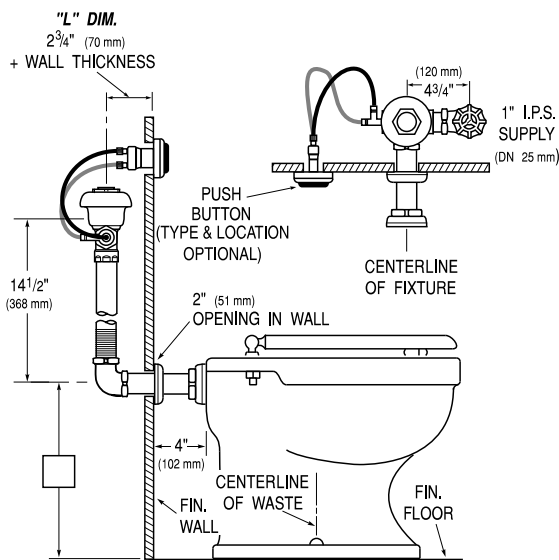
- ▶ **L Dimension**
Specify the "L" Dimension for the proper length of the Flush Connection. The "L" Dimension is equal to the Wall Thickness (to the nearest whole inch) plus 2¾".

- ▶ **Actuator Types:** (please check one)
 - FW** Fixture Wall Actuator (HY-33-A) (rear access required)
 - MP** Metal Partition Actuator (HY-49-A)
 - SW** Side Wall Mounted Actuator (HY-72-A)
 - MBFW** Metal Button Fixture Wall Actuator (HY-100-A) (rear access required)
 - MBPM** Metal Button Panel Mount (HY-108-A)

See Actuator Specification pages in this section for details on Actuators.

- ▶ **Variations**
 - O** Offset Vacuum Breaker Specify: 1" — 1½" — 2"
 - YJ** Split Ring Pipe Support
 - YK** Solid Ring Pipe Support

See Accessories Section of the Sloan catalog for details on these and other Flushometer variations.



This space for Architect/Engineer approval

The information contained in this document is subject to change without notice.

SLOAN®

SLOAN • 10500 SEYMOUR AVE. • FRANKLIN PARK, IL. 60131

Ph: 1-800-9-VALVE-9 or 1-847-671-4300 • Fax: 1-800-447-8329 or 1-847-671-4380

<http://www.sloanvalve.com>